

Picture Archiving And Communication Systems (PACS) FACT SHEET

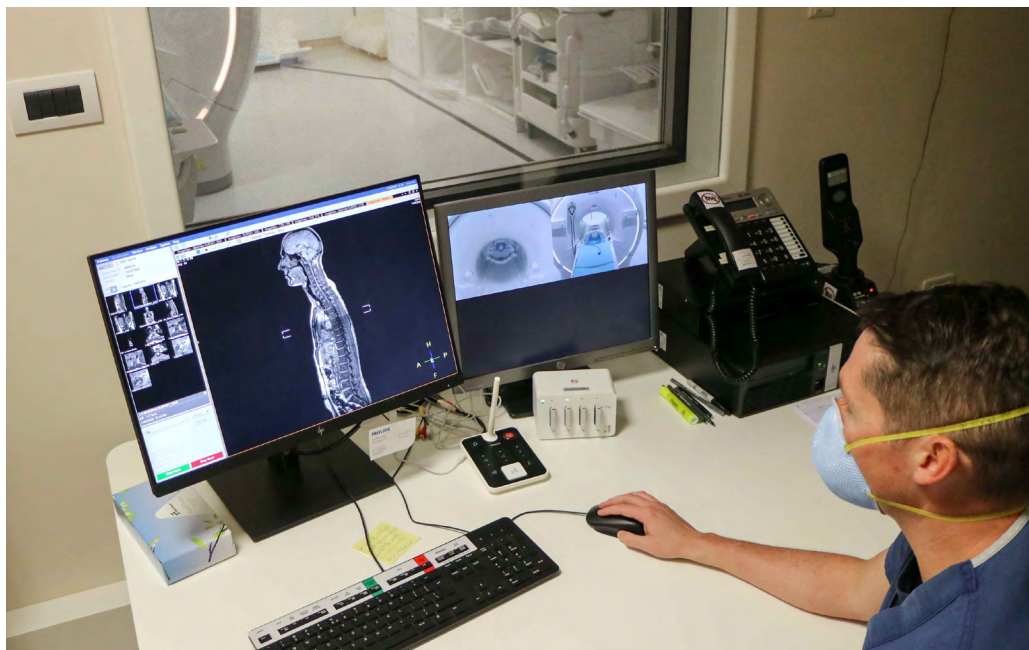
PACS technology allows for digital transmission of electronic images and reduces the need for x-ray film, manual filing, and manual retrieval.

The use of PACS improves beneficiary health care by streamlining platforms and providing medical teams quick, easy access at the point of care.

PACS supports Radiology, Cardiology, Ophthalmology, and other departments that use imaging as a part of their diagnosis. PACS also supports these systems' secondary support tools, workflows, and connections to the electronic health record and the Enterprise Clinical Imaging Archive. The PACS team works with clinical providers to determine their needs in order to provide them the best support.

Background

PACS was initially used to support Diagnostic Imaging (Radiology), but has expanded to support other systems and workflows. The PACS program, now managed by ICS PMO, is comprised of former Army, Air Force, and Navy PACS teams.



Key Features

- Provides training at military hospitals and clinics for installed systems
- Creates integrated network of systems to minimize need for duplicative on-site hardware
- Integrates systems into proper long-term archive and EHR

Key Benefits

- Grants providers access to a greater number of relevant images when providing care
- Streamlines platforms across the enterprise to increase provider familiarity and efficiency
- Facilitates full life cycle management of hardware and software

PACS is managed by the **Solution Delivery Division** Integrated Clinical Systems Program Management Office.