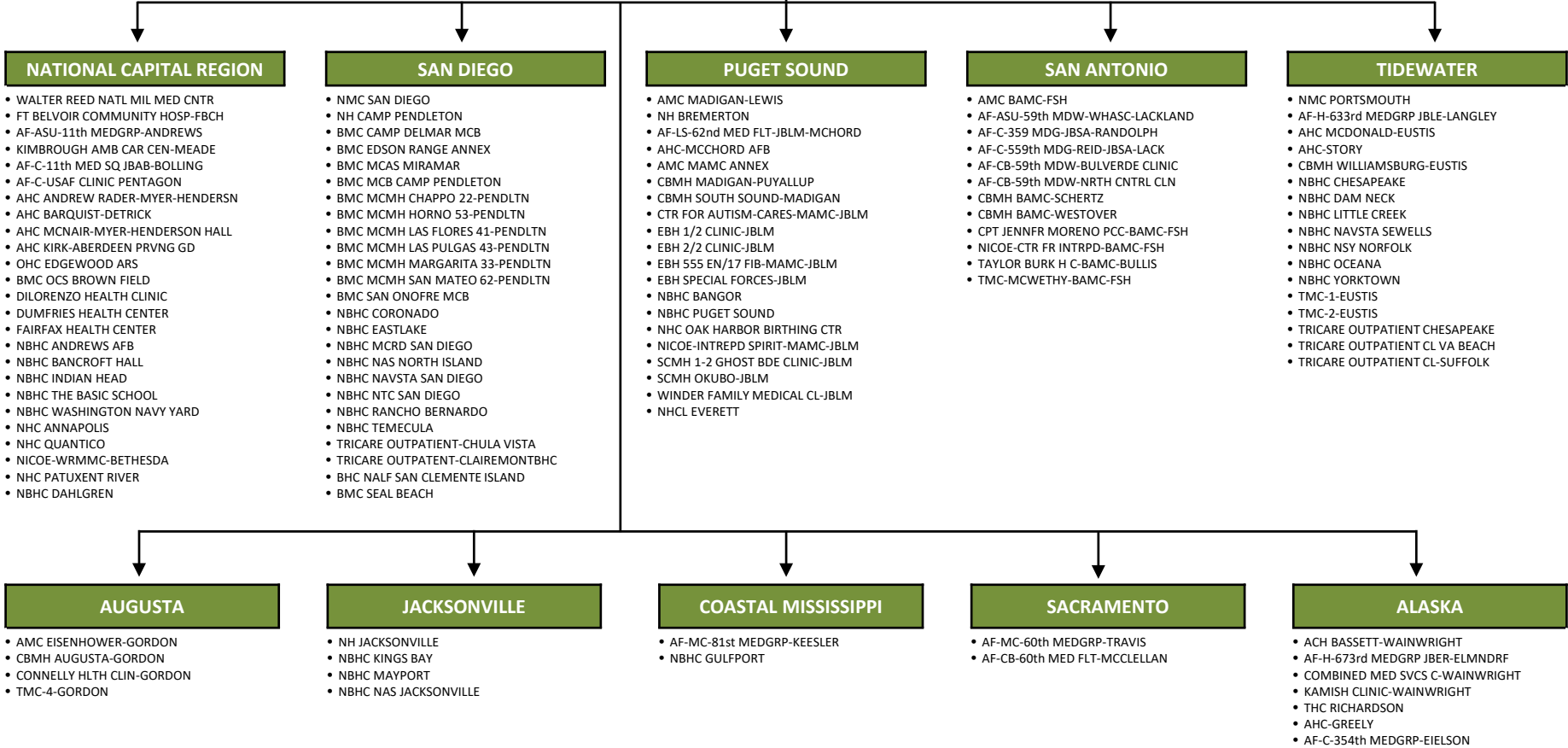




Large Markets

DEFENSE HEALTH AGENCY





Large Markets

DEFENSE HEALTH AGENCY

CENTRAL NORTH CAROLINA

- AMC WOMACK-BRAGG
- AF-C-4th MEDGRP-SJ
- AF-LS-43rd MED SQ-JBBP-POPE
- BRAGG CLINIC
- CBMH FAYETTEVILLE-BRAGG
- CBMH HOPE MILLS-BRAGG
- CBMH LINDEN OAKS-BRAGG
- CLARK CLINIC-BRAGG
- EBH EAST BRAGG CLINIC-BRAGG
- EBH SMOKE BOMB HILL-BRAGG
- EBH WEST BRAGG CLINIC-BRAGG
- JOEL CLINIC-BRAGG
- NICOE-INTREPID SPIRIT-BRAGG
- ROBINSON CLINIC-BRAGG
- TROOP & FAMILY MED CL-BRAGG
- WAMC-VA FAY REHAB CLINIC-BRAGG

COLORADO

- ACH EVANS-CARSON
- AF-ASU-10th MEDGRP-ACADEMY
- AF-C-21st MEDGRP-PETERSON
- AF-C-SCHRIEVER MED SQ-PETERSON
- AF-C-460th MEDGRP-BUCKLEY
- CBMH MTN POST-CARSON
- CBMH PREMIER-CARSON
- EBH BLDG 1226-CARSON
- EBH BLDG 1657-CARSON
- EBH BLDG 2361-CARSON
- EBH BLDG 2649-CARSON
- EBH BLDG 9481-CARSON
- MOUNTAIN POST BEHAVIORAL HC
- TMC DIRAIMONDO-CARSON
- TMC ROBINSON-CARSON

SOUTHWESTERN KENTUCKY

- ACH BLANCHFIELD-CAMPBELL
- ARMY INTREPID SPIRIT-CAMPBELL
- AVIATION MEDICINE C-CAMPBELL
- BYRD HEALTH CLINIC-CAMPBELL
- CBMH SCREAMING EAGLE-CAMPBELL
- EBH 5th GROUP-CAMPBELL
- EBH SUSTAINMENT-CAMPBELL
- EBH1-CAMPBELL
- EBH2-CAMPBELL
- EBH3-CAMPBELL
- EBH-AVIATION-CAMPBELL
- LA POINTE HLTH CLINIC-CAMPBELL
- PHIOP-CAMPBELL

SOUTHWEST GEORGIA

- ACH MARTIN-BENNING
- CBMH NORTH COLUMBUS-BENNING
- CTMC 2-HARMONY CHURCH-BENNING
- CTMC SLEDGEHAMMER-BENNING
- CTMC-BENNING
- EBH-BENNING
- FPC WINDER-BENNING
- SULLIVAN MEMORIAL BDC-BENNING
- TMC 6-DAHLONEGA-BENNING
- TMC-5-BENNING
- TMC-RECEPTION STA-BENNING
- NBHC ALBANY

CENTRAL TEXAS

- AMC DARNALL-HOOD
- BENNETT FAM CARE CLINIC-HOOD
- BLDG 36000-HOOD
- CBMH COPPERAS COVE-HOOD
- CBMH HARKER HEIGHTS-HOOD
- CBMH KILLEEN-HOOD
- CBMH WEST KILLEEN-HOOD
- CHARLES MOORE HLTH CLIN-HOOD
- EBH 5/6 EBHT BLDG 2255-HOOD
- EBH 8 EBHT-HOOD
- EBH TEAM A 1-1CD-HOOD
- EBH TEAM B 2-1CD-HOOD
- EBH TEAM C 3-1CD-HOOD
- EBH TEAM D 3CR-HOOD
- MONROE CONSOLIDATED-HOOD
- NICOE-INTREPID SPIRIT-HOOD
- RUSSELL COLLIER HLTH CLIN-HOOD
- TMC-12-HOOD
- TMC-14-HOOD

EL PASO

- AMC WILLIAM BEAUMONT-BLISS
- CBMH WEST EL PASO-BLISS
- CBMH RIO BRAVO-BLISS
- EAST BLISS CLINIC-BLISS
- MENDOZA SOLDIER FAM CC-BLISS
- SR LDR SUSTNMNT USASMA-BLISS
- TMC MCGREGOR RANGE
- TMC MEDICAL EXAM STATION-BLISS
- AHC MCAFEE-WHITE SANDS MSL RAN
- AF-C-49th MEDGRP-HOLLOMAN

FLORIDA PANHANDLE

- AF-H-96th MEDGRP-EGLIN
- NH PENSACOLA
- AF-C-1st SPCL OPS MED-HURLBURT
- AF-C-325th MEDGRP-TYNDALL
- NBHC MILTON WHITING FIELD
- NBHC NAS PENSACOLA
- NBHC NATTC PENSACOLA
- NBHC NTTC PENSACOLA
- TMC 9-7TH SPECIAL FORCES-EGLIN
- TMC EGLIN AFB
- NBHC NAVCOASTSYS PANAMA CITY

NORTH CAROLINA COAST

- NMC CAMP LEJEUNE
- BMC BLDG 15 MCB CAMP LEJEUNE
- BMC CAMP GEIGER MCB
- BMC CAMP JOHNSON MCB
- BMC CORFAC MCB CAMP LEJEUNE
- BMC MCMH COURTHOUSE BAY-LEJEUNE
- BMC MCMH FRENCH CREEK-LEJEUNE
- BMC MCMH MAIN SIDE-LEJEUNE
- BMC MCMH NEW RIVER-LEJEUNE
- NHC CHERRY POINT

LOW COUNTRY

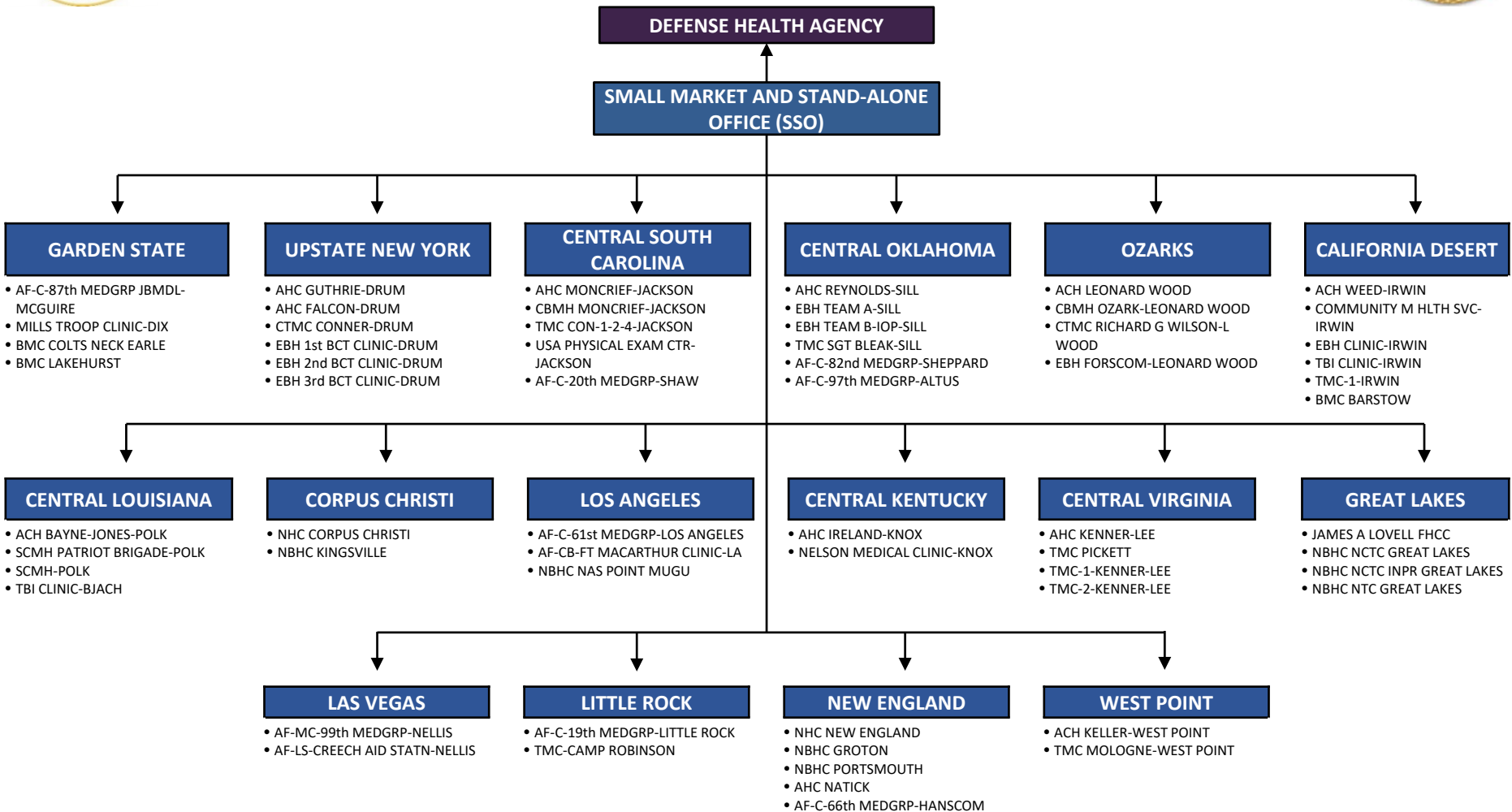
- ACH WINN-STEWART
- NH BEAUFORT
- AF-C-628th MEDGRP-CHARLESTON
- AHC TUTTLE-HUNTER ARMY AIRFLD
- CBMH RICHMOND HILL-STEWART
- EBH TEAM A-STEWART
- EBH TEAM B-STEWART
- NBHC MCAS BEAUFORT
- NBHC MCRD PARRIS ISLAND
- NHC CHARLESTON
- TMC LLOYD C HAWKS-STEWART
- TMC-STEWART

KANSAS

- ACH IRWIN-RILEY
- AMH FARRELLY AHC-RILEY
- AVIATION CLINIC-RILEY
- CBMH FLINT HILLS-RILEY
- CUSTER HILL HC-RILEY
- TBI CLINIC-RILEY
- AHC MUNSON-LEAVENWORTH
- TMC #1-USDB-LEAVENWORTH
- TMC #2-USDB 2-LEAVENWORTH
- AF-C-22nd MEDGRP-MCCONNELL

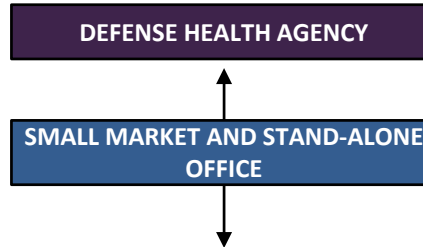


SSO – Small Markets





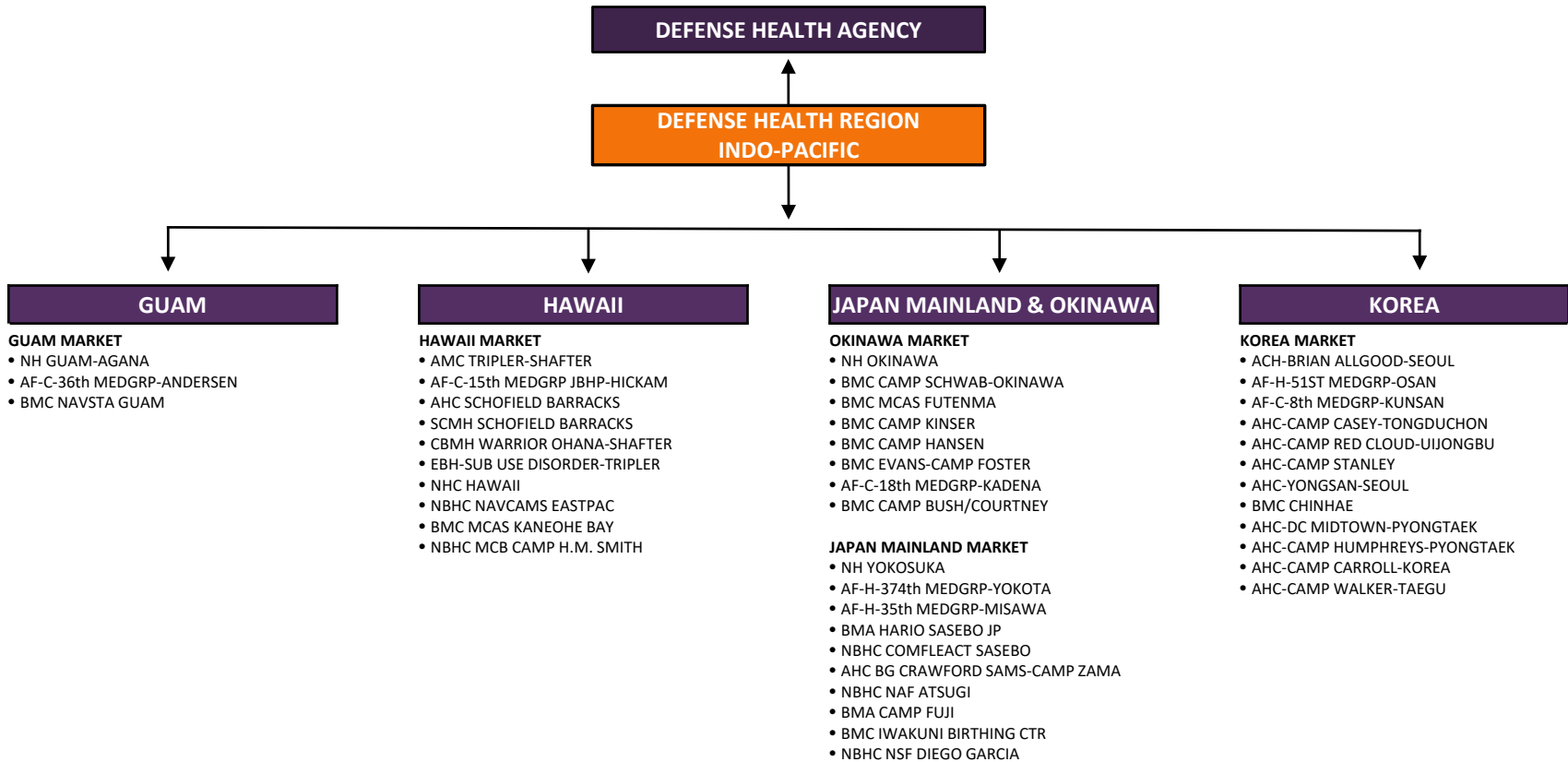
SSO – Stand Alone MTFs



- | | | |
|--|---|---|
| <ul style="list-style-type: none"> • AF-C-28th MEDGRP-ELLSWORTH • AF-C-319th MEDGRP-GRAND FORKS • AF-C-509th MEDGRP-WHITEMAN • AF-C-55th MEDGRP-OFFUTT • AF-C-5th MEDGRP-MINOT • AF-C-45th MEDGRP-PATRICK • AF-C-30th MEDGRP-VANDENBERG • AF-C-27th SPCLOPS MDGRP-CANNON • AF-C-355th MEDGRP-DM • AF-C-377th MEDGRP-KIRTLAND • AF-MC-88th MEDGRP-WRIGHT-PAT • AF-C-412th MEDGRP-EDWARDS • AF-C-2nd MEDGRP-BARKSDALE • AF-C-375th MEDGRP-SCOTT • AF-C-341st MEDGRP-MALMSTROM • AF-C-366th MEDGRP-MT HOME • AF-C-75th MEDGRP-HILL • AF-C-90th MEDGRP-FE WARREN • AF-C-92nd MEDGRP-FAIRCHILD • AF-C-23rd MEDGRP-MOODY & AF-EC-93rd AGOW-MOODY • AF-C-14th MEDGRP-COLUMBUS • AF-C-9th MEDGRP-BEALE | <ul style="list-style-type: none"> • AF-C-6th MEDGRP-MACDILL & AF-CB-BRANDON COMM CLINIC-MIL • AF-C-56th MEDGRP-LUKE • AF-LS-ARNOLD ENG DEV COMPLEX • AF-C-436th MEDGRP-DOVER • AF-C-42nd MEDGRP-MAXWELL • AF-C-78th MEDGRP-ROBINS • AF-C-72nd MEDGRP-TINKER & AF-EC-552nd OPS GRP CLN-TINKER • AF-C-71st MEDGRP-VANCE • AF-C-7th MEDGRP-DYESS • AF-C-17th MEDGRP-GOODFELLOW • AF-C-47th MEDGRP-LAUGHLIN • NBHC EL CENTRO • NBHC MERIDIAN • NBHC KEY WEST • NBHC NSA MID-SOUTH • NHC LEMOORE • NBHC FALLON • NBHC WPNMCRANE • BMC MECHANICSBURG • NBMC NAVAL BUSINESS CENTER • NBHC FORT WORTH | <ul style="list-style-type: none"> • NBHC PORT HUENEME • NBHC SARATOGA SPRINGS • NH GUANTANAMO BAY • NH TWENTYNINE PALMS • BMC BRIDGEPORT • NBHC NAS BELLE CHASE • NBHC NAVWPNCEN CHINA LAKE • BMC YUMA • AHC YUMA PROVING GROUND • AHC MONTEREY • AHC-VA MG GOURLEY CL-MONTEREY • SOUTHCOM CLINIC-GORDON • AHC R W BLISS-HUACHUCA • CAMP SHELBY • AHC RODRIGUEZ-BUCHANAN • AHC ROCK ISLAND ARSENAL • AHC FOX-REDSTONE ARSENAL • AHC INDIANTOWN GAP • AHC DUNHAM-CARLISLE BARRACKS • AHC FILLMORE-NEW CUMBERLAND • AHC LETTERKENNY ARMY DEPOT • AHC LYSTER-RUCKER • RED RIVER ARMY DEPOT |
|--|---|---|



Defense Health Region Indo-Pacific





Defense Health Region Europe

