

Deployment Health Assessments

U.S. Armed Forces

February 2017

(Data through January 2017)

Armed Forces Health Surveillance Branch

Update: Deployment Health Assessments, U.S. Armed Forces, February 2017

Since January 2003, pronounced fluctuations in the monthly numbers of pre- and post-deployment health assessment (PDHA) forms transmitted to the Armed Forces Health Surveillance Branch generally have corresponded to times of departure and return of large numbers of service members who deployed. Between April 2006 and January 2017, the number of post-deployment health reassessment (PDHRA) forms per month ranged from 5,661 to 36,863 (Figure 1). During the past 12 months (February 2016–January 2017), numbers of post-deployment health assessment and reassessment forms per month have been relatively stable (Figure 1, Table 1). The rolling 1-year averages for monthly numbers of post-deployment health reassessments for the most recent 12-month period were the 12 lowest averages since July 2006 (data not shown). For the purposes of this report about service members' responses to the assessment questions, it is important to note that the denominator is the total number of service members who completed deployment-related assessments, not the total number of service members eligible for the assessments.

During the past 12 months, the percentages of total returned deployers who rated their health as either "fair" or "poor" ranged from 6.0% to 8.3% on PDHA questionnaires and from 6.5% to 8.9% on PDHRA questionnaires (Figure 2). The percentages of total service members who rated their health as either "fair" or "poor" on pre-deployment questionnaires during this period varied between 3.3% and 4.3%.

In general, the percentages of "health concerns" and "exposure concerns" self-reported on PDHA and PDHRA forms were higher among reserve component members than among active component members (Table 2, Figure 3). Unlike their counterparts in the other services, service members in the active component of the Marine Corps were twice as likely to report exposure concerns 3–6 months after deployment, compared to the time of their return from deployment (Table 2).

At the time of return from deployment, 16.5% of active component and 15.2% of reserve component service members reported any depression symptoms. Service members in the active and reserve components were about five and 13 times as likely, respectively, to receive a mental health referral at the time of the PDHRA, compared to the time of return from deployment. Moreover, at the time of the PDHRA (3–6 months after return), reservists were more than twice as likely to receive a mental health referral as members of the active component (Table 2).

Figure 1. Numbers of deployment health assessment and reassessment forms, by month, U.S. Armed Forces, January 2003–January 2017

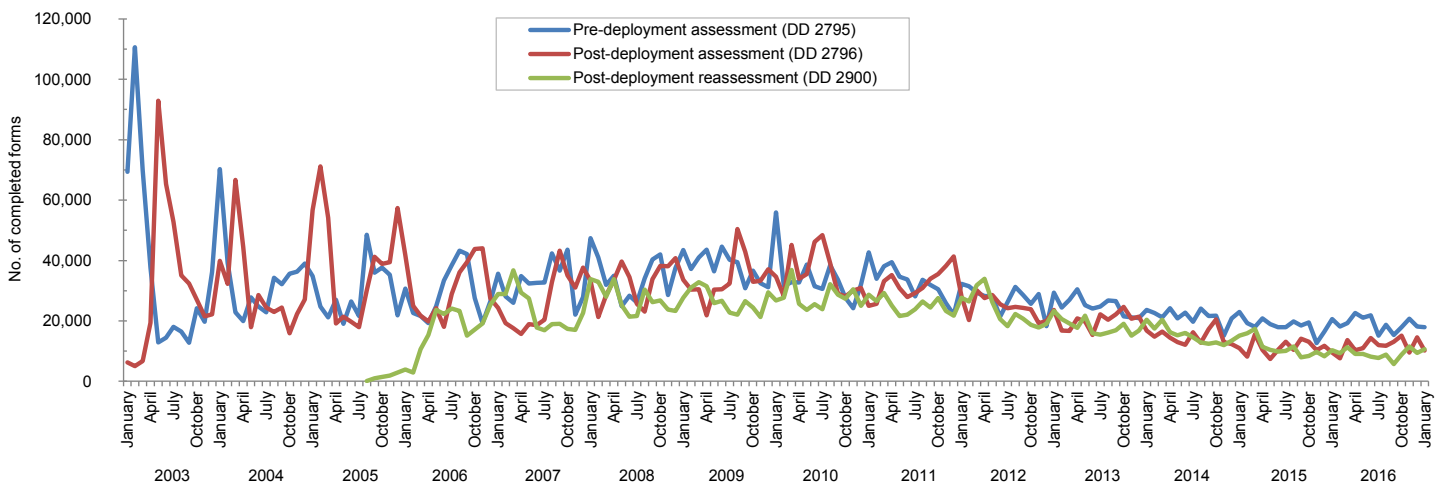


Table 1. Number of deployment-related health assessment forms, by month, U.S. Armed Forces, February 2016–January 2017

| | Pre-deployment assessment DD 2795 | | Post-deployment assessment DD 2796 | | Post-deployment reassessment DD 2900 | |
|----------------|--------------------------------------|-------|---------------------------------------|-------|---|-------|
| | No. | % | No. | % | No. | % |
| Total | 227,175 | 100.0 | 143,282 | 100.0 | 109,694 | 100.0 |
| Average | 18,931 | . | 11,940 | . | 9,141 | . |
| 2016 | | | | | | |
| February | 18,159 | 8.0 | 7,624 | 5.3 | 9,324 | 8.5 |
| March | 19,326 | 8.5 | 13,713 | 9.6 | 11,317 | 10.3 |
| April | 22,674 | 10.0 | 10,361 | 7.2 | 9,050 | 8.3 |
| May | 21,107 | 9.3 | 10,975 | 7.7 | 9,109 | 8.3 |
| June | 21,907 | 9.6 | 14,382 | 10.0 | 8,228 | 7.5 |
| July | 15,079 | 6.6 | 11,987 | 8.4 | 7,736 | 7.1 |
| August | 18,750 | 8.3 | 11,753 | 8.2 | 8,834 | 8.1 |
| September | 15,328 | 6.7 | 13,154 | 9.2 | 5,661 | 5.2 |
| October | 17,958 | 7.9 | 15,130 | 10.6 | 8,867 | 8.1 |
| November | 20,763 | 9.1 | 9,487 | 6.6 | 11,558 | 10.5 |
| December | 18,173 | 8.0 | 14,529 | 10.1 | 9,386 | 8.6 |
| 2017 | | | | | | |
| January | 17,951 | 7.9 | 10,187 | 7.1 | 10,624 | 9.7 |

Source: Defense Medical Surveillance System (DMSS) as of 07-FEB-2017
Prepared by Armed Forces Health Surveillance Branch (AFHSB)

Figure 2. Percentages of deployment health assessment forms with self-assessed health status rated as "fair" or "poor," by month, U.S. Armed Forces, February 2016–January 2017

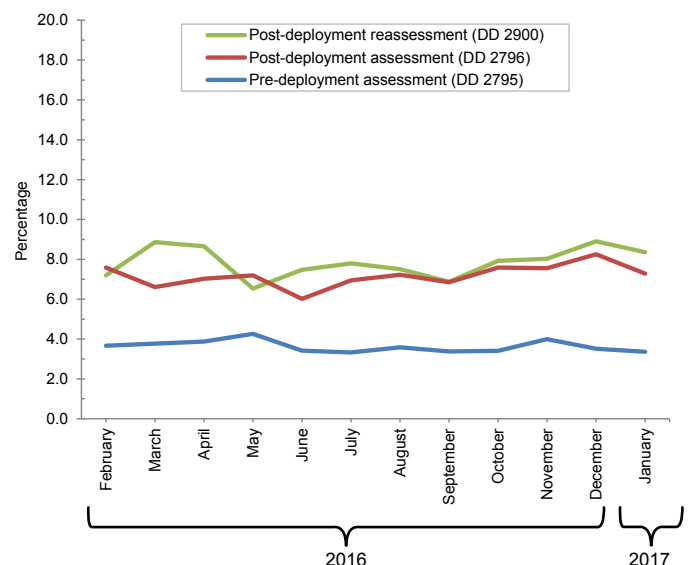


Table 2. Percentage of service members who endorsed selected questions or received referrals on health assessment forms, U.S. Armed Forces, February 2016–January 2017

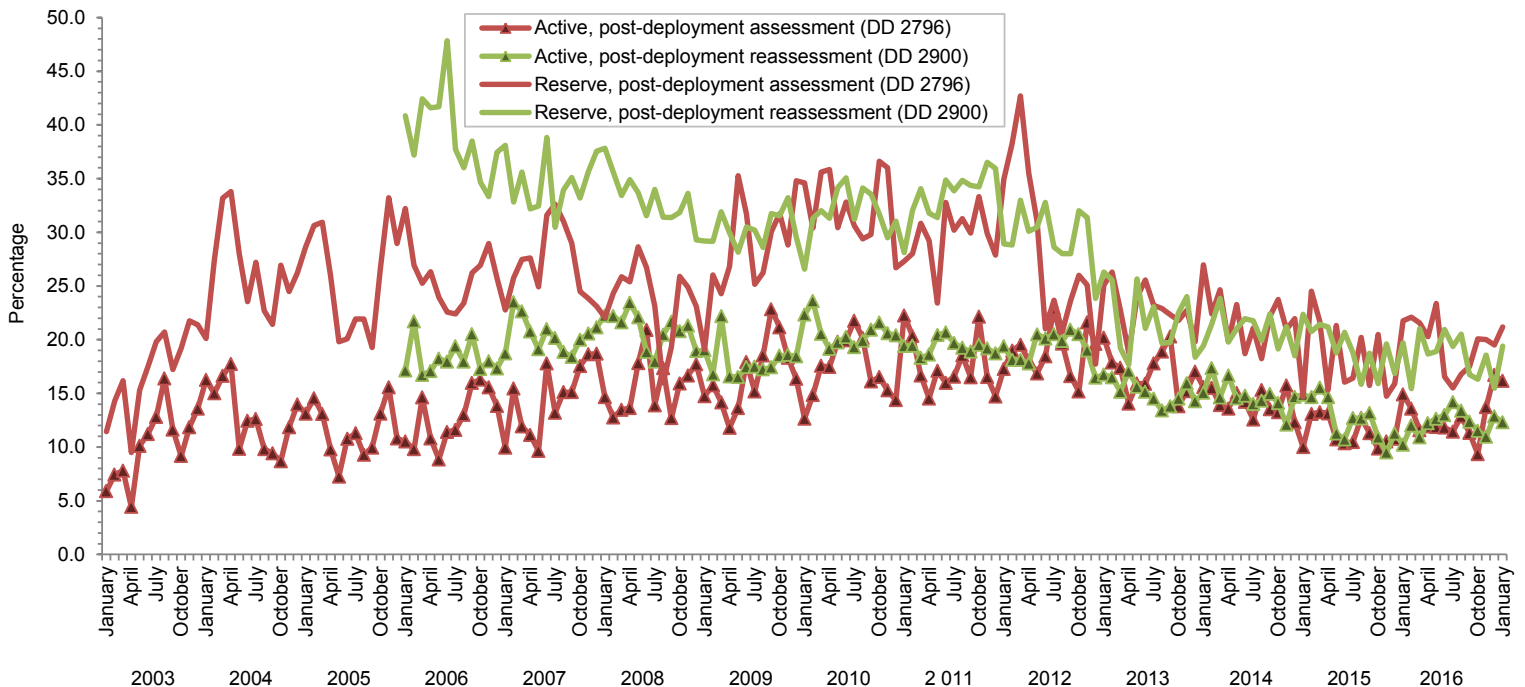
| | Army | | | Navy | | | Air Force | | | Marine Corps | | | All active component service members | | |
|---|-------------------|--------------------|-------------------|-------------------|--------------------|-------------------|-------------------|--------------------|-------------------|-------------------|--------------------|-------------------|---------------------------------------|--------------------|-------------------|
| | Pre-deploy DD2795 | Post-deploy DD2796 | Reassessmt DD2900 | Pre-deploy DD2795 | Post-deploy DD2796 | Reassessmt DD2900 | Pre-deploy DD2795 | Post-deploy DD2796 | Reassessmt DD2900 | Pre-deploy DD2795 | Post-deploy DD2796 | Reassessmt DD2900 | Pre-deploy DD2795 | Post-deploy DD2796 | Reassessmt DD2900 |
| Active component | n= 92,234 % | n= 49,612 % | n= 34,911 % | n= 6,228 % | n= 6,569 % | n= 6,042 % | n= 36,284 % | n= 33,062 % | n= 30,608 % | n= 18,811 % | n= 12,918 % | n= 10,474 % | n= 153,557 % | n= 102,161 % | n= 82,035 % |
| General health "fair" or "poor" | 5.5 | 9.6 | 11.6 | 1.6 | 5.8 | 5.5 | 1.2 | 3.1 | 3.2 | 2.8 | 5.1 | 7.7 | 4.0 | 6.7 | 7.5 |
| Health concerns, not wound or injury | 6.6 | 19.6 | 15.9 | 3.4 | 11.8 | 7.2 | 3.2 | 8.4 | 7.2 | 3.3 | 8.5 | 7.8 | 5.3 | 14.1 | 11.0 |
| Health worse now than before deployed | na | 72.5 | 77.1 | na | 70.1 | 75.5 | na | 61.7 | 71.3 | na | 68.7 | 78.0 | na | 68.4 | 74.9 |
| Exposure concerns | na | 12.8 | 13.2 | na | 14.4 | 16.0 | na | 13.0 | 8.8 | na | 8.1 | 17.2 | na | 12.4 | 12.3 |
| PTSD symptoms (two or more) | na | 6.1 | 8.0 | na | 4.5 | 5.2 | na | 2.2 | 2.9 | na | 2.6 | 5.9 | na | 4.3 | 5.6 |
| Depression symptoms (any) | na | 21.7 | 22.5 | na | 17.6 | 16.0 | na | 8.8 | 8.9 | na | 15.3 | 18.0 | na | 16.5 | 16.4 |
| Referral indicated by provider (any) | 6.4 | 17.0 | 14.9 | 7.6 | 23.0 | 14.1 | 6.0 | 14.4 | 12.7 | 4.5 | 17.5 | 14.5 | 6.1 | 16.6 | 13.9 |
| Mental health referral indicated ^a | 1.8 | 2.9 | 12.4 | 0.9 | 3.8 | 11.3 | 0.8 | 1.8 | 10.7 | 0.6 | 2.0 | 12.0 | 1.4 | 2.5 | 11.7 |
| Medical visit following referral ^b | 99.1 | 99.8 | 98.5 | 85.9 | 89.9 | 89.6 | 99.7 | 99.3 | 99.7 | 87.4 | 89.9 | 91.3 | 97.5 | 97.4 | 97.3 |
| | Army | | | Navy | | | Air Force | | | Marine Corps | | | All reserve component service members | | |
| | Pre-deploy DD2795 | Post-deploy DD2796 | Reassessmt DD2900 | Pre-deploy DD2795 | Post-deploy DD2796 | Reassessmt DD2900 | Pre-deploy DD2795 | Post-deploy DD2796 | Reassessmt DD2900 | Pre-deploy DD2795 | Post-deploy DD2796 | Reassessmt DD2900 | Pre-deploy DD2795 | Post-deploy DD2796 | Reassessmt DD2900 |
| Reserve component | n= 25,061 % | n= 17,752 % | n= 14,118 % | n= 2,346 % | n= 1,929 % | n= 2,113 % | n= 13,503 % | n= 12,400 % | n= 9,787 % | n= 688 % | n= 518 % | n= 508 % | n= 41,598 % | n= 32,599 % | n= 26,526 % |
| General health "fair" or "poor" | 1.4 | 10.5 | 12.0 | 0.4 | 8.8 | 7.8 | 1.0 | 4.6 | 4.6 | 0.6 | 8.5 | 7.1 | 1.2 | 8.1 | 8.8 |
| Health concerns, not wound or injury | 2.7 | 24.8 | 18.4 | 1.4 | 33.0 | 11.9 | 1.7 | 9.7 | 5.7 | 2.3 | 22.0 | 6.5 | 2.3 | 19.5 | 13.0 |
| Health worse now than before deployed | na | 71.6 | 77.1 | na | 73.5 | 76.6 | na | 65.0 | 72.0 | na | 78.8 | 78.1 | na | 69.3 | 75.2 |
| Exposure concerns | na | 19.4 | 21.0 | na | 37.2 | 34.3 | na | 15.8 | 10.9 | na | 29.0 | 23.4 | na | 19.2 | 18.4 |
| PTSD symptoms (two or more) | na | 7.2 | 10.5 | na | 5.4 | 9.1 | na | 1.8 | 2.4 | na | 6.8 | 12.8 | na | 5.0 | 7.4 |
| Depression symptoms (any) | na | 19.4 | 20.5 | na | 15.6 | 20.6 | na | 8.9 | 7.3 | na | 18.3 | 21.7 | na | 15.2 | 15.7 |
| Referral indicated by provider (any) | 3.3 | 22.7 | 40.4 | 6.6 | 39.0 | 35.9 | 3.2 | 18.2 | 20.8 | 5.5 | 34.4 | 27.0 | 3.5 | 22.1 | 32.6 |
| Mental health referral indicated ^a | 0.8 | 2.8 | 39.9 | 0.3 | 2.7 | 35.6 | 0.4 | 1.7 | 20.5 | 1.9 | 1.7 | 26.0 | 0.6 | 2.4 | 32.1 |
| Medical visit following referral ^b | 81.0 | 99.0 | 46.4 | 99.0 | 99.4 | 64.3 | 69.4 | 78.4 | 60.7 | 73.7 | 76.9 | 44.9 | 79.9 | 92.2 | 51.2 |

PTSD, post-traumatic stress disorder

^aIncludes behavioral health, combat stress and substance abuse referrals.

^bRecord of inpatient or outpatient visit within 6 months after referral.

Figure 3. Percentages of service members with completed assessments who endorsed exposure concerns on post-deployment health assessments or reassessments, by component, by month, U.S. Armed Forces, January 2003–January 2017



Data Source: Defense Medical Surveillance System