



DEPARTMENT OF DEFENSE (AFHSB) Seasonal Influenza Surveillance Summary

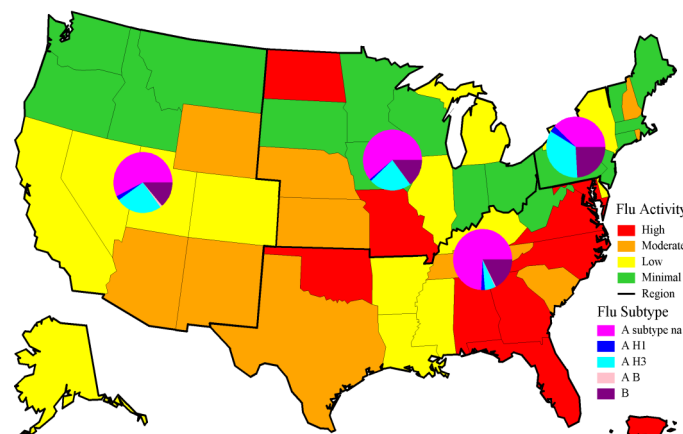


Northern Command—Week 06 (04 Feb 2018-10 Feb 2018)

In NORTHCOM during week 06

- ◆ Influenza activity continued to decrease in several states, but remained moderate to high in many states, especially in the South.
- ◆ The percentage of outpatient visits due to ILI decreased, but remained above baseline and previous seasons.
- ◆ The percentage of positive lab tests remained high, but continued to decrease to 16.3% for service members and 30.2% for other beneficiaries for week 06.
- ◆ Among influenza A specimens that were subtyped, the majority continued to be A/H3N2. The proportion of specimens that are Influenza B has remained high over the past few weeks.
- ◆ Fourteen other beneficiary (OB) influenza hospitalizations (RMEs) were reported for week 06. (Season totals: 37 Service member and 171 OB)

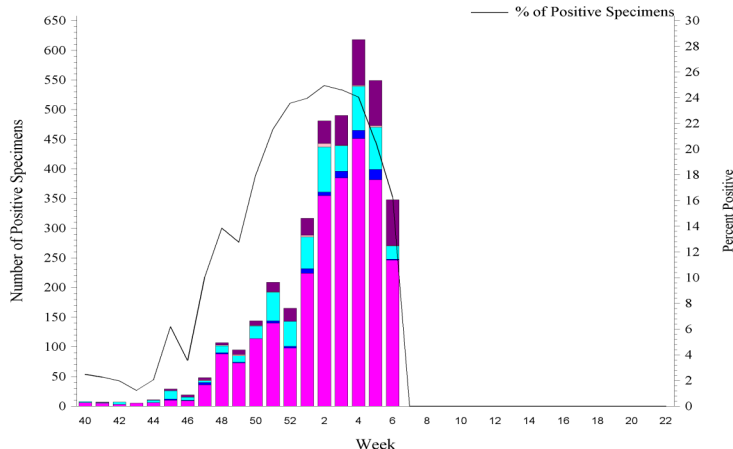
NORTHCOM Service Members, Influenza Activity and Virus Subtype, During the Last 2 Weeks



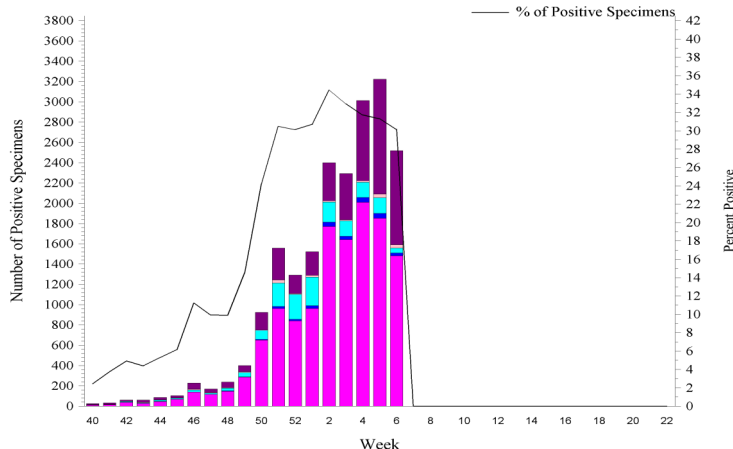
2017 – 2018 NORTHCOM Season Totals

| | A/H1N1 | A/H3N2 | A/Untyped | Flu B | AB | Overall % Positive |
|-----------------|--------|--------|-----------|-------|-----|--------------------|
| Service Members | 75 | 506 | 2636 | 418 | 22 | 18.28 |
| Dependents | 281 | 1682 | 13069 | 4903 | 210 | 26.2 |

NORTHCOM Service Members, Influenza Positive Specimens Reported to AFHSB

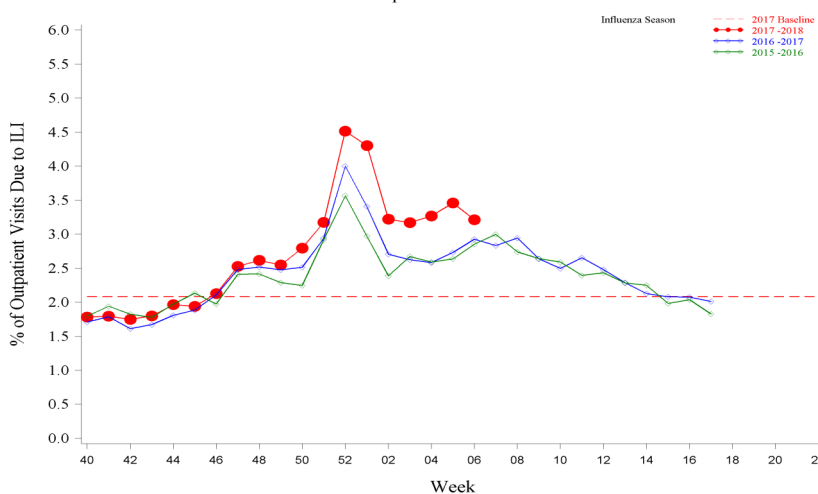


NORTHCOM Beneficiaries, Influenza Positive Specimens Reported to AFHSB



Disclaimer: Medical data from Military Treatment Facilities that are using MHS GENESIS are not available in DMSS. This includes Naval Hospital Oak Harbor, Naval Hospital Bremerton, Air Force Medical Services Fairchild, and Madigan Army Medical Center. Therefore, individuals who are expected to seek care at one of these facilities are currently being removed from the study population as we will not capture their medical encounters.

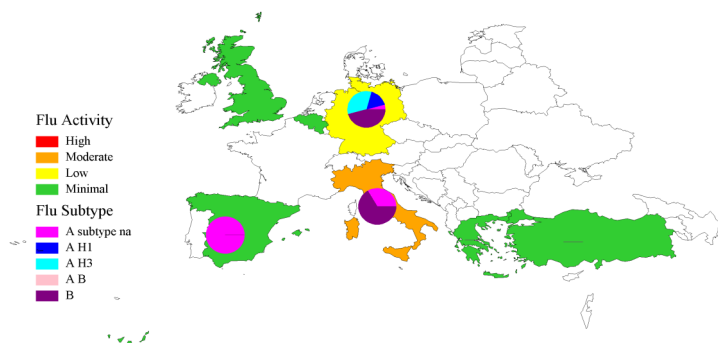
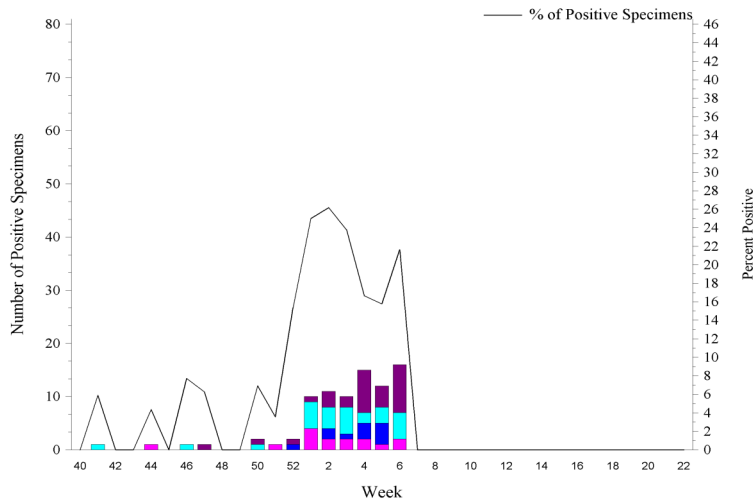
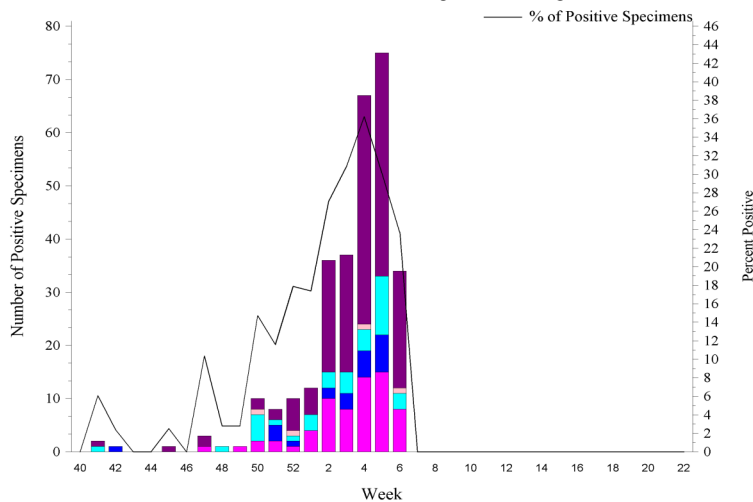
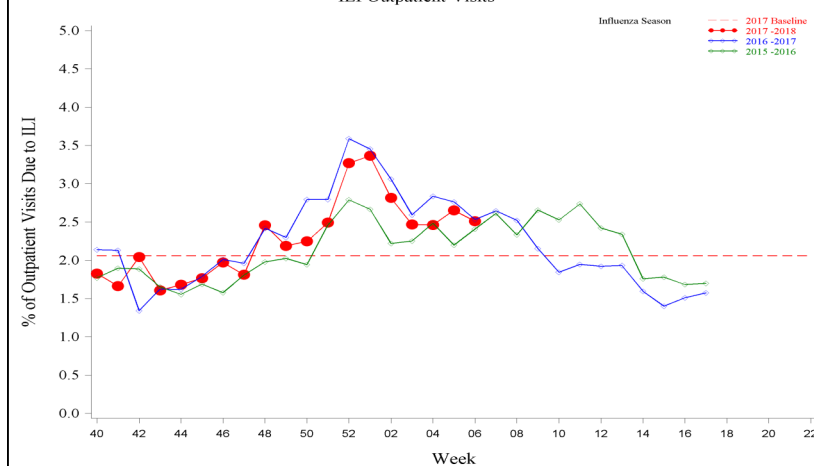
NORTHCOM Service Members, 2017-2018 and Previous 2 Influenza Seasons
ILI Outpatient Visits



For inquiries or comments please contact dha.ncr.health-surv.mbx.afhs-commcenter@mail.mil

**European Command -- Week 06****In EUCOM during week 06**

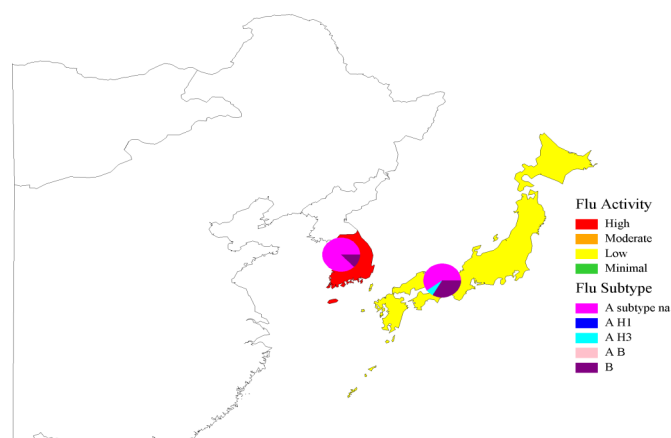
- ◆ Influenza activity decreased to minimal in the United Kingdom and Spain, but remained similar to last week for other EUCOM countries. Italy continued to have moderate activity.
- ◆ The percentage of outpatient visits due to ILI decreased and was similar to previous seasons, but above baseline.
- ◆ The percentage of positive lab tests increased to 21.6% for service members and remained stable at 23.8% for other beneficiaries for week 06.
- ◆ Influenza B positive specimens have predominated this season for EUCOM.
- ◆ Two influenza hospitalizations (RMEs) among an other beneficiary was reported in EUCOM during week 06.

EUCOM Service Members, Influenza Activity and Virus Subtype, During the Last 2 Weeks**EUCOM Service Members, Influenza Positive Specimens Reported to AFHSB****EUCOM Beneficiaries, Influenza Positive Specimens Reported to AFHSB****EUCOM Service Members, 2017-2018 and Previous 2 Influenza Seasons****2017-2018 EUCOM Season Totals**

| | A/H1N1 | A/H3N2 | A/Untyped | Influenza B | AB | Overall % Positive |
|-----------------|--------|--------|-----------|-------------|----|--------------------|
| Service Members | 11 | 27 | 15 | 30 | 0 | 13.56 |
| Dependents | 22 | 37 | 66 | 169 | 4 | 20.97 |

**Pacific Command -- Week 06****In PACOM during week 06**

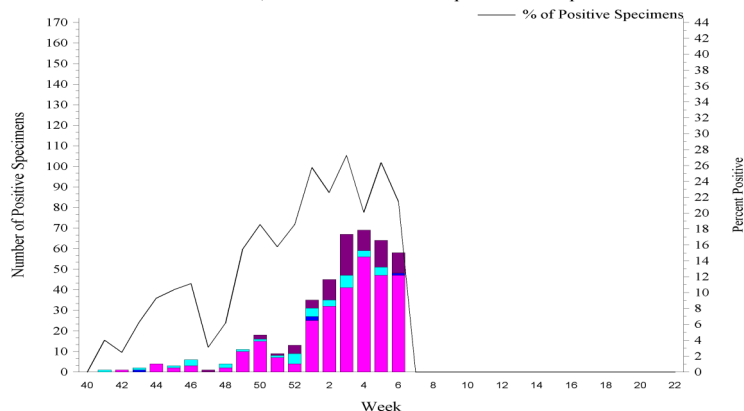
- ◆ Influenza activity in PACOM continued to vary by country, but remained high in the Republic of Korea during week 06.
- ◆ The percentage of outpatient visits due to ILI decreased to be similar to previous seasons, but remained above baseline.
- ◆ The percentage of positive lab tests decreased to 21.5% for service members and 21.1% for other beneficiaries during week 06.
- ◆ Among influenza A specimens that were subtyped, the majority continued to be A/H3N2. The proportion of specimens that are Influenza B has remained high over the past few weeks.
- ◆ No influenza hospitalizations (RMEs) were report in PACOM during week 06.

PACOM Service Members, Influenza Activity and Virus Subtype, During the Last 2 Weeks
South Korea and Japan**PACOM: Guam and Hawaii Influenza Activity and HL7 Test Positive (MAP: SM+BN, 2 wks)**

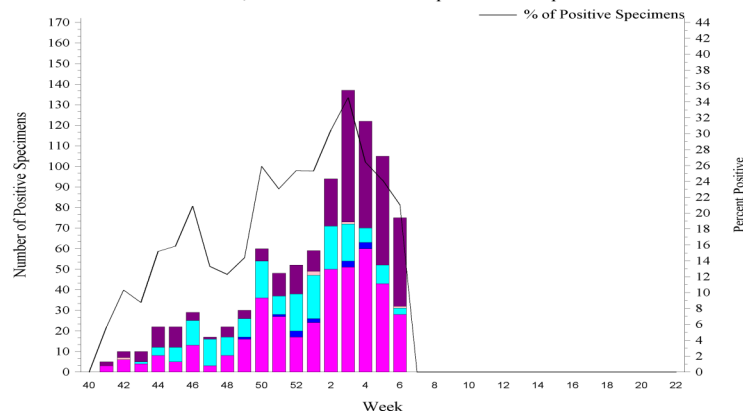
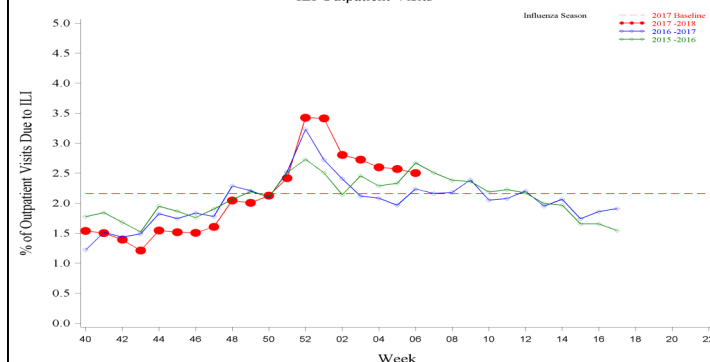
| Area Name | Influenza Activity | HL7 Type | | | | |
|----------------|--------------------|----------|-------|-----------|----|----|
| | | A(H1) | A(H3) | A Untyped | B | AB |
| Guam | Minimal | 0 | 0 | 4 | 2 | 1 |
| Hawaii* | Low | 1 | 14 | 28 | 40 | 0 |

*Hawaii HL7 Type counts may include samples received from Guam, but tested in Hawaii

PACOM Service Members, Influenza Positive Specimens Reported to AFHSB



PACOM Beneficiaries, Influenza Positive Specimens Reported to AFHSB

**PACOM Service Members, 2017-2018 and Previous 2 Influenza Seasons**
ILI Outpatient Visits**2017-2018 PACOM Season Totals**

| | A/H1N1 | A/H3N2 | A/Untyped | Flu B | Flu AB | Overall % Positive |
|-----------------|--------|--------|-----------|-------|--------|--------------------|
| Service Members | 4 | 36 | 296 | 75 | 0 | 19.73 |
| Dependents | 13 | 179 | 402 | 320 | 5 | 22.13 |

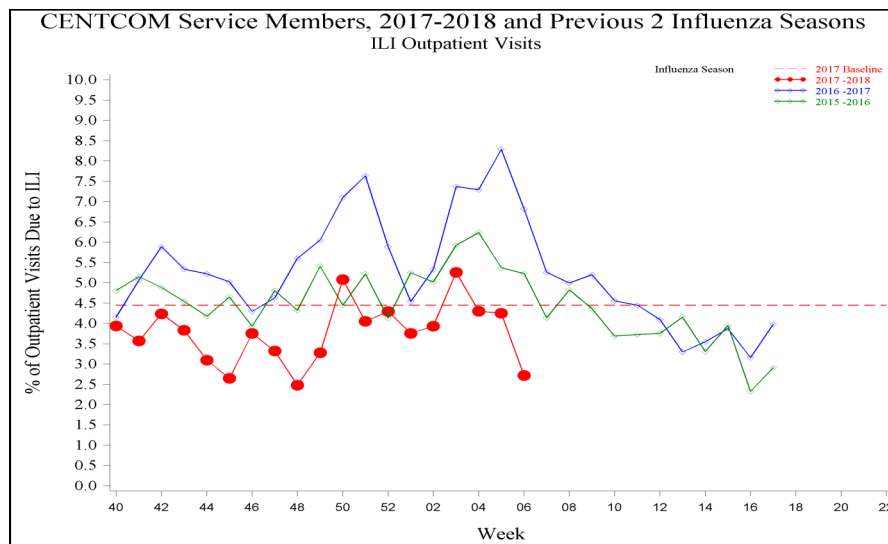
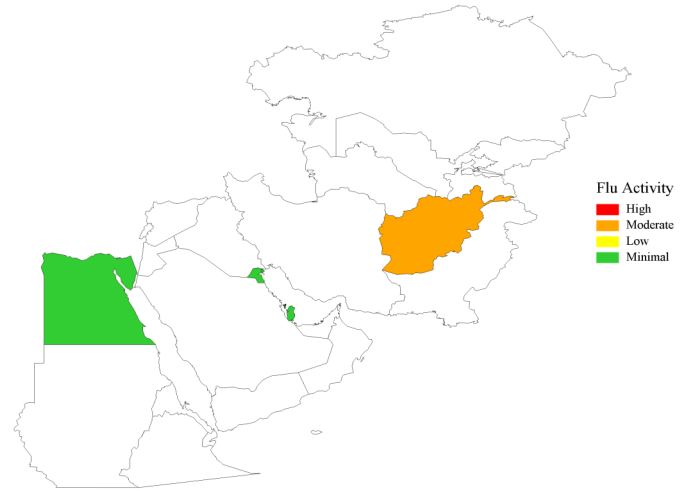


Central Command -- Week 06

In CENTCOM during week 06

- ◆ Influenza activity decreased to moderate in Afghanistan and remained minimal in other CENTCOM locations with available data.
- ◆ The percentage of outpatient visits due to ILI continued to decrease and remained below baseline and previous seasons for week 06.

CENTCOM, Influenza Activity, During the Last 2 Weeks



Southern Command -- Week 06

In SOUTHCOM during week 06

- ◆ Influenza activity remained minimal in Honduras for week 06.

Description:

Maps, figures and tables are stratified by Combatant Commands (CCMD). The map provides a measure of influenza activity by state or country within each CCMD for the past two weeks for service members. Influenza activity is defined by the percentage of outpatient visits associated with an Influenza-like Illness (ILI) for each week compared to baseline levels of influenza activity. Additionally, a pie graph by US region or country is generated to display the distribution of influenza types and subtype identified from positive laboratory tests for the past two weeks combined.

Influenza activity: Percentage of Outpatient Visits Associated with ILI:

The percentage of all outpatient visits for ILI is calculated each week for all service members, regardless of component. These data are presented as a map of the past two weeks' activity and a figure to display the entire season's data compared to the two prior seasons and baseline. For the map, the activity level compares the mean reported percent of visits due to ILI for the past two weeks to the mean reported percent of visits due to ILI during baseline weeks. Baseline weeks are defined as non-influenza weeks (weeks 22-39) over the past 3 years.

There are four activity levels reported on each map. The activity level corresponds to the number of standard deviations (SD) below, at or above the mean for the current week compared to the mean of the baseline weeks. Activity levels are classified as minimal, low, moderate, and high. Minimal activity corresponds to an influenza percentage that is less than 2 SD above the mean. Low activity corresponds to an influenza percentage that is equal to or greater than 2 SD above the mean, but less than 4 SD above the mean. Moderate activity corresponds to an influenza percentage that is equal to or greater than 4 SD above the mean, but less than 6 SD above the mean. High activity corresponds to an influenza percentage that is equal to or greater than 6 SD above the mean.

Influenza Positive Specimens:

Lab results from PCR, viral culture, and rapid influenza assays are reported. Although the inclusion of rapid tests may underestimate the weekly and cumulative percent positive estimates due to false negatives, visibility of the positive rapid results provides valuable information for this surveillance report. Influenza types/subtypes are categorized as influenza A not subtyped (A subtype na), influenza A/H1 (A H1), influenza A/H3 (A H3), influenza A and B co-infection (A B), and influenza B (B).

Map: Each US region or country with available data contains a pie chart that displays the distribution of influenza types and subtypes for that area for the past two weeks combined. Two weeks of data are combined instead of using just the current week's data due to delays in reporting of laboratory results.

Figure and Table: Each week, using the total number of influenza laboratory tests performed and the positive test results, the proportions positive for each serotype of influenza are calculated for service members and dependents separately.

Data Sources and Case Definitions:

Medical encounter and demographic data from the Armed Forces Health Surveillance Branch's (AFHSB) Defense Medical Surveillance System (DMSS) are used to generate this report. In addition, health-level 7 (HL-7) format laboratory data is provided by the Navy and Marine Corps Public Health Center (NMCPHC) EpiData Center Division. For the past seasons and baseline calculations, ICD-9 codes from outpatient encounters are used to identify influenza activity. The outcome of influenza activity based on ICD-9 codes is defined using the combined codes for ILI (79.99, 382.9, 460, 461.9, 465.8, 465.9, 466.0, 486, 487.0, 487.1, 487.8, 488, 490, 780.6, or 786.2). For the current season, ICD-10 codes from outpatient encounters are used to identify influenza activity. The outcome of influenza activity based on ICD-10 codes is defined using the combined codes for ILI (B97.89, H66.9, H66.90, H66.91, H66.92, H66.93, J00, J01.9, J01.90, J06.9, J09, J09.X, J09.X1, J09.X2, J09.X3, J09.X9, J10, J10.0, J10.00, J10.01, J10.08, J10.1, J10.2, J10.8, J10.81, J10.82, J10.83, J10.89, J11, J11.0, J11.00, J11.08, J11.1, J11.2, J11.8, J11.81, J11.82, J11.83, J11.89, J12.89, J12.9, J18, J18.1, J18.8, J18.9, J20.9, J40, R05, R50.9). An individual can only be counted as a case once per week.

NORTHCOM Regions:

The regions on the NORTHCOM map (bold, black outlines) are defined using the four US Census regions, with the exception of Hawaii and Guam which are a part of PACOM. *Northeast:* Connecticut, Maine, Massachusetts, New Hampshire, Rhode Island, Vermont, New Jersey, New York, Pennsylvania, Puerto Rico, and the U.S. Virgin Islands. *South:* Delaware, the District of Columbia, Maryland, Virginia, West Virginia, Alabama, Florida, Georgia, Kentucky, Mississippi, North Carolina, South Carolina, Tennessee, Arkansas, Louisiana, Texas, and Oklahoma. *Midwest:* Illinois, Indiana, Michigan, Minnesota, Ohio, Wisconsin, Iowa, Kansas, Missouri, Nebraska, North Dakota, and South Dakota. *West:* New Mexico, Colorado, Montana, Utah, Wyoming, Arizona, California, Nevada, Alaska, Idaho, Oregon, and Washington.

(All data are preliminary and subject to change as updated data is received)