



DEPARTMENT OF DEFENSE (AFHSB) Seasonal Influenza Surveillance Summary

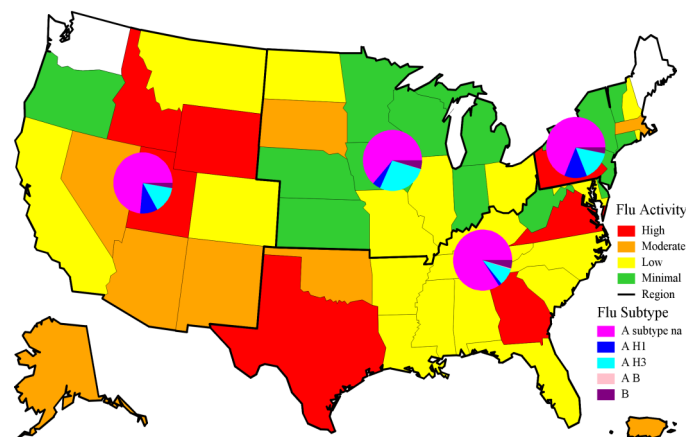
Northern Command -- Week 09 (24 February 2019— 02 March 2019)



In NORTHCOM during week 09

- ◆ Influenza activity continued to increase, especially in the mid-West. There was high activity in Idaho, Utah, Wyoming, Texas, Georgia, Virginia, and Pennsylvania.
- ◆ The percentage of outpatient visits due to ILI decreased, but remained above baseline and previous seasons.
- ◆ The percentage of positive lab tests continued to increase to 25.2% for service members and 31.2% for other beneficiaries for week 09.
- ◆ Among typed influenza A specimens, influenza A/H3N2 has become the predominate subtype for the past 4 weeks.
- ◆ Twelve influenza hospitalizations (RMEs) were reported among service members (3) and other beneficiaries (9) for week 09. (Season totals: 30 Service members and 179 other beneficiaries)

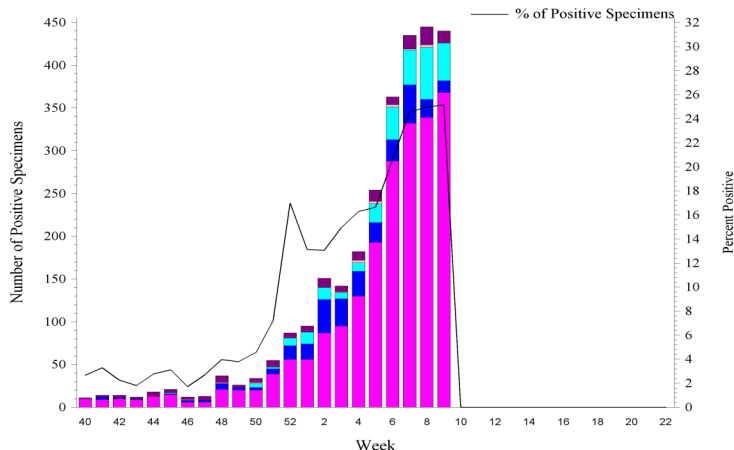
NORTHCOM Service Members, Influenza Activity and Virus Subtype, During the Last 2 Weeks



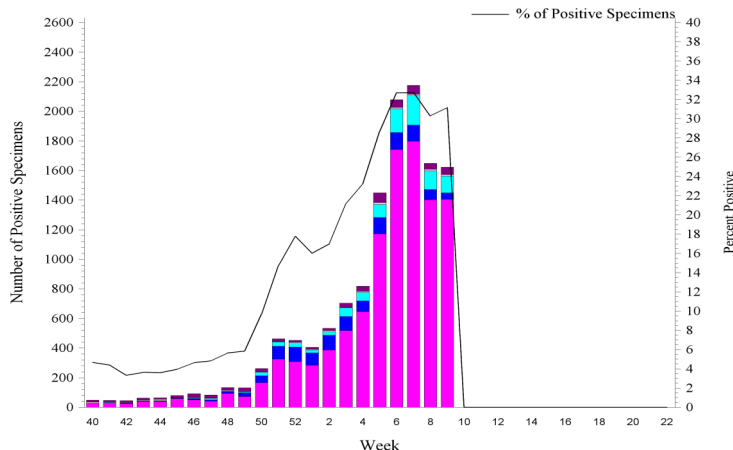
2018 – 2019 NORTHCOM Season Totals

	A/H1N1	A/H3N2	A/Untyped	Flu B	AB	Overall % Positive
Service Members	291	268	2122	163	17	13.76
Dependents	1098	963	10637	595	108	20.05

NORTHCOM Service Members, Influenza Positive Specimens Reported to AFHSB

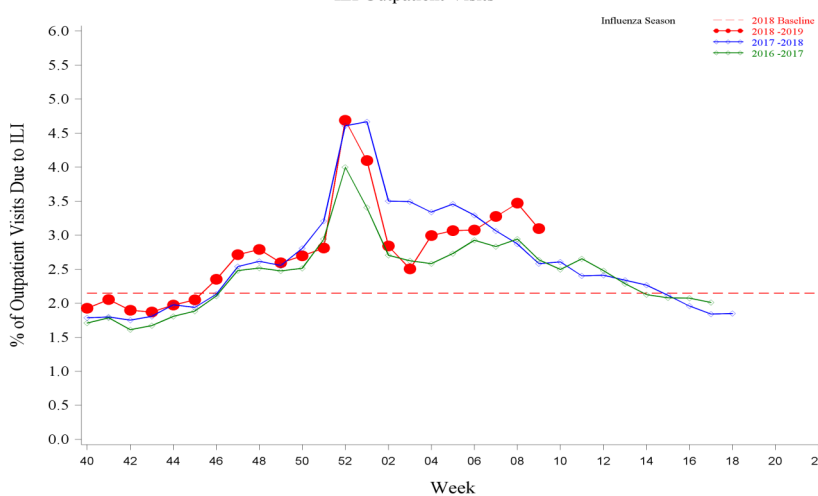


NORTHCOM Beneficiaries, Influenza Positive Specimens Reported to AFHSB



Disclaimer: Medical data from Military Treatment Facilities that are using MHS GENESIS are not available in DMSS. This includes Naval Hospital Oak Harbor, Naval Hospital Bremerton, Air Force Medical Services Fairchild, and Madigan Army Medical Center. Therefore, individuals who are expected to seek care at one of these facilities are currently being removed from the study population as we will not capture their medical encounters.

NORTHCOM Service Members, 2018-2019 and Previous 2 Influenza Seasons ILI Outpatient Visits

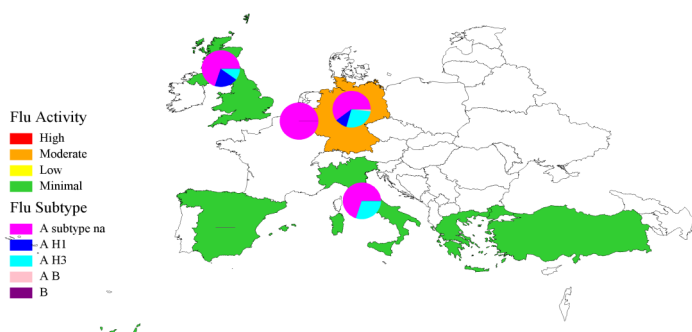
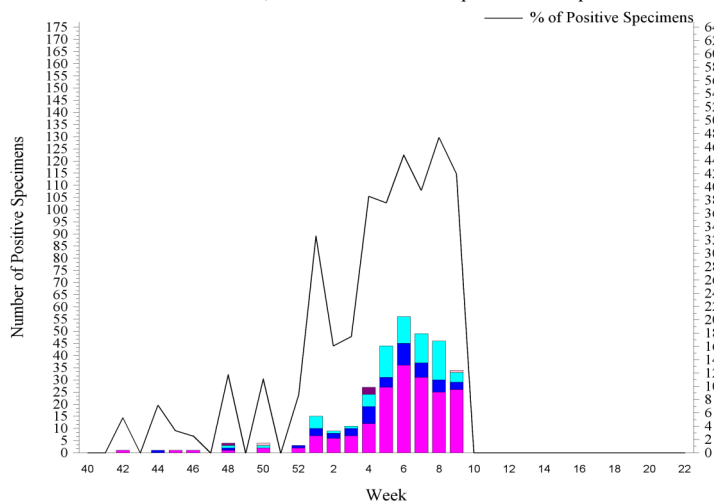
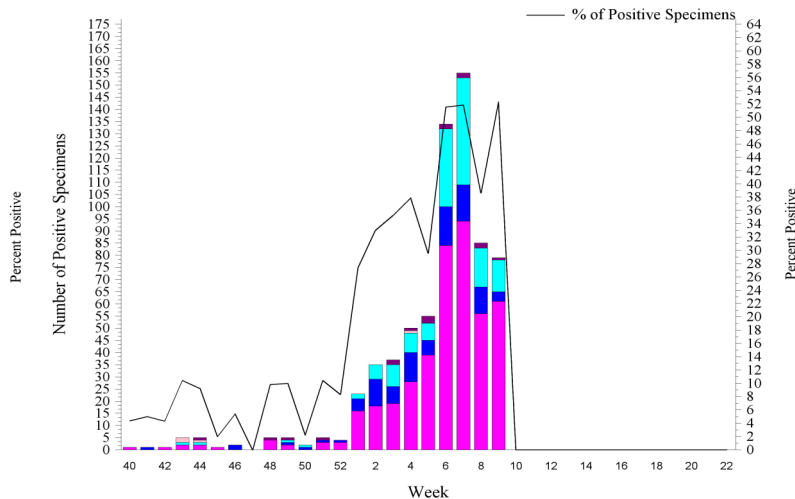
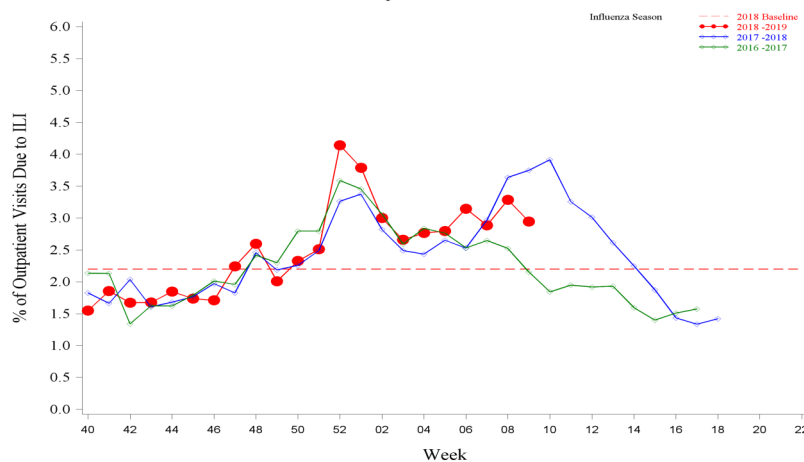


For inquiries or comments please contact dha.ncr.health-surv.list.ib-alert-response@mail.mil

**European Command -- Week 09****In EUCOM during week 09**

- ◆ Influenza activity was minimal across EUCOM, with the exception of Germany which had moderate activity.
- ◆ The percentage of outpatient visits due to ILI decreased and was above baseline and similar to previous seasons.
- ◆ The percentage of positive lab tests remained high at 42.0% for service members and 52.3% for other beneficiaries for week 09.
- ◆ Among typed influenza A specimens, A/H3N2 has become the predominate subtype in EUCOM.
- ◆ Two influenza hospitalizations (RMEs) were reported among a service member (1) and an other beneficiary (1) for week 09. (Season totals: 11 Service members and 30 other beneficiaries)

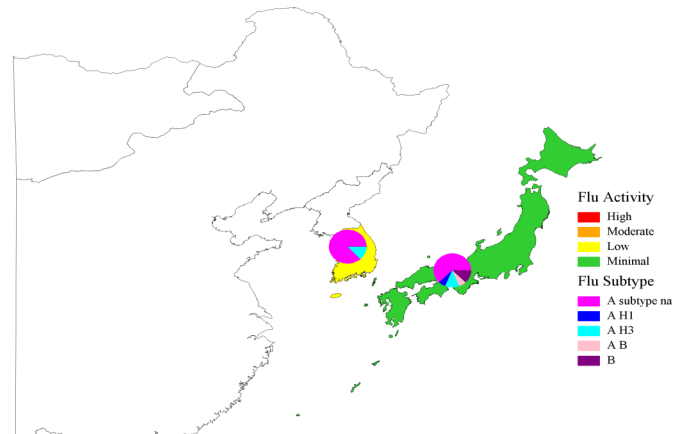
EUCOM Service Members, Influenza Activity and Virus Subtype, During the Last 2 Weeks

**EUCOM Service Members, Influenza Positive Specimens Reported to AFHSB****EUCOM Beneficiaries, Influenza Positive Specimens Reported to AFHSB****EUCOM Service Members, 2018-2019 and Previous 2 Influenza Seasons****2018-2019 EUCOM Season Totals**

	A/H1N1	A/H3N2	A/Untyped	Influenza B	AB	Overall % Positive
Service Members	45	70	185	4	2	27.01
Dependents	94	141	434	17	4	32.38

**Indo-Pacific Command -- Week 09****In PACOM during week 09**

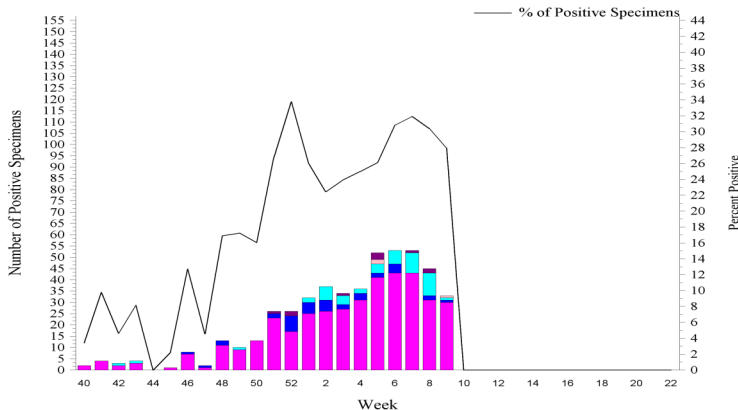
- ◆ Influenza activity was minimal in Japan and Guam, but increased to low in the Republic of Korea and Hawaii.
- ◆ The percentage of outpatient visits due to ILI decreased and was at baseline and below previous seasons.
- ◆ The percentage of positive lab tests decreased to 28.0% for service members and 23.3% for other beneficiaries during week 09.
- ◆ Overall, among typed influenza A specimens, similar frequencies of influenza A/H1N1 (54%) and A/H3N2 (46%) were seen in PACOM.
- ◆ No influenza hospitalizations (RMEs) were reported for week 09. (Season totals: 3 Service member and 13 other beneficiaries)

PACOM Service Members, Influenza Activity and Virus Subtype, During the Last 2 Weeks
South Korea and Japan

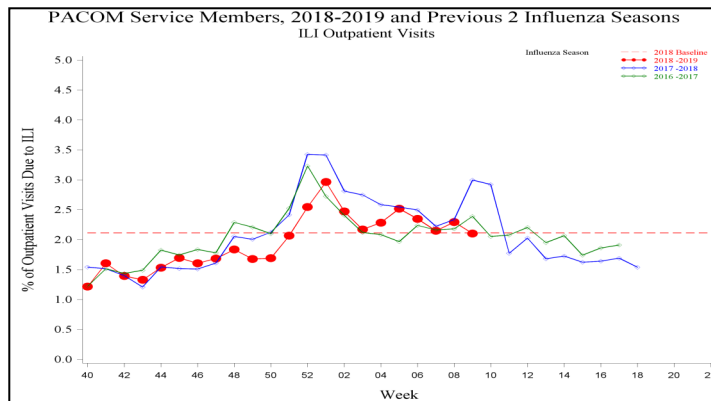
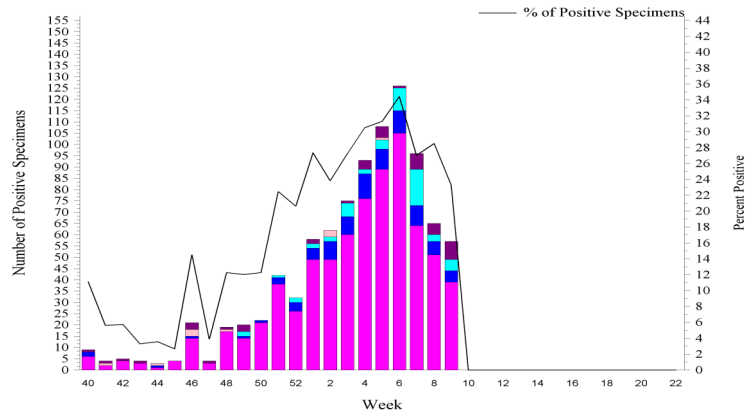
PACOM: Guam and Hawaii Influenza Activity and HL7 Test Positive (MAP: SM+BN, 2 wks)						
Area Name	Influenza Activity	HL7 Type				
		A(H1)	A(H3)	A Untyped	B	AB
Guam	Minimal	0	0	2	5	0
Hawaii*	Low	13	10	56	3	0

*Hawaii HL7 Type counts may include samples received from Guam, but tested in Hawaii

PACOM Service Members, Influenza Positive Specimens Reported to AFHSB



PACOM Beneficiaries, Influenza Positive Specimens Reported to AFHSB

**2018-2019 PACOM Season Totals**

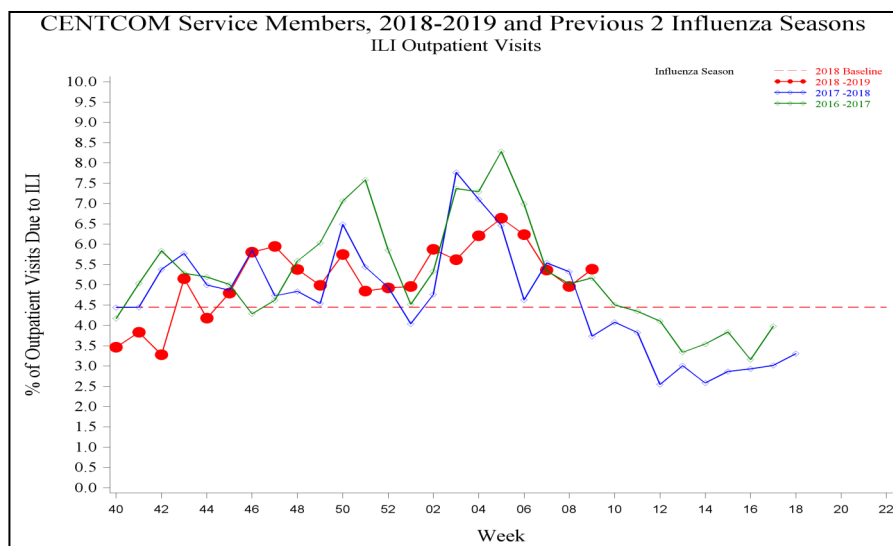
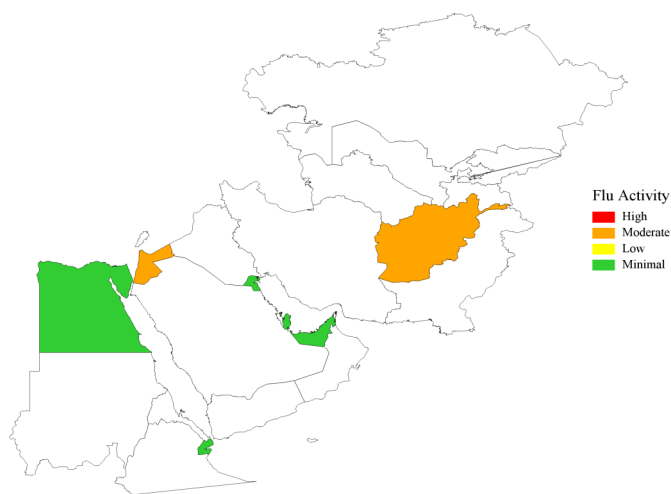
	A/H1N1	A/H3N2	A/Untyped	Flu B	Flu AB	Overall % Positive
Service Members	37	47	390	10	3	22.19
Dependents	84	55	735	45	10	21.74

For inquiries or comments please contact dha.ncr.health-surv.list.ib-alert-response@mail.mil

**Central and Africa Command -- Week 09****In CENTCOM and AFRICOM during week 09**

- ◆ Influenza activity was moderate in Afghanistan and Jordan, but was minimal in other CENTCOM countries with available data.
- ◆ The overall percentage of outpatient visits due to ILI increased and was above baseline and previous seasons.
- ◆ In Afghanistan, influenza activity remained moderate and the percentage of outpatient visits due to ILI decreased to 3.1%.
- ◆ In Kuwait, influenza activity decreased to minimal and the percentage of outpatient visits due to ILI decreased to 4.5%.
- ◆ In Djibouti, influenza activity remained minimal. The percentage of outpatient visits due to ILI remained stable at 1.5% for week 09.
- ◆ No influenza hospitalizations (RMEs) were reported for week 09. (Season totals: 0 Service members)

CENTCOM, Influenza Activity, During the Last 2 Weeks

**Southern Command -- Week 09****In SOUTHCOM during week 09**

- ◆ Influenza activity in Honduras was minimal for week 09. The percentage of outpatient visits due to ILI was 5.1% for week 09.
- ◆ Influenza activity remained minimal in Cuba for week 09. The percentage of outpatient visits due to ILI decreased to 1.0% for service members and 2.5% for other beneficiaries.

2018-2019 Cuba Season Totals						
	A/H1N1	A/H3N2	A/Untyped	Flu B	Flu AB	Total Tested
Service Members	0	0	0	0	0	13
Dependents	0	0	1	1	0	13

For inquiries or comments please contact dha.ncr.health-surv.list.ib-alert-response@mail.mil

Description:

Maps, figures and tables are stratified by Combatant Commands (CCMD). The map provides a measure of influenza activity by state or country within each CCMD for the past two weeks for service members. Influenza activity is defined by the percentage of outpatient visits associated with an Influenza-like Illness (ILI) for each week compared to baseline levels of influenza activity. Additionally, a pie graph by US region or country is generated to display the distribution of influenza types and subtype identified from positive laboratory tests for the past two weeks combined.

Influenza activity: Percentage of Outpatient Visits Associated with ILI:

The percentage of all outpatient visits for ILI is calculated each week for all service members, regardless of component. These data are presented as a map of the past two weeks' activity and a figure to display the entire season's data compared to the two prior seasons and baseline. For the map, the activity level compares the mean reported percent of visits due to ILI for the past two weeks to the mean reported percent of visits due to ILI during baseline weeks. Baseline weeks are defined as non-influenza weeks (weeks 22-39) over the past 3 years.

There are four activity levels reported on each map. The activity level corresponds to the number of standard deviations (SD) below, at or above the mean for the current week compared to the mean of the baseline weeks. Activity levels are classified as minimal, low, moderate, and high. Minimal activity corresponds to an influenza percentage that is less than 2 SD above the mean. Low activity corresponds to an influenza percentage that is equal to or greater than 2 SD above the mean, but less than 4 SD above the mean. Moderate activity corresponds to an influenza percentage that is equal to or greater than 4 SD above the mean, but less than 6 SD above the mean. High activity corresponds to an influenza percentage that is equal to or greater than 6 SD above the mean.

Influenza Positive Specimens:

Lab results from PCR, viral culture, and rapid influenza assays are reported. Although the inclusion of rapid tests may underestimate the weekly and cumulative percent positive estimates due to false negatives, visibility of the positive rapid results provides valuable information for this surveillance report. Influenza types/subtypes are categorized as influenza A not subtyped (A subtype na), influenza A/H1 (A H1), influenza A/H3 (A H3), influenza A and B co-infection (A B), and influenza B (B).

Map: Each US region or country with available data contains a pie chart that displays the distribution of influenza types and subtypes for that area for the past two weeks combined. Two weeks of data are combined instead of using just the current week's data due to delays in reporting of laboratory results.

Figure and Table: Each week, using the total number of influenza laboratory tests performed and the positive test results, the proportions positive for each serotype of influenza are calculated for service members and dependents separately.

Data Sources and Case Definitions:

Medical encounter and demographic data from the Armed Forces Health Surveillance Branch's (AFHSB) Defense Medical Surveillance System (DMSS) are used to generate this report. In addition, health-level 7 (HL-7) format laboratory data is provided by the Navy and Marine Corps Public Health Center (NMCPHC) EpiData Center Division. For the past seasons and baseline calculations, ICD-9 codes from outpatient encounters are used to identify influenza activity. The outcome of influenza activity based on ICD-9 codes is defined using the combined codes for ILI (79.99, 382.9, 460, 461.9, 465.8, 465.9, 466.0, 486, 487.0, 487.1, 487.8, 488, 490, 780.6, or 786.2). For the current season, ICD-10 codes from outpatient encounters are used to identify influenza activity. The outcome of influenza activity based on ICD-10 codes is defined using the combined codes for ILI (B97.89, H66.9, H66.90, H66.91, H66.92, H66.93, J00, J01.9, J01.90, J06.9, J09, J09.X, J09.X1, J09.X2, J09.X3, J09.X9, J10, J10.0, J10.00, J10.01, J10.08, J10.1, J10.2, J10.8, J10.81, J10.82, J10.83, J10.89, J11, J11.0, J11.00, J11.08, J11.1, J11.2, J11.8, J11.81, J11.82, J11.83, J11.89, J12.89, J12.9, J18, J18.1, J18.8, J18.9, J20.9, J40, R05, R50.9). An individual can only be counted as a case once per week.

NORTHCOM Regions:

The regions on the NORTHCOM map (bold, black outlines) are defined using the four US Census regions, with the exception of Hawaii and Guam which are a part of PACOM. *Northeast:* Connecticut, Maine, Massachusetts, New Hampshire, Rhode Island, Vermont, New Jersey, New York, Pennsylvania, Puerto Rico, and the U.S. Virgin Islands. *South:* Delaware, the District of Columbia, Maryland, Virginia, West Virginia, Alabama, Florida, Georgia, Kentucky, Mississippi, North Carolina, South Carolina, Tennessee, Arkansas, Louisiana, Texas, and Oklahoma. *Midwest:* Illinois, Indiana, Michigan, Minnesota, Ohio, Wisconsin, Iowa, Kansas, Missouri, Nebraska, North Dakota, and South Dakota. *West:* New Mexico, Colorado, Montana, Utah, Wyoming, Arizona, California, Nevada, Alaska, Idaho, Oregon, and Washington.

(All data are preliminary and subject to change as updated data is received)