

DoD Consolidated Influenza Surveillance Report

Week 42 (11 Oct 2020 — 17 Oct 2020)



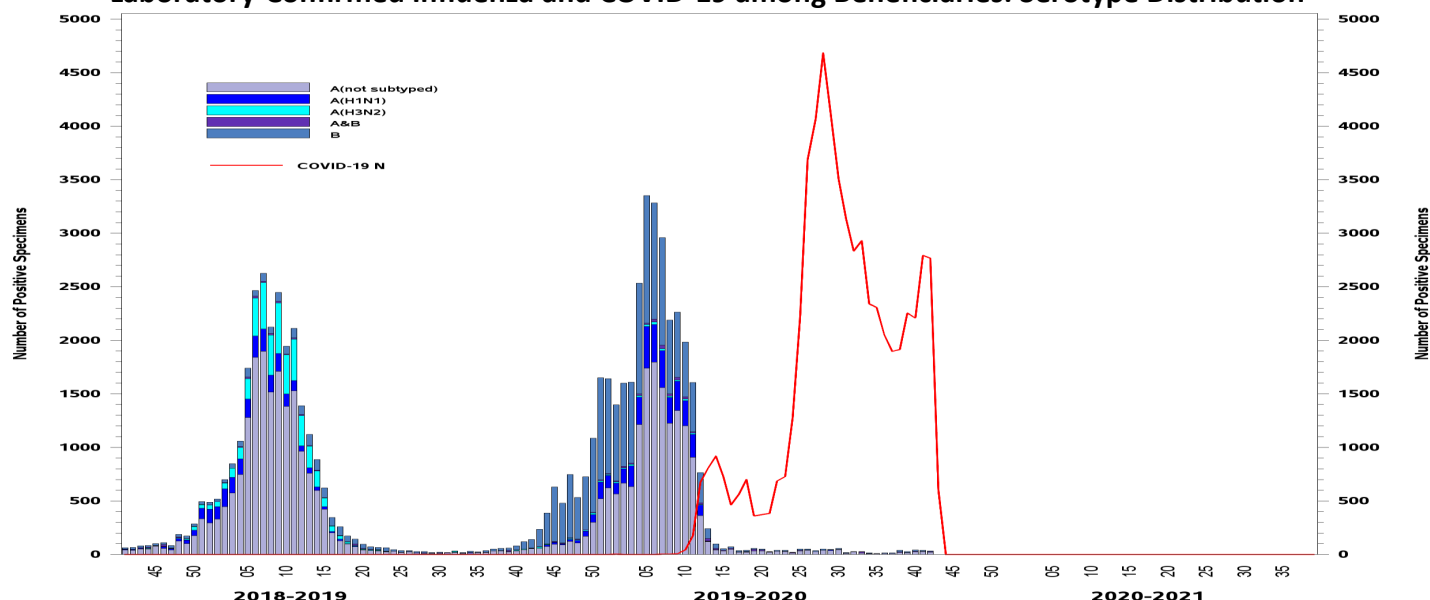
One Page Summary: Weekly Highlights

- For the beginning of the influenza season, laboratory-confirmed influenza cases, dispensed antiviral prescription counts, and inpatient counts among all beneficiaries were very low.
- COVID-19 mitigation efforts are likely contributing to the lower than normal influenza activity levels.
- Among active component Service Members, laboratory-confirmed influenza cases and antiviral prescriptions were low.
- ILI activity was minimal for the majority of installations.
- COVID-19 cases are accounting for 99% of all influenza and COVID-19 cases combined.
- There have been no laboratory-confirmed influenza hospitalization reported yet for the season.

Influenza Surveillance Indicators (2020-2021 season)

All Beneficiaries	Total Per Week		Trend	Activity Level
Laboratory Cases	33		◀▶	Low
Dispensed Antivirals	26		◀▶	Low
Severity				Activity Level
Inpatient Dispensed Antivirals	1			Low
Active Component				Activity Level
Laboratory Cases	16		◀▶	Low
Dispensed Antivirals	7		◀▶	Low
ILI Outpatient Visits	1%		◀▶	Minimal

Laboratory-Confirmed Influenza and COVID-19 among Beneficiaries: Serotype Distribution

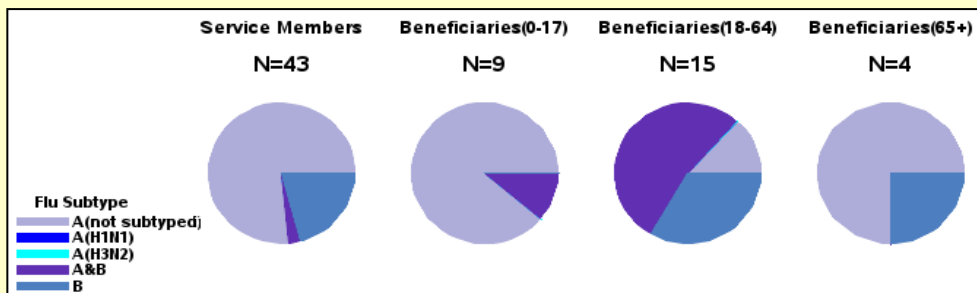


Disclaimer: Influenza lab data are not available from sites that have transitioned to MHS Genesis and encounter data may be delayed. Therefore, these sites are not included in the lab portion of this report and the accuracy of the activity levels may be impacted.

Confirmed Influenza and COVID-19 Cases (2020-2021 Season: Week 42)

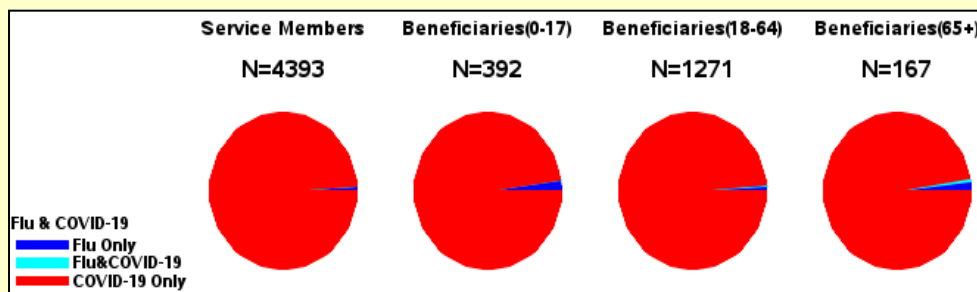
Number and Distribution of Influenza Positive Specimens since week 41, by Beneficiary Status and Serotype

- The number of laboratory-confirmed influenza positive specimens for the 2020-2021 season are very low. Out of the 71 positive specimens, the majority have been among Service Members (43).

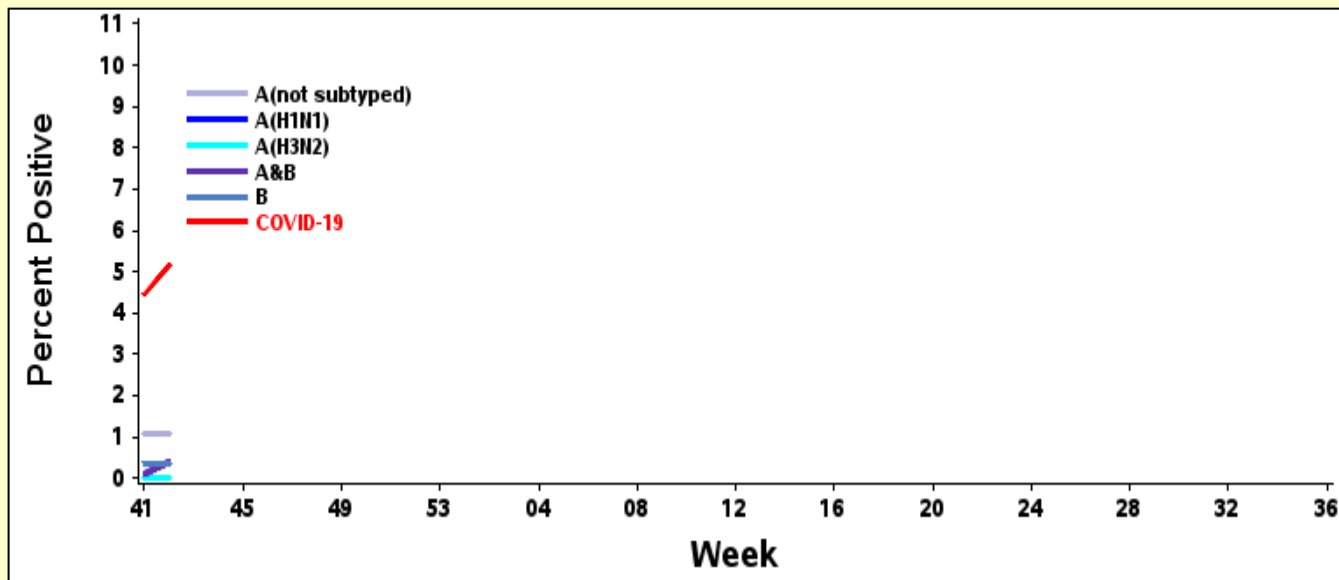


Number and Distribution of Influenza Positive Specimens and COVID-19 Cases since week 41, by Beneficiary Status

- COVID-19 cases predominated among all beneficiary categories, representing 99% of the influenza and COVID-19 cases. The majority of COVID-19 cases were among Service Members (4,393).



Percent of Specimens Positive for Influenza (by Serotype) or COVID-19

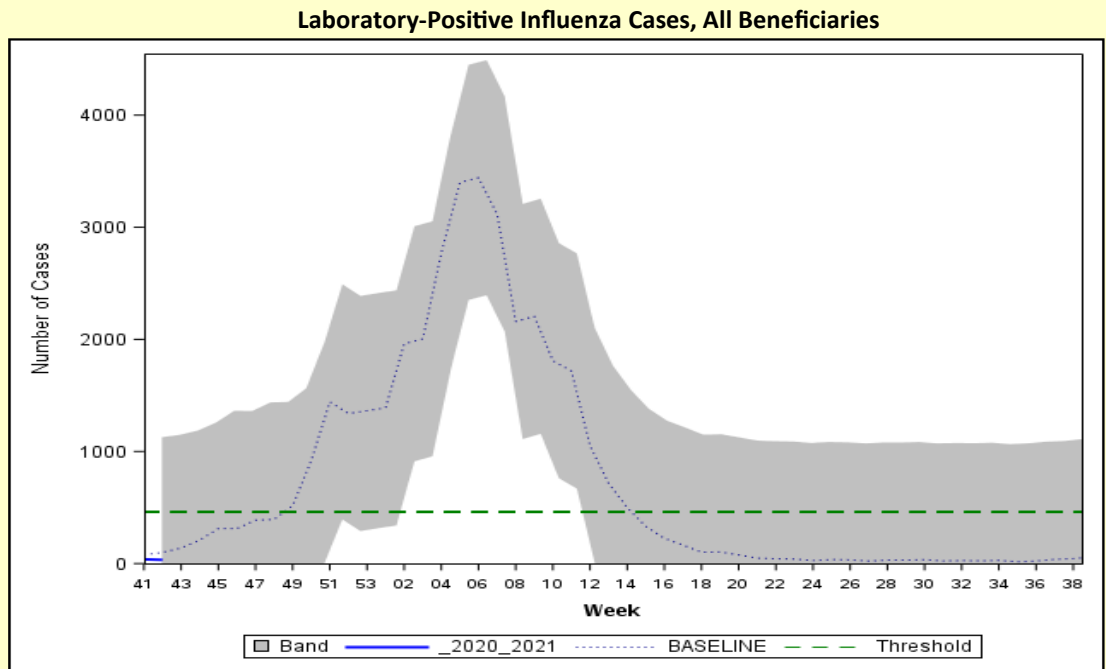


- The percent of specimens positive for influenza was low and stable at the start of the influenza season. Influenza A (not subtyped) has predominated to date. The percent of specimens tested for SARS-CoV-2 that were positive increased to more than 5% from week 41 to 42.

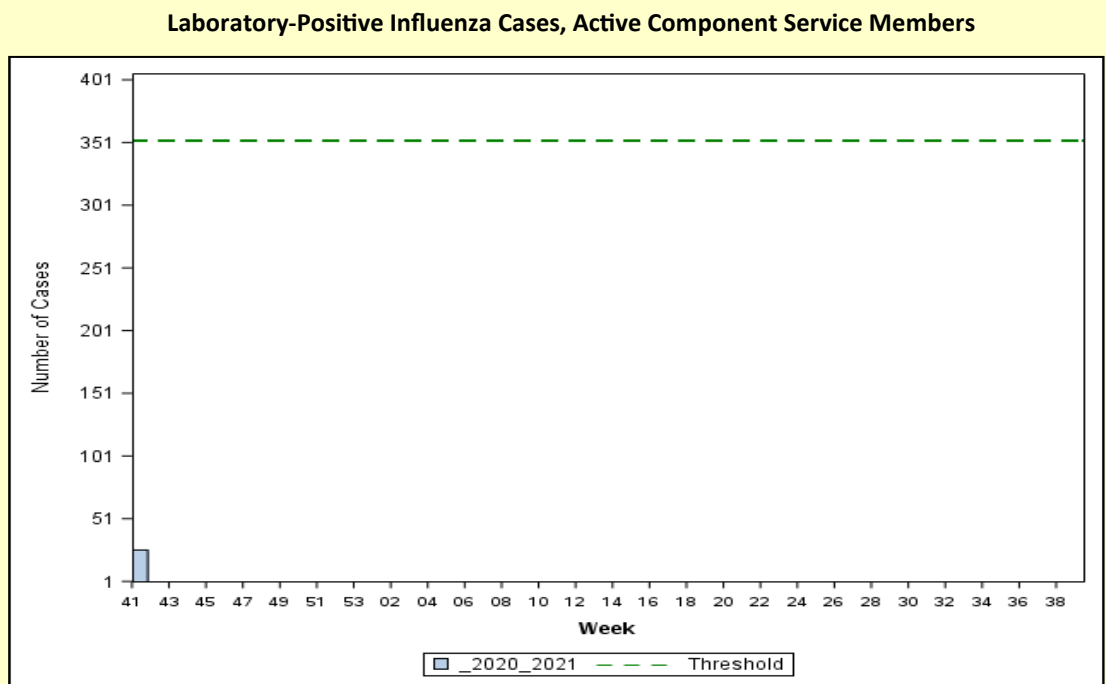
Disclaimer: Influenza lab data are not available from sites that have transitioned to MHS Genesis and encounter data may be delayed. Therefore, these sites are not included in the lab portion of this report and the accuracy of the activity levels may be impacted.

Laboratory-Confirmed Influenza (2020-2021 Season: Week 42)

- The number of laboratory-confirmed influenza cases among all beneficiaries was very low and was below baseline and well below the threshold.
- Band indicates one standard deviation above and below seasonal baseline estimates. Threshold indicates two standard deviations above off-season average.



- The number of active component Service Member laboratory-confirmed influenza cases was very low and well below the threshold.
- Threshold indicates two standard deviations above seasonal baseline estimates.

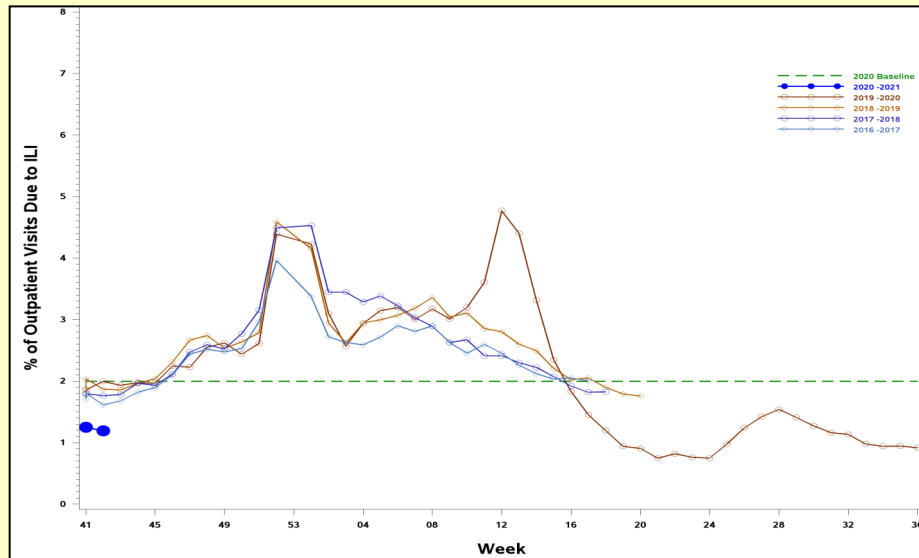


Disclaimer: Influenza lab data are not available from sites that have transitioned to MHS Genesis and encounter data may be delayed. Therefore, these sites are not included in the lab portion of this report and the accuracy of the activity levels may be impacted.

ILI and Dispensed Antiviral Prescriptions (2020-2021 Season: Week 42)

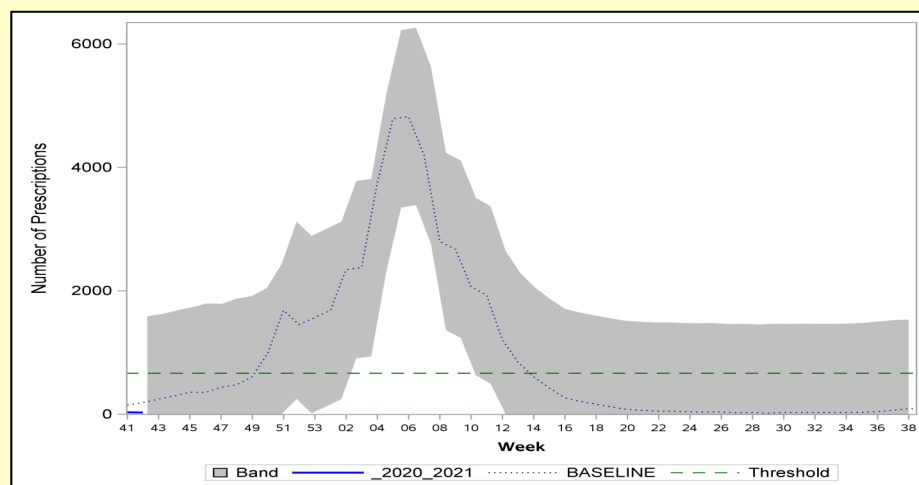
- The percentage of outpatient visits due to ILI was very low and well below baseline and prior seasons.
- COVID-19 mitigation efforts are likely contributing to the lower than normal number of ILIs.

**Percent of Outpatient Visits Due to ILI:
Service Members, 2016-2017 to 2020-2021 Seasons**



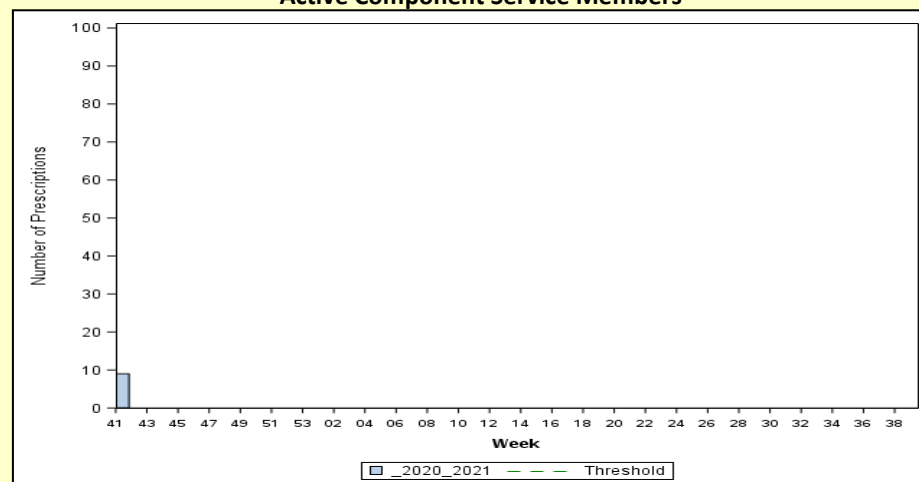
- Influenza-specific dispensed antiviral prescriptions among all beneficiaries remained very low and well below the weekly baseline and threshold.
- Band indicates one standard deviation above and below seasonal baseline estimates. Threshold indicates two standard deviations above off-season average.

Influenza-Specific Dispensed Antiviral Prescriptions, All Beneficiaries



**Influenza-Specific Dispensed Antiviral Prescriptions:
Active Component Service Members**

- The number of influenza-specific dispensed antiviral prescriptions among active component Service Members was very low.
- Threshold indicates two standard deviation above the overall weighted average during the season. However, there is not enough data for the season yet to calculate the threshold for this metric.



Disclaimer: Influenza lab data are not available from sites that have transitioned to MHS Genesis and encounter data may be delayed. Therefore, these sites are not included in the lab portion of this report and the accuracy of the activity levels may be impacted.

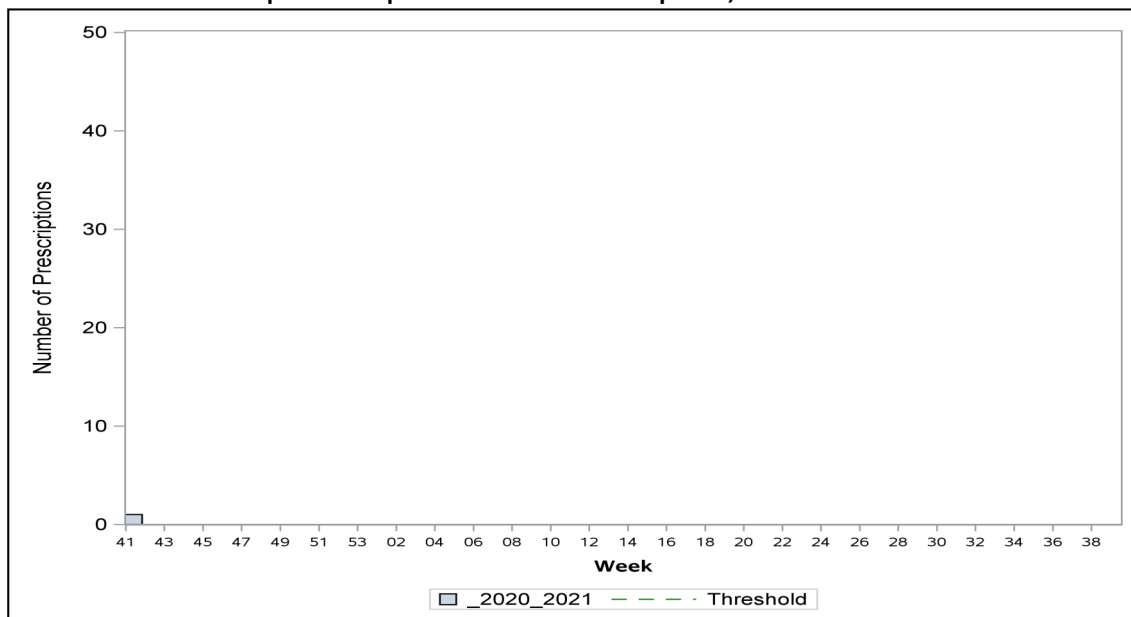
Severity: Hospitalized Influenza Metrics (2020-2021 Season: Week 42)

- There have been no laboratory-confirmed influenza hospitalizations reported for the 2020-2021 season yet.
- The number of inpatient influenza-specific dispensed antiviral prescriptions was very low.
- Thresholds indicates one standard deviation above the overall weighted average during the season. However, there is not enough data for the season yet to calculate thresholds for these metrics.

Hospitalized Laboratory-Positive Influenza Cases, All Beneficiaries

No influenza hospitalizations for the season yet.

Inpatient Dispensed Antivirals Prescriptions, All Beneficiaries



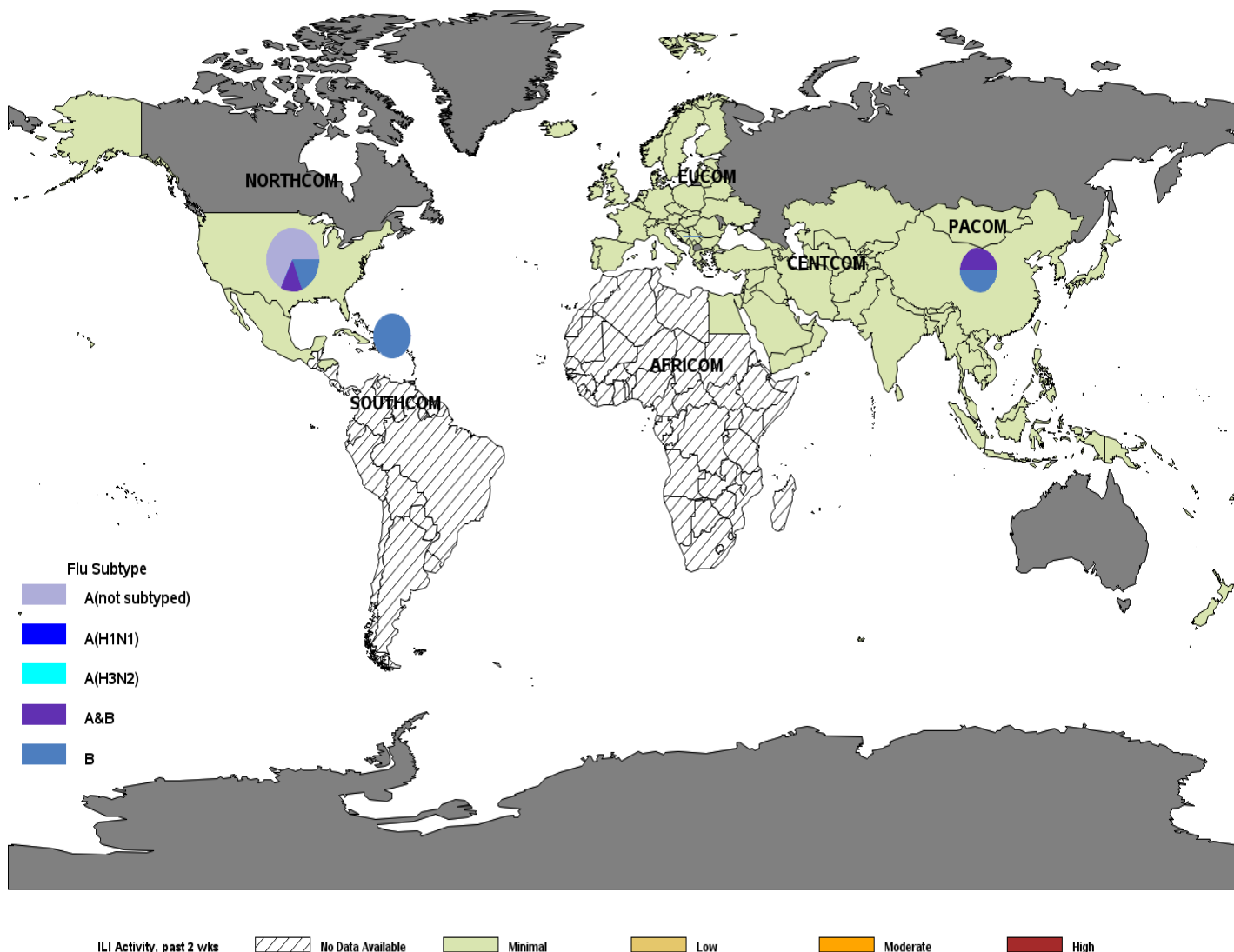
Disclaimer: Influenza lab data are not available from sites that have transitioned to MHS Genesis and encounter data may be delayed. Therefore, these sites are not included in the lab portion of this report and the accuracy of the activity levels may be impacted.

Influenza Activity: Geographic Combatant Command

(2020-2021 Season: Week 42)

- NORTHCOM: ILI activity was minimal. Although the number of laboratory-confirmed influenza cases is very low, the majority have been Influenza A (not subtyped).
- EUCOM: ILI activity was minimal. No influenza positive specimens have been reported for the season.
- INDOPACOM: ILI activity was minimal. Only 2 specimens have been positive for laboratory-confirmed influenza; an influenza B and an influenza A/B case.
- SOUTHCOM: ILI activity was minimal. Only 1 specimen has tested positive for influenza this season (influenza B).
- CENTCOM: ILI activity was minimal.

ILI Activity (Service Members) and Laboratory-Confirmed Influenza (All Beneficiaries)

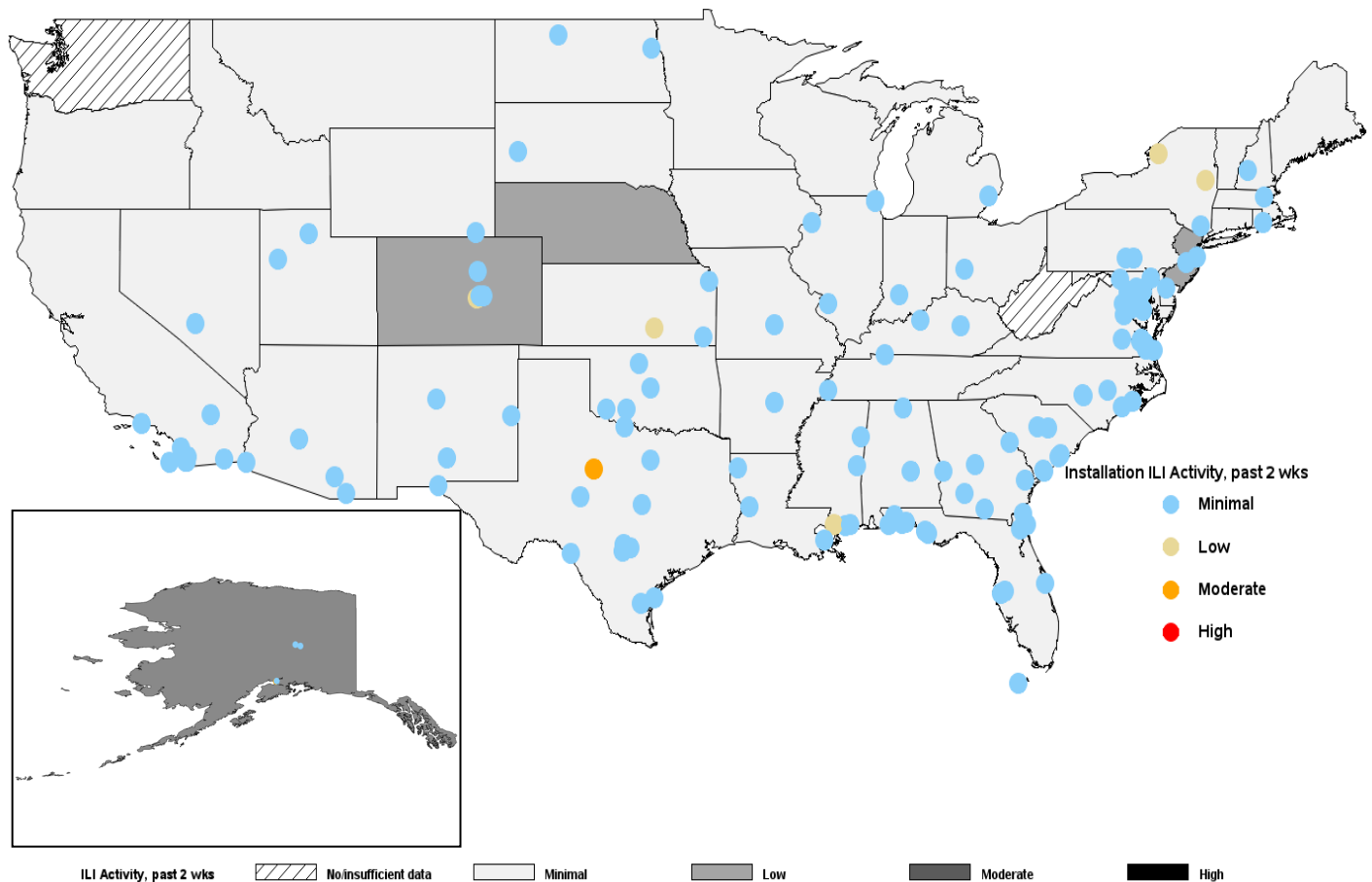


Influenza Activity: NORTHCOM (2020-2021 Season: Week 42)

**** The COVID-19 outbreak and its associated mitigation efforts occurring across the world, as well as healthcare seeking behavior, may have impacted ILI activity levels.**

- The majority of installations had minimal ILI activity.
- All states had minimal ILI activity, except for Alaska, Colorado, Nebraska, and New Jersey with had moderate activity.
- State level data includes both Military Treatment Facility (MTF) and outsourced care. Therefore, state activity levels may differ from the installation level data.
- Installation-level laboratory-confirmed influenza and COVID-19 case data can be found on pages 14-19 of the report.

ILI Activity (Service Members) by State and Installation



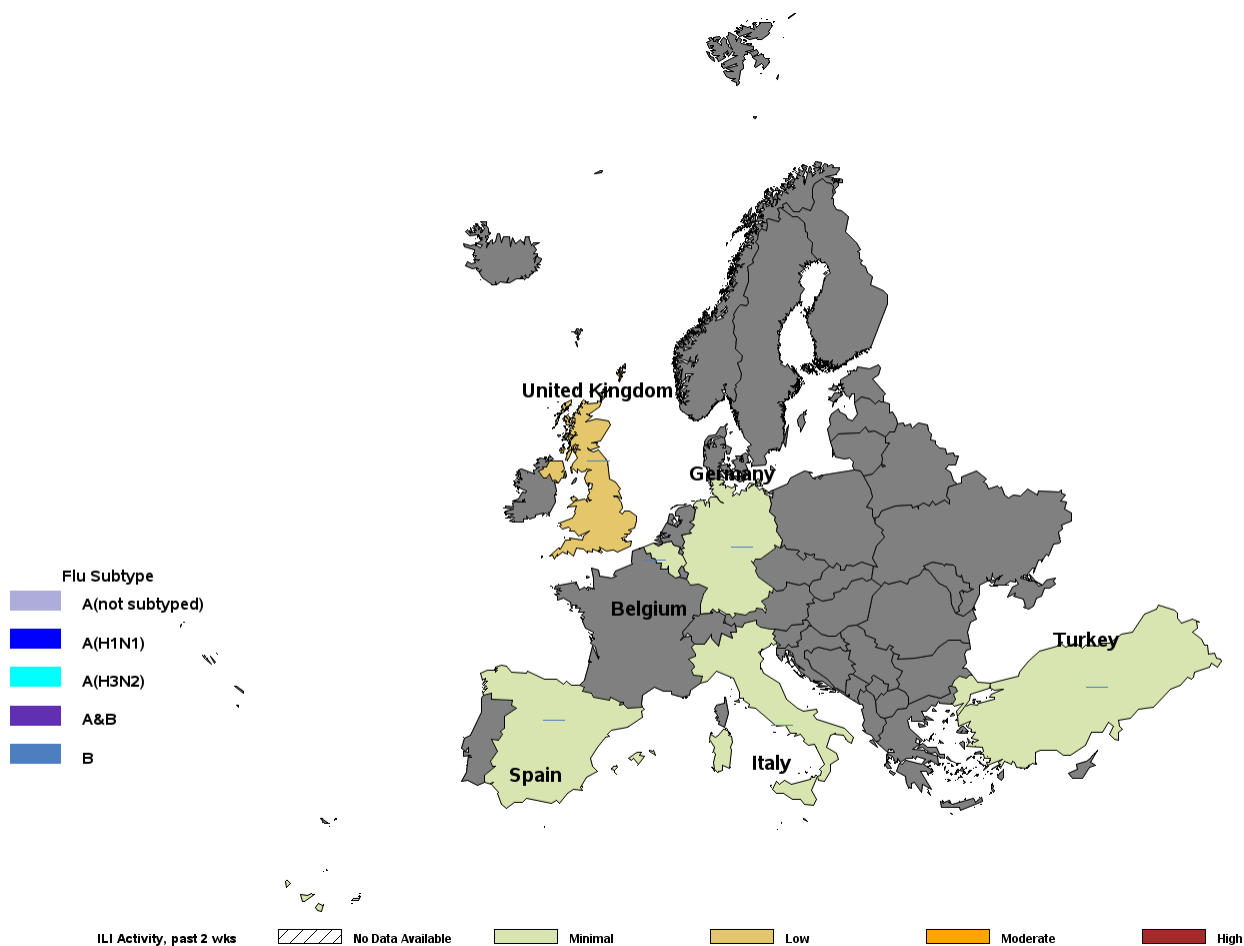
Disclaimer: Influenza lab data are not available from sites that have transitioned to MHS Genesis and encounter data may be delayed. Therefore, these sites are not included in the lab portion of this report and the accuracy of the activity levels may be impacted.

Influenza and COVID-19 Activity: EUCOM (2020-2021 Season: Week 42)

**** The COVID-19 outbreak and its associated mitigation efforts occurring across the world, as well as healthcare seeking behavior, may have impacted ILI activity levels.**

- ILI activity was minimal in all countries with available data, except for the United Kingdom, which had low ILI activity.
- No laboratory-confirmed influenza cases in EUCOM have been reported for the 2020-2021 season.
- Installation-level laboratory-confirmed influenza and COVID-19 case data for EUCOM can be found on page 9 of the report.

ILI Activity (Service Members) and Laboratory-Confirmed Influenza (All Beneficiaries)



*Locations colored in dark gray have no Service Member medical encounter data.

Confirmed Influenza and COVID-19: EUCOM (2020-2021 Season: Week 42)

Laboratory-Confirmed Influenza by Installation (All Beneficiaries)

Country	Location	Service	A (not sub-typed)		A (H1N1)		A (H3N2)		A & B		B		Total positive	Total tested	% Positive	Change from past 2 weeks
			2 wks	Season	2 wks	Season	2 wks	Season	2 wks	Season	2 wks	Season	2 wks	2 wks	2 wks	
Belgium	Shape	A	0	0	0	0	0	0	0	0	0	0	0	5	0	↔
Germany	Barton Barracks	A	0	0	0	0	0	0	0	0	0	0	0	0	0	↔
Germany	Landstuhl RMC	A	0	0	0	0	0	0	0	0	0	0	0	41	0	↔
Germany	Patch Barracks	A	0	0	0	0	0	0	0	0	0	0	0	0	0	↔
Germany	Ramstein AB	F	0	0	0	0	0	0	0	0	0	0	0	0	0	↔
Germany	Spangdahlem AB	F	0	0	0	0	0	0	0	0	0	0	0	21	0	↔
Germany	USAG Bavaria	A	0	0	0	0	0	0	0	0	0	0	0	7	0	↔
Germany	USAG Hohenfels/Amberg	A	0	0	0	0	0	0	0	0	0	0	0	1	0	↔
Germany	USAG Kaiserslautern	A	0	0	0	0	0	0	0	0	0	0	0	2	0	↔
Germany	USAG Katterbach	A	0	0	0	0	0	0	0	0	0	0	0	21	0	↔
Germany	USAG Wiesbaden	A	0	0	0	0	0	0	0	0	0	0	0	0	0	↔
Italy	Aviano AB	F	0	0	0	0	0	0	0	0	0	0	0	12	0	↔
Italy	NAS Sigonella	N	0	0	0	0	0	0	0	0	0	0	0	11	0	↔
Italy	NSA Naples	N	0	0	0	0	0	0	0	0	0	0	0	17	0	↔
Italy	USAG Italy	A	0	0	0	0	0	0	0	0	0	0	0	26	0	↔
Spain	NS Rota	N	0	0	0	0	0	0	0	0	0	0	0	13	0	↔
Turkey	Incirlik AB	F	0	0	0	0	0	0	0	0	0	0	0	5	0	↔
United Kingdom	RAF Alconbury	F	0	0	0	0	0	0	0	0	0	0	0	0	0	↔
United Kingdom	RAF Croughton	F	0	0	0	0	0	0	0	0	0	0	0	0	0	↔
United Kingdom	RAF Lakenheath	F	0	0	0	0	0	0	0	0	0	0	0	207	0	↔

COVID-19 Cases Since Week 41 by Installation (All Beneficiaries)

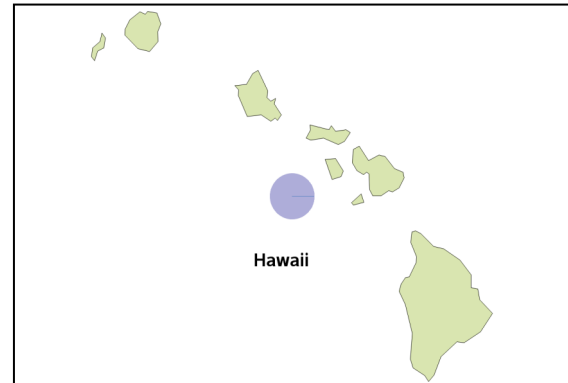
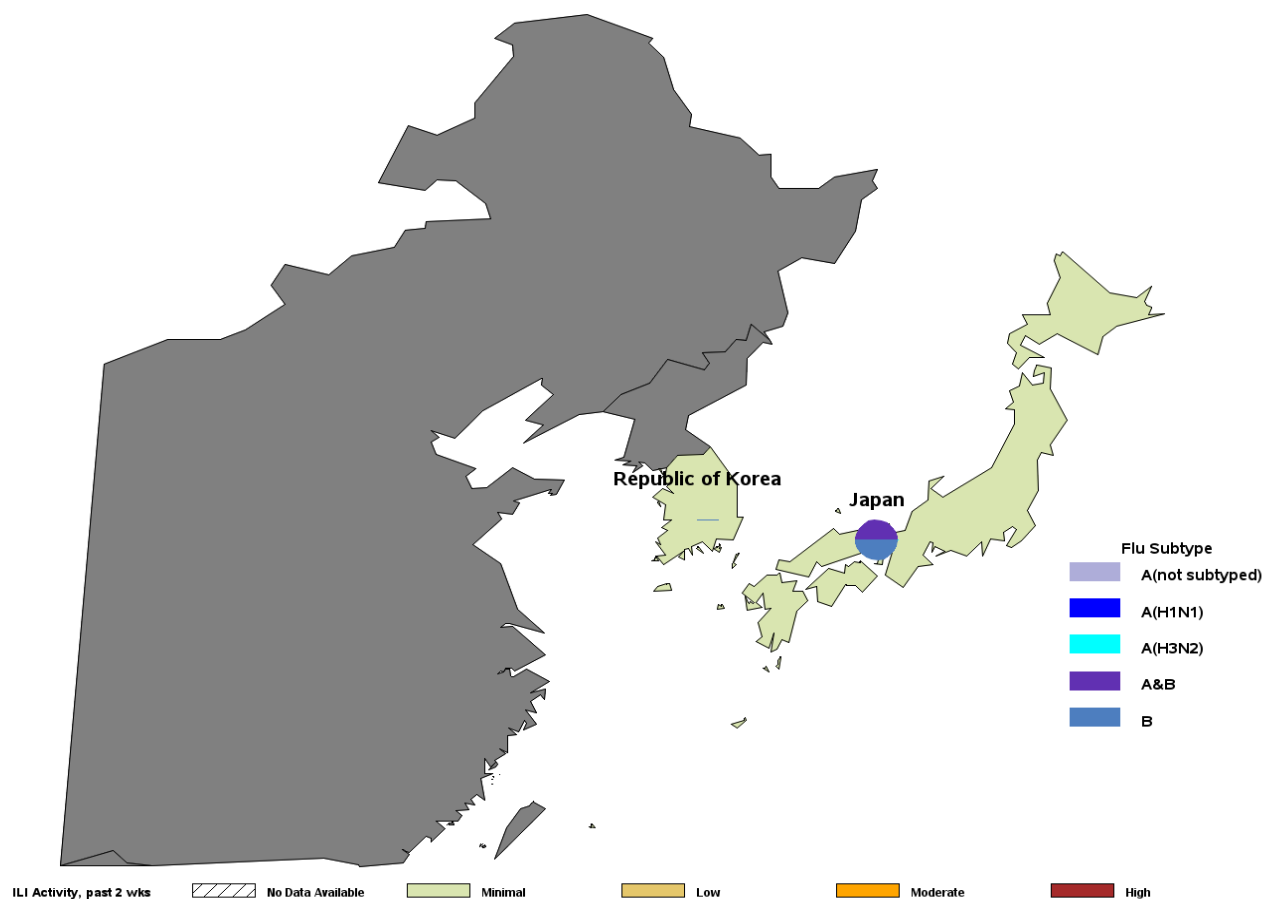
Country	Location	Service	COVID-19		Change from past 2 weeks
			2 wks	Season	
Belgium	Shape	A	5	5	↑
Germany	Barton Barracks	A	0	0	↔
Germany	Landstuhl RMC	A	113	113	↑
Germany	Patch Barracks	A	0	0	↔
Germany	Ramstein AB	F	8	8	↔
Germany	Spangdahlem AB	F	3	3	↑
Germany	USAG Bavaria	A	7	7	↑
Germany	USAG Hohenfels/Amberg	A	1	1	↔
Germany	USAG Kaiserslautern	A	5	5	↔
Germany	USAG Katterbach	A	1	1	↔
Germany	USAG Wiesbaden	A	4	4	↓
Italy	Aviano AB	F	12	12	↑
Italy	NAS Sigonella	N	2	2	↔
Italy	NSA Naples	N	10	10	↑
Italy	USAG Italy	A	13	13	↑
Spain	NS Rota	N	29	29	↑
Turkey	Incirlik AB	F	0	0	↔
United Kingdom	RAF Alconbury	F	0	0	↔
United Kingdom	RAF Croughton	F	1	1	↓
United Kingdom	RAF Lakenheath	F	25	25	↓

Influenza Activity: INDOPACOM (2020-2021 Season: Week 42)

**** The COVID-19 outbreak and its associated mitigation efforts occurring across the world, as well as healthcare seeking behavior, may have impacted ILI activity levels.**

- ILI activity was minimal in all countries with available data.
- Only 2 laboratory-confirmed influenza cases have been reported for INDOPACOM for the 2020-2021 season. One was an influenza B case and the other was an influenza A/B case.
- Installation-level laboratory-confirmed influenza and COVID-19 case data for INDOPACOM can be found on page 11 of the report.

ILI Activity (Service Members) and Laboratory-Confirmed Influenza (All Beneficiaries)



Influenza Activity: INDOPACOM (2020-2021 Season: Week 42)

Laboratory-Confirmed Influenza by Installation (All Beneficiaries)

Country	Location	Service	A (not sub-typed)		A (H1N1)		A (H3N2)		A & B		B		Total positive	Total tested	% Positive	Change from past 2 weeks
			2 wks	Season	2 wks	Season	2 wks	Season	2 wks	Season	2 wks	Season	2 wks	2 wks	2 wks	
Guam	JB Andersen	J	0	0	0	0	0	0	0	0	0	0	0	260	0	↔
Japan	CFA Okinawa	N	0	0	0	0	0	0	0	0	0	0	0	8	0	↔
Japan	CFA Yokosuka	N	0	0	0	0	0	0	0	0	0	0	0	19	0	↔
Japan	Camp Foster	N	0	0	0	0	0	0	0	0	0	0	0	3	0	↔
Japan	Camp Fuji	N	0	0	0	0	0	0	0	0	0	0	0	0	0	↔
Japan	Camp Zama	A	0	0	0	0	0	0	0	0	0	0	0	5	0	↔
Japan	Kadena AB	F	0	0	0	0	0	0	0	0	0	0	0	6	0	↔
Japan	MCAS Futenma	N	0	0	0	0	0	0	0	0	0	0	0	0	0	↔
Japan	MCAS Iwakuni	N	0	0	0	0	0	0	0	0	0	0	0	6	0	↔
Japan	Misawa AB	F	0	0	0	0	0	0	0	0	0	0	0	3	0	↔
Japan	NAF Atsugi	N	0	0	0	0	0	0	0	0	1	1	1	6	17	↓
Japan	NB Okinawa	N	0	0	0	0	0	0	1	1	0	0	1	13	8	↑
Japan	USFA Sasebo	N	0	0	0	0	0	0	0	0	0	0	0	17	0	↔
Japan	Yokota AB	F	0	0	0	0	0	0	0	0	0	0	0	40	0	↔
Korea, Republic of	CFA Chinhae	N	0	0	0	0	0	0	0	0	0	0	0	0	0	↔
Korea, Republic of	Camp Casey	A	0	0	0	0	0	0	0	0	0	0	0	0	0	↔
Korea, Republic of	Camp Humphreys	A	0	0	0	0	0	0	0	0	0	0	0	6	0	↔
Korea, Republic of	Camp Walker	A	0	0	0	0	0	0	0	0	0	0	0	0	0	↔
Korea, Republic of	Kunsan AB	F	0	0	0	0	0	0	0	0	0	0	0	0	0	↔
Korea, Republic of	Osan AB	F	0	0	0	0	0	0	0	0	0	0	0	4	0	↔
Korea, Republic of	Yongsan Garrison	A	0	0	0	0	0	0	0	0	0	0	0	24	0	↔
United States	Camp H M Smith	N	0	0	0	0	0	0	0	0	0	0	0	0	0	↔
United States	Ft Shafter	A	1	1	0	0	0	0	0	0	0	0	1	30	3	↓
United States	JB Pearl Harbor-Hickam	J	0	0	0	0	0	0	0	0	0	0	0	1	0	↔
United States	MCB Hawaii	N	0	0	0	0	0	0	0	0	0	0	0	4	0	↔
United States	Schofield Barracks	A	0	0	0	0	0	0	0	0	0	0	0	13	0	↔

COVID-19 Cases Since Week 41 by Installation (All Beneficiaries)

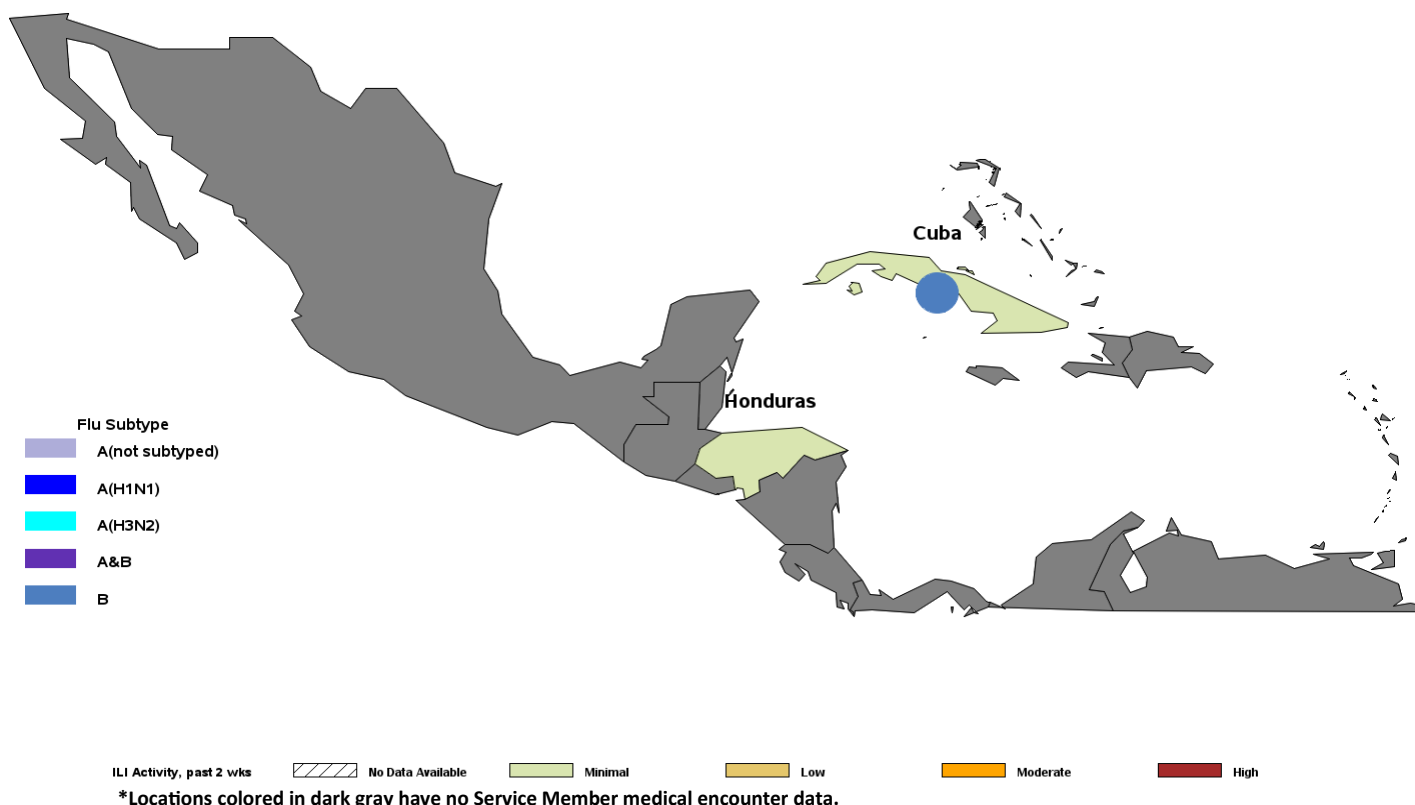
Country	Location	Service	COVID-19		Change from past 2 weeks
			2 wks	Season	
Guam	JB Andersen	J	29	29	↑
Japan	CFA Okinawa	N	0	0	↔
Japan	CFA Yokosuka	N	9	9	↑
Japan	Camp Foster	N	0	0	↔
Japan	Camp Fuji	N	1	1	↔
Japan	Camp Zama	A	0	0	↔
Japan	Kadena AB	F	1	1	↔
Japan	MCAS Futenma	N	0	0	↔
Japan	MCAS Iwakuni	N	1	1	↓
Japan	Misawa AB	F	0	0	↔
Japan	NAF Atsugi	N	2	2	↓
Japan	NB Okinawa	N	0	0	↔
Japan	USFA Sasebo	N	4	4	↔
Japan	Yokota AB	F	0	0	↔
Korea, Republic of	CFA Chinhae	N	0	0	↔
Korea, Republic of	Camp Casey	A	0	0	↔
Korea, Republic of	Camp Humphreys	A	1	1	↓
Korea, Republic of	Camp Walker	A	0	0	↔
Korea, Republic of	Kunsan AB	F	0	0	↔
Korea, Republic of	Osan AB	F	2	2	↓
Korea, Republic of	Yongsan Garrison	A	0	0	↔
United States	Camp H M Smith	N	0	0	↔
United States	Ft Shafter	A	15	15	↓
United States	JB Pearl Harbor-Hickam	J	12	12	↔
United States	MCB Hawaii	N	1	1	↔
United States	Schofield Barracks	A	11	11	↓

Influenza Activity: SOUTHCOM (2020-2021 Season: Week 42)

**** The COVID-19 outbreak and its associated mitigation efforts occurring across the world, as well as healthcare seeking behavior, may have impacted ILI activity levels.**

- ILI activity remained minimal in Cuba and Honduras.
- Only 1 laboratory-confirmed influenza case has been reported for SOUTHCOM for the 2020-2021 season (Influenza B).

ILI Activity (Service Members) and Laboratory-Confirmed Influenza (All Beneficiaries)



Laboratory-Confirmed Influenza by Installation (All Beneficiaries)

Country	Location	Service	A (not sub-typed)		A (H1N1)		A (H3N2)		A & B		B		Total posi-tive	Total tested	% Positive	Change from last report
			2 wks	Season	2 wks	Season	2 wks	Season	2 wks	Season	2 wks	Season	2 wks	2 wks	2 wks	
Cuba	Guantanamo Bay	N	0	0	0	0	0	0	0	0	1	1	1	7	14	↑

COVID-19 Cases Since Week 41 by Installation (All Beneficiaries)

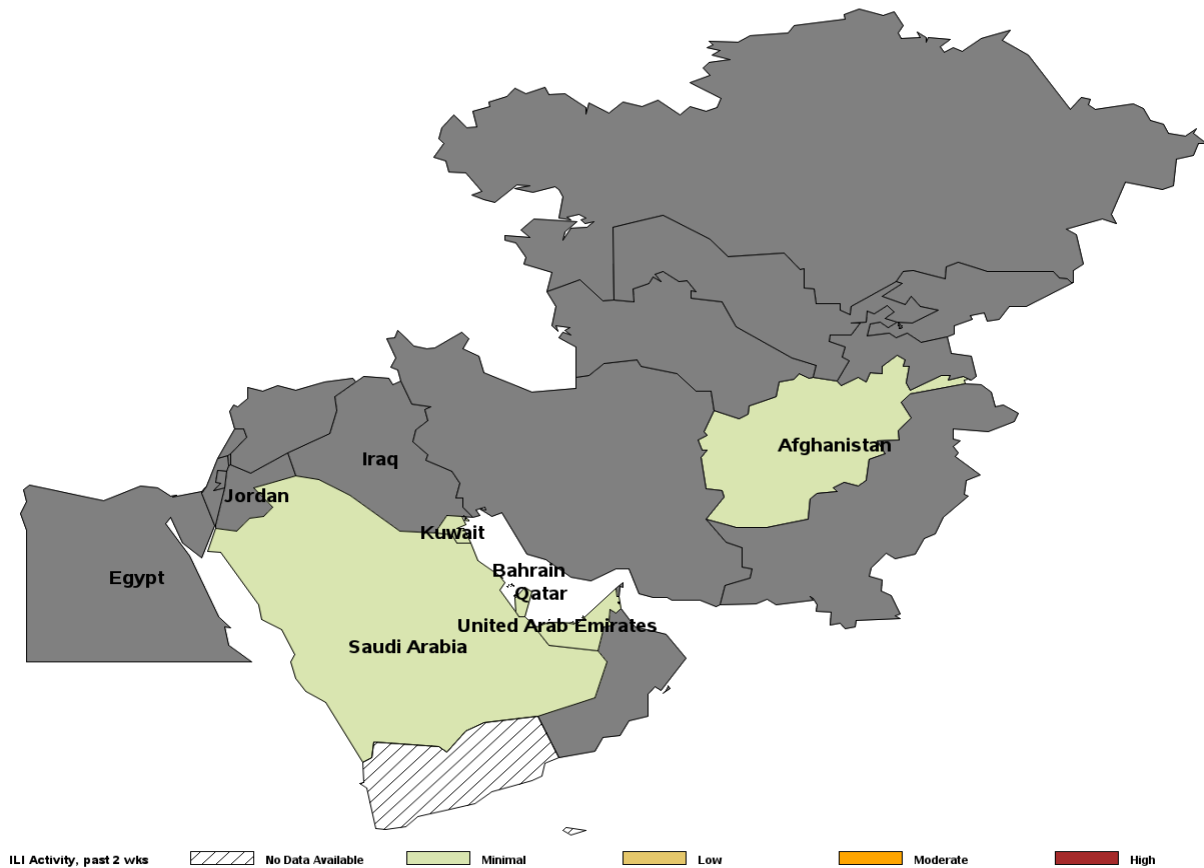
Country	Location	Service	COVID-19		Change from last report
			2 wks	Season	
Cuba	Guantanamo Bay	N	1	1	↔

Influenza Activity: CENTCOM (2020-2021 Season: Week 42)

**** The COVID-19 outbreak and its associated mitigation efforts occurring across the world, as well as healthcare seeking behavior, may have impacted ILI activity levels.**

- ILI activity was minimal in all countries with available data.

ILI Activity (Service Members)



*Locations colored in dark gray have no Service Member medical encounter data.

NORTHCOM Laboratory-Confirmed Influenza

(2020-2021 Season: Week 42)

Laboratory-Confirmed Influenza (All Beneficiaries) by Installation Alaska through Georgia

State	Location	Service	A (not subtyped)		A (H1N1)		A (H3N2)		A & B		B		Total positive	Total tested	% Positive	Change from past 2 weeks
			2 wks	Season	2 wks	Season	2 wks	Season	2 wks	Season	2 wks	Season	2 wks	2 wks	2 wks	
AK	Eielson AFB	F	0	0	0	0	0	0	0	0	0	0	0	3	0	↔
AK	Ft Greely	A	0	0	0	0	0	0	0	0	0	0	0	4	0	↔
AK	Ft Wainwright	A	0	0	0	0	0	0	0	0	0	0	0	24	0	↔
AK	JB Elmendorf-Richardson	J	0	0	0	0	0	0	0	0	0	0	0	24	0	↔
AL	Ft Rucker	A	0	0	0	0	0	0	0	0	0	0	0	34	0	↔
AL	Maxwell AFB	F	0	0	0	0	0	0	0	0	0	0	0	8	0	↔
AR	Little Rock AFB	F	0	0	0	0	0	0	0	0	0	0	0	11	0	↔
AZ	Ft Huachuca	A	1	1	0	0	0	0	0	0	1	1	2	34	6	↓
AZ	Luke AFB	F	0	0	0	0	0	0	0	0	0	0	0	2	0	↔
AZ	MCAS Yuma	N	0	0	0	0	0	0	0	0	0	0	0	8	0	↔
CA	Camp Pendleton	N	0	0	0	0	0	0	0	0	0	0	0	34	0	↔
CA	NB San Diego	N	0	0	0	0	0	0	0	0	0	0	0	51	0	↔
CO	Buckley AFB	F	0	0	0	0	0	0	0	0	1	1	1	9	11	↑
CO	Ft Carson	A	0	0	0	0	0	0	0	0	1	1	1	295	0	↓
CO	Peterson AFB	F	0	0	0	0	0	0	0	0	0	0	0	42	0	↔
CO	USAF Academy	F	0	0	0	0	0	0	0	0	0	0	0	56	0	↔
CT	NSB New London	N	0	0	0	0	0	0	0	0	0	0	0	2	0	↔
DC	Pentagon	J	0	0	0	0	0	0	0	0	0	0	0	10	0	↔
DC	Washington Navy Yard	N	0	0	0	0	0	0	0	0	0	0	0	1	0	↔
DE	Dover AFB	F	0	0	0	0	0	0	0	0	0	0	0	6	0	↔
FL	Eglin AFB	J	0	0	0	0	0	0	0	0	0	0	0	19	0	↔
FL	Hurlburt Field	F	0	0	0	0	0	0	1	1	0	0	1	14	7	↑
FL	MacDill AFB	F	0	0	0	0	0	0	0	0	1	1	1	57	2	↓
FL	NAS Jacksonville	J	2	2	0	0	0	0	0	0	1	1	3	51	6	↓
FL	NAS Key West	J	0	0	0	0	0	0	0	0	0	0	0	4	0	↔
FL	NAS Pensacola	N	0	0	0	0	0	0	0	0	0	0	0	171	0	↔
FL	NAS Whiting Field	N	0	0	0	0	0	0	0	0	0	0	0	1	0	↔
FL	NS Mayport	J	0	0	0	0	0	0	0	0	0	0	0	2	0	↔
FL	Patrick AFB	F	0	0	0	0	0	0	0	0	0	0	0	17	0	↔
FL	Tyndall AFB	F	0	0	0	0	0	0	0	0	0	0	0	5	0	↔
GA	Ft Benning	A	0	0	0	0	0	0	0	0	0	0	0	43	0	↔
GA	Ft Gordon	A	0	0	0	0	0	0	0	0	0	0	0	24	0	↔
GA	Ft Stewart	A	0	0	0	0	0	0	0	0	0	0	0	8	0	↔
GA	Hunter Army Airfield	A	0	0	0	0	0	0	0	0	0	0	0	1	0	↔
GA	NSB Kings Bay	J	0	0	0	0	0	0	0	0	0	0	0	4	0	↔

Disclaimer: Influenza lab data are not available from sites that have transitioned to MHS Genesis and encounter data may be delayed. Therefore, these sites are not included in the lab portion of this report and the accuracy of the activity levels may be impacted.

NORTHCOM COVID-19 Cases

(2020-2021 Season: Week 42)

COVID-19 Cases Since Week 41 (All Beneficiaries) by Installation Alaska through Georgia

State	Location	Service	COVID-19		Change from past 2 weeks
			2 wks	Season	
AK	Eielson AFB	F	19	19	↑
AK	Ft Wainwright	A	61	61	↓
AK	JB Elmendorf-Richardson	J	117	117	↑
AL	Ft Rucker	A	17	17	↑
AL	Maxwell AFB	F	23	23	↑
AL	Redstone Arsenal	A	2	2	↑
AR	Little Rock AFB	F	16	16	↑
AZ	Davis-Monthan AFB	F	7	7	↓
AZ	Ft Huachuca	A	14	14	↑
AZ	Luke AFB	F	18	18	↓
AZ	MCAS Yuma	N	3	3	↔
CA	Beale AFB	F	3	3	↔
CA	Camp Pendleton	N	59	59	↑
CA	Edwards AFB	F	2	2	↔
CA	Ft Irwin	A	7	7	↓
CA	Los Angeles AFB	F	1	1	↔
CA	MBHC Eastlake	N	4	4	↑
CA	NAH Lemoore	N	1	1	↓
CA	NB Coronado	N	3	3	↑
CA	NB San Diego	N	117	117	↓
CA	NV Ventura County	N	1	1	↔
CA	Travis AFB	F	33	33	↑
CA	Twentynine Palms	N	11	11	↑
CA	USAG Presidio of Monterey	A	1	1	↓
CA	Vandenberg AFB	F	10	10	↔
CO	Buckley AFB	F	18	18	↑

State	Location	Service	COVID-19		Change from past 2 weeks
			2 wks	Season	
CO	Ft Carson	A	195	195	↑
CO	Peterson AFB	F	19	19	↑
CO	Schriever AFB	F	3	3	↓
CO	USAF Academy	F	29	29	↑
CT	NSB New London	N	3	3	↓
DC	JB Anacostia-Bolling	F	2	2	↓
DC	JB Myer-Henderson Hall	A	5	5	↑
DC	Pentagon	J	11	11	↓
DC	Washington Navy Yard	N	3	3	↔
DE	Dover AFB	F	6	6	↑
FL	Eglin AFB	J	52	52	↑
FL	Hurlburt Field	F	28	28	↑
FL	Macdill AFB	F	36	36	↓
FL	NAS Jacksonville	J	83	83	↑
FL	NAS Pensacola	N	24	24	↓
FL	NS Mayport	J	46	46	↑
FL	Patrick AFB	F	7	7	↑
FL	Tyndall AFB	F	17	17	↑
GA	Ft Benning	A	75	75	↑
GA	Ft Gordon	A	71	71	↑
GA	Ft Stewart	A	51	51	↓
GA	Hunter Army Airfield	A	10	10	↓
GA	Moody AFB	F	13	13	↑
GA	NAS Albany	J	2	2	↑
GA	NSB Kings Bay	J	19	19	↑
GA	Robins AFB	F	19	19	↑

Disclaimer: Influenza lab data are not available from sites that have transitioned to MHS Genesis and encounter data may be delayed. Therefore, these sites are not included in the lab portion of this report and the accuracy of the activity levels may be impacted.

NORTHCOM Laboratory-Confirmed Influenza

(2020-2021 Season: Week 42)

Laboratory-Confirmed Influenza (All Beneficiaries) by Installation Illinois through New York

State	Location	Service	A (not subtyped)		A (H1N1)		A (H3N2)		A & B		B		Total positive	Total tested	% Positive	Change from
			2 wks	Season	2 wks	Season	2 wks	Season	2 wks	Season	2 wks	Season	2 wks	2 wks	2 wks	past 2 weeks
IL	NS Great Lakes	N	0	0	0	0	0	0	0	0	0	0	0	70	0	↔
IL	Scott AFB	F	0	0	0	0	0	0	0	0	0	0	0	22	0	↔
KS	Ft Leavenworth	A	0	0	0	0	0	0	0	0	0	0	0	8	0	↔
KS	Ft Riley	A	0	0	0	0	0	0	0	0	0	0	0	34	0	↔
KS	McConnell AFB	F	0	0	0	0	0	0	0	0	0	0	0	2	0	↔
KY	Ft Campbell	A	0	0	0	0	0	0	0	0	0	0	0	68	0	↔
KY	Ft Knox	A	0	0	0	0	0	0	0	0	0	0	0	15	0	↔
LA	Barksdale AFB	F	0	0	0	0	0	0	0	0	0	0	0	7	0	↔
LA	Ft Polk	A	3	3	0	0	0	0	0	0	0	0	3	84	4	↑
MA	Hanscom AFB	F	0	0	0	0	0	0	0	0	0	0	0	1	0	↔
MD	Aberdeen Proving Ground	A	0	0	0	0	0	0	0	0	0	0	0	34	0	↔
MD	Ft Meade	A	0	0	0	0	0	0	0	0	0	0	0	1	0	↔
MD	JB Andrews	F	0	0	0	0	0	0	0	0	0	0	0	25	0	↔
MD	NAS Patuxent River	N	6	6	0	0	0	0	0	0	0	0	6	16	38	↑
MD	NBHC Bancroft Hall	N	0	0	0	0	0	0	0	0	0	0	0	19	0	↔
MD	NHC Annapolis	N	0	0	0	0	0	0	0	0	0	0	0	21	0	↔
MD	NSF Indian Head	N	3	3	0	0	0	0	0	0	0	0	3	18	17	↓
MD	WRNMMC	J	0	0	0	0	0	0	0	0	0	0	0	65	0	↔
MO	Ft Leonard Wood	A	2	2	0	0	0	0	0	0	0	0	2	58	3	↓
MO	Whiteman AFB	F	0	0	0	0	0	0	0	0	0	0	0	26	0	↔
MS	Columbus AFB	F	0	0	0	0	0	0	0	0	0	0	0	2	0	↔
MS	Keesler AFB	J	0	0	0	0	0	0	0	0	0	0	0	49	0	↔
MS	NAS Meridian	N	0	0	0	0	0	0	0	0	0	0	0	1	0	↔
MS	NBHC Gulfport	N	0	0	0	0	0	0	0	0	0	0	0	5	0	↔
NC	Camp Lejeune	N	25	25	0	0	0	0	0	0	0	0	25	217	12	↓
NC	Ft Bragg	J	0	0	0	0	0	0	0	0	0	0	0	23	0	↔
NC	MCAS Cherry Point	N	0	0	0	0	0	0	0	0	1	1	1	14	7	↑
NC	Pope Army Airfield	J	0	0	0	0	0	0	0	0	0	0	0	4	0	↔
NC	Seymour Johnson AFB	J	0	0	0	0	0	0	0	0	1	1	1	46	2	↓
ND	Grand Forks AFB	F	0	0	0	0	0	0	0	0	0	0	0	2	0	↔
ND	Minot AFB	F	0	0	0	0	0	0	0	0	0	0	0	1	0	↔
NE	Offutt AFB	F	0	0	0	0	0	0	0	0	0	0	0	7	0	↔
NH	Portsmouth	N	0	0	0	0	0	0	0	0	0	0	0	3	0	↔
NJ	JB McGuire-Dix-Lakehurst	F	0	0	0	0	0	0	0	0	0	0	0	257	0	↔
NM	Holloman AFB	F	0	0	0	0	0	0	0	0	0	0	0	6	0	↔
NM	Kirtland AFB	F	0	0	0	0	0	0	0	0	0	0	0	80	0	↔
NY	Ft Drum	A	0	0	0	0	0	0	0	0	0	0	0	24	0	↔
NY	West Point	A	0	0	0	0	0	0	0	0	0	0	0	10	0	↔

Disclaimer: Influenza lab data are not available from sites that have transitioned to MHS Genesis and encounter data may be delayed. Therefore, these sites are not included in the lab portion of this report and the accuracy of the activity levels may be impacted.

NORTHCOM COVID-19 Cases

(2020-2021 Season: Week 42)

COVID-19 Cases Since Week 41 (All Beneficiaries) by Installation Illinois through New York

State	Location	Service	COVID-19		Change from past 2 weeks
			2 wks	Season	
ID	Mountain Home AFB	F	7	7	↓
IL	NS Great Lakes	N	155	155	↑
IL	Scott AFB	F	37	37	↑
KS	Ft Leavenworth	A	30	30	↑
KS	Ft Riley	A	26	26	↓
KS	McConnell AFB	F	10	10	↑
KY	Ft Campbell	A	203	203	↑
KY	Ft Knox	A	28	28	↑
LA	Barksdale AFB	F	37	37	↑
LA	Ft Polk	A	17	17	↓
MA	Hanscom AFB	F	7	7	↑
MD	Aberdeen Proving Ground	A	2	2	↓
MD	Ft Detrick	A	2	2	↔
MD	Ft Meade	A	19	19	↓
MD	JB Andrews	F	20	20	↑
MD	NAS Patuxent River	N	7	7	↑
MD	NBHC Bancroft Hall	N	3	3	↑
MD	NHC Annapolis	N	4	4	↑
MD	WRNMMC	J	43	43	↓
MO	Ft Leonard Wood	A	217	217	↓
MO	Whiteman AFB	F	45	45	↓
MS	Columbus AFB	F	5	5	↔
MS	Keesler AFB	J	75	75	↑
MS	NBHC Gulfport	N	2	2	↔
MT	Malmstrom AFB	F	40	40	↑
NC	Camp Lejeune	N	284	284	↑
NC	Ft Bragg	J	334	334	↑
NC	MCAS Cherry Point	N	19	19	↓
NC	Pope Army Airfield	J	8	8	↑
NC	Seymour Johnson AFB	J	25	25	↑
ND	Grand Forks AFB	F	27	27	↑
ND	Minot AFB	F	47	47	↓
NE	Offutt AFB	F	47	47	↓
NJ	JB McGuire-Dix-Lakehurst	F	23	23	↓
NM	Cannon AFB	F	19	19	↓
NM	Holloman AFB	F	18	18	↑
NM	Kirtland AFB	F	9	9	↑
NM	White Sands Missile Range	A	1	1	↔
NV	Nellis AFB	F	66	66	↑
NY	Ft Drum	A	6	6	↑
NY	West Point	A	4	4	↓

Disclaimer: Influenza lab data are not available from sites that have transitioned to MHS Genesis and encounter data may be delayed. Therefore, these sites are not included in the lab portion of this report and the accuracy of the activity levels may be impacted.

NORTHCOM Laboratory-Confirmed Influenza

(2020-2021 Season: Week 42)

Laboratory-Confirmed Influenza (All Beneficiaries) by Installation Ohio through Wyoming

State	Location	Service	A (not subtyped)		A (H1N1)		A (H3N2)		A & B		B		Total positive	Total tested	% Positive	Change from past 2 weeks
			2 wks	Season	2 wks	Season	2 wks	Season	2 wks	Season	2 wks	Season	2 wks	2 wks	2 wks	
OH	Wright-Patterson AFB	F	0	0	0	0	0	0	2	2	0	0	2	82	2	↑
OK	Altus AFB	F	0	0	0	0	0	0	0	0	0	0	0	5	0	↔
OK	Ft Sill	A	0	0	0	0	0	0	0	0	0	0	0	27	0	↔
OK	Tinker AFB	F	0	0	0	0	0	0	0	0	0	0	0	6	0	↔
OK	Vance AFB	F	0	0	0	0	0	0	0	0	1	1	1	12	8	↑
PA	Carlisle Barracks	A	0	0	0	0	0	0	0	0	0	0	0	4	0	↔
PR	Ft Buchanan	A	0	0	0	0	0	0	0	0	0	0	0	3	0	↔
RI	NHC New England	N	0	0	0	0	0	0	0	0	0	0	0	3	0	↔
SC	Ft Jackson	A	0	0	0	0	0	0	0	0	0	0	0	19	0	↔
SC	JB Charleston	J	0	0	0	0	0	0	0	0	3	3	3	44	7	↓
SC	MCAS Beaufort	N	0	0	0	0	0	0	0	0	0	0	0	21	0	↔
SC	Parris Island	N	0	0	0	0	0	0	0	0	1	1	1	42	2	↓
SC	Shaw AFB	F	0	0	0	0	0	0	0	0	0	0	0	17	0	↔
SD	Ellsworth AFB	F	0	0	0	0	0	0	0	0	0	0	0	62	0	↔
TN	NSA Mid-South	N	0	0	0	0	0	0	0	0	0	0	0	1	0	↔
TX	Dyess AFB	F	0	0	0	0	0	0	0	0	0	0	0	5	0	↔
TX	Ft Bliss	A	0	0	0	0	0	0	1	1	0	0	1	77	1	↑
TX	Ft Hood	A	0	0	0	0	0	0	0	0	0	0	0	118	0	↔
TX	Goodfellow AFB	F	0	0	0	0	0	0	0	0	0	0	0	13	0	↔
TX	JB San Antonio	J	1	1	0	0	0	0	0	0	0	0	1	132	1	↑
TX	Laughlin AFB	F	0	0	0	0	0	0	0	0	0	0	0	7	0	↔
TX	NAS Corpus Christi	N	0	0	0	0	0	0	0	0	0	0	0	4	0	↔
TX	Sheppard AFB	F	0	0	0	0	0	0	0	0	0	0	0	3	0	↔
VA	Ft Belvoir	J	0	0	0	0	0	0	0	0	0	0	0	45	0	↔
VA	Ft Lee	A	0	0	0	0	0	0	0	0	0	0	0	1	0	↔
VA	JB Langley-Eustis	J	2	2	0	0	0	0	2	2	1	1	5	113	4	↑
VA	MCB Quantico	N	0	0	0	0	0	0	0	0	0	0	0	11	0	↔
VA	NS Norfolk	N	0	0	0	0	0	0	0	0	0	0	0	1	0	↔
VA	NWS Dahlgren	N	0	0	0	0	0	0	0	0	0	0	0	8	0	↔
VA	NWS Yorktown	N	0	0	0	0	0	0	0	0	0	0	0	1	0	↔
VA	Portsmouth	N	0	0	0	0	0	0	1	1	0	0	1	8	13	↓
WY	FE Warren AFB	F	0	0	0	0	0	0	0	0	0	0	0	1	0	↔

Disclaimer: Influenza lab data are not available from sites that have transitioned to MHS Genesis and encounter data may be delayed. Therefore, these sites are not included in the lab portion of this report and the accuracy of the activity levels may be impacted.

NORTHCOM COVID-19 Cases

(2020-2021 Season: Week 42)

COVID-19 Cases Since Week 41 (All Beneficiaries) by Installation Ohio through Wyoming

State	Location	Service	COVID-19		Change from past 2 weeks
			2 wks	Season	
OH	Wright-Patterson AFB	F	90	90	↑
OK	Altus AFB	F	2	2	↑
OK	Ft Sill	A	102	102	↓
OK	Tinker AFB	F	30	30	↓
OK	Vance AFB	F	12	12	↑
PA	Carlisle Barracks	A	10	10	↑
PR	Ft Buchanan	A	6	6	↓
RI	NHC New England	N	4	4	↑
SC	Ft Jackson	A	107	107	↑
SC	JB Charleston	J	21	21	↑
SC	MCAS Beaufort	N	10	10	↓
SC	Parris Island	N	28	28	↑
SC	Shaw AFB	F	16	16	↑
SD	Ellsworth AFB	F	9	9	↓
TN	NSA Mid-South	N	2	2	↔
TX	Dyess AFB	F	44	44	↑
TX	Ft Bliss	A	426	426	↑
TX	Ft Hood	A	255	255	↓
TX	Goodfellow AFB	F	11	11	↓
TX	JB San Antonio	J	192	192	↑
TX	Laughlin AFB	F	4	4	↓
TX	NAS Corpus Christi	N	5	5	↑
TX	NAS JRB Fort Worth	N	3	3	↔
TX	Sheppard AFB	F	23	23	↑
UT	Hill AFB	F	20	20	↓
VA	Ft Belvoir	J	67	67	↑
VA	Ft Lee	A	22	22	↓
VA	JB Langley-Eustis	J	39	39	↑
VA	JB Myer-Henderson Hall	A	7	7	↓
VA	MCB Quantico	N	9	9	↑
VA	NAS Oceana	N	4	4	↑
VA	NS Norfolk	N	18	18	↑
VA	Portsmouth	N	171	171	↑
WY	FE Warren AFB	F	60	60	↑

Disclaimer: Influenza lab data are not available from sites that have transitioned to MHS Genesis and encounter data may be delayed. Therefore, these sites are not included in the lab portion of this report and the accuracy of the activity levels may be impacted.

Surveillance Programs and Data Sources

Defense Health Agency / Armed Forces Health Surveillance Branch (AFHSB):

The Armed Forces Health Surveillance Branch (AFHSB) is the central epidemiologic resource for the U.S. Armed Forces, conducting medical surveillance to protect those who serve our nation in uniform and allies who are critical to our national security interests. The Epidemiology and Analysis Section of AFHSB, the Epi Data Center of the Navy and Marine Corps Public Health Center, and the Air Force Satellite Office in Dayton, Ohio (Wright-Patterson AFB) have compiled data for this report from the following sources below.

Influenza-like Illness Activity:

Medical encounter and demographic data from the AFHSB's Defense Medical Surveillance System (DMSS) are used to generate portions of this report. ICD-10 codes from outpatient encounters are used to identify influenza-like illness (ILI). ILI is defined using the following codes: B97.89, H66.9, H66.90, H66.91, H66.92, H66.93, J00, J01.9, J01.90, J06.9, J09, J09.X, J09.X1, J09.X2, J09.X3, J09.X9, J10, J10.0, J10.00, J10.01, J10.08, J10.1, J10.2, J10.8, J10.81, J10.82, J10.83, J10.89, J11, J11.0, J11.00, J11.08, J11.1, J11.2, J11.8, J11.81, J11.82, J11.83, J11.89, J12.89, J12.9, J18, J18.1, J18.8, J18.9, J20.9, J40, R05, R50.9.

The percentage of all outpatient visits that have an ILI code is calculated each week for all service members, regardless of component. These data are presented weekly for the current season and compared to the four prior seasons among service members. Influenza activity levels are calculated by comparing the mean reported percent of visits due to ILI for the previous two weeks to the mean reported percent of visits due to ILI during baseline weeks (defined as non-influenza weeks (weeks 22-39) over the past 3 years). There are four influenza activity levels, minimal, low, moderate, and high. The activity level corresponds to the number of standard deviations (SD) below, at or above the mean for the current 2 week period compared to the mean of the baseline weeks. Minimal activity corresponds to an influenza percentage that is less than 2 SD above the mean. Low activity corresponds to an influenza percentage that is equal to or greater than 2 SD above the mean, but less than 4 SD above the mean. Moderate activity corresponds to an influenza percentage that is equal to or greater than 4 SD above the mean, but less than 6 SD above the mean. High activity corresponds to an influenza percentage that is equal to or greater than 6 SD above the mean.

Influenza activity levels are presented in the Combatant Command (CCMD) maps, either by Installation, state, or country.

Influenza Positive Specimens:

Influenza lab results (HL-7 formatted data) are compiled and transmitted from the Navy and Marine Corps Public Health Center to AFHSB. Results obtained via PCR, viral culture, and rapid influenza assays are reported. Although the inclusion of rapid tests may underestimate the weekly and cumulative percent positive estimates due to false negatives, visibility of the positive rapid results provides valuable information for this surveillance report. Influenza types/subtypes are categorized as influenza A/not subtyped, influenza A(H1N1), influenza A(H3N2), influenza A and B co-infection, and influenza B. Additionally, laboratory-confirmed positive results are used to identify influenza-related hospitalization cases across the DoD.

The percent positivity is calculated by dividing the number of influenza positive specimens by the total number of specimens (positive and negative only; inconclusive results are excluded). The distributions of percent positive specimens by subtype are presented on a weekly basis for the entire influenza season. For each CCMD state, the distribution of subtypes for the previous 2 weeks are presented as pie graphs for states and countries. For installations, data are presented in tables with counts and percent positive by subtype for the past 2 weeks and for the entire season. The "change from last report" column reports the absolute difference in the percent positive from the prior week's report to the current week's report.

Surveillance Programs and Data Sources

COVID-19 Cases:

COVID-19 case data are compiled from the COVID-19 positive lab results (HL-7 formatted data) and cases reported in the DRSi. COVID-19 cases in this report only include cases that have occurred since Week 41 of the influenza season, with the exception of the figure on page 1, which includes COVID-19 cases back to Week 1. The percent positivity calculation is restricted to only COVID-19 cases reported through the lab data so that an accurate denominator can be obtained. The percent positivity is calculated by dividing the number of COVID-19 positive specimens by the total number of specimens tested for COVID-19. For installations, COVID-19 case data are presented in tables with case counts for the past 2 weeks and for the entire influenza season (Week 41 to current). The “change from last report” column reports the absolute difference in the number of COVID-19 case counts from the prior week’s report to the current week’s report.

Pharmacy Transactions for Dispensed Influenza Antiviral Prescriptions:

HL7-formatted pharmacy transactions are used to assess the number of dispensed influenza antiviral (AV) prescriptions. Four influenza AV medications approved by the Food and Drug Administration (FDA) are recommended by the CDC for use in the United States (US) for the 2019-2020 influenza season: oral oseltamivir (Tamiflu® or generic), inhaled zanamivir (Relenza®), and intravenous peramivir (Rapivab®), and baloxavir marboxil (Xofluza®). These prescriptions are included in this surveillance. The overall count of dispensed AV prescriptions by week is presented graphically for the influenza season. A seasonal baseline is displayed with dispensed AV prescriptions. Surveillance thresholds are displayed with the count of inpatient dispensed AV prescriptions. Additionally, counts of inpatient dispensed influenza AV prescriptions are presented weekly for the influenza season.

Influenza Baselines, Thresholds, and Trends:

Weekly baselines used a three-year average to compare results with those from the same week during the previous three seasons. Bands for one and two standard deviations above seasonal baseline estimates are displayed to indicate when trends diverge with respect to timing or volume from those of recent seasons. The ILI, lab, and dispensed AV prescription data thresholds are calculated by adding two standard deviations to the off-season average.

Inpatient thresholds (lab and dispensed AV prescription data) are calculated by adding one standard deviation to the overall weighted average for in-season weeks. Weeks that represent at least 2% of the total season’s laboratory-positive influenza cases for at least two consecutive weeks was considered to be “in-season” or influenza weeks; all other weeks are considered to be “off-season” or non-influenza weeks.

Links to Service-Specific Influenza Reports:

Select the following links to see service-specific influenza surveillance weekly reports:

- Navy and Marine Corps Public Health Center (NMCPHC):
<https://www.med.navy.mil/sites/nmcphc/epi-data-center/influenza/Pages/default.aspx>
- United States Air Force School of Aerospace Medicine (USAFSAM)/Defense Health Agency (DHA):
<https://hpws.af.mil/epi-consult/influenza/ActivityUpdates.cfm>