

# DoD Consolidated Influenza Surveillance Report

Week 15 (10 Apr 2022 — 16 Apr 2022)



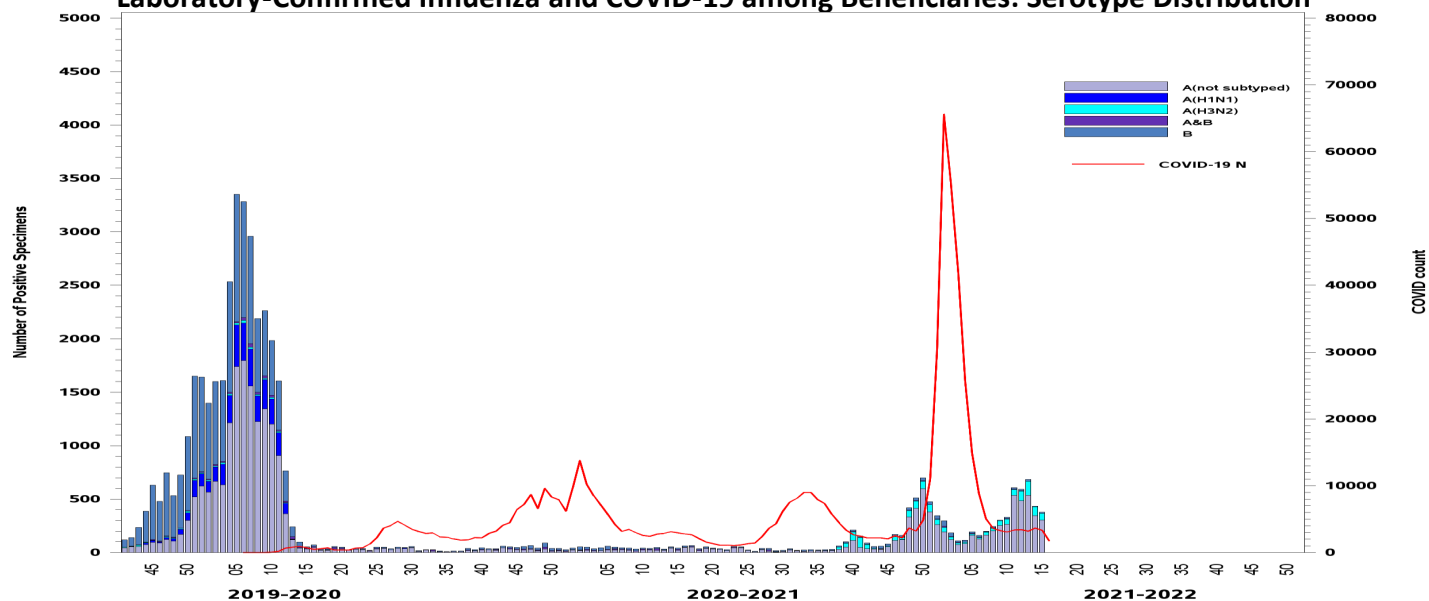
## One Page Summary: Weekly Highlights

- Laboratory-confirmed influenza cases, dispensed antiviral prescription counts, and inpatient counts among all beneficiaries were low during week 15 of the 2021-2022 influenza season.
- Among active component Service Members, laboratory-confirmed influenza cases and antiviral prescriptions were low.
- The majority of US states and installations had minimal to low activity.
- COVID-19 cases continue to account for a majority of all influenza and COVID-19 cases combined.
- One laboratory-confirmed influenza hospitalization was reported during week 15. (Season total: 41).

## Influenza Surveillance Indicators (2021-2022 season)

All Beneficiaries	Total Per Week		Trend	Activity Level
Laboratory Cases	378		▼	Low
Dispensed Antivirals	162		▲	Low
Severity			Activity Level	
Inpatient Laboratory Cases	1		◀▶	Low
Inpatient Dispensed Antivirals	2		◀▶	Low
Active Component			Activity Level	
Laboratory Cases	155		▼	Low
Dispensed Antivirals	53		▲	Low
ILI Outpatient Visits	1%		◀▶	Minimal

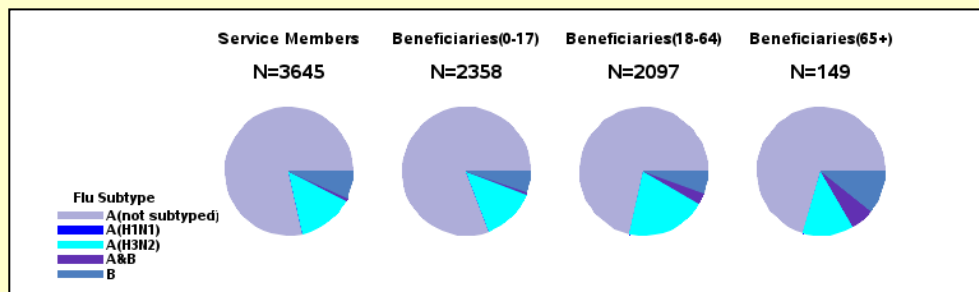
## Laboratory-Confirmed Influenza and COVID-19 among Beneficiaries: Serotype Distribution



# Confirmed Influenza and COVID-19 Cases (2021-2022 Season: Week 15)

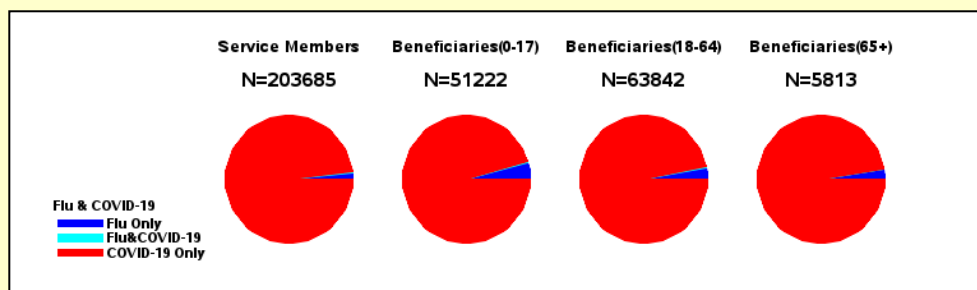
## Number and Distribution of Influenza Positive Specimens since week 40, by Beneficiary Status and Serotype

- The number of laboratory-confirmed influenza positive specimens for the season is low.
- Among subtyped specimens, influenza A (H3N2) and influenza B have predominated.

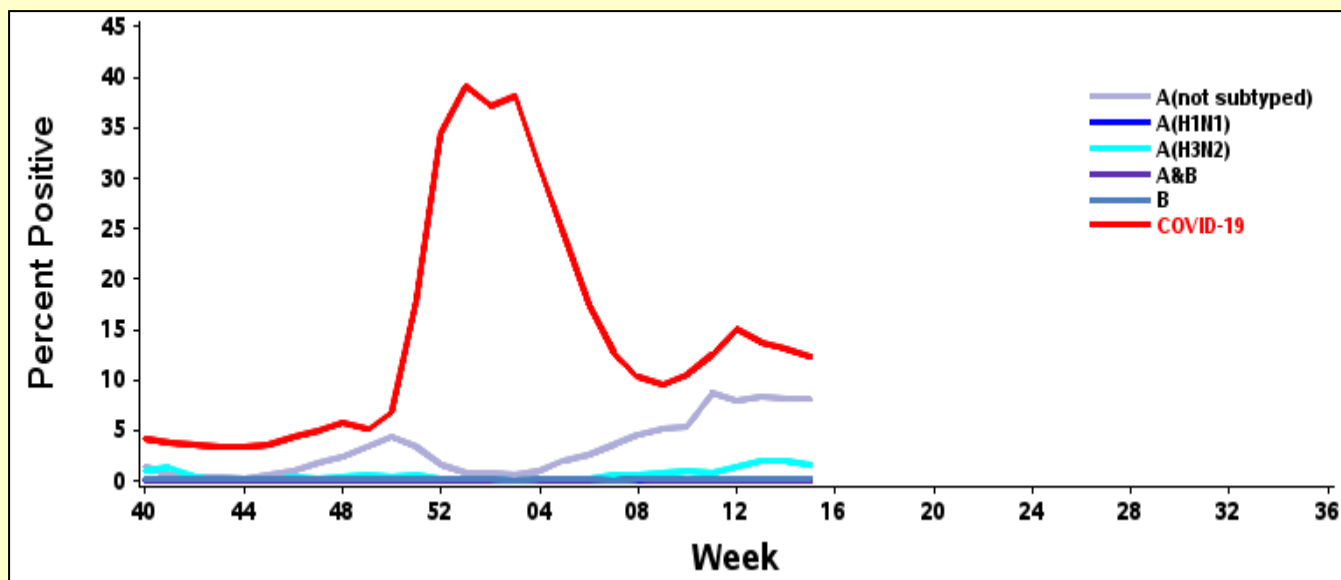


## Number and Distribution of Influenza Positive Specimens and COVID-19 Cases since week 40, by Beneficiary Status

- COVID-19 cases predominated among all beneficiary categories, representing a majority of influenza and COVID-19 cases combined.



## Percent of Specimens Positive for Influenza (by Serotype) or COVID-19

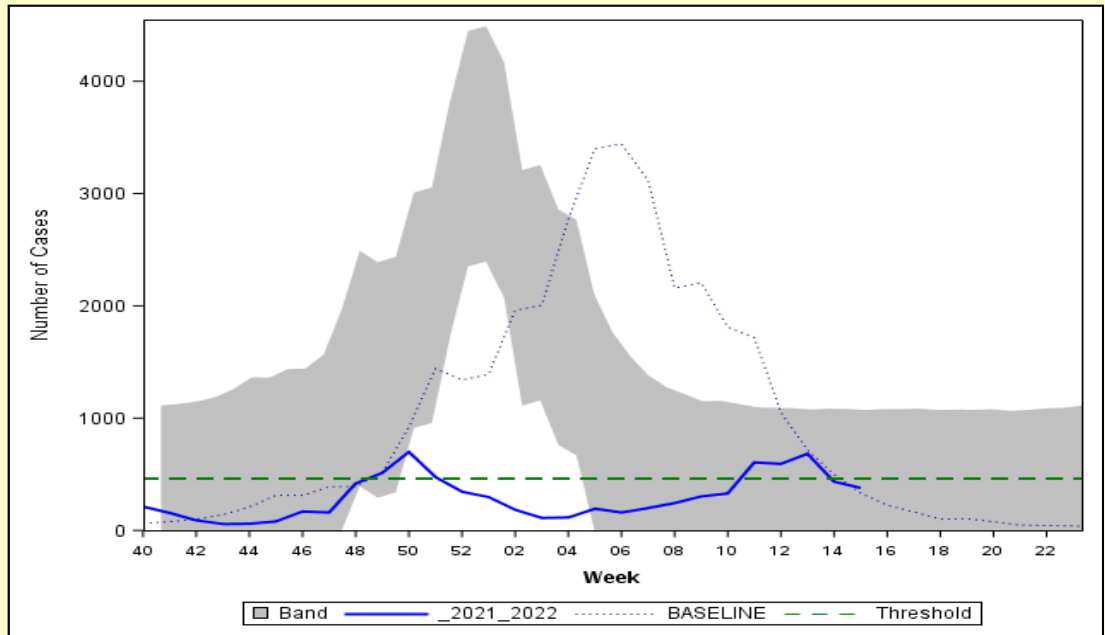


- The percent of specimens positive for influenza A (not subtyped) remained stable and higher than other subtypes during week 15. The percent of specimens positive for SARS-CoV-2 decreased slightly.

# Laboratory-Confirmed Influenza (2021-2022 Season: Week 15)

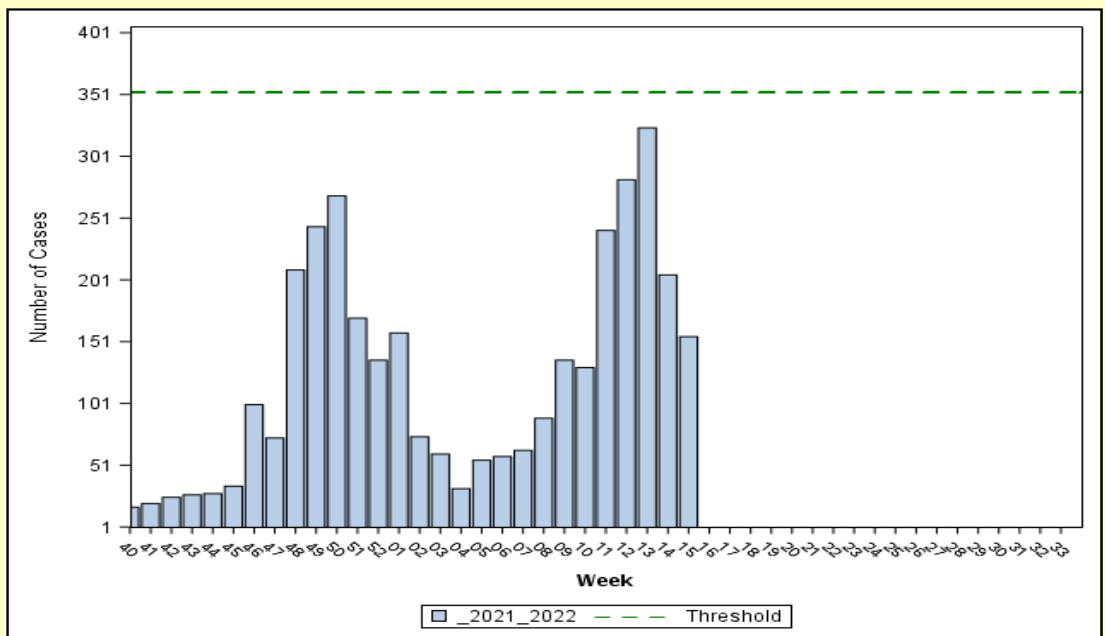
## Laboratory-Positive Influenza Cases, All Beneficiaries

- The number of laboratory-confirmed influenza cases among all beneficiaries was between the threshold and baseline for week 15.
- Band indicates one standard deviation above and below seasonal baseline estimates. Threshold indicates two standard deviations above off-season average.



## Laboratory-Positive Influenza Cases, Active Component Service

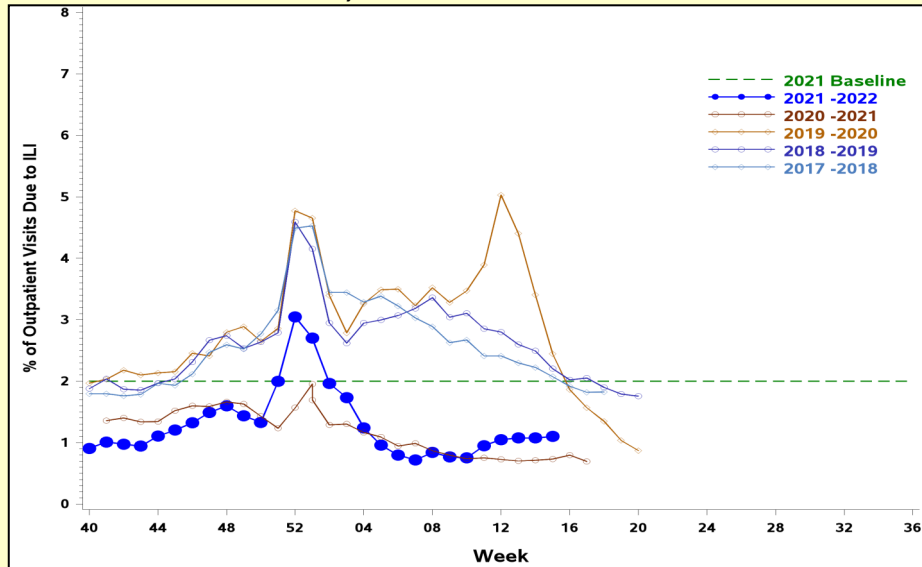
- The number of active component Service Member laboratory-confirmed influenza remained low and well below the threshold.
- Threshold indicates two standard deviations above seasonal baseline estimates.



# ILI and Dispensed Antiviral Prescriptions (2021-2022 Season: Week 15)

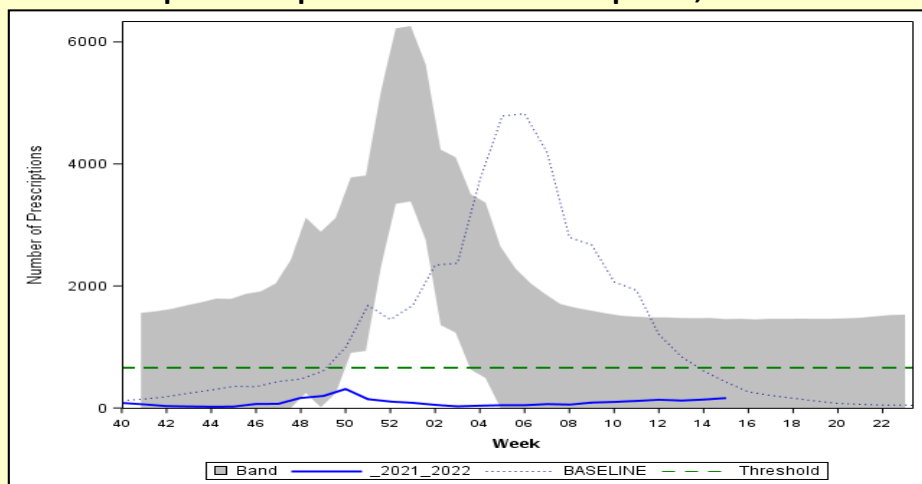
- The percentage of outpatient visits due to ILI was below the baseline for the 2021-2022 season.
- COVID-19 mitigation efforts are likely contributing to the lower than normal number of ILIs.

**Percent of Outpatient Visits Due to ILI:  
Service Members, 2017-2018 to 2021-2022 Seasons**



- Influenza-specific dispensed antiviral prescriptions among all beneficiaries remained low and below the weekly baseline and threshold.
- Band indicates one standard deviation above and below seasonal baseline estimates. Threshold indicates two standard deviations above off-season average.

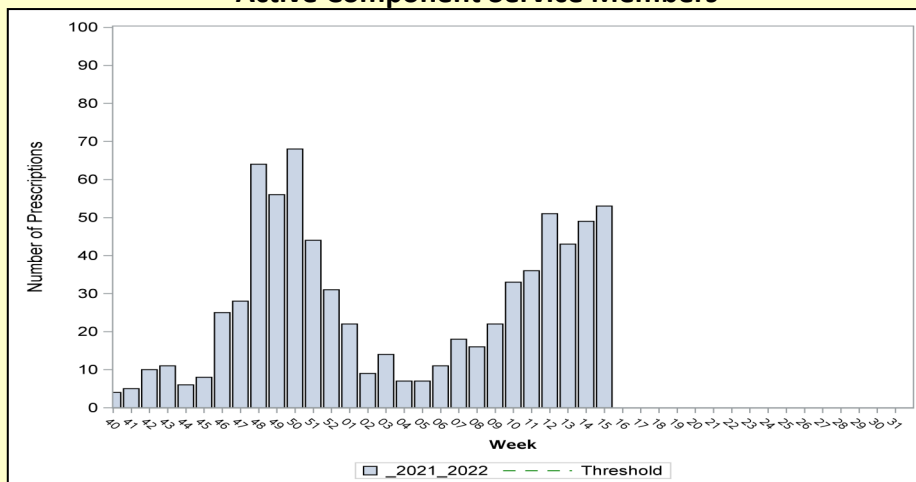
**Influenza-Specific Dispensed Antiviral Prescriptions, All Beneficiaries**



**Influenza-Specific Dispensed Antiviral Prescriptions:**

**Active Component Service Members**

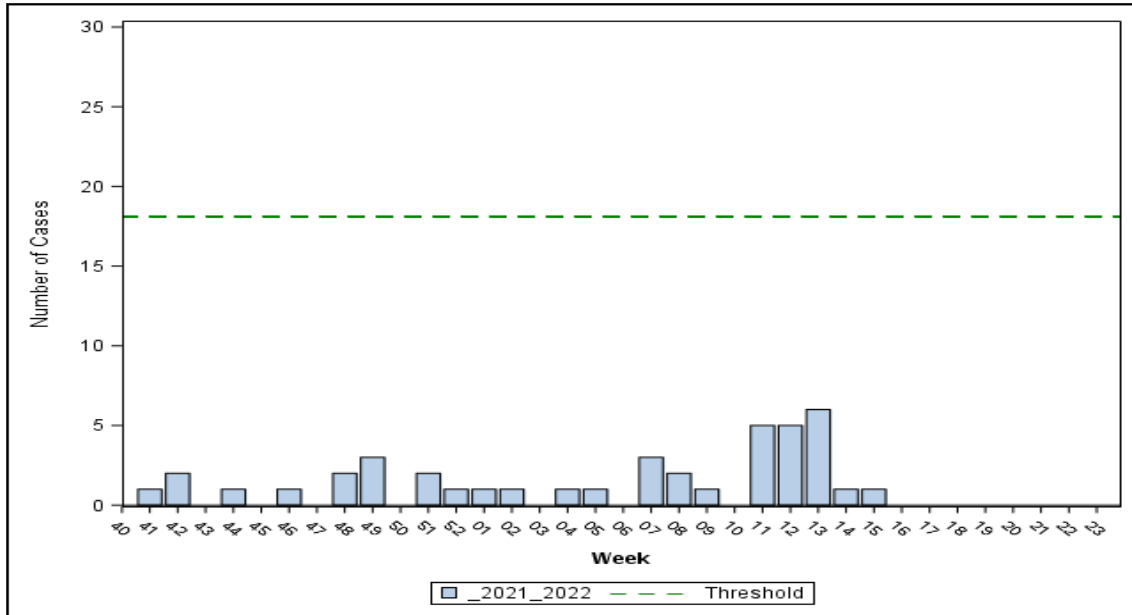
- The number of influenza-specific dispensed antiviral prescriptions among active component Service Members remained low.
- Threshold indicates two standard deviation above the overall weighted average during the season. However, there is not enough data for the season to calculate the threshold for this metric.



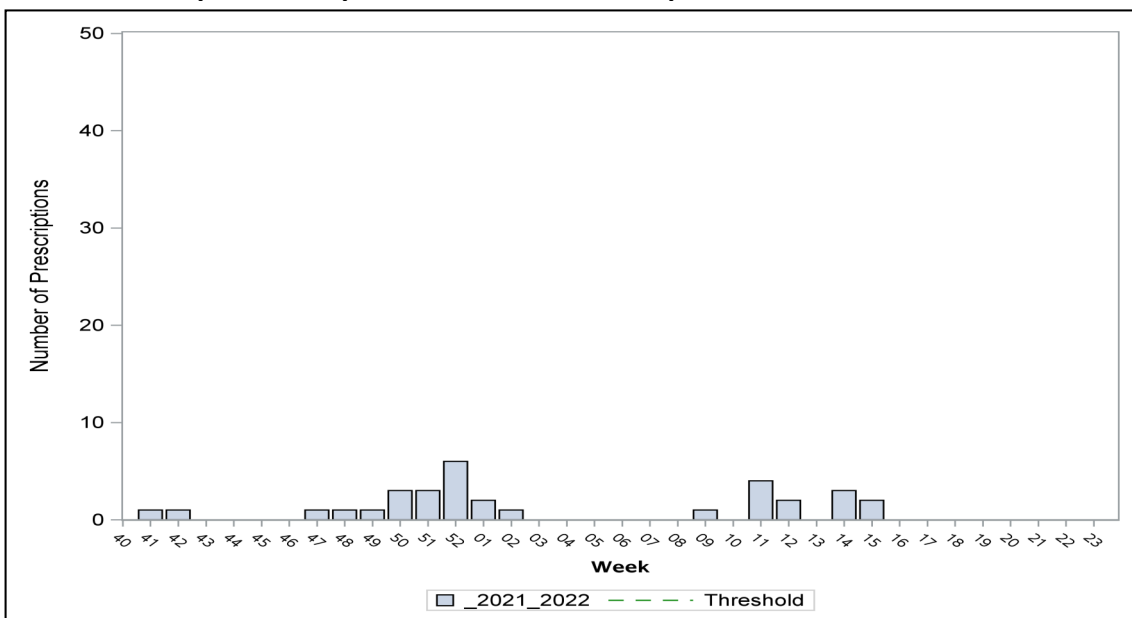
## Severity: Hospitalized Influenza Metrics (2021-2022 Season: Week 15)

- One laboratory-confirmed influenza hospitalization was reported during week 15 (influenza A -H3N2). Ten additional hospitalizations were reported for previous weeks. (Season total: 41; 14 service members and 27 other beneficiaries).
- There were minimal inpatient influenza-specific antiviral prescriptions dispensed during week 15.
- Thresholds indicate one standard deviation above the overall weighted average during the season. However, there is not enough data for the season to calculate the threshold for the influenza-specific antiviral prescriptions metric.

### Hospitalized Laboratory-Positive Influenza Cases, All Beneficiaries



### Inpatient Dispensed Antivirals Prescriptions, All Beneficiaries



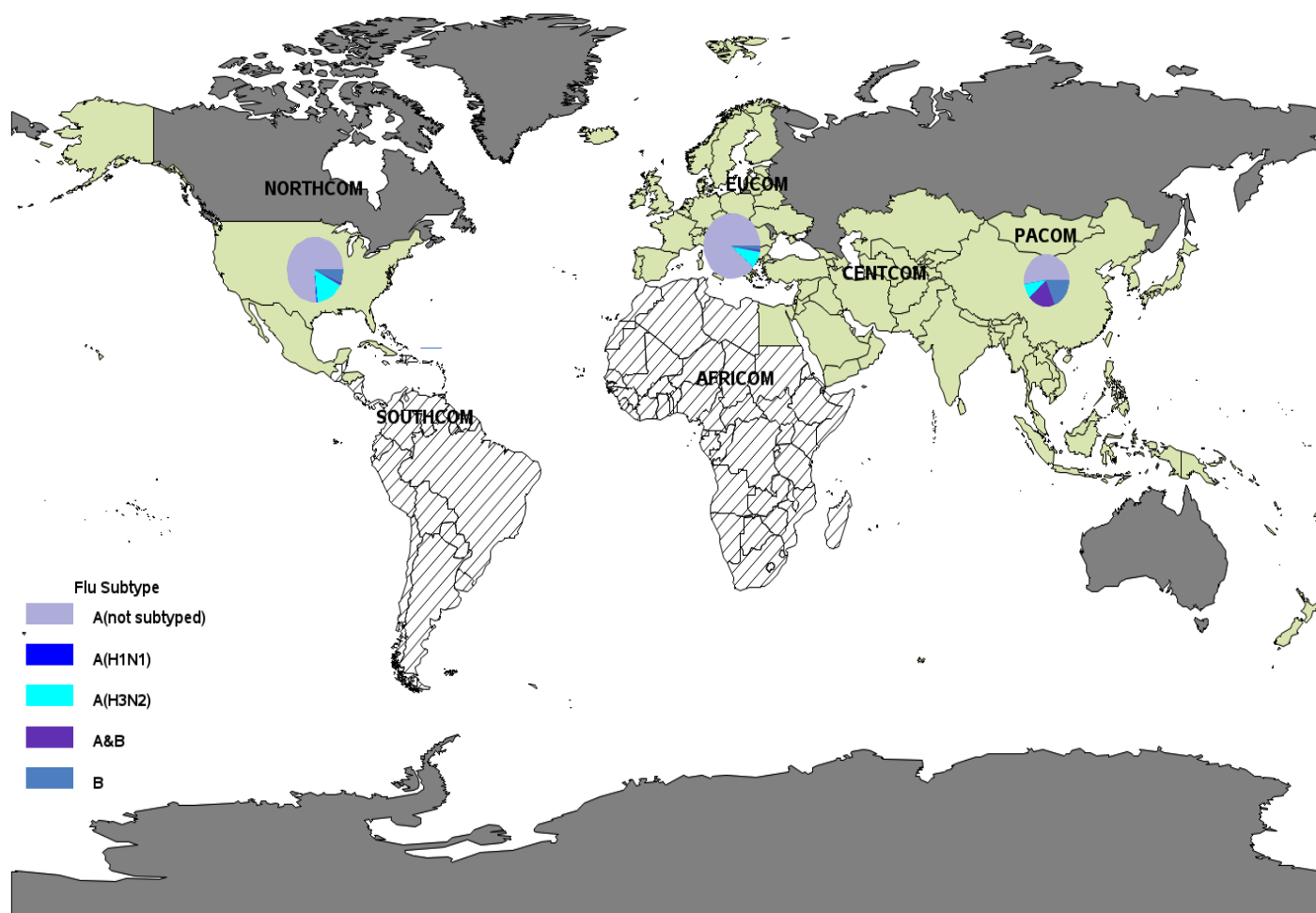
# Influenza Activity: Geographic Combatant Command

(2021-2022 Season: Week 15)

**\*\* The COVID-19 mitigation efforts occurring across the world may impact ILI activity levels.**

- NORTHCOM: ILI activity was minimal. The majority of laboratory-confirmed influenza cases have been Influenza A (not sub-typed).
- EUCOM: ILI activity was minimal. The majority of laboratory-confirmed influenza cases have been Influenza A (not subtyped).
- INDOPACOM: ILI activity was minimal. Influenza A (not subtyped) predominated among the few laboratory-confirmed influenza positive specimens that were reported.
- SOUTHCOM: ILI activity was minimal. No specimens have tested positive for influenza this season.
- CENTCOM: ILI activity was minimal.

## ILI Activity (Service Members) and Laboratory-Confirmed Influenza (All Beneficiaries)



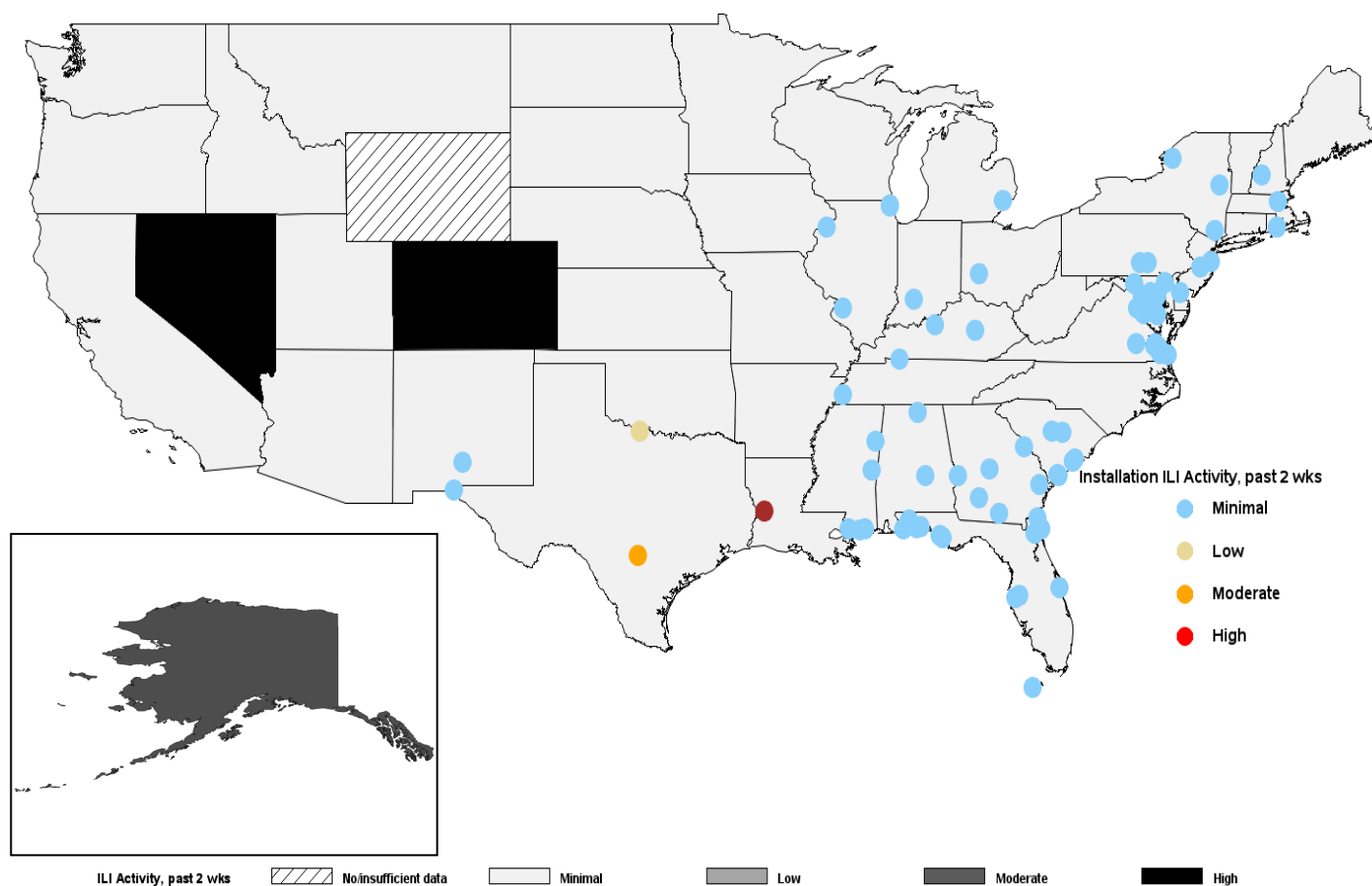
\*Locations colored in dark gray have no Service Member medical encounter data.

# Influenza Activity: NORTHCOM (2021-2022 Season: Week 15)

## **\*\* The COVID-19 mitigation efforts occurring across the world may impact ILI activity levels.**

- A majority of installations and states with available data had minimal to low ILI activity during week 15. Nevada, Colorado, and Alaska as well as Fort Polk, LA and Lackland Air Force Base, TX had moderate to high ILI activity.
- Due to delays in receiving MHS GENESIS data, installations using MHS GENESIS will not have 2-week ILI activity data.
- State level data includes both Military Treatment Facility (MTF) and outsourced care. Therefore, state activity levels may differ from the installation level data.
- Installation-level laboratory-confirmed influenza and COVID-19 case data can be found on pages 14-19 of the report.

## ILI Activity (Service Members) by State and Installation

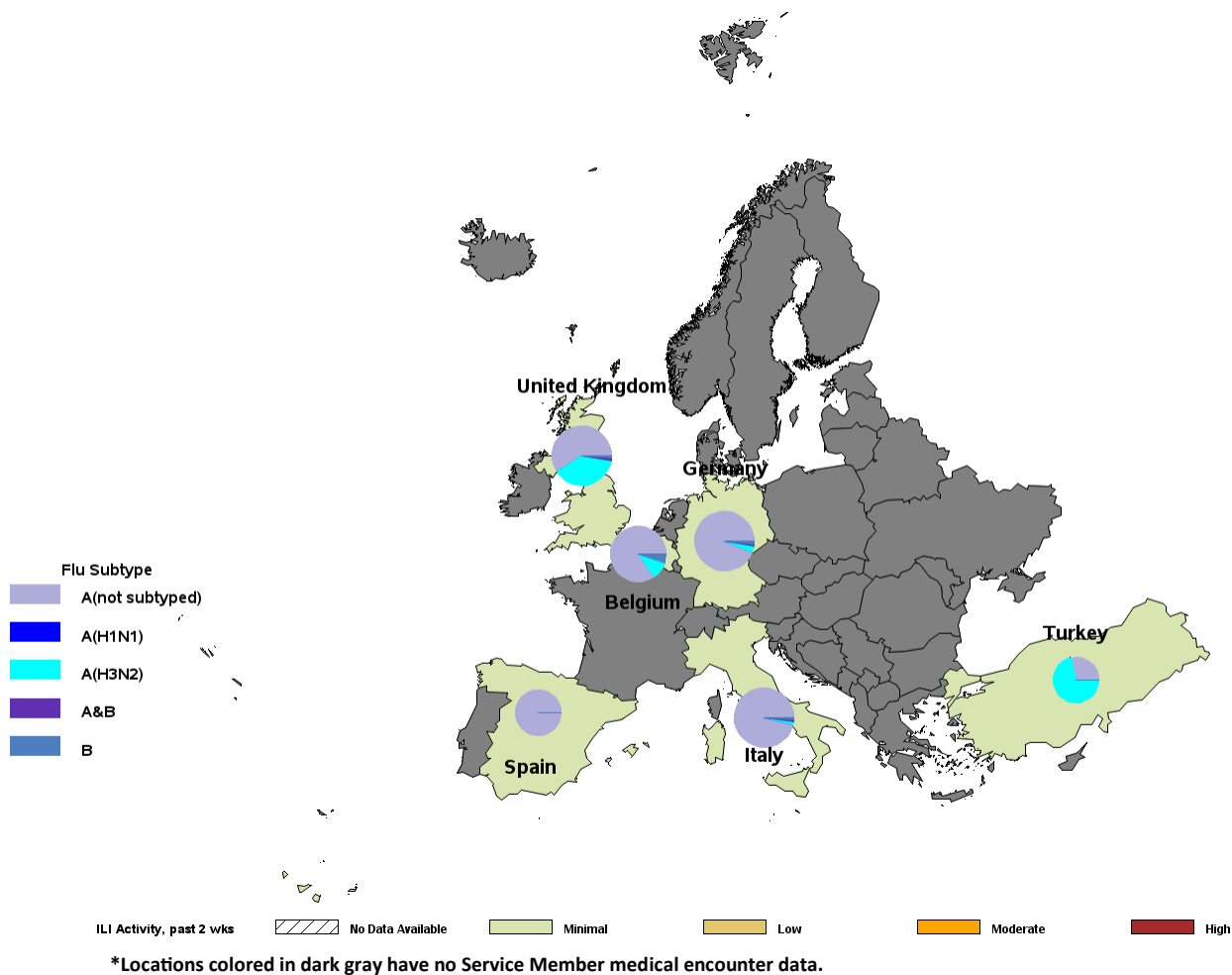


# Influenza and COVID-19 Activity: EUCOM (2021-2022 Season: Week 15)

**\*\* The COVID-19 mitigation efforts occurring across the world may impact ILI activity levels.**

- ILI activity was minimal in all countries with available data.
- The majority of laboratory-confirmed influenza cases for EUCOM have been reported in Germany and Italy.
- Installation-level laboratory-confirmed influenza and COVID-19 case data for EUCOM can be found on page 9 of the report.

## ILI Activity (Service Members) and Laboratory-Confirmed Influenza (All Beneficiaries)





# Confirmed Influenza and COVID-19: EUCOM (2021-2022 Season: Week 15)

## Laboratory-Confirmed Influenza by Installation (All Beneficiaries)

Country	Location	Service	A (not subtyped)		A (H1N1)		A (H3N2)		A & B		B		Total positive	Total tested	% Positive	Change from past 2 weeks
			2 wks	Season	2 wks	Season	2 wks	Season	2 wks	Season	2 wks	Season	2 wks	2 wks	2 wks	
Belgium	Shape	A	13	25	0	0	0	4	0	0	0	1	13	50	26	↑
Germany	Barton Barracks	A	0	0	0	0	0	0	0	0	0	0	0	0	0	↔
Germany	Landstuhl RMC	A	27	66	0	0	0	0	0	3	0	3	27	521	5	↑
Germany	Patch Barracks	A	0	0	0	0	0	0	0	0	0	0	0	0	0	↔
Germany	Ramstein AB	F	0	0	0	0	0	0	0	0	0	0	0	14	0	↔
Germany	Spangdahlem AB	F	0	0	0	0	0	4	0	0	0	0	0	2	0	↔
Germany	USAG Bavaria	A	37	118	0	0	0	0	0	0	0	0	37	180	21	↓
Germany	USAG Hohenfels/Amberg	A	5	14	0	0	0	0	0	0	0	0	5	28	18	↓
Germany	USAG Kaiserslautern	A	0	1	0	0	0	0	0	0	0	0	0	1	0	↔
Germany	USAG Katterbach	A	1	1	0	0	0	3	0	0	0	0	1	12	8	↑
Germany	USAG Wiesbaden	A	0	1	0	0	0	1	0	0	0	0	0	2	0	↔
Italy	Aviano AB	F	1	1	0	0	0	1	0	0	0	3	1	3	33	↓
Italy	NAS Sigonella	N	0	0	0	0	1	3	0	0	0	0	1	13	8	↓
Italy	NSA Naples	N	5	34	0	0	0	0	0	1	0	0	5	87	6	↓
Italy	USAG Italy	A	14	145	0	0	0	1	0	1	0	0	14	229	6	↓
Spain	NS Rota	N	5	9	0	0	0	0	0	0	0	0	5	24	21	↑
Turkey	Incirlik AB	F	0	2	0	0	1	5	0	0	0	0	1	8	13	↓
United Kingdom	RAF Alconbury	F	4	4	0	0	0	0	0	0	0	0	4	17	24	↑
United Kingdom	RAF Croughton	F	0	0	0	0	0	1	0	0	0	0	0	5	0	↔
United Kingdom	RAF Lakenheath	F	10	42	0	0	0	29	0	1	0	1	10	164	6	↑

## COVID-19 Cases Since Week 40 by Installation (All Beneficiaries)

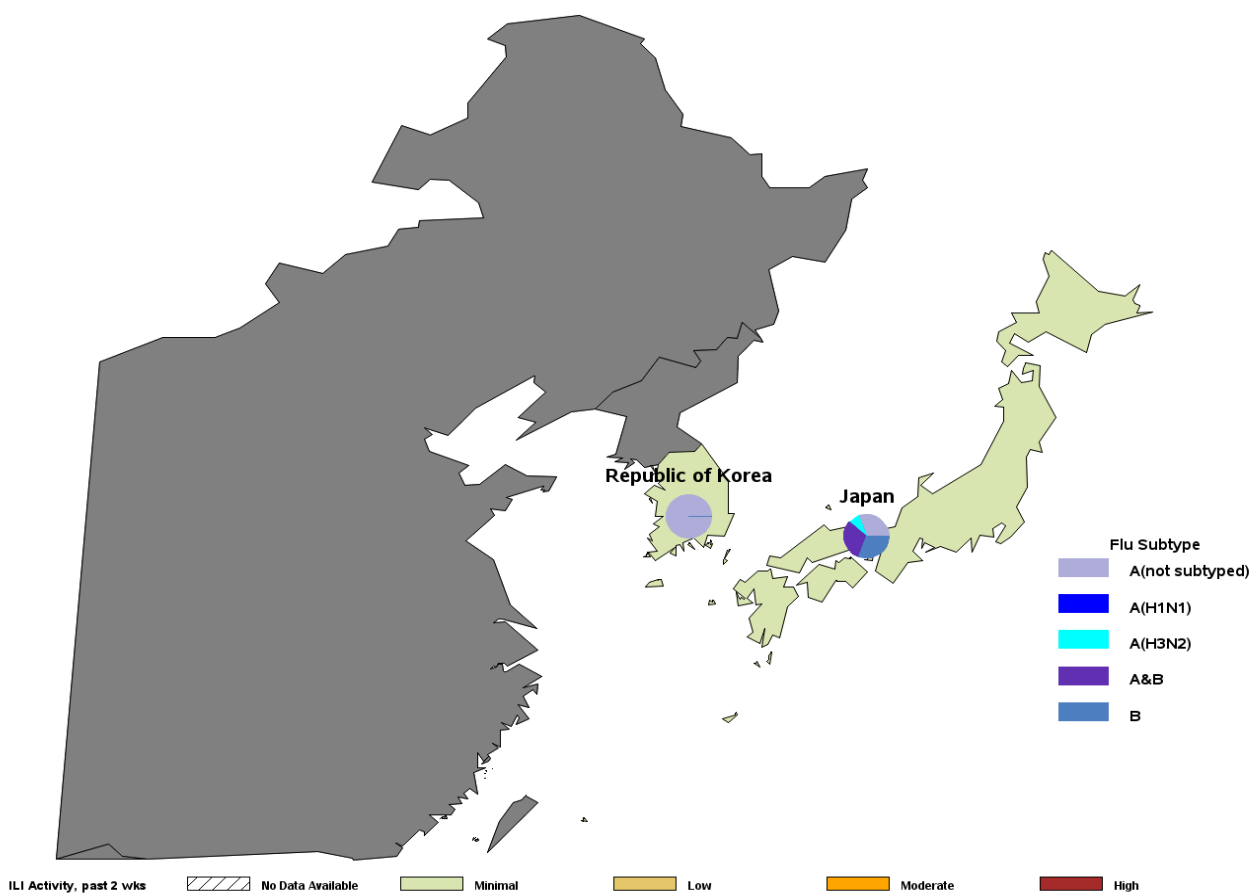
Country	Location	Service	COVID-19		Change from past 2 weeks
			2 wks	Since week 41	
Belgium	Shape	A	34	395	↓
Germany	Barton Barracks	A	0	16	↔
Germany	Landstuhl RMC	A	800	7467	↑
Germany	Patch Barracks	A	0	5	↔
Germany	Ramstein AB	F	287	1564	↓
Germany	Spangdahlem AB	F	43	873	↓
Germany	USAG Bavaria	A	95	3122	↓
Germany	USAG Hohenfels/Amberg	A	28	777	↓
Germany	USAG Kaiserslautern	A	18	137	↑
Germany	USAG Katterbach	A	44	656	↓
Germany	USAG Wiesbaden	A	108	1356	↓
Italy	Aviano AB	F	75	977	↑
Italy	NAS Sigonella	N	29	425	↑
Italy	NSA Naples	N	125	897	↑
Italy	USAG Italy	A	126	1181	↑
Spain	NS Rota	N	19	765	↓
Turkey	Incirlik AB	F	3	384	↓
United Kingdom	RAF Alconbury	F	4	110	↑
United Kingdom	RAF Croughton	F	7	81	↑
United Kingdom	RAF Lakenheath	F	70	2201	↓

# Influenza Activity: INDOPACOM (2021-2022 Season: Week 15)

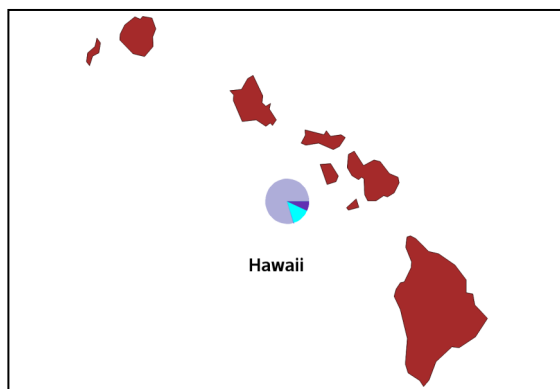
**\*\* The COVID-19 mitigation efforts occurring across the world may impact ILI activity levels.**

- ILI activity was high in Hawaii and minimal in all other countries with available data.
- Installation-level laboratory-confirmed influenza and COVID-19 case data for INDOPACOM can be found on page 11 of the report.

## ILI Activity (Service Members) and Laboratory-Confirmed Influenza (All Beneficiaries)



\*Locations colored in dark gray have no Service Member medical encounter data.



# Influenza Activity: INDOPACOM (2021-2022 Season: Week 15)

## Laboratory-Confirmed Influenza by Installation (All Beneficiaries)

Country	Location	Service	A (not sub-typed)		A (H1N1)		A (H3N2)		A & B		B		Total positive	Total tested	% Positive	Change from past 2 weeks
			2 wks	Season	2 wks	Season	2 wks	Season	2 wks	Season	2 wks	Season	2 wks	2 wks	2 wks	
Guam	JB Andersen	J	0	0	0	0	0	1	0	0	0	0	0	59	0	↔
Japan	CFA Okinawa	N	0	0	0	0	0	0	0	0	0	0	0	18	0	↔
Japan	CFA Yokosuka	N	0	0	0	0	0	0	0	0	0	0	0	4	0	↔
Japan	Camp Foster	N	0	0	0	0	0	0	0	0	0	0	0	0	0	↔
Japan	Camp Fuji	N	0	0	0	0	0	0	0	0	0	0	0	0	0	↔
Japan	Camp Zama	A	0	0	0	0	0	0	0	3	0	0	0	8	0	↔
Japan	Kadena AB	F	0	0	0	0	0	0	0	0	0	0	0	1	0	↔
Japan	MCAS Futenma	N	0	1	0	0	0	0	0	0	0	0	0	0	0	↔
Japan	MCAS Iwakuni	N	0	0	0	0	0	0	0	1	0	1	0	6	0	↔
Japan	Misawa AB	F	0	2	0	0	0	0	0	0	0	3	0	16	0	↔
Japan	NAF Atsugi	N	0	1	0	0	0	0	0	0	0	0	0	10	0	↔
Japan	NB Okinawa	N	0	0	0	0	0	0	0	0	0	0	0	14	0	↔
Japan	USFA Sasebo	N	0	0	0	0	0	0	0	0	0	0	0	4	0	↔
Japan	Yokota AB	F	0	0	0	0	0	1	0	0	0	0	0	16	0	↔
Korea, Republic of	CFA Chinhae	N	0	0	0	0	0	0	0	0	0	0	0	0	0	↔
Korea, Republic of	Camp Casey	A	0	0	0	0	0	0	0	0	0	0	0	0	0	↔
Korea, Republic of	Camp Humphreys	A	0	0	0	0	0	0	0	0	0	0	0	40	0	↔
Korea, Republic of	Camp Walker	A	0	0	0	0	0	0	0	0	0	0	0	1	0	↔
Korea, Republic of	Kunsan AB	F	0	0	0	0	0	0	0	0	0	0	0	4	0	↔
Korea, Republic of	Osan AB	F	0	0	0	0	0	0	0	0	0	0	0	23	0	↔
Korea, Republic of	Yongsan Garrison	A	0	0	0	0	0	0	0	0	0	0	0	17	0	↔
United States	Camp H M Smith	N	0	0	0	0	0	0	0	0	0	0	0	0	0	↔
United States	Ft Shafter	A	0	9	0	0	0	2	0	1	0	0	0	10	0	↔
United States	JB Pearl Harbor-Hickam	J	0	0	0	0	0	0	0	0	0	0	0	1	0	↔
United States	MCB Hawaii	N	0	0	0	0	0	0	0	0	0	0	0	0	0	↔
United States	Schofield Barracks	A	0	3	0	0	0	0	0	0	0	0	0	0	0	↔

## COVID-19 Cases Since Week 40 by Installation (All Beneficiaries)

Country	Location	Service	COVID-19		Change from past 2 weeks
			2 wks	Since week 41	
Guam	JB Andersen	J	100	4285	↓
Japan	CFA Okinawa	N	255	4131	↑
Japan	CFA Yokosuka	N	43	1725	↓
Japan	Camp Foster	N	13	235	↑
Japan	Camp Fuji	N	3	29	↔
Japan	Camp Zama	A	20	400	↑
Japan	Kadena AB	F	234	2152	↓
Japan	MCAS Futenma	N	16	453	↑
Japan	MCAS Iwakuni	N	37	1536	↑
Japan	Misawa AB	F	47	1202	↓
Japan	NAF Atsugi	N	13	449	↑
Japan	NB Okinawa	N	310	2328	↑
Japan	USFA Sasebo	N	16	424	↓
Japan	Yokota AB	F	150	1322	↓
Korea, Republic of	CFA Chinhae	N	0	0	↔
Korea, Republic of	Camp Casey	A	21	168	↓
Korea, Republic of	Camp Humphreys	A	280	624	↑
Korea, Republic of	Camp Walker	A	16	71	↓
Korea, Republic of	Kunsan AB	F	11	679	↓
Korea, Republic of	Osan AB	F	228	2414	↓
Korea, Republic of	Yongsan Garrison	A	428	6282	↓
United States	Camp H M Smith	N	0	0	↔
United States	Ft Shafter	A	185	5227	↑
United States	JB Pearl Harbor-Hickam	J	21	1784	↑
United States	MCB Hawaii	N	0	0	↔
United States	Schofield Barracks	A	0	0	↔

# Influenza Activity: SOUTHCOM (2021-2022 Season: Week 15)

**\*\* The COVID-19 mitigation efforts occurring across the world may impact ILI activity levels.**

- ILI activity was minimal in Cuba and Honduras.
- No laboratory-confirmed influenza cases have been reported for SOUTHCOM for the 2021-2022 season.

## ILI Activity (Service Members) and Laboratory-Confirmed Influenza (All Beneficiaries)



\*Locations colored in dark gray have no Service Member medical encounter data.

## Laboratory-Confirmed Influenza by Installation (All Beneficiaries)

Country	Location	Service	A (not sub-typed)		A (H1N1)		A (H3N2)		A & B		B		Total positive	Total tested	% Positive	Change from
			2 wks	Season	2 wks	Season	2 wks	Season	2 wks	Season	2 wks	Season	2 wks	2 wks	2 wks	past 2 weeks
Cuba	Guantanamo Bay	N	0	0	0	0	0	0	0	0	0	0	0	3	0	↔

## COVID-19 Cases Since Week 40 by Installation (All Beneficiaries)

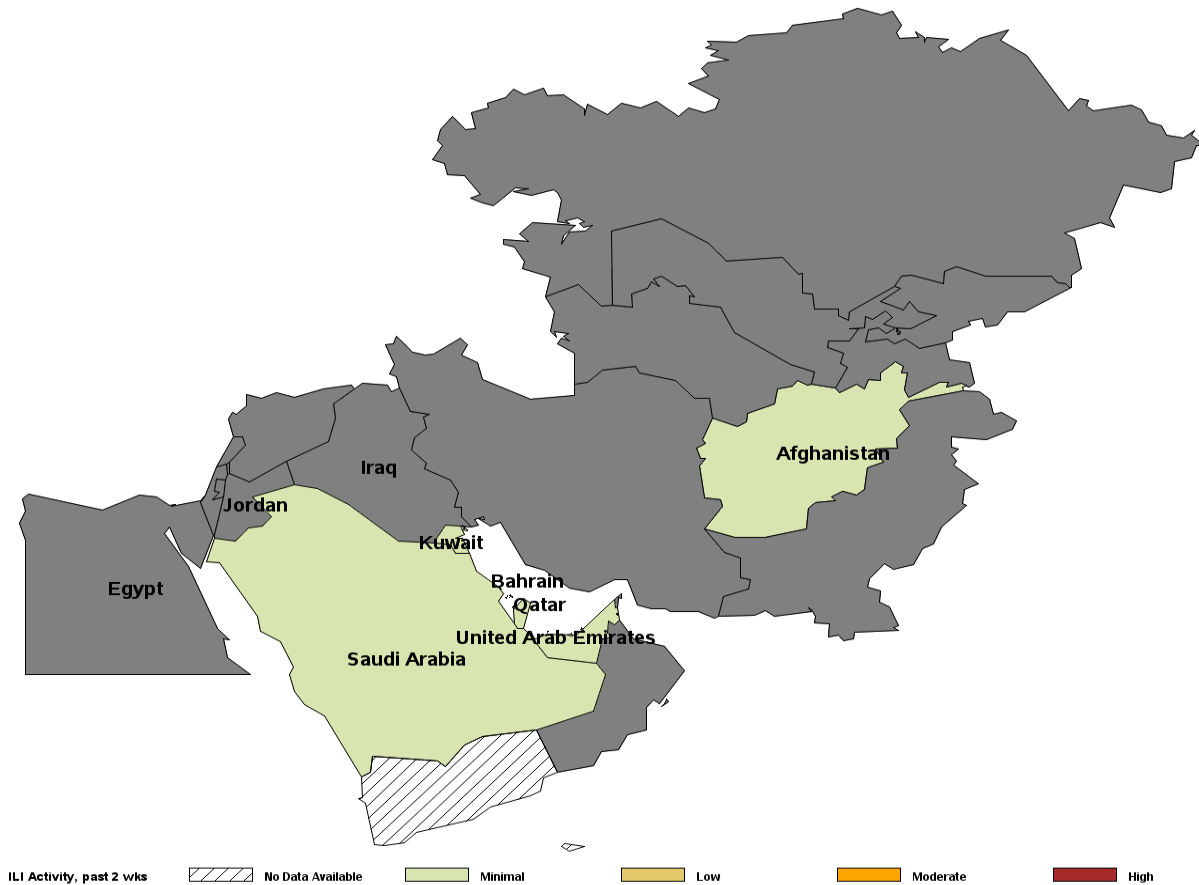
Country	Location	Service	COVID-19		Change from last report
			2 wks	Since week 41	
Cuba	Guantanamo Bay	N	0	163	↔

# Influenza Activity: CENTCOM (2021-2022 Season: Week 15)

**\*\* The COVID-19 mitigation efforts occurring across the world may impact ILI activity levels.**

- ILI activity was minimal in all countries with available data.

## ILI Activity (Service Members)



\*Locations colored in dark gray have no Service Member medical encounter data.

# NORTHCOM Laboratory-Confirmed Influenza

(2021-2022 Season: Week 15)

## Laboratory-Confirmed Influenza (All Beneficiaries) by Installation Alaska through Georgia

State	Location	Service	A (not subtyped)		A (H1N1)		A (H3N2)		A & B		B		Total positive	Total tested	% Positive	Change from past 2 weeks
			2 wks	Season	2 wks	Season	2 wks	Season	2 wks	Season	2 wks	Season	2 wks	2 wks	2 wks	
AK	Eielson AFB	F	0	0	0	0	0	0	0	0	0	0	0	0	0	↔
AK	Ft Greely	A	0	1	0	0	0	0	0	0	0	0	0	0	0	↔
AK	Ft Wainwright	A	2	29	0	0	0	0	0	0	0	1	2	2	100	↓
AK	JB Elmendorf-Richardson	J	0	49	0	0	0	4	0	0	0	6	0	3	0	↔
AL	Ft Rucker	A	3	46	0	0	0	0	0	0	0	23	3	47	6	↑
AL	Maxwell AFB	F	3	24	0	0	0	0	0	0	0	7	3	29	10	↑
AL	Redstone Arsenal	A	2	14	0	0	0	0	0	0	0	0	2	25	8	↔
AR	Little Rock AFB	F	0	62	0	0	0	0	0	0	0	1	0	0	0	↔
AZ	Davis-Monthan AFB	F	0	0	0	0	0	1	0	0	0	0	0	0	0	↔
AZ	Ft Huachuca	A	0	13	0	0	0	0	0	0	0	0	0	0	0	↔
AZ	Luke AFB	F	0	7	0	0	0	0	0	0	0	0	0	0	0	↔
AZ	MCAS Yuma	N	0	2	0	0	0	0	0	0	0	0	0	0	0	↔
CA	Beale AFB	F	0	0	0	0	0	0	0	0	0	1	0	0	0	↔
CA	Camp Pendleton	N	0	145	0	0	0	0	0	0	0	1	0	23	0	↔
CA	Edwards AFB	F	0	0	0	0	0	1	0	0	0	0	0	0	0	↔
CA	Ft Irwin	A	0	5	0	0	0	0	0	0	0	0	0	1	0	↔
CA	Los Angeles AFB	F	0	0	0	0	0	0	0	0	0	1	0	0	0	↔
CA	NAH Lemoore	N	0	0	0	0	0	1	0	0	0	0	0	0	0	↔
CA	NB Coronado	N	0	0	0	0	0	0	0	0	0	0	0	0	0	↔
CA	NB San Diego	N	0	24	0	0	1	55	0	0	0	7	1	26	4	↓
CA	NV Ventura County	N	0	0	0	0	0	0	0	0	0	0	0	0	0	↔
CA	Travis AFB	F	0	2	0	0	0	4	0	0	0	1	0	3	0	↔
CA	Twentynine Palms	N	1	17	0	0	0	1	0	0	0	0	1	4	25	↓
CA	USAG Presidio of Monterey	A	0	0	0	0	0	0	0	0	0	0	0	0	0	↔
CA	Vandenberg AFB	F	0	3	0	0	0	0	0	0	0	1	0	0	0	↔
CO	Buckley AFB	F	0	9	0	0	0	0	0	0	0	1	0	0	0	↔
CO	Ft Carson	A	8	257	0	0	0	0	0	8	0	34	8	31	26	↓
CO	Peterson AFB	F	0	32	0	0	0	0	0	0	0	0	0	0	0	↔
CO	USAF Academy	F	0	25	0	0	0	0	0	0	0	0	0	0	0	↔
CT	NSB New London	N	10	12	0	0	0	0	0	0	0	0	10	34	29	↓
DC	JB Anacostia-Bolling	F	0	0	0	0	0	2	0	0	0	0	0	52	0	↔
DC	Pentagon	J	1	3	0	0	0	2	0	0	0	0	1	12	8	↓
DC	Washington Navy Yard	N	0	0	0	0	0	0	0	0	0	0	0	0	0	↔
DE	Dover AFB	F	3	9	0	0	0	1	0	0	0	0	3	126	2	↑
FL	Eglin AFB	J	13	124	0	0	0	6	0	0	0	0	13	58	22	↓
FL	Hurlburt Field	F	0	42	0	0	0	0	0	3	0	0	0	14	0	↔
FL	Macdill AFB	F	1	29	0	0	0	4	0	0	4	32	5	40	13	↑
FL	NAS Jacksonville	J	8	105	0	0	0	11	0	4	1	27	9	74	12	↑
FL	NAS Key West	J	0	2	0	0	0	0	0	0	0	9	0	10	0	↔
FL	NAS Pensacola	N	22	234	0	0	0	0	0	0	0	25	22	276	8	↑
FL	NAS Whiting Field	N	0	11	0	0	0	0	0	0	0	13	0	4	0	↔
FL	NS Mayport	J	1	4	0	0	0	0	0	0	1	1	2	6	33	↓
FL	Patrick AFB	F	1	9	0	0	0	0	0	4	0	1	1	30	3	↓
FL	Tyndall AFB	F	2	42	0	0	0	0	0	0	0	4	2	63	3	↑
GA	Ft Benning	A	4	85	0	0	0	0	0	3	0	13	4	64	6	↑
GA	Ft Gordon	A	8	94	0	0	0	1	0	5	1	2	9	119	8	↑
GA	Ft Stewart	A	2	24	0	0	0	0	0	2	0	1	2	42	5	↓
GA	Hunter Army Airfield	A	0	0	0	0	0	0	0	0	0	0	0	7	0	↔
GA	Moody AFB	F	0	33	0	0	0	29	0	0	0	0	0	10	0	↔
GA	NAS Albany	J	0	4	0	0	0	0	0	0	0	2	0	1	0	↔
GA	NSB Kings Bay	J	0	2	0	0	0	0	0	0	0	1	0	4	0	↔
GA	Robins AFB	F	0	0	0	0	3	34	0	0	0	0	3	85	4	↑

# NORTHCOM COVID-19 Cases

(2021-2022 Season: Week 15)

## COVID-19 Cases Since Week 40 (All Beneficiaries) by Installation Alaska through Georgia

State	Location	Service	COVID-19		Change from past 2 weeks
			2 wks	Since week 41	
AK	Eielson AFB	F	24	985	↑
AK	Ft Wainwright	A	15	1771	↓
AK	JB Elmendorf-Richardson	J	84	3913	↑
AL	Ft Rucker	A	5	374	↓
AL	Maxwell AFB	F	8	1063	↑
AL	Redstone Arsenal	A	0	308	↔
AR	Little Rock AFB	F	4	863	↓
AZ	Davis-Monthan AFB	F	1	498	↔
AZ	Ft Huachuca	A	10	888	↑
AZ	Luke AFB	F	9	1597	↑
CA	Beale AFB	F	1	607	↓
CA	Camp Pendleton	N	40	5889	↑
CA	Edwards AFB	F	2	551	↓
CA	Ft Irwin	A	21	1862	↓
CA	Los Angeles AFB	F	1	145	↓
CA	NAH Lemoore	N	1	1397	↓
CA	NB San Diego	N	49	9807	↓
CA	Travis AFB	F	24	1575	↓
CA	Twentynine Palms	N	3	1419	↓
CA	USAG Presidio of Monterey	A	42	882	↑
CA	Vandenberg AFB	F	1	835	↓
CO	Buckley AFB	F	4	644	↔
CO	Ft Carson	A	49	7859	↑
CO	Peterson AFB	F	13	1249	↑
CO	Schriever AFB	F	0	64	↔

State	Location	Service	COVID-19		Change from past 2 weeks
			2 wks	Since week 41	
CO	USAF Academy	F	9	1149	↓
CT	NSB New London	N	10	641	↑
DC	JB Anacostia-Bolling	F	15	629	↑
DC	JB Myer-Henderson Hall	A	0	37	↔
DC	Pentagon	J	21	636	↑
DC	Washington Navy Yard	N	4	44	↑
DE	Dover AFB	F	25	1022	↓
FL	Eglin AFB	J	9	2827	↓
FL	Hurlburt Field	F	10	675	↓
FL	Macdill AFB	F	11	875	↓
FL	NAS Jacksonville	J	22	3234	↑
FL	NAS Key West	J	2	214	↑
FL	NAS Pensacola	N	17	1844	↑
FL	NAS Whiting Field	N	0	84	↔
FL	NS Mayport	J	7	1209	↑
FL	Patrick AFB	F	6	518	↑
FL	Tyndall AFB	F	3	381	↓
GA	Ft Benning	A	23	3651	↑
GA	Ft Gordon	A	39	4084	↑
GA	Ft Stewart	A	19	3136	↑
GA	Hunter Army Airfield	A	5	1245	↑
GA	Moody AFB	F	9	873	↑
GA	NAS Albany	J	0	59	↔
GA	NSB Kings Bay	J	3	663	↔
GA	Robins AFB	F	6	703	↑

# NORTHCOM Laboratory-Confirmed Influenza

(2021-2022 Season: Week 15)

## Laboratory-Confirmed Influenza (All Beneficiaries) by Installation Idaho through New York

State	Location	Service	A (not subtyped)		A (H1N1)		A (H3N2)		A & B		B		Total positive	Total tested	% Positive	Change from past 2 weeks
			2 wks	Season	2 wks	Season	2 wks	Season	2 wks	Season	2 wks	Season	2 wks	2 wks	2 wks	
ID	Mountain Home AFB	F	0	3	0	0	0	0	0	0	0	2	0	0	0	↔
IL	NS Great Lakes	N	52	110	0	0	29	81	0	0	0	1	81	611	13	↓
IL	Rock Island Arsenal	A	0	0	0	0	0	0	0	0	0	0	0	0	0	↔
IL	Scott AFB	F	0	0	0	0	10	19	0	0	0	0	10	34	29	↓
KS	Ft Leavenworth	A	0	12	0	0	0	0	0	0	0	2	0	0	0	↔
KS	Ft Riley	A	3	117	0	0	0	0	0	0	0	0	3	6	50	↓
KS	McConnell AFB	F	0	20	0	0	0	0	0	0	0	0	0	0	0	↔
KY	Ft Campbell	A	54	266	0	0	0	0	1	3	3	28	58	397	15	↑
KY	Ft Knox	A	0	4	0	0	0	0	1	2	0	4	1	5	20	↓
LA	Barksdale AFB	F	0	13	0	0	0	0	0	0	0	3	0	0	0	↔
LA	Ft Polk	A	0	149	0	0	0	4	0	1	0	1	0	3	0	↔
LA	NAS Belle Chase	N	0	0	0	0	0	0	0	0	0	0	0	0	0	↔
MA	Hanscom AFB	F	0	2	0	0	1	4	0	0	0	2	1	14	7	↑
MD	Aberdeen Proving Ground	A	1	9	0	0	0	0	0	0	0	13	1	17	6	↓
MD	Ft Detrick	A	1	12	0	0	0	0	0	0	1	10	2	28	7	↓
MD	Ft Meade	A	5	23	0	0	0	0	1	0	0	1	5	33	15	↑
MD	JB Andrews	F	6	52	0	0	0	0	0	0	0	0	6	181	3	↔
MD	NAS Patuxent River	N	0	6	0	0	0	0	0	0	0	0	0	27	0	↔
MD	NBHC Bancroft Hall	N	22	191	0	0	29	261	0	0	0	0	51	300	17	↓
MD	NHC Annapolis	N	1	4	0	0	0	0	0	0	0	0	1	36	3	↑
MD	NSF Indian Head	N	0	0	0	0	0	1	0	0	0	0	0	9	0	↔
MD	WRNMMC	J	0	9	0	0	20	87	0	0	0	2	20	328	6	↑
MO	Ft Leonard Wood	A	1	87	0	0	0	0	0	3	0	7	1	3	33	↓
MO	Whiteman AFB	F	0	17	0	0	0	0	0	0	0	0	0	0	0	↔
MS	Columbus AFB	F	0	5	0	0	0	0	0	0	0	0	0	6	0	↔
MS	Keesler AFB	J	10	91	0	0	2	14	0	1	0	0	12	257	5	↓
MS	NAS Meridian	N	1	49	0	0	0	0	1	1	1	19	2	15	13	↑
MS	NBHC Gulfport	N	0	3	0	0	0	0	0	0	0	0	0	4	0	↔
MT	Malmstrom AFB	F	0	8	0	0	0	0	0	0	0	0	0	0	0	↔
NC	Camp Lejeune	N	2	248	0	0	0	0	0	4	0	25	2	11	18	↓
NC	Ft Bragg	J	0	64	0	0	0	4	0	1	0	0	0	1	0	↔
NC	MCAS Cherry Point	N	0	37	0	0	0	0	0	0	0	18	0	0	0	↔
NC	Pope Army Airfield	J	0	2	0	0	0	0	0	0	0	0	0	0	0	↔
NC	Seymour Johnson AFB	J	0	21	0	0	0	0	0	4	0	0	0	0	0	↔
ND	Grand Forks AFB	F	0	5	0	0	0	0	0	0	0	0	0	0	0	↔
ND	Minot AFB	F	0	11	0	0	0	0	0	0	0	0	0	0	0	↔
NE	Offutt AFB	F	0	8	0	0	0	0	0	0	0	0	0	0	0	↔
NH	Portsmouth	N	0	4	0	0	0	0	0	0	0	2	0	5	0	↔
NJ	JB McGuire-Dix-Lakehurst	F	42	81	0	0	0	0	3	0	0	0	42	195	22	↑
NM	Cannon AFB	F	0	5	0	0	0	0	0	0	0	1	0	0	0	↔
NM	Holloman AFB	F	0	17	0	0	0	0	0	0	0	0	0	41	0	↔
NM	Kirtland AFB	F	0	0	0	0	0	0	0	0	0	1	0	0	0	↔
NM	White Sands Missile Range	A	0	5	0	0	0	0	0	0	0	0	0	11	0	↔
NV	Nellis AFB	F	0	39	0	0	5	81	0	1	0	4	5	19	26	↓
NY	Ft Drum	A	16	38	0	0	1	10	0	0	0	0	17	53	32	↑
NY	West Point	A	7	129	0	0	0	0	0	2	1	6	8	67	12	↓



# NORTHCOM COVID-19 Cases

(2021-2022 Season: Week 15)

## COVID-19 Cases Since Week 40 (All Beneficiaries) by Installation Idaho through New York

State	Location	Service	COVID-19		Change from past 2 weeks
			2 wks	Since week 41	
ID	Mountain Home AFB	F	5	888	↓
IL	NS Great Lakes	N	39	1892	↑
IL	Scott AFB	F	3	632	↑
KS	Ft Leavenworth	A	3	860	↑
KS	Ft Riley	A	8	1873	↑
KS	McConnell AFB	F	1	656	↔
KY	Ft Campbell	A	44	7168	↓
KY	Ft Knox	A	9	1149	↓
LA	Barksdale AFB	F	9	765	↑
LA	Ft Polk	A	6	1878	↑
LA	NAS Belle Chase	N	0	7	↔
MA	Hanscom AFB	F	8	318	↑
MD	Aberdeen Proving Ground	A	7	252	↑
MD	Ft Detrick	A	12	397	↓
MD	Ft Meade	A	68	1995	↑
MD	JB Andrews	F	43	1833	↑
MD	NAS Patuxent River	N	8	414	↑
MD	NBHC Bancroft Hall	N	13	390	↑
MD	NHC Annapolis	N	4	214	↑
MD	NSF Indian Head	N	2	77	↔
MD	WRNMMC	J	116	3352	↑
MO	Ft Leonard Wood	A	40	3451	↓
MO	Whiteman AFB	F	0	420	↔
MS	Columbus AFB	F	0	317	↔
MS	Keesler AFB	J	18	2446	↑
MS	NAS Meridian	N	0	149	↔
MS	NBHC Gulfport	N	0	49	↔
MT	Malmstrom AFB	F	0	954	↔
NC	Camp Lejeune	N	31	8098	↑
NC	Ft Bragg	J	51	12068	↑
NC	MCAS Cherry Point	N	0	941	↔
NC	Pope Army Airfield	J	0	407	↔
NC	Seymour Johnson AFB	J	10	923	↑
ND	Grand Forks AFB	F	7	278	↑
ND	Minot AFB	F	3	1300	↓
NE	Offutt AFB	F	11	1126	↓
NH	Portsmouth	N	0	108	↔
NJ	JB McGuire-Dix-Lakehurst	F	24	1190	↑
NM	Cannon AFB	F	0	1221	↔
NM	Holloman AFB	F	39	1685	↓
NM	Kirtland AFB	F	3	544	↓
NM	White Sands Missile Range	A	1	153	↔
NV	Nellis AFB	F	36	4063	↑
NY	Ft Drum	A	114	2975	↑
NY	West Point	A	0	289	↔

# NORTHCOM Laboratory-Confirmed Influenza

(2021-2022 Season: Week 15)

## Laboratory-Confirmed Influenza (All Beneficiaries) by Installation Ohio through Wyoming

State	Location	Service	A (not subtyped)		A (H1N1)		A (H3N2)		A & B		B		Total positive	Total tested	% Positive	Change from past 2 weeks
			2 wks	Season	2 wks	Season	2 wks	Season	2 wks	Season	2 wks	Season	2 wks	2 wks	2 wks	
OH	Wright-Patterson AFB	F	16	118	0	1	2	21	0	0	1	1	19	132	14	↑
OK	Altus AFB	F	0	67	0	0	0	2	0	0	0	1	0	0	0	↔
OK	Ft Sill	A	0	155	0	0	0	0	0	4	0	6	0	0	0	↔
OK	Tinker AFB	F	0	1	0	0	0	40	0	0	0	0	0	0	0	↔
OK	Vance AFB	F	0	5	0	0	0	9	0	1	0	0	0	0	0	↔
PA	Carlisle Barracks	A	6	34	0	0	0	0	0	0	0	13	6	44	14	↓
PR	Ft Buchanan	A	1	4	0	0	0	0	0	0	0	0	1	31	3	↑
RI	NHC New England	N	0	3	0	0	0	0	0	0	0	0	0	8	0	↔
SC	Ft Jackson	A	6	68	0	0	0	2	0	0	0	1	6	49	12	↓
SC	JB Charleston	J	3	29	0	0	0	3	0	0	0	1	3	85	4	↓
SC	MCAS Beaufort	N	8	17	0	0	0	23	0	0	0	0	8	37	22	↑
SC	Parris Island	N	14	90	0	0	0	0	0	0	1	25	15	66	23	↓
SC	Shaw AFB	F	13	47	0	0	0	0	0	0	0	0	13	104	13	↑
SD	Ellsworth AFB	F	0	50	0	0	0	0	0	0	0	0	0	0	0	↔
TN	Ft Campbell	A	14	34	0	0	0	0	0	0	2	4	16	66	24	↑
TN	NSA Mid-South	N	1	15	0	0	0	0	0	0	0	3	1	27	4	↑
TX	Dyess AFB	F	0	29	0	0	0	0	0	0	0	10	0	0	0	↔
TX	Ft Bliss	A	69	221	0	0	0	107	0	1	0	4	69	468	15	↑
TX	Ft Hood	A	6	266	0	0	0	8	0	11	0	25	6	13	46	↓
TX	Goodfellow AFB	F	0	40	0	0	0	0	0	0	0	6	0	0	0	↔
TX	JB San Antonio	J	7	443	0	0	0	16	0	12	0	1	7	53	13	↓
TX	Laughlin AFB	F	0	6	0	0	0	0	0	1	0	0	0	0	0	↔
TX	NAS Corpus Christi	N	0	1	0	0	0	3	0	0	0	0	0	0	0	↔
TX	NAS JRB Fort Worth	N	0	0	0	0	0	0	0	0	0	0	0	0	0	↔
TX	NAS Kingsville	N	0	0	0	0	0	0	0	0	0	0	0	0	0	↔
TX	Sheppard AFB	F	0	0	0	0	30	163	0	0	0	0	30	153	20	↓
UT	Hill AFB	F	0	0	0	0	0	7	0	0	0	0	0	0	0	↔
VA	Ft Belvoir	J	15	120	0	0	1	4	0	1	1	10	17	241	7	↓
VA	Ft Lee	A	8	24	0	0	0	0	0	1	0	1	8	38	21	↓
VA	JB Langley-Eustis	J	5	45	0	0	4	21	0	2	0	0	9	327	3	↑
VA	JB Little Creek-Ft Story	J	0	0	0	0	0	1	0	0	0	0	0	2	0	↔
VA	JB Myer-Henderson Hall	A	0	0	0	0	0	3	0	0	0	0	0	3	0	↔
VA	MCB Quantico	N	0	18	0	0	0	0	0	0	0	0	0	35	0	↔
VA	NAS Oceana	N	0	0	0	1	1	8	0	0	0	0	1	13	8	↓
VA	NB Dam Neck	N	0	0	0	0	0	6	0	0	0	0	0	3	0	↔
VA	NS Norfolk	N	1	1	0	0	1	7	0	0	0	0	2	12	17	↓
VA	NWS Dahlgren	N	0	1	0	0	0	0	0	0	0	0	0	8	0	↔
VA	NWS Yorktown	N	0	8	0	0	0	5	0	0	0	0	0	8	0	↔
VA	Portsmouth	N	0	1	0	0	3	30	0	2	0	0	3	77	4	↑
VA	TPC Chesapeake	N	0	0	0	0	0	0	0	0	0	0	0	0	0	↔
VA	TPC Suffolk	N	0	0	0	0	0	0	0	0	0	0	0	0	0	↔
WY	FE Warren AFB	F	0	2	0	0	0	0	0	0	0	0	0	0	0	↔

# NORTHCOM COVID-19 Cases

(2021-2022 Season: Week 15)

## COVID-19 Cases Since Week 40 (All Beneficiaries) by Installation Ohio through Wyoming

State	Location	Service	COVID-19		Change from past 2 weeks
			2 wks	Since week 41	
OH	Wright-Patterson AFB	F	26	3332	↔
OK	Altus AFB	F	0	545	↔
OK	Ft Sill	A	13	2706	↓
OK	Tinker AFB	F	0	671	↔
OK	Vance AFB	F	1	365	↔
PA	Carlisle Barracks	A	7	362	↑
PR	Ft Buchanan	A	17	162	↑
RI	NHC New England	N	8	317	↑
SC	Ft Jackson	A	23	2653	↑
SC	JB Charleston	J	1	1203	↓
SC	MCAS Beaufort	N	2	637	↔
SC	Parris Island	N	0	409	↔
SC	Shaw AFB	F	13	1293	↑
SD	Ellsworth AFB	F	5	847	↑
TN	Ft Campbell	A	2	43	↔
TN	NSA Mid-South	N	3	259	↑
TX	Dyess AFB	F	0	518	↔
TX	Ft Bliss	A	42	10812	↓
TX	Ft Hood	A	38	12766	↑
TX	Goodfellow AFB	F	1	363	↔
TX	JB San Antonio	J	73	12718	↑
TX	Laughlin AFB	F	0	260	↔
TX	NAS Corpus Christi	N	0	104	↔
TX	NAS JRB Fort Worth	N	0	49	↔
TX	NAS Kingsville	N	0	27	↔
TX	Sheppard AFB	F	5	895	↓
UT	Hill AFB	F	9	1097	↓
VA	Ft Belvoir	J	130	4869	↑
VA	Ft Lee	A	36	1643	↑
VA	JB Langley-Eustis	J	35	4183	↑
VA	JB Little Creek-Ft Story	J	23	2066	↑
VA	JB Myer-Henderson Hall	A	10	597	↑
VA	MCB Quantico	N	12	459	↑
VA	NAS Oceana	N	1	64	↔
VA	NB Dam Neck	N	0	46	↔
VA	NBHC Chesapeake	N	0	23	↔
VA	NS Norfolk	N	1	67	↔
VA	NWS Dahlgren	N	1	115	↔
VA	NWS Yorktown	N	4	127	↑
VA	Portsmouth	N	102	14072	↑
VA	TPC Chesapeake	N	0	5	↔
VA	TPC Suffolk	N	0	4	↔
WY	FE Warren AFB	F	2	704	↔

# Surveillance Programs and Data Sources

## Defense Health Agency / Armed Forces Health Surveillance Division (AFHSD):

The Armed Forces Health Surveillance Division (AFHSD) is the central epidemiologic resource for the U.S. Armed Forces, conducting medical surveillance to protect those who serve our nation in uniform and allies who are critical to our national security interests. The Epidemiology and Analysis Section of AFHSD, the Epi Data Center of the Navy and Marine Corps Public Health Center, and the Air Force Satellite Office in Dayton, Ohio (Wright-Patterson AFB) have compiled data for this report from the following sources below.

## Influenza-like Illness Activity:

Medical encounter and demographic data from the AFHSD's Defense Medical Surveillance System (DMSS) are used to generate portions of this report. ICD-10 codes from outpatient encounters are used to identify influenza-like illness (ILI). ILI is defined using the following codes: B97.89, H66.9, H66.90, H66.91, H66.92, H66.93, J00, J01.9, J01.90, J06.9, J09, J09.X, J09.X1, J09.X2, J09.X3, J09.X9, J10, J10.0, J10.00, J10.01, J10.08, J10.1, J10.2, J10.8, J10.81, J10.82, J10.83, J10.89, J11, J11.0, J11.00, J11.08, J11.1, J11.2, J11.8, J11.81, J11.82, J11.83, J11.89, J12.89, J12.9, J18, J18.1, J18.8, J18.9, J20.9, J40, R05, R50.9.

The percentage of all outpatient visits that have an ILI code is calculated each week for all service members, regardless of component. These data are presented weekly for the current season and compared to the four prior seasons among service members. Influenza activity levels are calculated by comparing the mean reported percent of visits due to ILI for the previous two weeks to the mean reported percent of visits due to ILI during baseline weeks (defined as non-influenza weeks (weeks 22-39) over the past 3 years). Since the 2020-2021 influenza season was nearly non-existent due to COVID-19 mitigation efforts, this season was excluded from the baseline calculations. The baseline weeks for the 2021-2022 report are from the years 2018, 2019, and 2020. There are four influenza activity levels, minimal, low, moderate, and high. The activity level corresponds to the number of standard deviations (SD) below, at or above the mean for the current 2 week period compared to the mean of the baseline weeks. Minimal activity corresponds to an influenza percentage that is less than 2 SD above the mean. Low activity corresponds to an influenza percentage that is equal to or greater than 2 SD above the mean, but less than 4 SD above the mean. Moderate activity corresponds to an influenza percentage that is equal to or greater than 4 SD above the mean, but less than 6 SD above the mean. High activity corresponds to an influenza percentage that is equal to or greater than 6 SD above the mean.

Influenza activity levels are presented in the Combatant Command (CCMD) maps, either by Installation, state, or country.

## Influenza Positive Specimens:

Influenza lab results (HL-7 formatted data) are compiled and transmitted from the Navy and Marine Corps Public Health Center to AFHSD. Results obtained via PCR, viral culture, and rapid influenza assays are reported. Although the inclusion of rapid tests may underestimate the weekly and cumulative percent positive estimates due to false negatives, visibility of the positive rapid results provides valuable information for this surveillance report. Influenza types/subtypes are categorized as influenza A/not subtyped, influenza A(H1N1), influenza A(H3N2), influenza A and B co-infection, and influenza B. Additionally, laboratory-confirmed positive results are used to identify influenza-related hospitalization cases across the DoD.

The percent positivity is calculated by dividing the number of influenza positive specimens by the total number of specimens (positive and negative only; inconclusive results are excluded). The distributions of percent positive specimens by subtype are presented on a weekly basis for the entire influenza season. For each CCMD state, the distribution of subtypes for the previous 2 weeks are presented as pie graphs for states and countries. For installations, data are presented in tables with counts and percent positive by subtype for the past 2 weeks and for the entire season. The "change from last report" column reports the absolute difference in the percent positive from the prior week's report to the current week's report.

# Surveillance Programs and Data Sources

## **COVID-19 Cases:**

COVID-19 case data are compiled from the COVID-19 positive lab results (HL-7 formatted data) and cases reported in the DRSi. The percent positivity calculation is restricted to only COVID-19 cases reported through the lab data so that an accurate denominator can be obtained. The percent positivity is calculated by dividing the number of COVID-19 positive specimens by the total number of specimens tested for COVID-19. For installations, COVID-19 case data are presented in tables with case counts for the past 2 weeks and for the entire influenza season (Week 40 to current). The “change from last report” column reports the absolute difference in the number of COVID-19 case counts from the prior week’s report to the current week’s report.

## **Pharmacy Transactions for Dispensed Influenza Antiviral Prescriptions:**

HL7-formatted pharmacy transactions are used to assess the number of dispensed influenza antiviral (AV) prescriptions. Four influenza AV medications approved by the Food and Drug Administration (FDA) are recommended by the CDC for use in the United States (US) for the 2019-2020 influenza season: oral oseltamivir (Tamiflu® or generic), inhaled zanamivir (Relenza®), and intravenous peramivir (Rapivab®), and baloxavir marboxil (Xofluza®). These prescriptions are included in this surveillance. The overall count of dispensed AV prescriptions by week is presented graphically for the influenza season. A seasonal baseline is displayed with dispensed AV prescriptions. Surveillance thresholds are displayed with the count of inpatient dispensed AV prescriptions. Additionally, counts of inpatient dispensed influenza AV prescriptions are presented weekly for the influenza season.

## **Influenza Baselines, Thresholds, and Trends:**

Weekly baselines used a three-year average to compare results with those from the same week during the previous three seasons. Since the 2020-2021 influenza season was nearly non-existent due to COVID-19 mitigation efforts, this season was excluded from the baseline calculations. The baseline calculations used the 2017-2018, 2018-2019, and 2019-2020 season data. Bands for one and two standard deviations above seasonal baseline estimates are displayed to indicate when trends diverge with respect to timing or volume from those of recent seasons. The ILI, lab, and dispensed AV prescription data thresholds are calculated by adding two standard deviations to the off-season average.

Inpatient thresholds (lab and dispensed AV prescription data) are calculated by adding one standard deviation to the overall weighted average for in-season weeks. Weeks that represent at least 2% of the total season’s laboratory-positive influenza cases for at least two consecutive weeks was considered to be “in-season” or influenza weeks; all other weeks are considered to be “off-season” or non-influenza weeks.

## **Links to Service-Specific Influenza Reports:**

Select the following links to see service-specific influenza surveillance weekly reports:

- Navy and Marine Corps Public Health Center (NMCPHC):  
<https://www.med.navy.mil/sites/nmcphc/epi-data-center/influenza/Pages/default.aspx>
- United States Air Force School of Aerospace Medicine (USAFSAM)/Defense Health Agency (DHA):  
To access the Air Force weekly influenza reports, an AFNet account is required. Anyone with a CAC can request access to AFNet at: <https://epi.afds.af.mil/nonaf>