

# DoD Consolidated Influenza Surveillance Report

Week 4 (22 January 2023 — 28 January 2023)



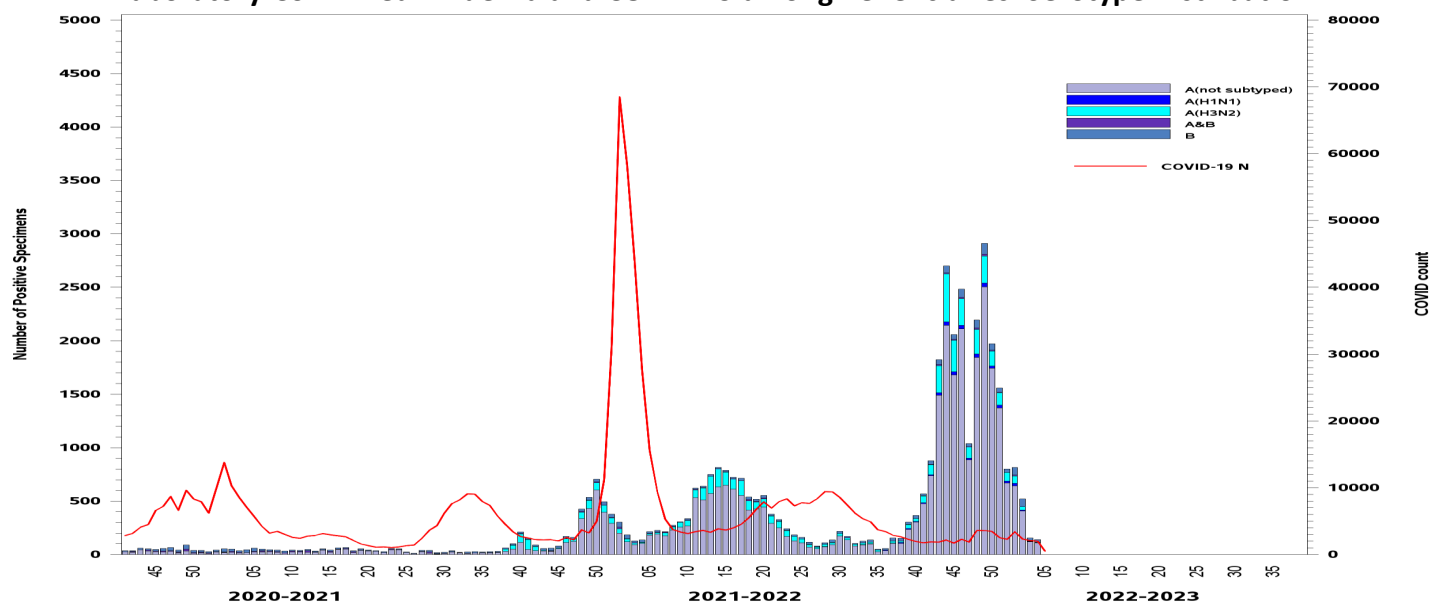
## One Page Summary: Weekly Highlights

- Laboratory-confirmed influenza cases and dispensed antiviral prescription counts were low among all beneficiaries and service members during week 4 of the 2022-2023 influenza season.
- The majority of US states and installations with available data had minimal to low ILI activity.
- COVID-19 cases accounted for a majority of all influenza and COVID-19 cases combined for all populations except beneficiaries 0-17 year of age, for whom influenza has predominated.
- No new laboratory-confirmed influenza hospitalizations were reported during week 4, but 12 additional hospitalizations were reported for previous weeks (season total: 288).

## Influenza Surveillance Indicators (2022-2023 season)

| All Beneficiaries              | Total Per Week |  | Trend | Activity Level |
|--------------------------------|----------------|--|-------|----------------|
| Laboratory Cases               | 140            |  | ▼     | Low            |
| Dispensed Antivirals           | 55             |  | ◀▶    | Low            |
| Severity                       |                |  |       | Activity Level |
| Inpatient Laboratory Cases     | 1              |  | ◀▶    | Low            |
| Inpatient Dispensed Antivirals | 2              |  | ◀▶    | Low            |
| Active Component               |                |  |       | Activity Level |
| Laboratory Cases               | 62             |  | ▼     | Low            |
| Dispensed Antivirals           | 22             |  | ◀▶    | Low            |
| ILI Outpatient Visits          | 2%             |  | ◀▶    | Minimal        |

## Laboratory-Confirmed Influenza and COVID-19 among Beneficiaries: Serotype Distribution

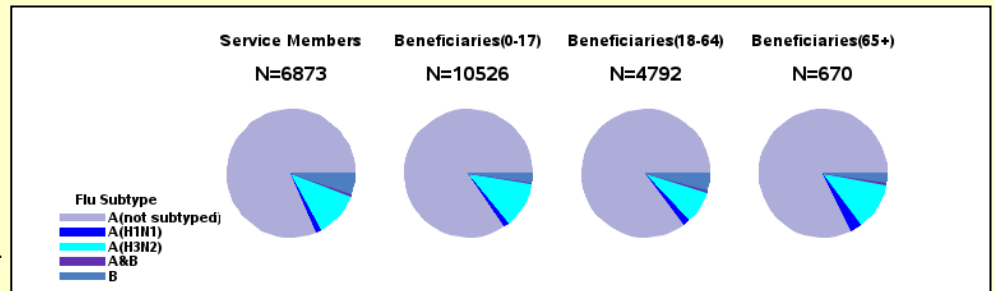


# Confirmed Influenza and COVID-19 Cases (2022-2023 Season: Week 4)

\*Reporting of laboratory data from MHS GENESIS sites is typically delayed by 2-3 weeks

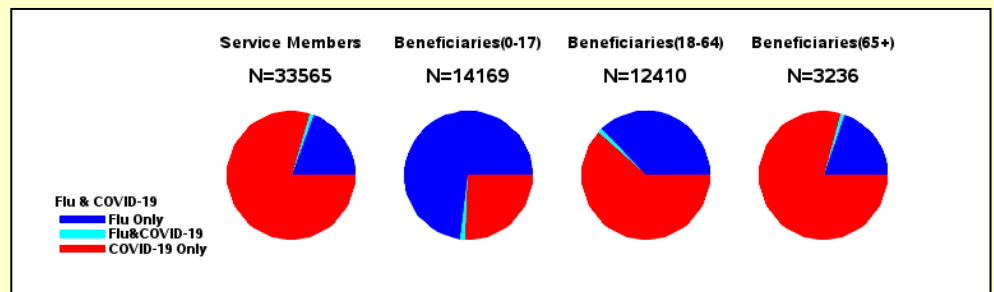
## Number and Distribution of Influenza Positive Specimens since week 40, by Beneficiary Status and Serotype

- The number of laboratory-confirmed influenza positive specimens for the season to date was highest among beneficiaries (0-17 years), 10,526 cases, followed by service members, 6,873 cases.
- Among subtyped specimens, influenza A (H3N2) has predominated.

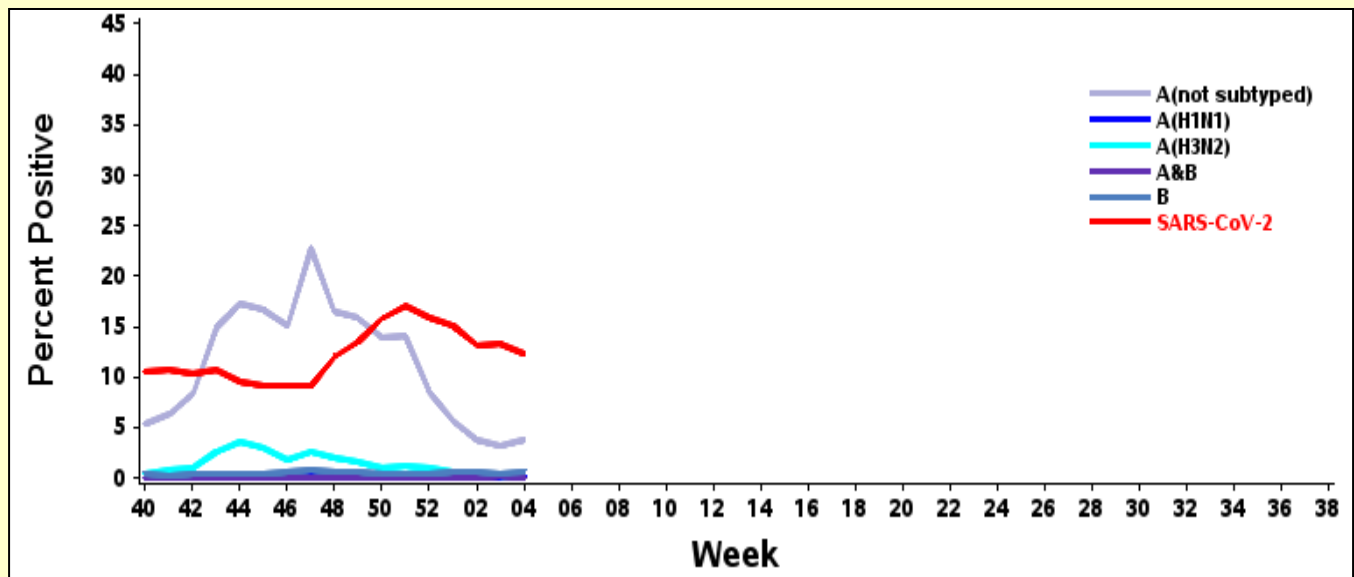


## Number and Distribution of Influenza Positive Specimens and COVID-19 Cases since week 40, by Beneficiary Status

- COVID-19 cases predominated among all beneficiary categories, except among children, where influenza has predominated.



## Percent of Specimens Positive for Influenza (by Serotype) or SARS-CoV-2



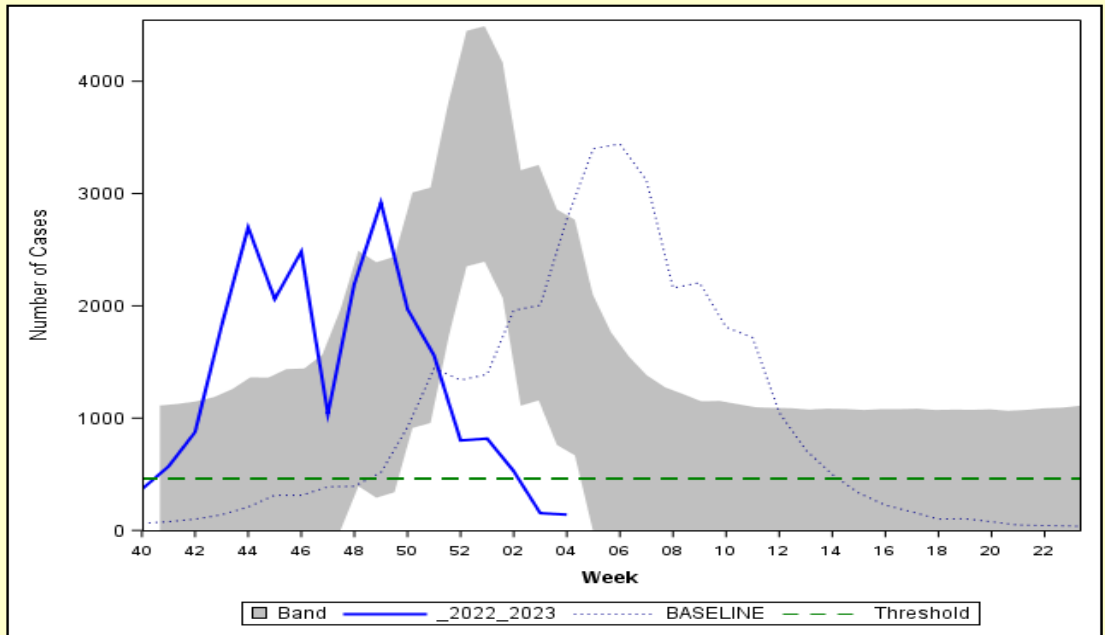
- The percent of specimens positive for SARS-CoV-2 decreased slightly, while the percent of specimens positive for influenza remained stable.

# Laboratory-Confirmed Influenza (2022-2023 Season: Week 4)

\*Reporting of laboratory data from MHS GENESIS sites is typically delayed by 2-3 weeks

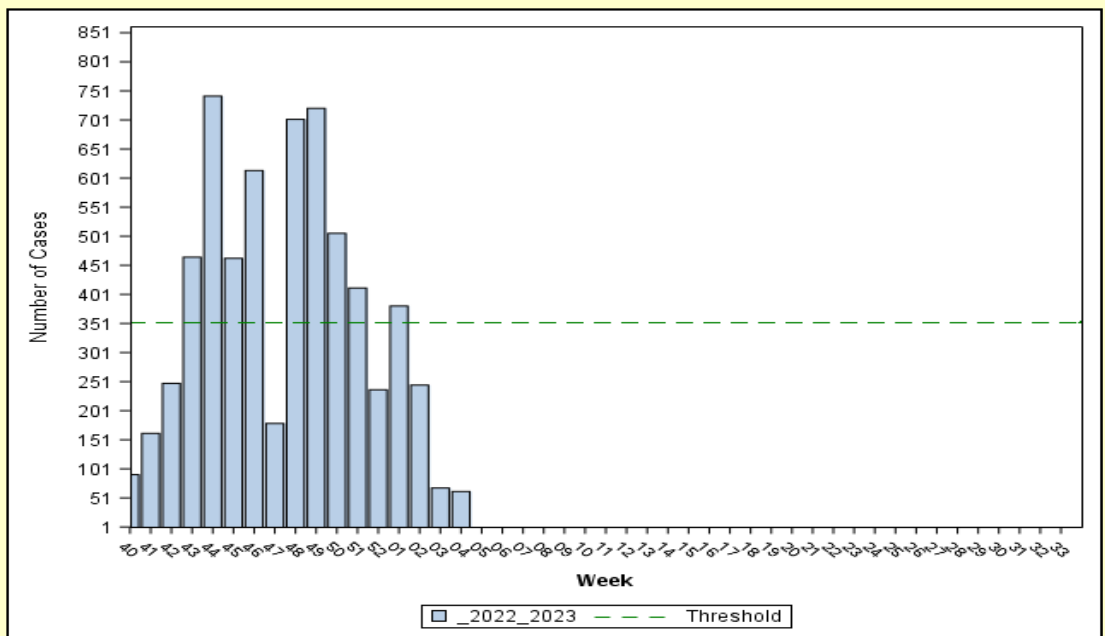
## Laboratory-Positive Influenza Cases, All Beneficiaries

- The number of laboratory-confirmed influenza cases among all beneficiaries remained below the baseline and threshold for week 4.
- Band indicates one standard deviation above and below seasonal baseline estimates. Threshold indicates two standard deviations above off-season average.



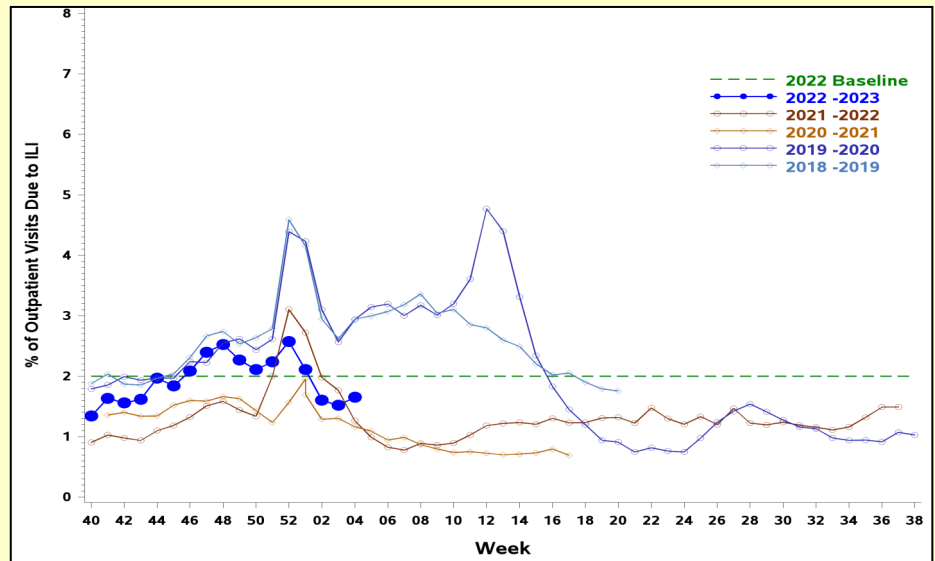
## Laboratory-Positive Influenza Cases, Active Component Service

- The number of active component service member laboratory-confirmed influenza cases was low and below the threshold.
- Threshold indicates two standard deviations above seasonal baseline estimates.



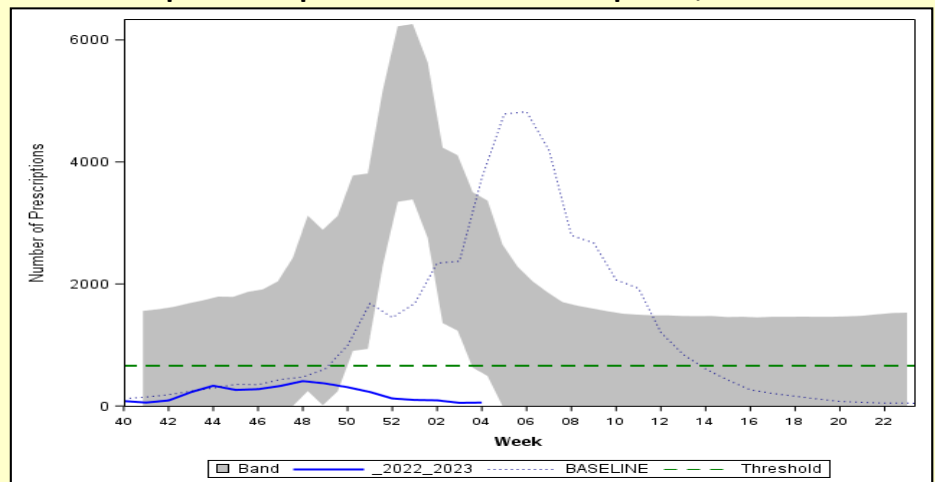
# ILI and Dispensed Antiviral Prescriptions (2022-2023 Season: Week 4)

**Percent of Outpatient Visits Due to ILI:  
Service Members, 2018-2019 to 2022-2023 Seasons**



- The percentage of outpatient visits due to ILI increased slightly for week 4 and was higher than the two previous seasons.

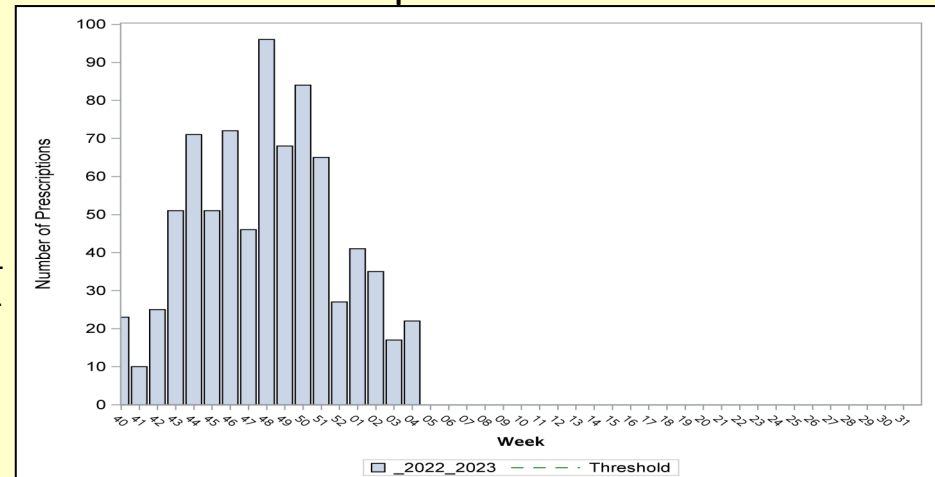
**Influenza-Specific Dispensed Antiviral Prescriptions, All Beneficiaries**



- The number of influenza-specific dispensed antiviral prescriptions among all beneficiaries was low and below the baseline and threshold for week 4.
- Band indicates one standard deviation above and below seasonal baseline estimates. Threshold indicates two standard deviations above off-season average.

**Influenza-Specific Dispensed Antiviral Prescriptions:**

**Active Component Service Members**

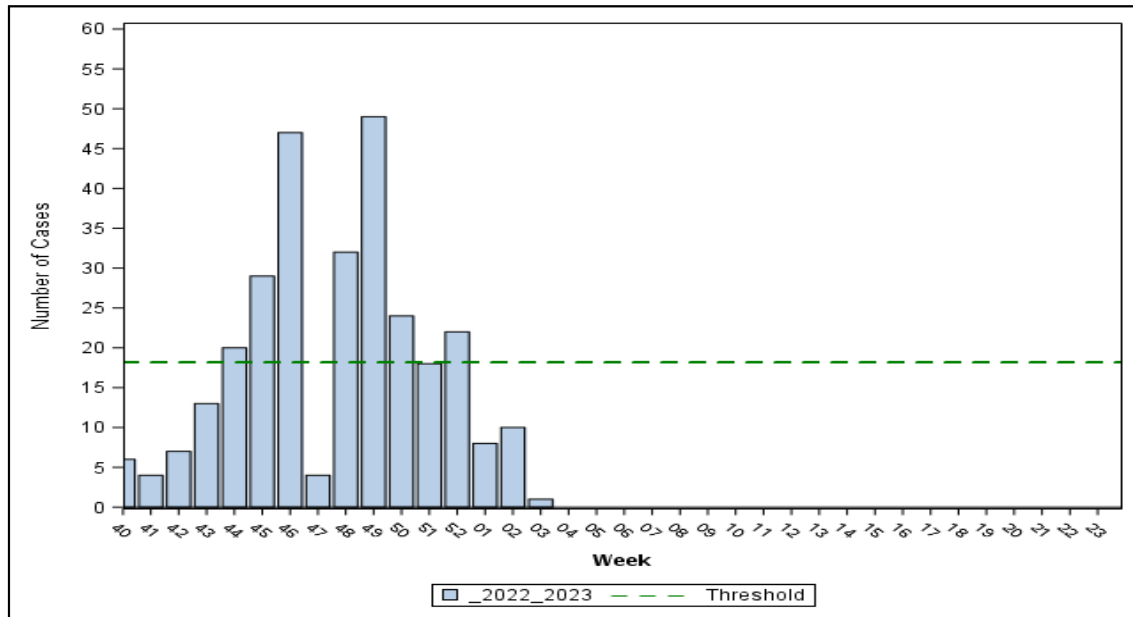


- The number of influenza-specific dispensed antiviral prescriptions among active component service members was low for week 4.
- Threshold indicates two standard deviation above the overall weighted average during the season. However, there is not enough data for the season to calculate the threshold for this metric.

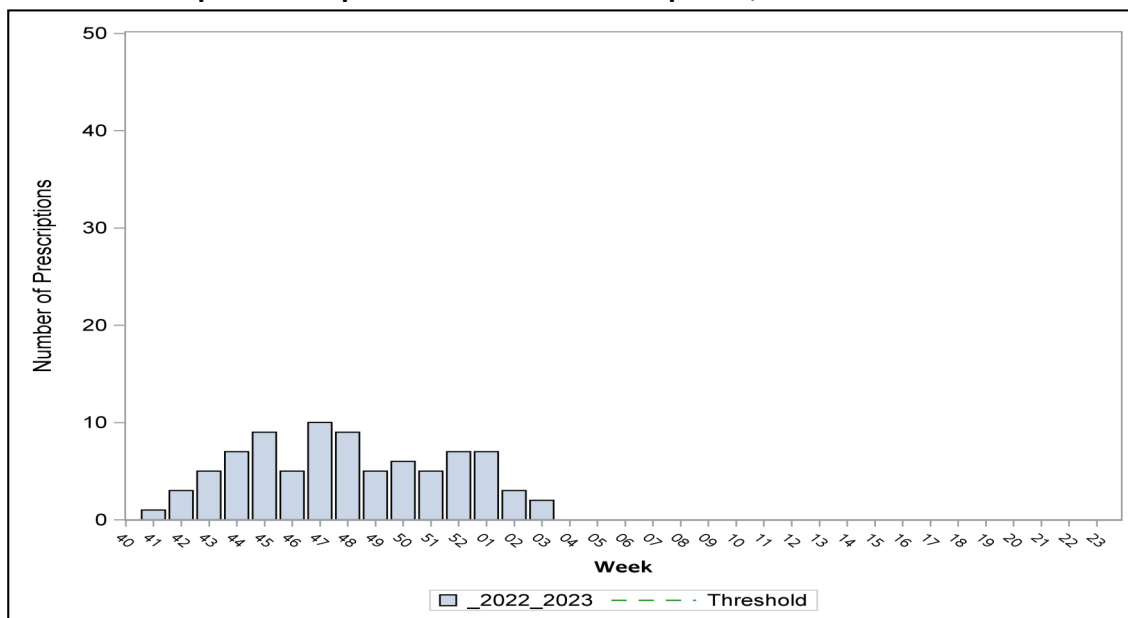
## Severity: Hospitalized Influenza Metrics (2022-2023 Season: Week 4)

- No new laboratory-confirmed influenza hospitalizations were reported during week 4, but 12 additional hospitalizations were reported for previous weeks (Season totals: 288; 23 service members and 265 other beneficiaries).
- No inpatient influenza-specific antiviral prescriptions were reported during week 4.
- Thresholds indicate one standard deviation above the overall weighted average during the season. However, there is not enough data for the season to calculate the threshold for the influenza-specific antiviral prescriptions metric.

### Hospitalized Laboratory-Positive Influenza Cases, All Beneficiaries



### Inpatient Dispensed Antivirals Prescriptions, All Beneficiaries

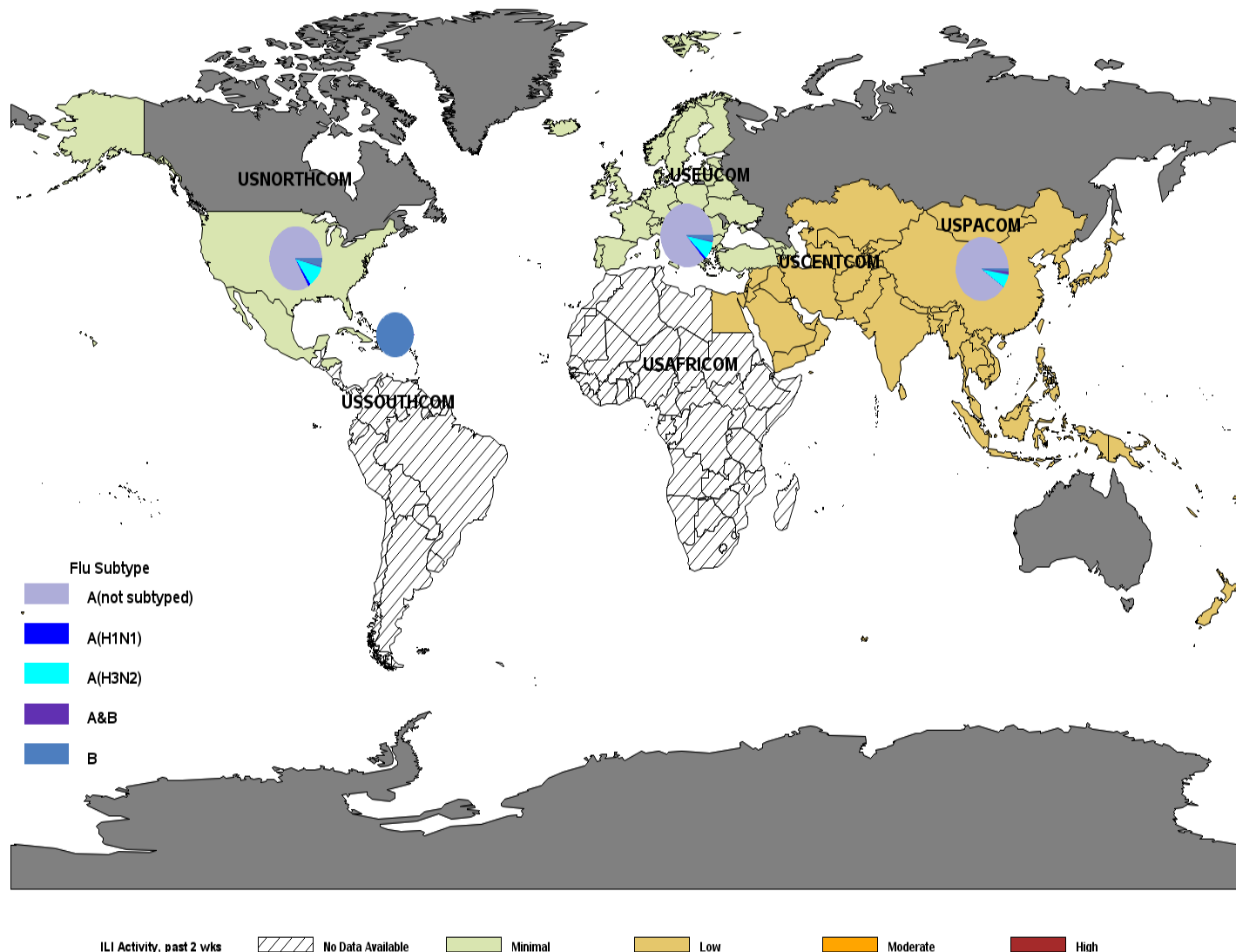


# Influenza Activity: Geographic Combatant Command

(2022-2023 Season: Week 4)

- USNORTHCOM: ILI activity was minimal. The majority of laboratory-confirmed influenza cases have been Influenza A (not sub-typed) and A(H3N2).
- USEUCOM: ILI activity was minimal. The majority of laboratory-confirmed influenza cases have been Influenza A (not sub-typed) and A(H3N2).
- USINDOPACOM: ILI activity was low. The majority of laboratory-confirmed influenza cases have been Influenza A (not sub-typed) and A(H3N2).
- USSOUTHCOM: ILI activity was minimal. One specimen has tested positive for influenza this season (Influenza B).
- USCENTCOM: ILI activity was low.

## ILI Activity (Service Members) and Laboratory-Confirmed Influenza (All Beneficiaries)

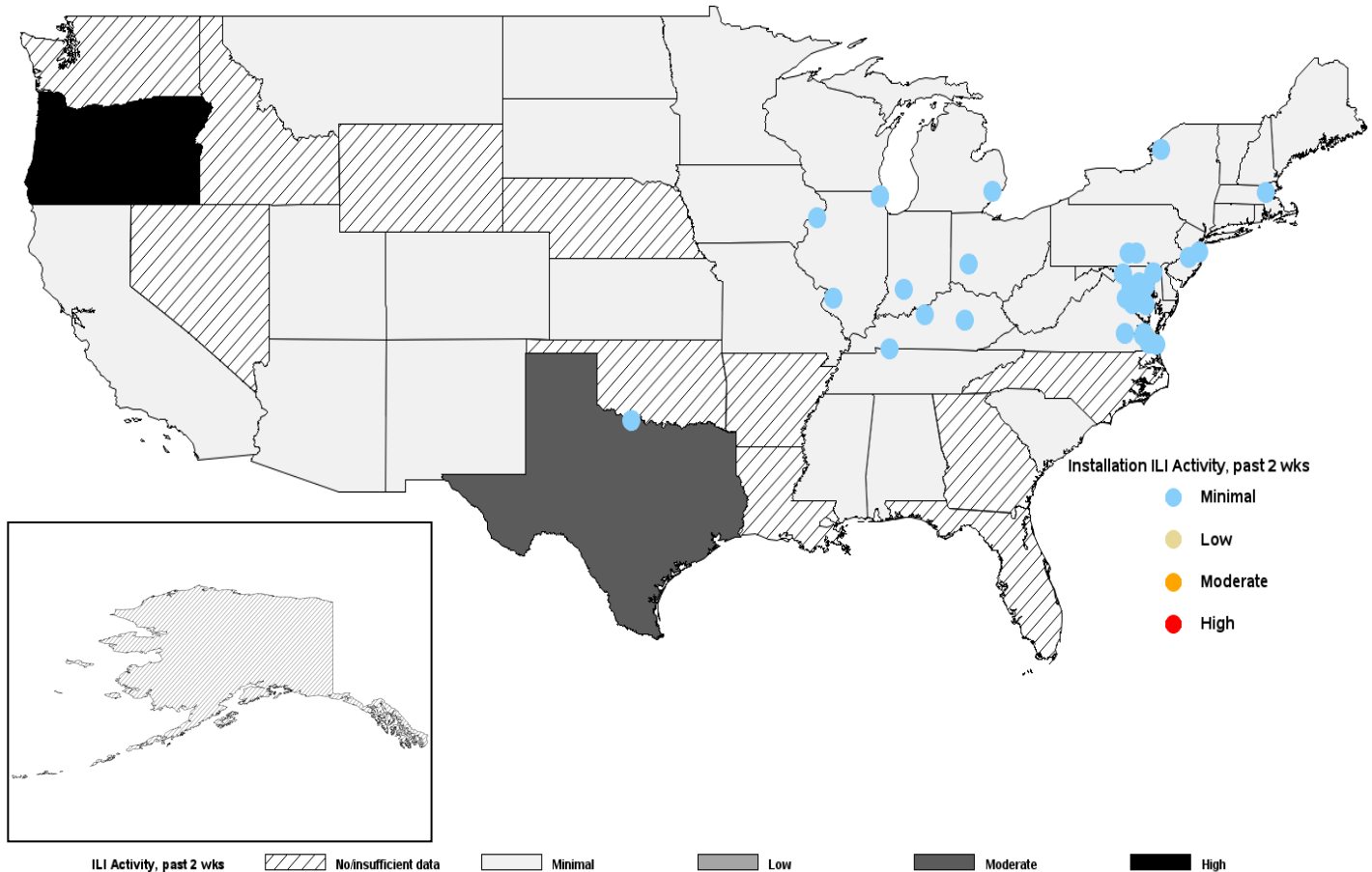


\*Locations colored in dark gray have no service member medical encounter data.

# Influenza Activity: USNORTHCOM (2022-2023 Season: Week 4)

- All installations with available data had minimal to low ILI activity during week 4.
- Most states with available data had minimal to low ILI activity. However, Texas had moderate activity and Oregon had high activity.
- Due to delays in receiving MHS GENESIS data, installations using MHS GENESIS will not have 2-week ILI activity data.
- State level data includes both Military Treatment Facility (MTF) and outsourced care. Therefore, state activity levels may differ from the installation level data.
- Installation-level laboratory-confirmed influenza and COVID-19 case data can be found on pages 14-19 of the report.

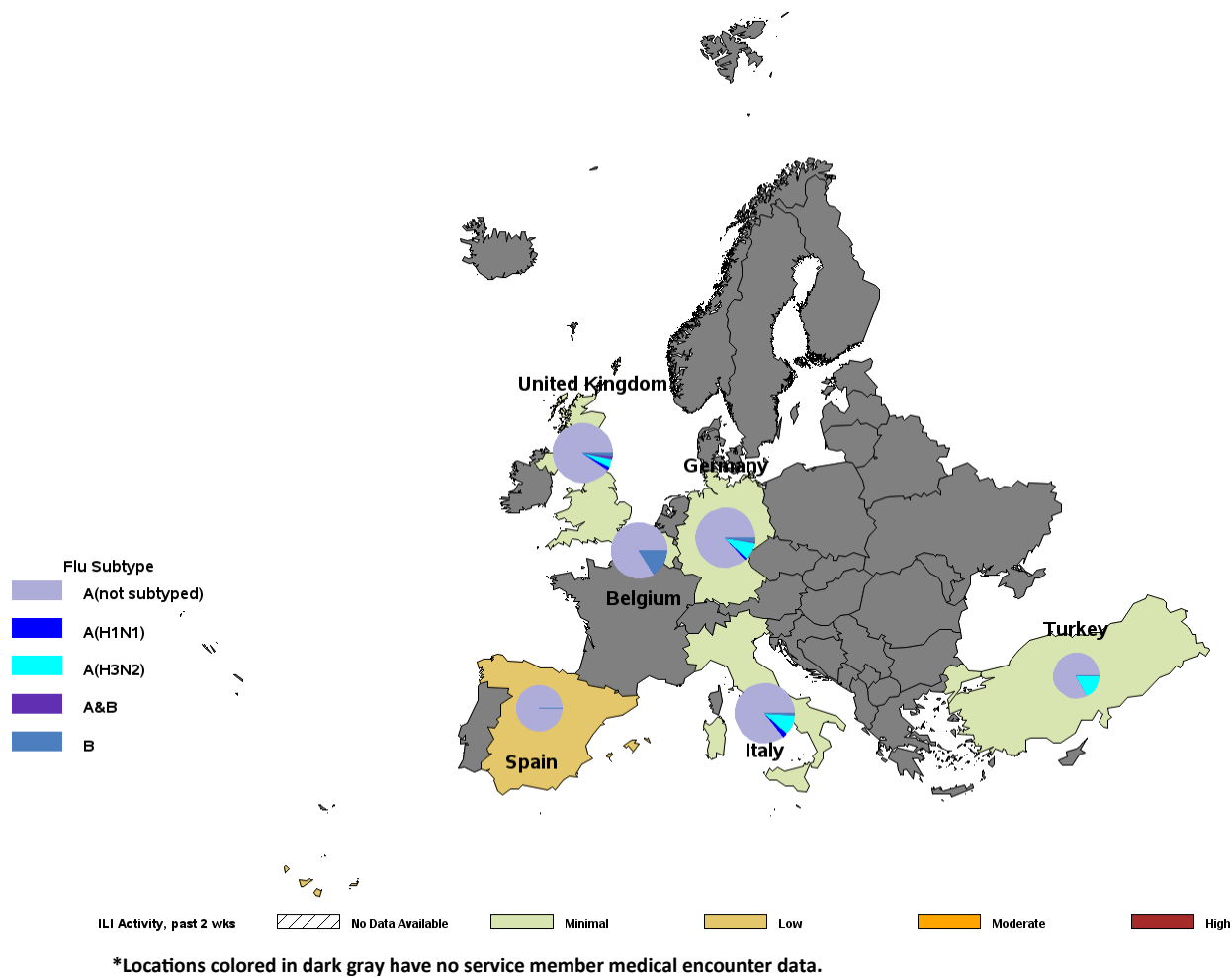
## ILI Activity (Service Members) by State and Installation



# Influenza and COVID-19 Activity: USEUCOM (2022-2023 Season: Week 4)

- ILI activity was minimal to low in all countries with available data.
- The majority of laboratory-confirmed influenza cases for USEUCOM have been influenza A (not subtyped). Among subtyped specimens, A(H3N2) has predominated.
- Installation-level laboratory-confirmed influenza and COVID-19 case data for USEUCOM can be found on page 9 of the report.

## ILI Activity (Service Members) and Laboratory-Confirmed Influenza (All Beneficiaries)





# Confirmed Influenza and COVID-19: USEUCOM (2022-2023 Season: Week 4)

## Laboratory-Confirmed Influenza by Installation (All Beneficiaries)

| Country        | Location              | Service | A (not sub-typed) |        | A (H1N1) |        | A (H3N2) |        | A & B |        | B     |        | Total positive | Total tested | % Positive | Change from past 2 weeks |
|----------------|-----------------------|---------|-------------------|--------|----------|--------|----------|--------|-------|--------|-------|--------|----------------|--------------|------------|--------------------------|
|                |                       |         | 2 wks             | Season | 2 wks    | Season | 2 wks    | Season | 2 wks | Season | 2 wks | Season | 2 wks          | 2 wks        | 2 wks      |                          |
| Belgium        | Shape                 | A       | 2                 | 31     | 0        | 0      | 0        | 0      | 0     | 0      | 1     | 7      | 3              | 53           | 6          | -                        |
| Germany        | Barton Barracks       | A       | 0                 | 0      | 0        | 0      | 0        | 0      | 0     | 0      | 0     | 0      | 0              | 0            | 0          | =                        |
| Germany        | Landstuhl RMC         | A       | 15                | 569    | 0        | 3      | 0        | 27     | 0     | 1      | 0     | 9      | 15             | 304          | 5          | -                        |
| Germany        | Patch Barracks        | A       | 0                 | 0      | 0        | 0      | 0        | 0      | 0     | 0      | 0     | 0      | 0              | 0            | 0          | =                        |
| Germany        | Ramstein AB           | F       | 0                 | 8      | 0        | 4      | 1        | 32     | 0     | 0      | 0     | 1      | 1              | 21           | 5          | -                        |
| Germany        | Spangdahlem AB        | F       | 0                 | 3      | 0        | 0      | 0        | 4      | 0     | 0      | 0     | 0      | 0              | 5            | 0          | =                        |
| Germany        | USAG Bavaria          | A       | 1                 | 201    | 0        | 0      | 0        | 3      | 0     | 2      | 0     | 5      | 1              | 59           | 2          | +                        |
| Germany        | USAG Hohenfels/Amberg | A       | 1                 | 18     | 0        | 0      | 0        | 0      | 0     | 2      | 1     | 1      | 2              | 9            | 22         | +                        |
| Germany        | USAG Kaiserslautern   | A       | 0                 | 4      | 0        | 0      | 0        | 0      | 0     | 0      | 0     | 0      | 0              | 3            | 0          | =                        |
| Germany        | USAG Katterbach       | A       | 1                 | 9      | 0        | 1      | 0        | 3      | 0     | 0      | 0     | 0      | 1              | 3            | 33         | -                        |
| Germany        | USAG Wiesbaden        | A       | 0                 | 4      | 0        | 1      | 0        | 24     | 0     | 0      | 0     | 3      | 0              | 7            | 0          | =                        |
| Italy          | Aviano AB             | F       | 0                 | 13     | 0        | 0      | 0        | 10     | 0     | 0      | 0     | 0      | 0              | 8            | 0          | =                        |
| Italy          | NAS Sigonella         | N       | 1                 | 5      | 0        | 5      | 1        | 15     | 0     | 0      | 0     | 1      | 2              | 15           | 13         | +                        |
| Italy          | NSA Naples            | N       | 11                | 104    | 0        | 0      | 0        | 0      | 0     | 0      | 0     | 1      | 11             | 59           | 19         | -                        |
| Italy          | USAG Italy            | A       | 4                 | 117    | 0        | 1      | 0        | 4      | 0     | 0      | 0     | 1      | 4              | 60           | 7          | =                        |
| Spain          | NS Rota               | N       | 2                 | 15     | 0        | 0      | 0        | 0      | 0     | 0      | 0     | 0      | 2              | 16           | 13         | +                        |
| Turkey         | Incirlık AB           | F       | 0                 | 5      | 0        | 0      | 0        | 1      | 0     | 0      | 0     | 0      | 0              | 1            | 0          | =                        |
| United Kingdom | RAF Alconbury         | F       | 0                 | 5      | 0        | 0      | 0        | 0      | 0     | 0      | 0     | 0      | 0              | 0            | 0          | =                        |
| United Kingdom | RAF Croughton         | F       | 0                 | 2      | 0        | 0      | 0        | 0      | 0     | 0      | 0     | 0      | 0              | 0            | 0          | =                        |
| United Kingdom | RAF Lakenheath        | F       | 2                 | 98     | 0        | 2      | 0        | 5      | 0     | 2      | 0     | 2      | 2              | 31           | 6          | -                        |

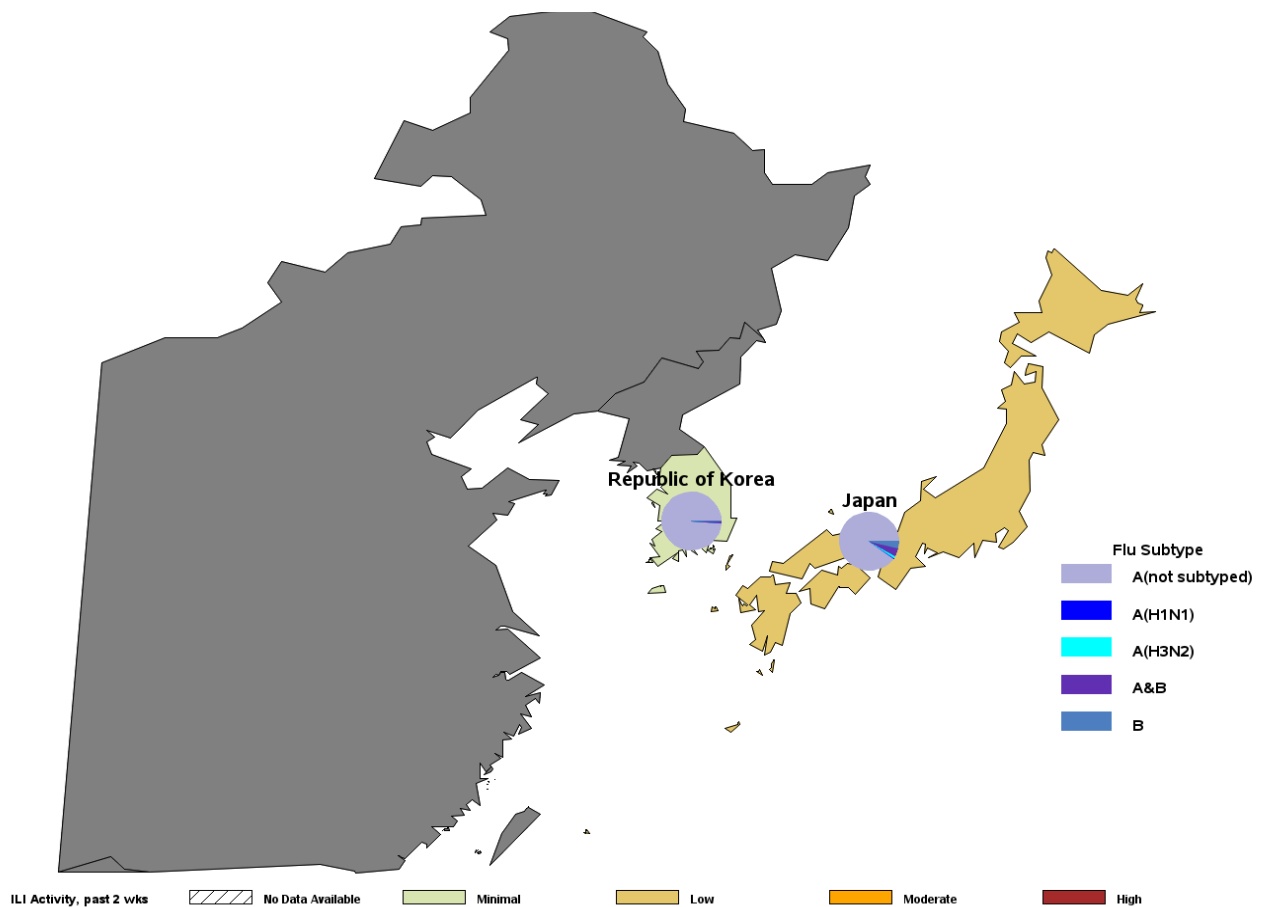
## COVID-19 Cases Since Week 40 by Installation (All Beneficiaries)

| Country        | Location              | Service | COVID-19 |               | Change from past 2 weeks |
|----------------|-----------------------|---------|----------|---------------|--------------------------|
|                |                       |         | 2 wks    | Since week 40 |                          |
| Belgium        | Shape                 | A       | 0        | 20            | =                        |
| Germany        | Barton Barracks       | A       | 0        | 0             | =                        |
| Germany        | Landstuhl RMC         | A       | 81       | 904           | +                        |
| Germany        | Patch Barracks        | A       | 0        | 0             | =                        |
| Germany        | Ramstein AB           | F       | 4        | 39            | =                        |
| Germany        | Spangdahlem AB        | F       | 1        | 111           | -                        |
| Germany        | USAG Bavaria          | A       | 27       | 383           | -                        |
| Germany        | USAG Hohenfels/Amberg | A       | 1        | 10            | =                        |
| Germany        | USAG Kaiserslautern   | A       | 0        | 3             | =                        |
| Germany        | USAG Katterbach       | A       | 5        | 141           | +                        |
| Germany        | USAG Wiesbaden        | A       | 5        | 136           | -                        |
| Italy          | Aviano AB             | F       | 0        | 238           | =                        |
| Italy          | NAS Sigonella         | N       | 4        | 66            | -                        |
| Italy          | NSA Naples            | N       | 7        | 141           | +                        |
| Italy          | USAG Italy            | A       | 16       | 200           | -                        |
| Spain          | NS Rota               | N       | 0        | 57            | =                        |
| Turkey         | Incirlık AB           | F       | 2        | 46            | -                        |
| United Kingdom | RAF Alconbury         | F       | 0        | 4             | =                        |
| United Kingdom | RAF Croughton         | F       | 0        | 5             | =                        |
| United Kingdom | RAF Lakenheath        | F       | 16       | 227           | +                        |

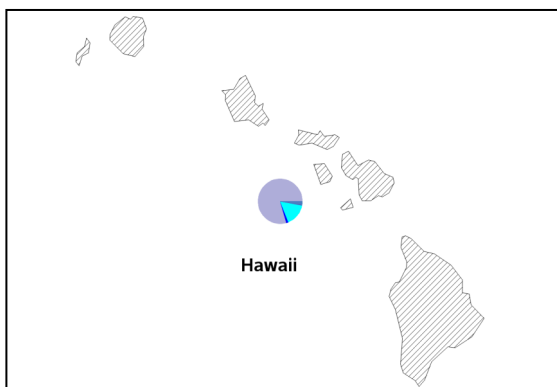
# Influenza Activity: USINDOPACOM (2022-2023 Season: Week 4)

- ILI activity was minimal to low in all countries with available data.
- The majority of laboratory-confirmed influenza cases for USINDOPACOM have been influenza A (not subtyped). Among sub-typed specimens, A(H3N2) has predominated.
- Installation-level laboratory-confirmed influenza and COVID-19 case data for USINDOPACOM can be found on page 11 of the report.

## ILI Activity (Service Members) and Laboratory-Confirmed Influenza (All Beneficiaries)



\*Locations colored in dark gray have no service member medical encounter data.



# Influenza Activity: USINDOPACOM (2022-2023 Season: Week 4)

## Laboratory-Confirmed Influenza by Installation (All Beneficiaries)

| Country            | Location               | Service | A (not sub-typed) |        | A (H1N1) |        | A (H3N2) |        | A & B |        | B     |        | Total positive | Total tested | % Positive | Change from past 2 weeks |
|--------------------|------------------------|---------|-------------------|--------|----------|--------|----------|--------|-------|--------|-------|--------|----------------|--------------|------------|--------------------------|
|                    |                        |         | 2 wks             | Season | 2 wks    | Season | 2 wks    | Season | 2 wks | Season | 2 wks | Season | 2 wks          | 2 wks        | 2 wks      |                          |
| Guam               | JB Andersen            | J       | 3                 | 152    | 0        | 1      | 1        | 49     | 0     | 0      | 0     | 1      | 4              | 149          | 3          | =                        |
| Japan              | CFA Okinawa            | N       | 5                 | 28     | 0        | 0      | 0        | 0      | 0     | 2      | 0     | 3      | 5              | 79           | 6          | +                        |
| Japan              | CFA Yokosuka           | N       | 4                 | 18     | 0        | 0      | 0        | 0      | 1     | 3      | 1     | 2      | 6              | 36           | 17         | +                        |
| Japan              | Camp Foster            | N       | 0                 | 3      | 0        | 0      | 0        | 0      | 0     | 0      | 0     | 0      | 0              | 3            | 0          | =                        |
| Japan              | Camp Fuji              | N       | 0                 | 0      | 0        | 0      | 0        | 0      | 0     | 0      | 0     | 0      | 0              | 0            | 0          | =                        |
| Japan              | Camp Zama              | A       | 6                 | 9      | 0        | 0      | 0        | 0      | 0     | 0      | 0     | 0      | 6              | 83           | 7          | +                        |
| Japan              | Kadena AB              | F       | 1                 | 3      | 0        | 0      | 0        | 1      | 1     | 1      | 0     | 0      | 2              | 17           | 12         | -                        |
| Japan              | MCAS Futenma           | N       | 0                 | 0      | 0        | 0      | 0        | 0      | 0     | 0      | 0     | 0      | 0              | 0            | 0          | =                        |
| Japan              | MCAS Iwakuni           | N       | 4                 | 21     | 0        | 0      | 0        | 0      | 0     | 1      | 0     | 1      | 4              | 31           | 13         | +                        |
| Japan              | Misawa AB              | F       | 14                | 19     | 0        | 0      | 0        | 0      | 0     | 0      | 0     | 0      | 14             | 67           | 21         | +                        |
| Japan              | NAF Atsugi             | N       | 4                 | 13     | 0        | 0      | 0        | 0      | 0     | 0      | 0     | 0      | 4              | 12           | 33         | -                        |
| Japan              | NB Okinawa             | N       | 11                | 32     | 0        | 0      | 0        | 0      | 0     | 1      | 0     | 0      | 11             | 68           | 16         | +                        |
| Japan              | USFA Sasebo            | N       | 2                 | 4      | 0        | 0      | 0        | 0      | 0     | 0      | 0     | 0      | 2              | 13           | 15         | +                        |
| Japan              | Yokota AB              | F       | 2                 | 11     | 0        | 0      | 0        | 1      | 0     | 0      | 0     | 1      | 2              | 19           | 11         | +                        |
| Korea, Republic of | CFA Chinhae            | N       | 0                 | 0      | 0        | 0      | 0        | 0      | 0     | 0      | 0     | 0      | 0              | 0            | 0          | =                        |
| Korea, Republic of | Camp Casey             | A       | 0                 | 1      | 0        | 0      | 0        | 0      | 0     | 0      | 0     | 0      | 0              | 1            | 0          | =                        |
| Korea, Republic of | Camp Humphreys         | A       | 0                 | 6      | 0        | 0      | 0        | 0      | 0     | 0      | 0     | 0      | 0              | 1            | 0          | =                        |
| Korea, Republic of | Camp Walker            | A       | 10                | 42     | 0        | 0      | 0        | 0      | 0     | 2      | 0     | 1      | 10             | 48           | 21         | -                        |
| Korea, Republic of | Kunsan AB              | F       | 14                | 41     | 0        | 0      | 0        | 0      | 0     | 0      | 0     | 0      | 14             | 56           | 25         | +                        |
| Korea, Republic of | Osan AB                | F       | 12                | 125    | 0        | 0      | 0        | 0      | 0     | 0      | 0     | 0      | 12             | 175          | 7          | +                        |
| Korea, Republic of | Yongsan Garrison       | A       | 16                | 98     | 0        | 0      | 0        | 0      | 0     | 1      | 0     | 0      | 16             | 55           | 29         | -                        |
| United States      | Camp H M Smith         | N       | 0                 | 0      | 0        | 0      | 0        | 0      | 0     | 0      | 0     | 0      | 0              | 0            | 0          | =                        |
| United States      | Ft Shafter             | A       | 0                 | 140    | 0        | 4      | 0        | 49     | 0     | 0      | 0     | 0      | 0              | 39           | 0          | =                        |
| United States      | JB Pearl Harbor-Hickam | J       | 0                 | 15     | 0        | 1      | 0        | 1      | 0     | 1      | 0     | 5      | 0              | 0            | 0          | =                        |
| United States      | MCB Hawaii             | N       | 0                 | 15     | 0        | 0      | 0        | 0      | 0     | 0      | 0     | 2      | 0              | 0            | 0          | =                        |
| United States      | Schofield Barracks     | A       | 0                 | 78     | 0        | 0      | 0        | 0      | 0     | 0      | 0     | 1      | 0              | 0            | 0          | =                        |

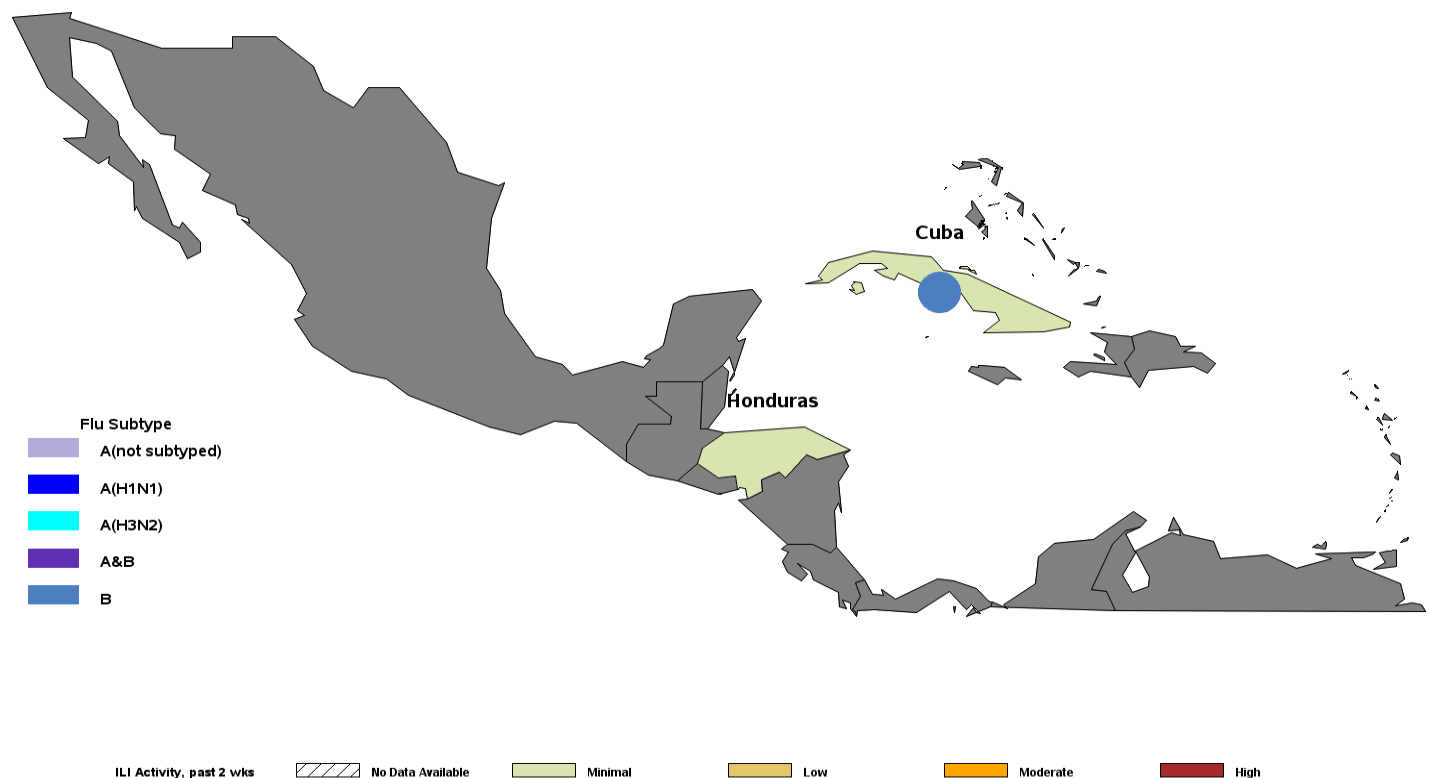
## COVID-19 Cases Since Week 40 by Installation (All Beneficiaries)

| Country            | Location               | Service | COVID-19 |               | Change from past 2 weeks |
|--------------------|------------------------|---------|----------|---------------|--------------------------|
|                    |                        |         | 2 wks    | Since week 40 |                          |
| Guam               | JB Andersen            | J       | 52       | 344           | +                        |
| Japan              | CFA Okinawa            | N       | 4        | 100           | -                        |
| Japan              | CFA Yokosuka           | N       | 11       | 72            | -                        |
| Japan              | Camp Foster            | N       | 3        | 22            | -                        |
| Japan              | Camp Fuji              | N       | 0        | 16            | =                        |
| Japan              | Camp Zama              | A       | 15       | 181           | -                        |
| Japan              | Kadena AB              | F       | 3        | 29            | =                        |
| Japan              | MCAS Futenma           | N       | 0        | 11            | =                        |
| Japan              | MCAS Iwakuni           | N       | 15       | 70            | -                        |
| Japan              | Misawa AB              | F       | 7        | 77            | =                        |
| Japan              | NAF Atsugi             | N       | 14       | 46            | -                        |
| Japan              | NB Okinawa             | N       | 12       | 144           | -                        |
| Japan              | USFA Sasebo            | N       | 11       | 70            | +                        |
| Japan              | Yokota AB              | F       | 4        | 143           | -                        |
| Korea, Republic of | CFA Chinhae            | N       | 0        | 0             | =                        |
| Korea, Republic of | Camp Casey             | A       | 0        | 24            | =                        |
| Korea, Republic of | Camp Humphreys         | A       | 1        | 12            | -                        |
| Korea, Republic of | Camp Walker            | A       | 6        | 140           | -                        |
| Korea, Republic of | Kunsan AB              | F       | 16       | 119           | -                        |
| Korea, Republic of | Osan AB                | F       | 39       | 328           | +                        |
| Korea, Republic of | Yongsan Garrison       | A       | 56       | 685           | -                        |
| United States      | Camp H M Smith         | N       | 0        | 0             | =                        |
| United States      | Ft Shafter             | A       | 123      | 760           | -                        |
| United States      | JB Pearl Harbor-Hickam | J       | 19       | 194           | -                        |
| United States      | MCB Hawaii             | N       | 0        | 28            | =                        |
| United States      | Schofield Barracks     | A       | 0        | 53            | =                        |

# Influenza Activity: USSOUTHCOM (2022-2023 Season: Week 4)

- ILI activity was minimal in Cuba and Honduras.
- One laboratory-confirmed influenza case has been reported in Cuba for the 2022-2023 season (Influenza B).

## ILI Activity (Service Members) and Laboratory-Confirmed Influenza (All Beneficiaries)



\*Locations colored in dark gray have no service member medical encounter data.

## Laboratory-Confirmed Influenza by Installation (All Beneficiaries)

| Country | Location       | Service | A (not sub-typed) |        | A (H1N1) |        | A (H3N2) |        | A & B |        | B     |        | Total posi-tive | Total tested | % Positive | Change from  |
|---------|----------------|---------|-------------------|--------|----------|--------|----------|--------|-------|--------|-------|--------|-----------------|--------------|------------|--------------|
|         |                |         | 2 wks             | Season | 2 wks    | Season | 2 wks    | Season | 2 wks | Season | 2 wks | Season | 2 wks           | 2 wks        | 2 wks      | past 2 weeks |
| Cuba    | Guantanamo Bay | N       | 0                 | 0      | 0        | 0      | 0        | 0      | 0     | 0      | 0     | 1      | 0               | 5            | 0          | =            |

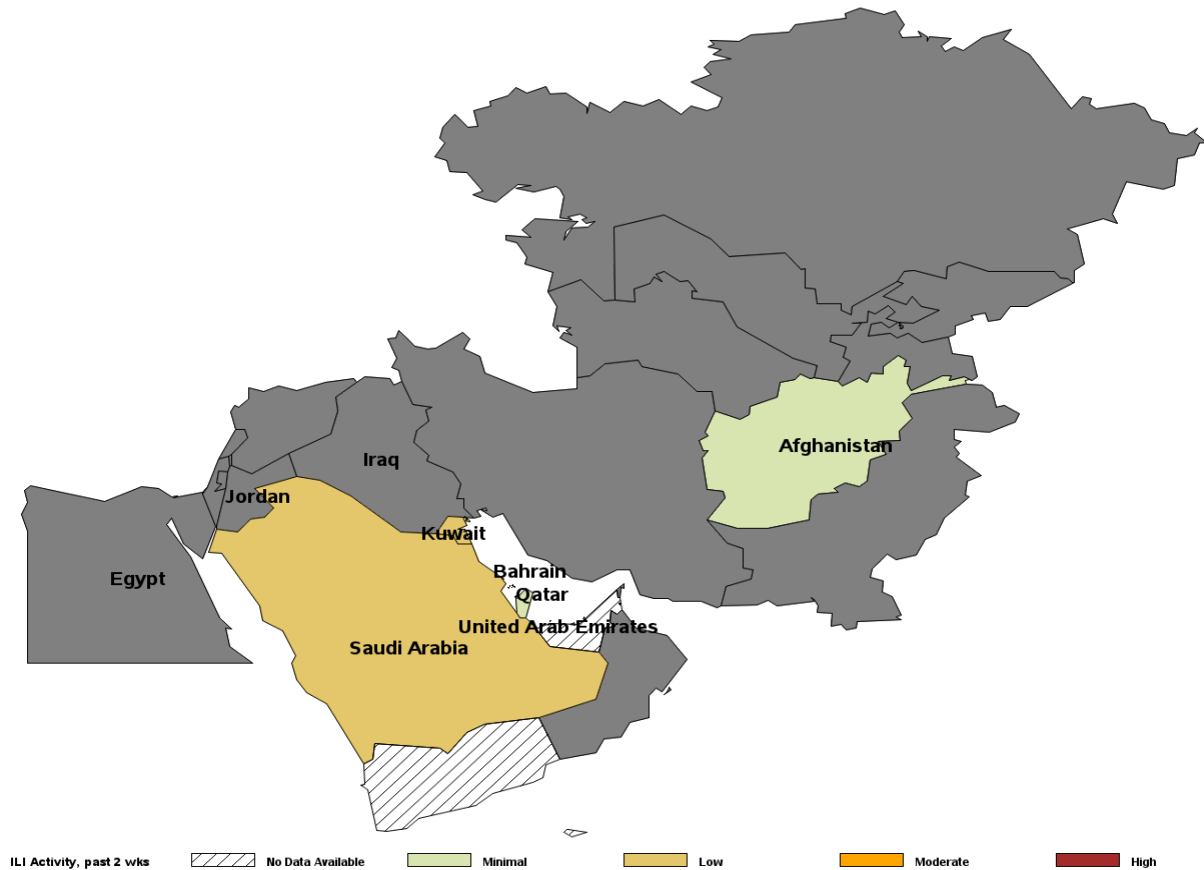
## COVID-19 Cases Since Week 40 by Installation (All Beneficiaries)

| Country | Location       | Service | COVID-19 |               | Change from last report |
|---------|----------------|---------|----------|---------------|-------------------------|
|         |                |         | 2 wks    | Since week 40 |                         |
| Cuba    | Guantanamo Bay | N       | 6        | 27            | =                       |

# Influenza Activity: USCENTCOM (2022-2023 Season: Week 4)

- ILI activity was minimal to low in all countries with available data.

## ILI Activity (Service Members)



\*Locations colored in dark gray have no service member medical encounter data.

# USNORTHCOM Laboratory-Confirmed Influenza

(2022-2023 Season: Week 4)

## Laboratory-Confirmed Influenza (All Beneficiaries) by Installation Alaska through Georgia

\*Reporting of laboratory data from MHS GENESIS sites is typically delayed by 2-3 weeks

| State | Location                  | Service | A (not subtyped) |        | A (H1N1) |        | A (H3N2) |        | A & B |        | B     |        | Total positive | Total tested | % Positive | Change from past 2 weeks |
|-------|---------------------------|---------|------------------|--------|----------|--------|----------|--------|-------|--------|-------|--------|----------------|--------------|------------|--------------------------|
|       |                           |         | 2 wks            | Season | 2 wks    | Season | 2 wks    | Season | 2 wks | Season | 2 wks | Season | 2 wks          | 2 wks        | 2 wks      |                          |
| AK    | Eielson AFB               | F       | 0                | 18     | 0        | 0      | 0        | 0      | 0     | 0      | 0     | 0      | 0              | 0            | 0          | =                        |
| AK    | Ft Greely                 | A       | 0                | 11     | 0        | 0      | 0        | 0      | 0     | 0      | 0     | 0      | 0              | 0            | 0          | =                        |
| AK    | Ft Wainwright             | A       | 0                | 170    | 0        | 0      | 0        | 0      | 0     | 1      | 0     | 2      | 0              | 5            | 0          | =                        |
| AK    | JB Elmendorf-Richardson   | J       | 0                | 182    | 0        | 3      | 0        | 23     | 0     | 0      | 0     | 0      | 0              | 14           | 0          | =                        |
| AL    | Ft Rucker                 | A       | 0                | 27     | 0        | 0      | 0        | 0      | 0     | 0      | 0     | 13     | 0              | 0            | 0          | =                        |
| AL    | Maxwell AFB               | F       | 0                | 70     | 0        | 0      | 0        | 0      | 0     | 0      | 0     | 0      | 0              | 0            | 0          | =                        |
| AL    | Redstone Arsenal          | A       | 0                | 18     | 0        | 0      | 0        | 0      | 0     | 0      | 0     | 15     | 0              | 0            | 0          | =                        |
| AR    | Little Rock AFB           | F       | 0                | 49     | 0        | 0      | 0        | 0      | 0     | 0      | 0     | 0      | 0              | 0            | 0          | =                        |
| AZ    | Davis-Monthan AFB         | F       | 0                | 0      | 0        | 0      | 0        | 0      | 0     | 0      | 0     | 0      | 0              | 0            | 0          | =                        |
| AZ    | Ft Huachuca               | A       | 0                | 40     | 0        | 0      | 0        | 0      | 0     | 0      | 0     | 0      | 0              | 0            | 0          | =                        |
| AZ    | Luke AFB                  | F       | 0                | 46     | 0        | 0      | 0        | 0      | 0     | 0      | 0     | 0      | 0              | 0            | 0          | =                        |
| AZ    | MCAS Yuma                 | N       | 0                | 39     | 0        | 0      | 0        | 0      | 0     | 0      | 0     | 0      | 0              | 0            | 0          | =                        |
| CA    | Beale AFB                 | F       | 0                | 16     | 0        | 0      | 0        | 0      | 0     | 0      | 0     | 0      | 0              | 0            | 0          | =                        |
| CA    | Camp Pendleton            | N       | 1                | 522    | 0        | 0      | 1        | 0      | 0     | 0      | 1     | 1      | 1              | 43           | 2          | -                        |
| CA    | Edwards AFB               | F       | 0                | 3      | 0        | 0      | 0        | 0      | 0     | 0      | 0     | 0      | 0              | 0            | 0          | =                        |
| CA    | Ft Irwin                  | A       | 0                | 135    | 0        | 0      | 0        | 0      | 0     | 0      | 0     | 0      | 0              | 5            | 0          | =                        |
| CA    | Los Angeles AFB           | F       | 0                | 1      | 0        | 0      | 0        | 0      | 0     | 0      | 0     | 0      | 0              | 0            | 0          | =                        |
| CA    | MBHC Eastlake             | N       | 0                | 0      | 0        | 0      | 0        | 0      | 0     | 0      | 0     | 0      | 0              | 0            | 0          | =                        |
| CA    | NAH Lemoore               | N       | 0                | 6      | 0        | 4      | 0        | 46     | 0     | 0      | 0     | 1      | 0              | 0            | 0          | =                        |
| CA    | NB Coronado               | N       | 0                | 3      | 0        | 2      | 0        | 12     | 0     | 0      | 0     | 1      | 0              | 0            | 0          | =                        |
| CA    | NB San Diego              | N       | 0                | 42     | 0        | 29     | 0        | 600    | 0     | 0      | 0     | 5      | 0              | 43           | 0          | =                        |
| CA    | NV Ventura County         | N       | 0                | 14     | 0        | 0      | 0        | 0      | 0     | 0      | 0     | 1      | 0              | 0            | 0          | =                        |
| CA    | Travis AFB                | F       | 0                | 103    | 0        | 3      | 0        | 15     | 0     | 0      | 0     | 1      | 0              | 5            | 0          | =                        |
| CA    | Twentynine Palms          | N       | 0                | 77     | 0        | 0      | 0        | 1      | 0     | 0      | 0     | 1      | 0              | 7            | 0          | =                        |
| CA    | USAG Presidio of Monterey | A       | 0                | 4      | 0        | 1      | 0        | 14     | 0     | 0      | 0     | 0      | 0              | 0            | 0          | =                        |
| CA    | Vandenberg AFB            | F       | 0                | 27     | 0        | 0      | 0        | 0      | 0     | 0      | 0     | 0      | 0              | 0            | 0          | =                        |
| CO    | Buckley AFB               | F       | 0                | 15     | 0        | 0      | 0        | 0      | 0     | 0      | 0     | 0      | 0              | 0            | 0          | =                        |
| CO    | Ft Carson                 | A       | 2                | 526    | 0        | 0      | 0        | 0      | 0     | 4      | 0     | 26     | 2              | 29           | 7          | -                        |
| CO    | Peterson AFB              | F       | 0                | 51     | 0        | 0      | 0        | 0      | 0     | 0      | 0     | 0      | 0              | 0            | 0          | =                        |
| CO    | Schriever AFB             | F       | 0                | 4      | 0        | 0      | 0        | 0      | 0     | 0      | 0     | 0      | 0              | 0            | 0          | =                        |
| CO    | USAF Academy              | F       | 0                | 37     | 0        | 0      | 0        | 0      | 0     | 0      | 0     | 1      | 0              | 0            | 0          | =                        |
| CT    | NSB New London            | N       | 3                | 47     | 0        | 0      | 0        | 0      | 0     | 3      | 0     | 4      | 3              | 27           | 11         | -                        |
| DC    | JB Anacostia-Bolling      | F       | 0                | 10     | 0        | 0      | 0        | 12     | 0     | 0      | 0     | 0      | 0              | 38           | 0          | =                        |
| DC    | JB Myer-Henderson Hall    | A       | 0                | 0      | 0        | 0      | 0        | 0      | 0     | 0      | 0     | 0      | 0              | 1            | 0          | =                        |
| DC    | Pentagon                  | J       | 2                | 32     | 0        | 0      | 0        | 3      | 0     | 0      | 0     | 0      | 2              | 54           | 4          | -                        |
| DC    | Washington Navy Yard      | N       | 0                | 1      | 0        | 0      | 0        | 0      | 0     | 0      | 0     | 0      | 0              | 4            | 0          | =                        |
| DE    | Dover AFB                 | F       | 1                | 84     | 0        | 4      | 0        | 14     | 0     | 0      | 0     | 2      | 1              | 17           | 6          | -                        |
| FL    | Eglin AFB                 | J       | 0                | 177    | 0        | 0      | 0        | 6      | 0     | 0      | 0     | 0      | 0              | 2            | 0          | =                        |
| FL    | Hurlburt Field            | F       | 0                | 16     | 0        | 0      | 0        | 0      | 0     | 0      | 0     | 0      | 0              | 0            | 0          | =                        |
| FL    | Macdill AFB               | F       | 0                | 25     | 0        | 0      | 0        | 0      | 0     | 0      | 0     | 2      | 0              | 0            | 0          | =                        |
| FL    | NAS Jacksonville          | J       | 1                | 148    | 0        | 0      | 0        | 0      | 0     | 3      | 0     | 38     | 1              | 12           | 8          | -                        |
| FL    | NAS Key West              | J       | 0                | 3      | 0        | 0      | 0        | 0      | 0     | 0      | 0     | 15     | 0              | 0            | 0          | =                        |
| FL    | NAS Pensacola             | N       | 0                | 247    | 0        | 0      | 0        | 0      | 0     | 2      | 0     | 23     | 0              | 0            | 0          | =                        |
| FL    | NAS Whiting Field         | N       | 0                | 17     | 0        | 0      | 0        | 0      | 0     | 0      | 0     | 0      | 0              | 0            | 0          | =                        |
| FL    | NS Mayport                | J       | 0                | 12     | 0        | 0      | 0        | 0      | 0     | 0      | 0     | 4      | 0              | 0            | 0          | =                        |
| FL    | Patrick AFB               | F       | 0                | 24     | 0        | 0      | 0        | 0      | 0     | 0      | 0     | 0      | 0              | 0            | 0          | =                        |
| FL    | Tyndall AFB               | F       | 0                | 23     | 0        | 0      | 0        | 0      | 0     | 0      | 0     | 4      | 0              | 0            | 0          | =                        |
| GA    | Ft Benning                | A       | 0                | 293    | 0        | 0      | 0        | 0      | 0     | 0      | 0     | 9      | 0              | 11           | 0          | =                        |
| GA    | Ft Gordon                 | A       | 0                | 348    | 0        | 0      | 0        | 0      | 0     | 2      | 0     | 1      | 0              | 9            | 0          | =                        |
| GA    | Ft Stewart                | A       | 0                | 182    | 0        | 0      | 0        | 0      | 0     | 0      | 0     | 2      | 0              | 4            | 0          | =                        |
| GA    | Hunter Army Airfield      | A       | 0                | 34     | 0        | 0      | 0        | 1      | 0     | 0      | 0     | 0      | 0              | 0            | 0          | =                        |
| GA    | Moody AFB                 | F       | 0                | 66     | 0        | 0      | 0        | 0      | 0     | 0      | 0     | 0      | 0              | 0            | 0          | =                        |
| GA    | NAS Albany                | J       | 0                | 5      | 0        | 0      | 0        | 0      | 0     | 0      | 0     | 1      | 0              | 0            | 0          | =                        |
| GA    | NSB Kings Bay             | J       | 0                | 20     | 0        | 0      | 0        | 0      | 0     | 0      | 0     | 15     | 0              | 0            | 0          | =                        |
| GA    | Robins AFB                | F       | 0                | 1      | 0        | 9      | 0        | 38     | 0     | 0      | 0     | 0      | 0              | 0            | 0          | =                        |

# USNORTHCOM COVID-19 Cases

(2022-2023 Season: Week 4)

## COVID-19 Cases Since Week 40 (All Beneficiaries) by Installation

### Alaska through Georgia

\*Reporting of laboratory data from MHS GENESIS sites is typically delayed by 2-3 weeks

| State | Location                  | Service | COVID-19 |               | Change from past 2 weeks |
|-------|---------------------------|---------|----------|---------------|--------------------------|
|       |                           |         | 2 wks    | Since week 40 |                          |
| AK    | Eielson AFB               | F       | 2        | 46            | =                        |
| AK    | Ft Wainwright             | A       | 19       | 133           | =                        |
| AK    | JB Elmendorf-Richardson   | J       | 33       | 192           | +                        |
| AL    | Ft Rucker                 | A       | 11       | 64            | -                        |
| AL    | Maxwell AFB               | F       | 32       | 150           | +                        |
| AL    | Redstone Arsenal          | A       | 3        | 19            | -                        |
| AR    | Little Rock AFB           | F       | 6        | 145           | -                        |
| AZ    | Davis-Monthan AFB         | F       | 4        | 172           | -                        |
| AZ    | Ft Huachuca               | A       | 0        | 49            | =                        |
| AZ    | Luke AFB                  | F       | 18       | 329           | -                        |
| AZ    | MCAS Yuma                 | N       | 0        | 25            | =                        |
| CA    | Beale AFB                 | F       | 10       | 176           | -                        |
| CA    | Camp Pendleton            | N       | 51       | 1307          | -                        |
| CA    | Edwards AFB               | F       | 8        | 153           | +                        |
| CA    | Ft Irwin                  | A       | 16       | 164           | +                        |
| CA    | Los Angeles AFB           | F       | 0        | 6             | =                        |
| CA    | NAH Lemoore               | N       | 6        | 118           | -                        |
| CA    | NB Coronado               | N       | 0        | 1             | =                        |
| CA    | NB San Diego              | N       | 70       | 1765          | -                        |
| CA    | NV Ventura County         | N       | 0        | 7             | =                        |
| CA    | Travis AFB                | F       | 10       | 326           | -                        |
| CA    | Twentynine Palms          | N       | 11       | 234           | -                        |
| CA    | USAG Presidio of Monterey | A       | 16       | 209           | -                        |
| CA    | Vandenberg AFB            | F       | 1        | 16            | -                        |
| CO    | Buckley AFB               | F       | 5        | 67            | -                        |

| State | Location             | Service | COVID-19 |               | Change from past 2 weeks |
|-------|----------------------|---------|----------|---------------|--------------------------|
|       |                      |         | 2 wks    | Since week 40 |                          |
| CO    | Ft Carson            | A       | 36       | 1086          | +                        |
| CO    | Peterson AFB         | F       | 8        | 45            | +                        |
| CO    | Schriever AFB        | F       | 0        | 3             | =                        |
| CO    | USAF Academy         | F       | 18       | 179           | +                        |
| CT    | NSB New London       | N       | 7        | 141           | -                        |
| DC    | JB Anacostia-Bolling | F       | 5        | 57            | +                        |
| DC    | Pentagon             | J       | 8        | 82            | =                        |
| DC    | Washington Navy Yard | N       | 5        | 8             | +                        |
| DE    | Dover AFB            | F       | 34       | 221           | +                        |
| FL    | Eglin AFB            | J       | 15       | 117           | =                        |
| FL    | Hurlburt Field       | F       | 3        | 43            | -                        |
| FL    | Macdill AFB          | F       | 6        | 43            | +                        |
| FL    | NAS Jacksonville     | J       | 24       | 257           | -                        |
| FL    | NAS Key West         | J       | 0        | 1             | =                        |
| FL    | NAS Pensacola        | N       | 5        | 236           | -                        |
| FL    | NAS Whiting Field    | N       | 0        | 4             | =                        |
| FL    | NS Mayport           | J       | 0        | 17            | =                        |
| FL    | Patrick AFB          | F       | 0        | 11            | =                        |
| FL    | Tyndall AFB          | F       | 10       | 57            | +                        |
| GA    | Ft Benning           | A       | 69       | 298           | +                        |
| GA    | Ft Gordon            | A       | 104      | 731           | +                        |
| GA    | Ft Stewart           | A       | 15       | 234           | -                        |
| GA    | Hunter Army Airfield | A       | 0        | 9             | =                        |
| GA    | Moody AFB            | F       | 37       | 142           | +                        |
| GA    | Robins AFB           | F       | 14       | 129           | +                        |

# USNORTHCOM Laboratory-Confirmed Influenza

(2022-2023 Season: Week 4)

## Laboratory-Confirmed Influenza (All Beneficiaries) by Installation Idaho through New York

\*Reporting of laboratory data from MHS GENESIS sites is typically delayed by 2-3 weeks

| State | Location                  | Service | A (not subtyped) |        | A (H1N1) |        | A (H3N2) |        | A & B |        | B     |        | Total positive | Total tested | % Positive | Change from past 2 weeks |
|-------|---------------------------|---------|------------------|--------|----------|--------|----------|--------|-------|--------|-------|--------|----------------|--------------|------------|--------------------------|
|       |                           |         | 2 wks            | Season | 2 wks    | Season | 2 wks    | Season | 2 wks | Season | 2 wks | Season | 2 wks          | 2 wks        | 2 wks      |                          |
| ID    | Mountain Home AFB         | F       | 0                | 2      | 0        | 0      | 0        | 0      | 0     | 0      | 0     | 0      | 0              | 0            | 0          | =                        |
| IL    | NS Great Lakes            | N       | 1                | 28     | 2        | 26     | 0        | 478    | 0     | 0      | 0     | 0      | 3              | 685          | 0          | +                        |
| IL    | Scott AFB                 | F       | 1                | 2      | 0        | 23     | 1        | 70     | 0     | 0      | 0     | 0      | 2              | 42           | 5          | =                        |
| KS    | Ft Leavenworth            | A       | 0                | 84     | 0        | 0      | 0        | 0      | 0     | 0      | 0     | 7      | 0              | 0            | 0          | =                        |
| KS    | Ft Riley                  | A       | 0                | 271    | 0        | 0      | 0        | 0      | 0     | 1      | 0     | 3      | 0              | 7            | 0          | =                        |
| KS    | McConnell AFB             | F       | 0                | 58     | 0        | 0      | 0        | 0      | 0     | 0      | 0     | 0      | 0              | 0            | 0          | =                        |
| KY    | Ft Campbell               | A       | 5                | 865    | 0        | 0      | 0        | 1      | 0     | 3      | 13    | 83     | 18             | 392          | 5          | +                        |
| KY    | Ft Knox                   | A       | 1                | 77     | 0        | 0      | 0        | 0      | 1     | 7      | 0     | 25     | 2              | 75           | 3          | -                        |
| LA    | Barksdale AFB             | F       | 0                | 13     | 0        | 0      | 0        | 0      | 0     | 0      | 0     | 1      | 0              | 0            | 0          | =                        |
| LA    | Ft Polk                   | A       | 0                | 78     | 0        | 0      | 0        | 0      | 0     | 0      | 0     | 3      | 0              | 8            | 0          | =                        |
| LA    | NAS Belle Chase           | N       | 0                | 7      | 0        | 0      | 0        | 0      | 0     | 0      | 0     | 0      | 0              | 0            | 0          | =                        |
| MA    | Hanscom AFB               | F       | 0                | 1      | 0        | 0      | 0        | 8      | 0     | 0      | 0     | 1      | 0              | 3            | 0          | =                        |
| MD    | Aberdeen Proving Ground   | A       | 1                | 22     | 0        | 0      | 0        | 0      | 1     | 1      | 0     | 3      | 2              | 34           | 6          | =                        |
| MD    | Ft Detrick                | A       | 4                | 66     | 0        | 0      | 0        | 0      | 0     | 0      | 1     | 7      | 5              | 51           | 10         | +                        |
| MD    | Ft Meade                  | A       | 5                | 239    | 0        | 0      | 0        | 0      | 0     | 0      | 0     | 0      | 5              | 275          | 2          | +                        |
| MD    | JB Andrews                | F       | 4                | 380    | 0        | 0      | 0        | 1      | 0     | 0      | 0     | 0      | 4              | 206          | 2          | =                        |
| MD    | NAS Patuxent River        | N       | 0                | 59     | 0        | 0      | 0        | 0      | 0     | 1      | 0     | 0      | 0              | 25           | 0          | =                        |
| MD    | NBHC Bancroft Hall        | N       | 0                | 134    | 0        | 0      | 0        | 0      | 0     | 0      | 0     | 1      | 0              | 155          | 0          | =                        |
| MD    | NHC Annapolis             | N       | 0                | 46     | 0        | 1      | 0        | 0      | 0     | 0      | 0     | 1      | 0              | 29           | 0          | =                        |
| MD    | NSF Indian Head           | N       | 0                | 14     | 0        | 1      | 0        | 2      | 0     | 3      | 0     | 0      | 0              | 10           | 0          | =                        |
| MD    | WRNMMC                    | J       | 6                | 456    | 0        | 16     | 2        | 93     | 0     | 0      | 0     | 1      | 8              | 504          | 2          | +                        |
| MO    | Ft Leonard Wood           | A       | 0                | 205    | 0        | 0      | 0        | 0      | 0     | 3      | 0     | 20     | 0              | 26           | 0          | =                        |
| MO    | Whiteman AFB              | F       | 0                | 41     | 0        | 0      | 0        | 0      | 0     | 0      | 0     | 0      | 0              | 0            | 0          | =                        |
| MS    | Columbus AFB              | F       | 0                | 8      | 0        | 0      | 0        | 0      | 0     | 0      | 0     | 0      | 0              | 0            | 0          | =                        |
| MS    | Keesler AFB               | J       | 0                | 175    | 0        | 0      | 0        | 9      | 0     | 0      | 0     | 0      | 0              | 2            | 0          | =                        |
| MS    | NAS Meridian              | N       | 0                | 15     | 0        | 0      | 0        | 0      | 0     | 1      | 0     | 2      | 0              | 0            | 0          | =                        |
| MS    | NBHC Gulfport             | N       | 0                | 15     | 0        | 0      | 0        | 0      | 0     | 1      | 0     | 2      | 0              | 0            | 0          | =                        |
| MT    | Malmstrom AFB             | F       | 0                | 24     | 0        | 0      | 0        | 0      | 0     | 0      | 0     | 0      | 0              | 0            | 0          | =                        |
| NC    | Camp Lejeune              | N       | 1                | 220    | 0        | 0      | 0        | 3      | 0     | 0      | 0     | 6      | 1              | 17           | 6          | -                        |
| NC    | Ft Bragg                  | J       | 2                | 906    | 0        | 2      | 0        | 7      | 0     | 1      | 0     | 8      | 2              | 28           | 7          | -                        |
| NC    | MCAS Cherry Point         | N       | 0                | 103    | 0        | 0      | 0        | 0      | 0     | 0      | 0     | 35     | 0              | 0            | 0          | =                        |
| NC    | Pope Army Airfield        | J       | 0                | 70     | 0        | 1      | 0        | 1      | 0     | 0      | 0     | 1      | 0              | 0            | 0          | =                        |
| NC    | Seymour Johnson AFB       | J       | 0                | 57     | 0        | 0      | 0        | 0      | 0     | 0      | 0     | 10     | 0              | 0            | 0          | =                        |
| ND    | Grand Forks AFB           | F       | 0                | 6      | 0        | 0      | 0        | 0      | 0     | 0      | 0     | 0      | 0              | 0            | 0          | =                        |
| ND    | Minot AFB                 | F       | 0                | 10     | 0        | 0      | 0        | 0      | 0     | 0      | 0     | 1      | 0              | 0            | 0          | =                        |
| NE    | Offutt AFB                | F       | 0                | 19     | 0        | 0      | 0        | 0      | 0     | 0      | 0     | 0      | 0              | 0            | 0          | =                        |
| NH    | Portsmouth                | N       | 1                | 4      | 0        | 0      | 0        | 0      | 0     | 0      | 1     | 1      | 2              | 4            | 50         | -                        |
| NJ    | JB McGuire-Dix-Lakehurst  | F       | 0                | 117    | 0        | 1      | 0        | 3      | 0     | 1      | 0     | 0      | 0              | 34           | 0          | =                        |
| NM    | Cannon AFB                | F       | 0                | 48     | 0        | 0      | 0        | 0      | 0     | 0      | 0     | 0      | 0              | 0            | 0          | =                        |
| NM    | Holloman AFB              | F       | 0                | 51     | 0        | 0      | 0        | 0      | 0     | 0      | 0     | 0      | 0              | 0            | 0          | =                        |
| NM    | Kirtland AFB              | F       | 0                | 22     | 0        | 0      | 0        | 0      | 0     | 0      | 0     | 0      | 0              | 0            | 0          | =                        |
| NM    | White Sands Missile Range | A       | 0                | 4      | 0        | 0      | 0        | 0      | 0     | 0      | 0     | 0      | 0              | 0            | 0          | =                        |
| NV    | Nellis AFB                | F       | 1                | 328    | 0        | 5      | 0        | 33     | 0     | 0      | 0     | 8      | 1              | 13           | 8          | -                        |
| NY    | Ft Drum                   | A       | 1                | 103    | 0        | 2      | 0        | 32     | 0     | 0      | 0     | 3      | 1              | 30           | 3          | -                        |
| NY    | West Point                | A       | 0                | 92     | 0        | 0      | 0        | 9      | 0     | 2      | 0     | 1      | 0              | 17           | 0          | =                        |



# USNORTHCOM COVID-19 Cases

(2022-2023 Season: Week 4)

## COVID-19 Cases Since Week 40 (All Beneficiaries) by Installation Idaho through New York

\*Reporting of laboratory data from MHS GENESIS sites is typically delayed by 2-3 weeks

| State | Location                  | Service | COVID-19 |                  | Change from<br>past 2 weeks |
|-------|---------------------------|---------|----------|------------------|-----------------------------|
|       |                           |         | 2 wks    | Since week<br>40 |                             |
| ID    | Mountain Home AFB         | F       | 4        | 119              | -                           |
| IL    | NS Great Lakes            | N       | 70       | 713              | +                           |
| IL    | Rock Island Arsenal       | A       | 0        | 1                | =                           |
| IL    | Scott AFB                 | F       | 9        | 63               | +                           |
| KS    | Ft Leavenworth            | A       | 12       | 148              | -                           |
| KS    | Ft Riley                  | A       | 9        | 316              | =                           |
| KS    | McConnell AFB             | F       | 5        | 113              | -                           |
| KY    | Ft Campbell               | A       | 83       | 552              | +                           |
| KY    | Ft Knox                   | A       | 20       | 133              | +                           |
| LA    | Barksdale AFB             | F       | 26       | 183              | +                           |
| LA    | Ft Polk                   | A       | 51       | 243              | +                           |
| MA    | Hanscom AFB               | F       | 2        | 28               | -                           |
| MD    | Aberdeen Proving Ground   | A       | 5        | 95               | -                           |
| MD    | Ft Detrick                | A       | 10       | 111              | +                           |
| MD    | Ft Meade                  | A       | 65       | 524              | -                           |
| MD    | JB Andrews                | F       | 59       | 483              | -                           |
| MD    | NAS Patuxent River        | N       | 1        | 76               | -                           |
| MD    | NBHC Bancroft Hall        | N       | 14       | 46               | +                           |
| MD    | NHC Annapolis             | N       | 3        | 64               | -                           |
| MD    | NSF Indian Head           | N       | 2        | 22               | =                           |
| MD    | WRNMMC                    | J       | 90       | 865              | -                           |
| MO    | Ft Leonard Wood           | A       | 81       | 512              | -                           |
| MO    | Whiteman AFB              | F       | 9        | 148              | -                           |
| MS    | Columbus AFB              | F       | 1        | 10               | =                           |
| MS    | Keesler AFB               | J       | 34       | 225              | -                           |
| MS    | NAS Meridian              | N       | 0        | 8                | =                           |
| MT    | Malmstrom AFB             | F       | 18       | 146              | +                           |
| NC    | Camp Lejeune              | N       | 157      | 763              | -                           |
| NC    | Ft Bragg                  | J       | 287      | 1575             | +                           |
| NC    | MCAS Cherry Point         | N       | 7        | 111              | -                           |
| NC    | Pope Army Airfield        | J       | 0        | 6                | =                           |
| NC    | Seymour Johnson AFB       | J       | 21       | 171              | -                           |
| ND    | Grand Forks AFB           | F       | 2        | 57               | -                           |
| ND    | Minot AFB                 | F       | 19       | 261              | +                           |
| NE    | Offutt AFB                | F       | 5        | 52               | -                           |
| NH    | Portsmouth                | N       | 0        | 7                | =                           |
| NJ    | JB McGuire-Dix-Lakehurst  | F       | 4        | 110              | -                           |
| NM    | Cannon AFB                | F       | 5        | 46               | +                           |
| NM    | Holloman AFB              | F       | 0        | 30               | =                           |
| NM    | Kirtland AFB              | F       | 3        | 100              | -                           |
| NM    | White Sands Missile Range | A       | 0        | 1                | =                           |
| NV    | Nellis AFB                | F       | 44       | 711              | +                           |
| NY    | Ft Drum                   | A       | 95       | 572              | -                           |
| NY    | West Point                | A       | 1        | 37               | -                           |

# USNORTHCOM Laboratory-Confirmed Influenza

(2022-2023 Season: Week 4)

## Laboratory-Confirmed Influenza (All Beneficiaries) by Installation Ohio through Wyoming

\*Reporting of laboratory data from MHS GENESIS sites is typically delayed by 2-3 weeks

| State | Location                 | Service | A (not subtyped) |        | A (H1N1) |        | A (H3N2) |        | A & B |        | B     |        | Total positive | Total tested | % Positive | Change from past 2 weeks |
|-------|--------------------------|---------|------------------|--------|----------|--------|----------|--------|-------|--------|-------|--------|----------------|--------------|------------|--------------------------|
|       |                          |         | 2 wks            | Season | 2 wks    | Season | 2 wks    | Season | 2 wks | Season | 2 wks | Season | 2 wks          | 2 wks        | 2 wks      |                          |
| OH    | Wright-Patterson AFB     | F       | 0                | 443    | 0        | 23     | 0        | 35     | 0     | 0      | 0     | 2      | 0              | 279          | 0          | =                        |
| OK    | Altus AFB                | F       | 0                | 43     | 0        | 0      | 0        | 0      | 0     | 0      | 0     | 0      | 0              | 0            | 0          | =                        |
| OK    | Ft Sill                  | A       | 0                | 280    | 0        | 0      | 0        | 0      | 0     | 1      | 0     | 24     | 0              | 0            | 0          | =                        |
| OK    | Tinker AFB               | F       | 0                | 6      | 0        | 0      | 0        | 1      | 0     | 0      | 0     | 0      | 0              | 0            | 0          | =                        |
| OK    | Vance AFB                | F       | 0                | 11     | 0        | 0      | 0        | 0      | 0     | 0      | 0     | 1      | 0              | 0            | 0          | =                        |
| PA    | Carlisle Barracks        | A       | 0                | 31     | 0        | 0      | 0        | 0      | 0     | 0      | 0     | 0      | 0              | 8            | 0          | =                        |
| PR    | Ft Buchanan              | A       | 0                | 19     | 0        | 0      | 0        | 0      | 0     | 0      | 0     | 0      | 0              | 20           | 0          | =                        |
| RI    | NHC New England          | N       | 0                | 13     | 0        | 1      | 0        | 2      | 0     | 1      | 0     | 0      | 0              | 4            | 0          | =                        |
| SC    | Ft Jackson               | A       | 0                | 120    | 0        | 0      | 0        | 0      | 0     | 3      | 0     | 14     | 0              | 0            | 0          | =                        |
| SC    | JB Charleston            | J       | 0                | 63     | 0        | 0      | 0        | 0      | 0     | 0      | 0     | 0      | 0              | 0            | 0          | =                        |
| SC    | MCAS Beaufort            | N       | 0                | 30     | 0        | 0      | 0        | 0      | 0     | 0      | 0     | 0      | 0              | 0            | 0          | =                        |
| SC    | Parris Island            | N       | 0                | 50     | 0        | 0      | 0        | 0      | 0     | 0      | 0     | 11     | 0              | 3            | 0          | =                        |
| SC    | Shaw AFB                 | F       | 0                | 67     | 0        | 0      | 0        | 0      | 0     | 0      | 0     | 1      | 0              | 0            | 0          | =                        |
| SD    | Ellsworth AFB            | F       | 0                | 35     | 0        | 0      | 0        | 0      | 0     | 0      | 0     | 0      | 0              | 0            | 0          | =                        |
| TN    | Ft Campbell              | A       | 0                | 223    | 0        | 1      | 0        | 0      | 1     | 6      | 7     | 32     | 8              | 107          | 7          | -                        |
| TN    | NSA Mid-South            | N       | 0                | 9      | 0        | 0      | 0        | 0      | 0     | 0      | 0     | 0      | 0              | 0            | 0          | =                        |
| TX    | Dyess AFB                | F       | 0                | 44     | 0        | 0      | 0        | 0      | 0     | 0      | 0     | 4      | 0              | 0            | 0          | =                        |
| TX    | Ft Bliss                 | A       | 3                | 613    | 0        | 0      | 0        | 7      | 0     | 0      | 0     | 8      | 3              | 37           | 8          | -                        |
| TX    | Ft Hood                  | A       | 0                | 366    | 0        | 13     | 0        | 56     | 1     | 9      | 0     | 30     | 1              | 19           | 5          | -                        |
| TX    | Goodfellow AFB           | F       | 0                | 30     | 0        | 0      | 0        | 0      | 0     | 0      | 0     | 1      | 0              | 0            | 0          | =                        |
| TX    | JB San Antonio           | J       | 1                | 1490   | 0        | 24     | 0        | 43     | 0     | 3      | 1     | 16     | 2              | 116          | 2          | -                        |
| TX    | Laughlin AFB             | F       | 0                | 24     | 0        | 0      | 0        | 0      | 0     | 0      | 0     | 1      | 0              | 0            | 0          | =                        |
| TX    | NAS Corpus Christi       | N       | 0                | 21     | 0        | 0      | 0        | 0      | 0     | 0      | 0     | 0      | 0              | 0            | 0          | =                        |
| TX    | NAS JRB Fort Worth       | N       | 0                | 0      | 0        | 0      | 0        | 0      | 0     | 0      | 0     | 0      | 0              | 0            | 0          | =                        |
| TX    | NAS Kingsville           | N       | 0                | 4      | 0        | 0      | 0        | 0      | 0     | 0      | 0     | 0      | 0              | 0            | 0          | =                        |
| TX    | Sheppard AFB             | F       | 0                | 14     | 3        | 22     | 1        | 70     | 0     | 0      | 0     | 1      | 4              | 82           | 5          | =                        |
| UT    | Hill AFB                 | F       | 0                | 0      | 0        | 3      | 0        | 11     | 0     | 0      | 0     | 0      | 0              | 0            | 0          | =                        |
| VA    | Ft Belvoir               | J       | 19               | 1440   | 0        | 7      | 0        | 44     | 3     | 21     | 9     | 146    | 31             | 695          | 4          | -                        |
| VA    | Ft Lee                   | A       | 0                | 304    | 0        | 0      | 0        | 0      | 0     | 3      | 0     | 7      | 0              | 96           | 0          | =                        |
| VA    | JB Langley-Eustis        | J       | 5                | 615    | 0        | 5      | 0        | 37     | 0     | 1      | 0     | 4      | 5              | 184          | 3          | -                        |
| VA    | JB Little Creek-Ft Story | J       | 0                | 6      | 0        | 0      | 0        | 3      | 0     | 0      | 0     | 0      | 0              | 0            | 0          | =                        |
| VA    | JB Myer-Henderson Hall   | A       | 0                | 7      | 1        | 3      | 1        | 8      | 0     | 0      | 0     | 1      | 2              | 16           | 13         | -                        |
| VA    | MCB Quantico             | N       | 0                | 48     | 0        | 0      | 0        | 2      | 0     | 0      | 0     | 1      | 0              | 35           | 0          | =                        |
| VA    | NAS Oceana               | N       | 0                | 25     | 0        | 14     | 0        | 28     | 0     | 0      | 0     | 0      | 0              | 5            | 0          | =                        |
| VA    | NB Dam Neck              | N       | 0                | 2      | 0        | 3      | 0        | 2      | 0     | 0      | 0     | 0      | 0              | 2            | 0          | =                        |
| VA    | NS Norfolk               | N       | 1                | 20     | 0        | 7      | 0        | 24     | 0     | 0      | 0     | 0      | 1              | 12           | 8          | -                        |
| VA    | NWS Dahlgren             | N       | 0                | 3      | 0        | 0      | 0        | 0      | 0     | 1      | 0     | 0      | 0              | 15           | 0          | =                        |
| VA    | NWS Yorktown             | N       | 0                | 20     | 0        | 1      | 0        | 3      | 0     | 0      | 0     | 0      | 0              | 2            | 0          | =                        |
| VA    | Portsmouth               | N       | 3                | 226    | 0        | 34     | 0        | 195    | 1     | 4      | 1     | 6      | 5              | 97           | 5          | -                        |
| VA    | TPC Chesapeake           | N       | 0                | 0      | 0        | 1      | 0        | 6      | 0     | 0      | 0     | 0      | 0              | 0            | 0          | =                        |
| VA    | TPC Suffolk              | N       | 0                | 6      | 0        | 0      | 0        | 2      | 0     | 0      | 0     | 0      | 0              | 0            | 0          | =                        |
| WY    | FE Warren AFB            | F       | 0                | 16     | 0        | 0      | 0        | 0      | 0     | 0      | 0     | 7      | 0              | 0            | 0          | =                        |

# USNORTHCOM COVID-19 Cases

(2022-2023 Season: Week 4)

## COVID-19 Cases Since Week 40 (All Beneficiaries) by Installation Ohio through Wyoming

\*Reporting of laboratory data from MHS GENESIS sites is typically delayed by 2-3 weeks

| State | Location                 | Service | COVID-19 |               | Change from past 2 weeks |
|-------|--------------------------|---------|----------|---------------|--------------------------|
|       |                          |         | 2 wks    | Since week 40 |                          |
| OH    | Wright-Patterson AFB     | F       | 54       | 615           | +                        |
| OK    | Altus AFB                | F       | 10       | 85            | +                        |
| OK    | Ft Sill                  | A       | 53       | 464           | -                        |
| OK    | Tinker AFB               | F       | 3        | 33            | +                        |
| OK    | Vance AFB                | F       | 9        | 47            | +                        |
| PA    | Carlisle Barracks        | A       | 0        | 3             | =                        |
| PR    | Ft Buchanan              | A       | 9        | 70            | -                        |
| RI    | NHC New England          | N       | 1        | 40            | -                        |
| SC    | Ft Jackson               | A       | 20       | 112           | +                        |
| SC    | JB Charleston            | J       | 10       | 132           | -                        |
| SC    | MCAS Beaufort            | N       | 0        | 68            | =                        |
| SC    | Parris Island            | N       | 0        | 31            | =                        |
| SC    | Shaw AFB                 | F       | 56       | 279           | -                        |
| SD    | Ellsworth AFB            | F       | 14       | 110           | +                        |
| TN    | Ft Campbell              | A       | 20       | 71            | +                        |
| TN    | NSA Mid-South            | N       | 0        | 5             | =                        |
| TX    | Dyess AFB                | F       | 15       | 117           | +                        |
| TX    | Ft Bliss                 | A       | 38       | 1372          | -                        |
| TX    | Ft Hood                  | A       | 181      | 1290          | -                        |
| TX    | Goodfellow AFB           | F       | 6        | 73            | -                        |
| TX    | JB San Antonio           | J       | 278      | 2250          | -                        |
| TX    | Laughlin AFB             | F       | 0        | 3             | =                        |
| TX    | NAS Corpus Christi       | N       | 1        | 25            | -                        |
| TX    | Sheppard AFB             | F       | 13       | 73            | -                        |
| UT    | Hill AFB                 | F       | 3        | 120           | -                        |
| VA    | Ft Belvoir               | J       | 92       | 831           | +                        |
| VA    | Ft Lee                   | A       | 24       | 163           | +                        |
| VA    | JB Langley-Eustis        | J       | 64       | 674           | -                        |
| VA    | JB Little Creek-Ft Story | J       | 0        | 31            | =                        |
| VA    | JB Myer-Henderson Hall   | A       | 5        | 39            | -                        |
| VA    | MCB Quantico             | N       | 8        | 59            | -                        |
| VA    | NAS Oceana               | N       | 1        | 19            | =                        |
| VA    | NB Dam Neck              | N       | 0        | 7             | =                        |
| VA    | NS Norfolk               | N       | 3        | 15            | =                        |
| VA    | NWS Dahlgren             | N       | 3        | 18            | =                        |
| VA    | NWS Yorktown             | N       | 0        | 10            | =                        |
| VA    | Portsmouth               | N       | 15       | 531           | -                        |
| VA    | TPC Chesapeake           | N       | 0        | 1             | =                        |
| VA    | TPC Suffolk              | N       | 0        | 2             | =                        |
| WY    | FE Warren AFB            | F       | 7        | 148           | +                        |

# Surveillance Programs and Data Sources

## Defense Health Agency / Armed Forces Health Surveillance Division (AFHSD):

The Armed Forces Health Surveillance Division (AFHSD) is the central epidemiologic resource for the U.S. Armed Forces, conducting medical surveillance to protect those who serve our nation in uniform and allies who are critical to our national security interests. The Epidemiology and Analysis Section of AFHSD, the Epi Data Center of the Defense Centers for Public Health—Portsmouth (DCPH-P), and the Defense Centers of Public Health—Dayton (DCPH-D) have compiled data for this report from the following sources below.

### Influenza-like Illness Activity:

Medical encounter and demographic data from the AFHSD's Defense Medical Surveillance System (DMSS) are used to generate portions of this report. ICD-10 codes from outpatient encounters are used to identify influenza-like illness (ILI). ILI is defined using the following codes: B97.89, H66.9, H66.90, H66.91, H66.92, H66.93, J00, J01.9, J01.90, J06.9, J09, J09.X, J09.X1, J09.X2, J09.X3, J09.X9, J10, J10.0, J10.00, J10.01, J10.08, J10.1, J10.2, J10.8, J10.81, J10.82, J10.83, J10.89, J11, J11.0, J11.00, J11.08, J11.1, J11.2, J11.8, J11.81, J11.82, J11.83, J11.89, J12.89, J12.9, J18, J18.1, J18.8, J18.9, J20.9, J40, R05, R50.9.

The percentage of all outpatient visits that have an ILI code is calculated each week for all service members, regardless of component. These data are presented weekly for the current season and compared to the four prior seasons among service members. Influenza activity levels are calculated by comparing the mean reported percent of visits due to ILI for the previous two weeks to the mean reported percent of visits due to ILI during baseline weeks (defined as non-influenza weeks (weeks 22-39) over the past 3 years). Since the 2020-2021 and 2021-2022 influenza seasons were significantly reduced due to COVID-19 mitigation efforts, these seasons were excluded from the baseline calculations. The baseline weeks for the 2022-2023 report are from the years 2018, 2019, and 2020. There are four influenza activity levels, minimal, low, moderate, and high. The activity level corresponds to the number of standard deviations (SD) below, at or above the mean for the current 2 week period compared to the mean of the baseline weeks. Minimal activity corresponds to an influenza percentage that is less than 2 SD above the mean. Low activity corresponds to an influenza percentage that is equal to or greater than 2 SD above the mean, but less than 4 SD above the mean. Moderate activity corresponds to an influenza percentage that is equal to or greater than 4 SD above the mean, but less than 6 SD above the mean. High activity corresponds to an influenza percentage that is equal to or greater than 6 SD above the mean.

Influenza activity levels are presented in the Geographic Combatant Command (GCC) maps, either by Installation, state, or country.

### Influenza Positive Specimens:

Influenza lab results (HL-7 formatted data) are compiled and transmitted from the DCPH-P to AFHSD. Results obtained via PCR, viral culture, and rapid influenza assays are reported. Although the inclusion of rapid tests may underestimate the weekly and cumulative percent positive estimates due to false negatives, visibility of the positive rapid results provides valuable information for this surveillance report. Influenza types/subtypes are categorized as influenza A/not subtyped, influenza A(H1N1), influenza A(H3N2), influenza A and B co-infection, and influenza B. Additionally, laboratory-confirmed positive results are used to identify influenza-related hospitalization cases across the DoD.

The percent positivity is calculated by dividing the number of influenza positive specimens by the total number of specimens (positive and negative only; inconclusive results are excluded). The distributions of percent positive specimens by subtype are presented on a weekly basis for the entire influenza season. The distribution of subtypes for the previous 2 weeks are presented as pie graphs for states and countries. For installations, data are presented in tables with counts and percent positive by subtype for the past 2 weeks and for the entire season. The "change from last report" column reports the absolute difference in the percent positive from the prior week's report to the current week's report.

# Surveillance Programs and Data Sources

## **COVID-19 Cases:**

COVID-19 case data are compiled from the COVID-19 positive lab results (HL-7 formatted data) and cases reported in the DRSi. The percent positivity calculation is restricted to only COVID-19 cases reported through the lab data so that an accurate denominator can be obtained. The percent positivity is calculated by dividing the number of COVID-19 positive specimens by the total number of specimens tested for COVID-19. For installations, COVID-19 case data are presented in tables with case counts for the past 2 weeks and for the entire influenza season (Week 40 to current). The “change from last report” column reports the absolute difference in the number of COVID-19 case counts from the prior week’s report to the current week’s report.

## **Pharmacy Transactions for Dispensed Influenza Antiviral Prescriptions:**

HL7-formatted pharmacy transactions are used to assess the number of dispensed influenza antiviral (AV) prescriptions. Four influenza AV medications approved by the Food and Drug Administration (FDA) are recommended by the CDC for use in the United States (US) for the 2022-2023 influenza season: oral oseltamivir (Tamiflu® or generic), inhaled zanamivir (Relenza®), and intravenous peramivir (Rapivab®), and baloxavir marboxil (Xofluza®). These prescriptions are included in this surveillance. The overall count of dispensed AV prescriptions by week is presented graphically for the influenza season. A seasonal baseline is displayed with dispensed AV prescriptions. Surveillance thresholds are displayed with the count of inpatient dispensed AV prescriptions. Additionally, counts of inpatient dispensed influenza AV prescriptions are presented weekly for the influenza season.

## **Influenza Baselines, Thresholds, and Trends:**

Weekly baselines used a three-year average to compare results with those from the same week during the previous three seasons. Since the 2020-2021 and 2021-2022 influenza seasons were significantly reduced due to COVID-19 mitigation efforts, these seasons were excluded from the baseline calculations. The baseline calculations used the 2017-2018, 2018-2019, and 2019-2020 season data. Bands for one and two standard deviations above seasonal baseline estimates are displayed to indicate when trends diverge with respect to timing or volume from those of recent seasons. The ILI, lab, and dispensed AV prescription data thresholds are calculated by adding two standard deviations to the off-season average.

Inpatient thresholds (lab and dispensed AV prescription data) are calculated by adding one standard deviation to the overall weighted average for in-season weeks. Weeks that represent at least 2% of the total season’s laboratory-positive influenza cases for at least two consecutive weeks was considered to be “in-season” or influenza weeks; all other weeks are considered to be “off-season” or non-influenza weeks.

## **Links to Service-Specific Influenza Reports:**

Select the following links to see service-specific influenza surveillance weekly reports:

- Defense Centers for Public Health—Portsmouth (DCPH-P):  
<https://www.med.navy.mil/Navy-Marine-Corps-Public-Health-Center/Population-Health/Epi-Data-Center/Diseases-Conditions-and-Infections/Influenza/>
- Defense Centers for Public Health—Dayton (DCPH-D):  
To access the Air Force weekly influenza reports, an AFNet account is required. Anyone with a CAC can request access to AFNet at: <https://epi.afds.af.mil/nonaf>