

DoD Consolidated Influenza Surveillance Report



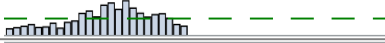

Week 13 (24 March 2024 - 30 March 2024)



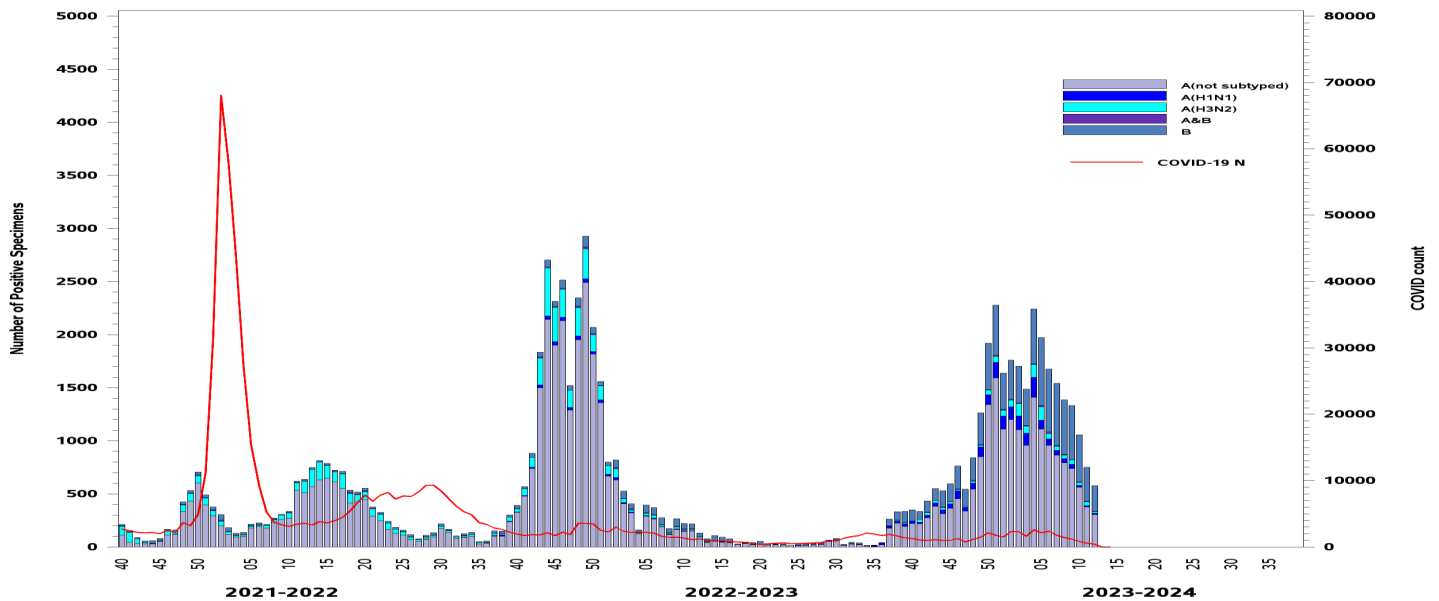
One Page Summary: Weekly Highlights

- Laboratory-confirmed influenza cases were at normal activity levels, while hospitalizations were low. Among service members, laboratory cases and ILI outpatient visits were low.
- COVID-19 cases predominated among service members and beneficiaries 65 years or older. However, influenza is predominating this season among all other beneficiaries.
- There were 5 new laboratory-confirmed influenza hospitalizations reported for week 12 (Season totals: 545; 61 service members and 484 other beneficiaries).

Influenza Surveillance Indicators (2023-2024 season)

| All Beneficiaries | Total Per Week | Trend | Activity Level |
|----------------------------|----------------|--|-----------------------|
| Laboratory Cases | 578 |  | Normal |
| Severity | | | Activity Level |
| Inpatient Laboratory Cases | 5 |  | Low |
| Active Component | | | Activity Level |
| Laboratory Cases | 183 |  | Low |
| ILI Outpatient Visits | 2% |  | |

Laboratory-Confirmed Influenza and COVID-19 among Beneficiaries: Serotype Distribution

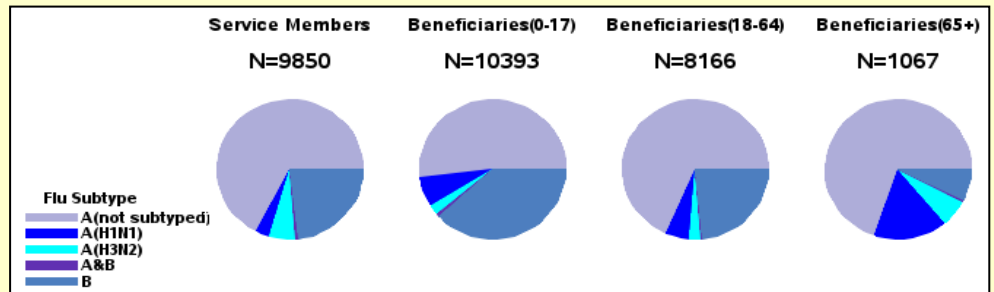


Confirmed Influenza and COVID-19 Cases (2023 2024 Season: Week 13)

*Reporting of laboratory data from MHS GENESIS is typically delayed by 2 weeks

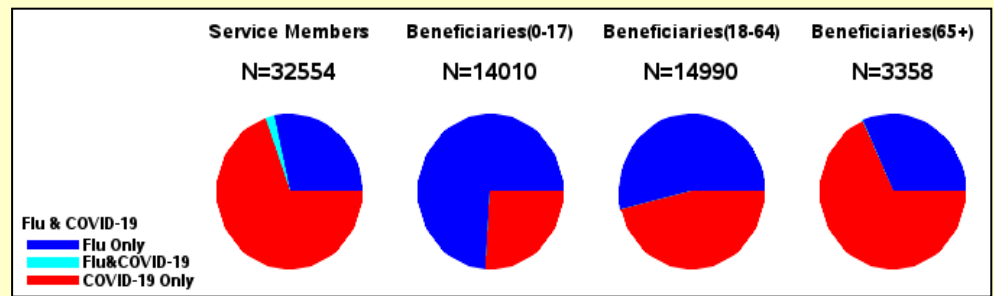
Number and Distribution of Influenza Positive Specimens since week 40, by Beneficiary Status and Serotype

- The number of laboratory-confirmed influenza positive specimens for the season to date was highest among children (10,393), followed by service members (9,850).
- Among subtyped influenza A specimens, A(H1N1) has predominated, except among service members where A(H3N2) has predominated.

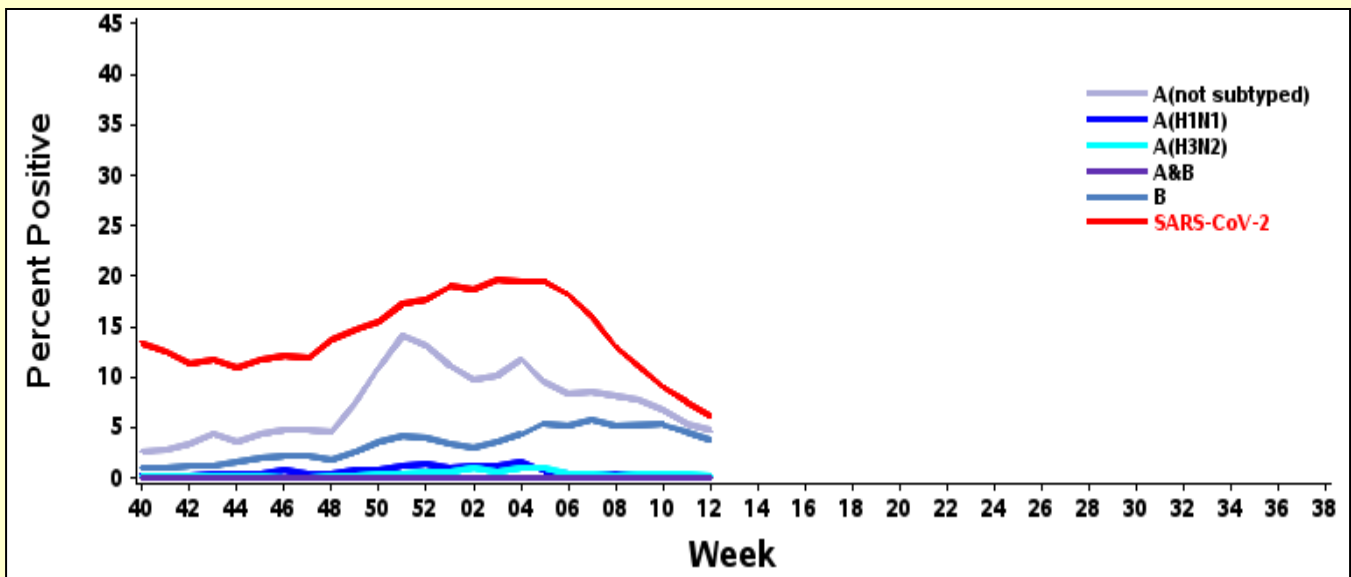


Number and Distribution of Influenza Positive Specimens and COVID-19 Cases since week 40, by Beneficiary Status

- COVID-19 cases predominated among service members and beneficiaries 65 years or older. However, influenza is predominating this season among all other beneficiaries.



Percent of Specimens Positive for Influenza (by Serotype) or SARS-CoV-2



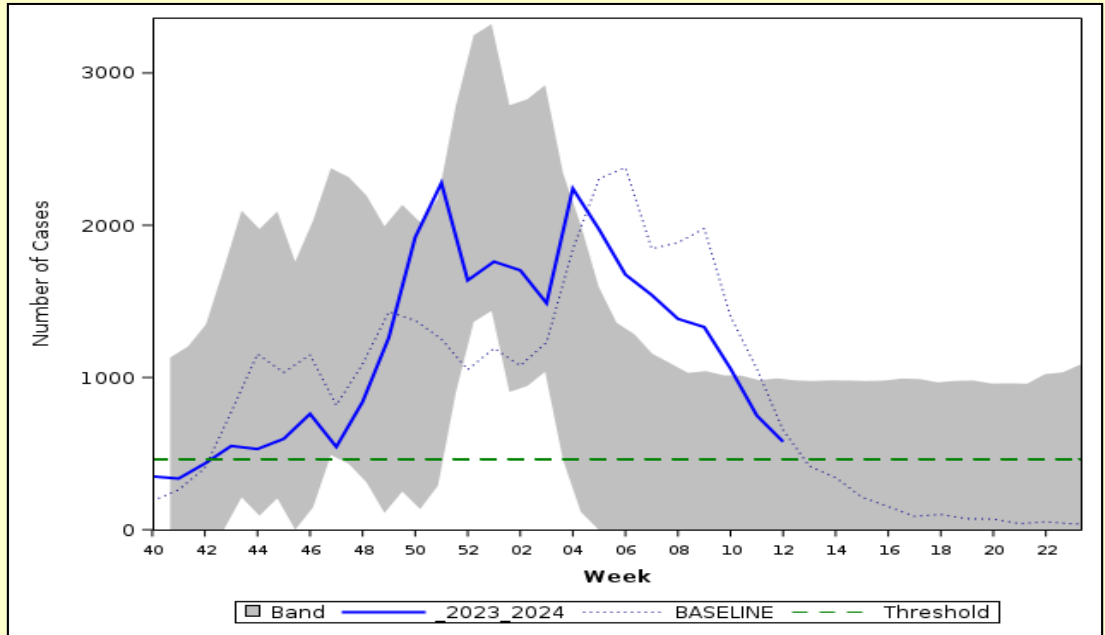
- The percent of specimens positive for SARS-CoV-2 continued to decrease. The percent of specimens positive for influenza decreased or remained stable, depending on the type and subtype.

Laboratory-Confirmed Influenza (2023 2024 Season: Week 13)

*Reporting of laboratory data from MHS GENESIS is typically delayed by 2 weeks

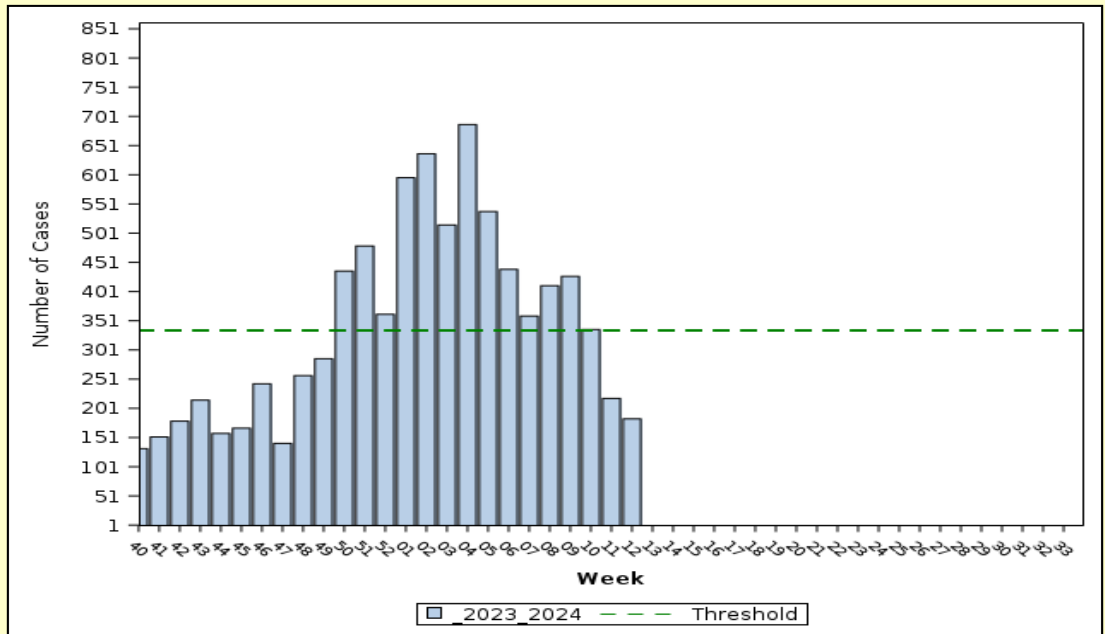
Laboratory-Positive Influenza Cases, All Beneficiaries

- The number of laboratory-confirmed influenza cases among all beneficiaries continued to decrease, but remained higher than the threshold.
- Band indicates one standard deviation above and below seasonal baseline estimates. Threshold indicates two standard deviations above off-season average.



Laboratory-Positive Influenza Cases, Active Component Service

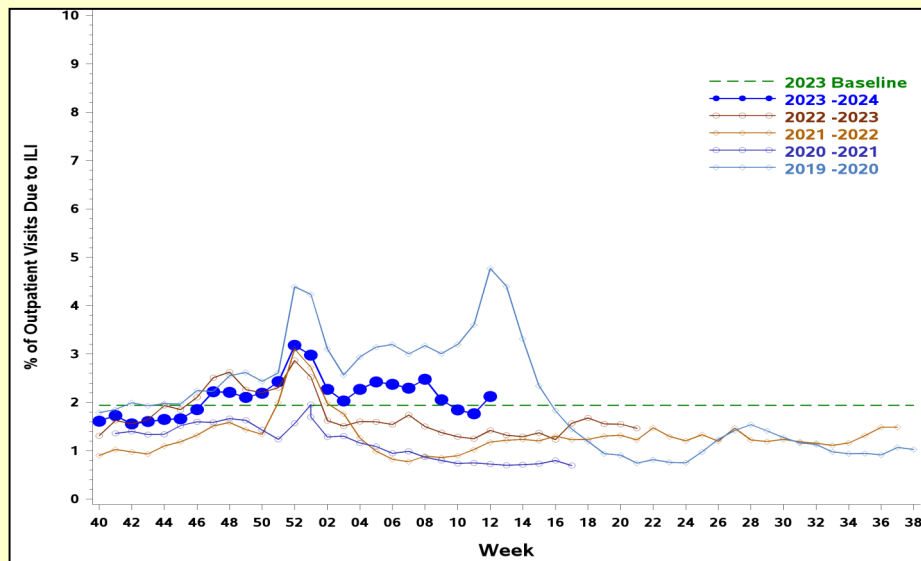
- The number of active component service member laboratory-confirmed influenza cases continued to decrease from week 09 and was below the threshold.
- Threshold indicates two standard deviations above seasonal baseline estimates.



ILI and Hospitalized Influenza (2023-2024 Season: Week 13)

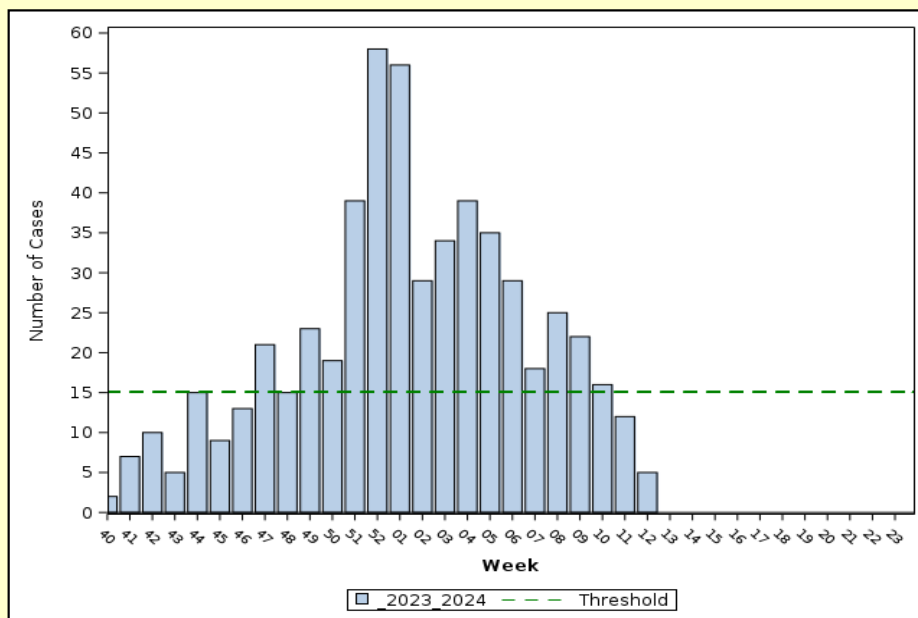
Percent of Outpatient Visits Due to ILI:

- The percentage of outpatient visits due to ILI increased during week 12 and went above baseline and remained higher than the previous 3 seasons.



Hospitalized Laboratory-Positive Influenza Cases, All Beneficiaries

- There were 5 new laboratory-confirmed influenza hospitalizations reported for week 12 (the last week with available data) (Season totals: 545; 61 service members and 484 other beneficiaries).
- Thresholds indicate one standard deviation above the overall weighted average during the season. However, there is not enough data for the season to calculate the threshold for the influenza-specific antiviral prescriptions metric.

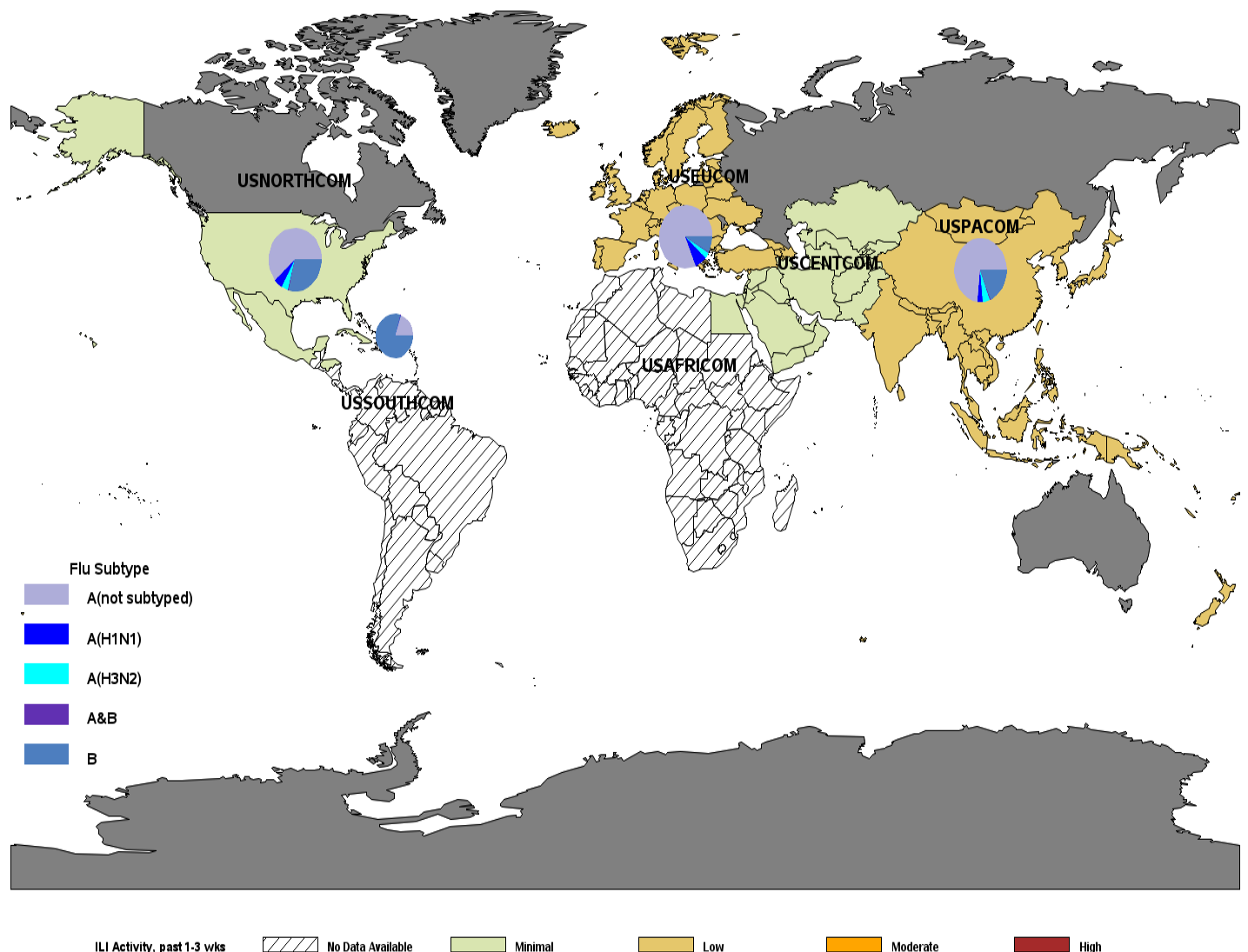


Influenza Activity: Geographic Combatant Command

(2023 2024 Season: Week 13)

- USNORTHCOM: ILI activity remained minimal. The majority of laboratory-confirmed influenza cases have been influenza A (not subtyped) and influenza B.
- USEUCOM: ILI activity increased to low. The majority of laboratory-confirmed influenza cases have been influenza A (not subtyped) and A(H1N1).
- USINDOPACOM: ILI activity increased to low. The majority of laboratory-confirmed influenza cases have been influenza A (not subtyped) and influenza B.
- USSOUTHCOM: ILI activity remained minimal. Five specimens have tested positive for influenza this season; 4 were influenza B and 1 was influenza A (not subtyped).
- USCENTCOM: ILI activity remained minimal.

ILI Activity (Service Members) and Laboratory-Confirmed Influenza (All Beneficiaries)

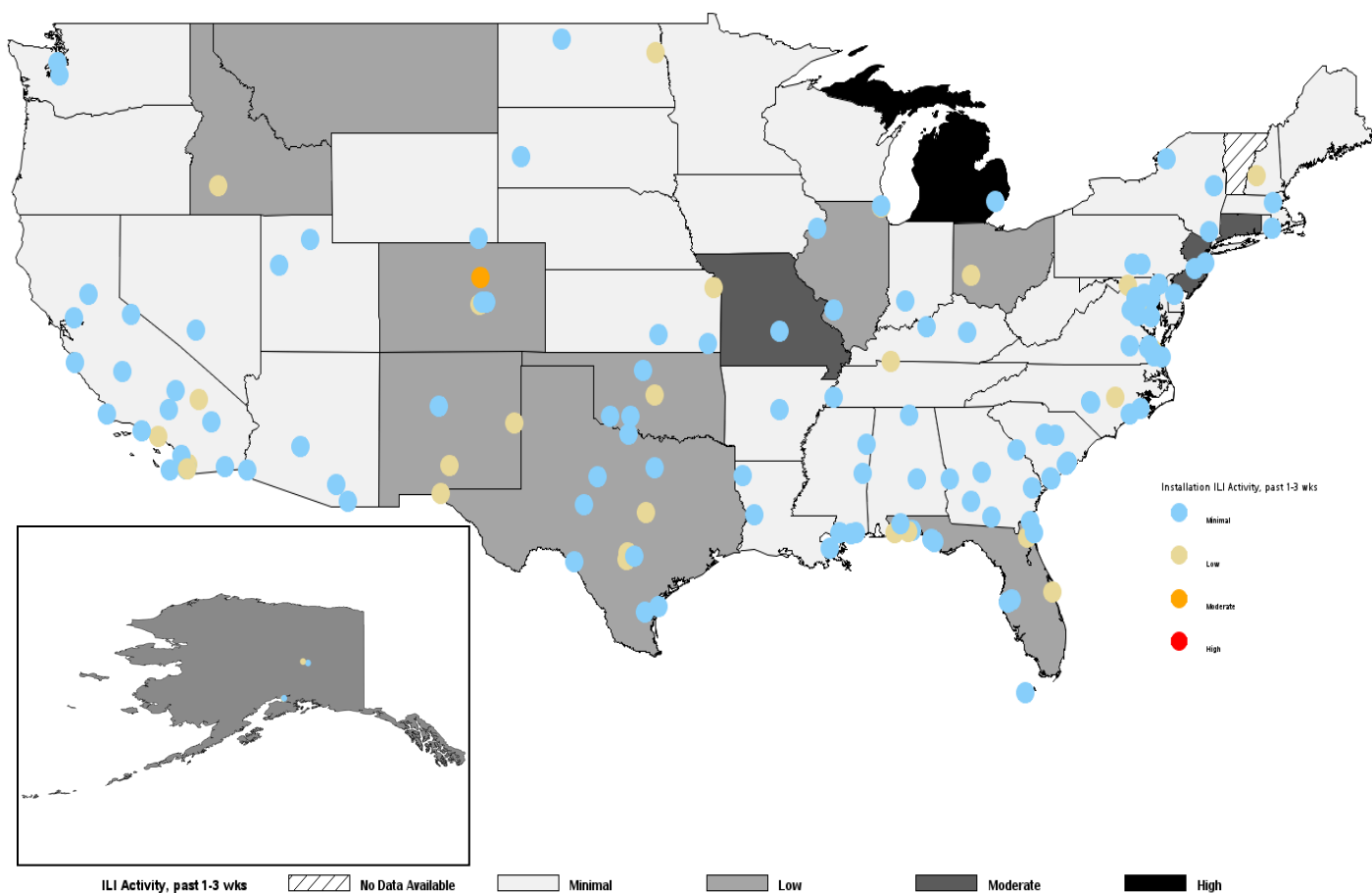


*Locations colored in dark gray have no service member medical encounter data.

Influenza Activity: USNORTHCOM (2023 2024 Season: Week 13)

- ILI activity at the installation level, averaged over weeks 10-12, was primarily minimal to low. However, one installation, Buckley Air Force Base, had moderate ILI activity.
- The majority of states had minimal to low ILI activity (averaged over weeks 10-12). However, Missouri, New Jersey, and Connecticut had moderate ILI activity and Michigan had high ILI activity.
- State level data includes both Military Treatment Facility (MTF) and outsourced care. Therefore, state activity levels may differ from the installation level data.
- Installation-level laboratory-confirmed influenza and COVID-19 case data can be found on pages 13-19 of the report.

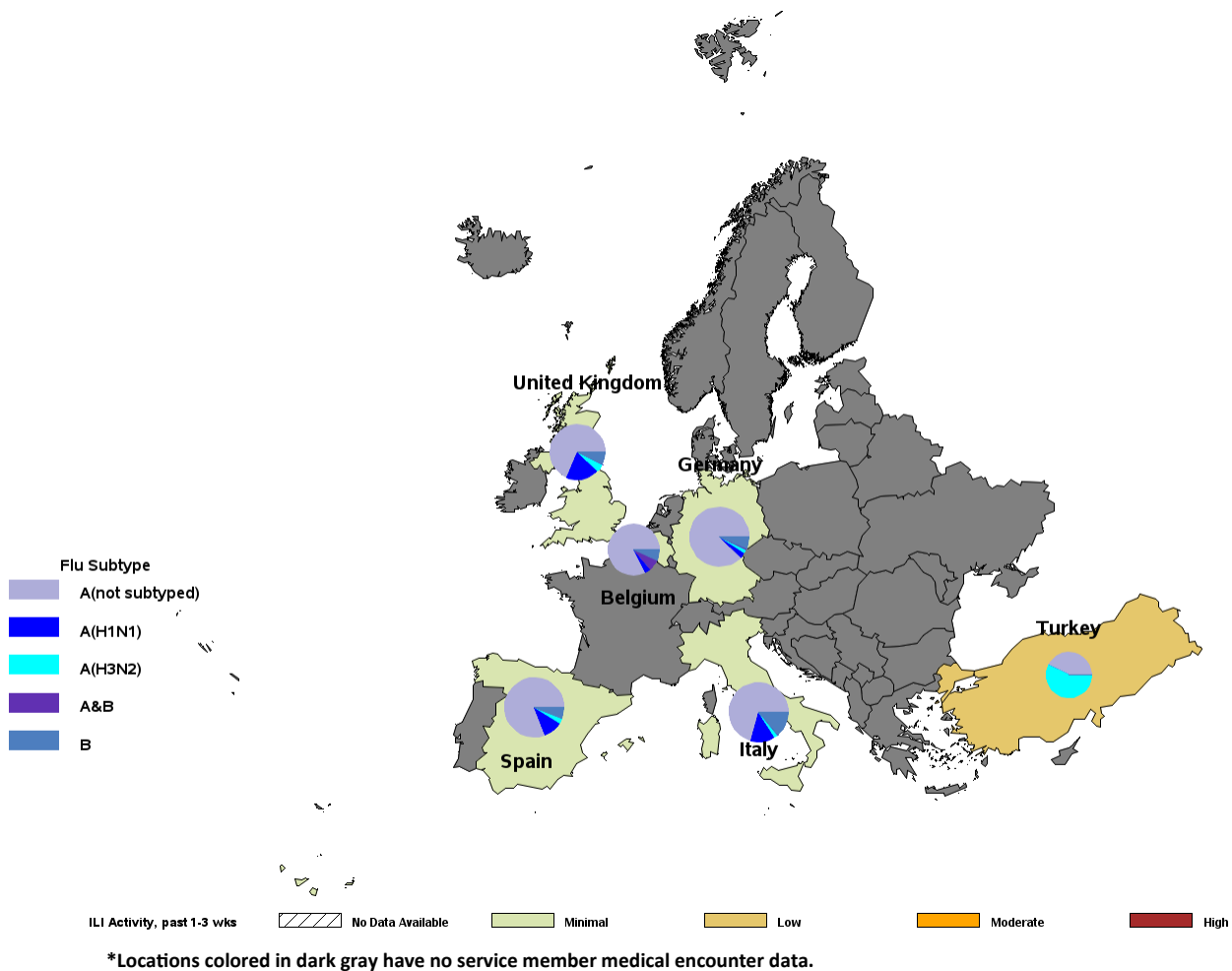
ILI Activity (Service Members) by State and Installation



Influenza and COVID-19 Activity: USEUCOM (2023-2024 Season: Week 13)

- ILI activity, averaged over weeks 10-12, was minimal across EUCOM, except for Turkey which had low activity.
- The majority of laboratory-confirmed influenza cases for USEUCOM have been Influenza A (not subtyped). Among subtyped specimens, A(H1N1) has predominated, except for Turkey where A(H3N2) has predominated.
- Installation-level laboratory-confirmed influenza and COVID-19 case data for USEUCOM can be found on page 8 of the report.

ILI Activity (Service Members) and Laboratory-Confirmed Influenza (All Beneficiaries)



Confirmed Influenza and COVID-19: USEUCOM (2023 2024 Season: Week 13)

Laboratory-Confirmed Influenza by Installation (All Beneficiaries)

| Country | Location | Service | A (not sub typed) | | A (H1N1) | | A (H3N2) | | A & B | | B | | Total positive | Total tested | % Positive | Change from past 2 weeks |
|----------------|-----------------------|---------|-------------------|--------|----------|--------|----------|--------|-------|--------|-------|--------|----------------|--------------|------------|--------------------------|
| | | | 2 wks | Season | 2 wks | Season | 2 wks | Season | 2 wks | Season | 2 wks | Season | 2 wks | Season | 2 wks | |
| Belgium | BRUSSELS | J | 0 | 4 | 0 | 0 | 0 | 0 | 0 | 0 | 0 | 2 | 0 | 2 | 0 | = |
| Belgium | SHAPE | J | 0 | 20 | 0 | 1 | 0 | 0 | 0 | 2 | 0 | 0 | 0 | 16 | 0 | = |
| Germany | BAUMHOLDER | J | 0 | 3 | 0 | 0 | 0 | 0 | 0 | 0 | 0 | 1 | 0 | 3 | 0 | = |
| Germany | GEILENKIRCHEN NATO AB | J | 1 | 5 | 0 | 0 | 0 | 0 | 0 | 1 | 0 | 2 | 1 | 9 | 11 | - |
| Germany | GRAFENWOEHR | J | 4 | 57 | 0 | 0 | 0 | 1 | 0 | 0 | 0 | 1 | 4 | 13 | 31 | - |
| Germany | HOHENFELS/AMBERG | J | 0 | 11 | 0 | 0 | 0 | 0 | 0 | 0 | 0 | 0 | 0 | 5 | 0 | = |
| Germany | KAISERSLAUTERN | J | 0 | 11 | 0 | 0 | 1 | 1 | 0 | 0 | 0 | 1 | 1 | 5 | 20 | - |
| Germany | LANDSTUHL | J | 6 | 123 | 1 | 2 | 0 | 0 | 0 | 1 | 1 | 6 | 8 | 82 | 10 | + |
| Germany | PATCH BARRACKS | J | 0 | 43 | 0 | 0 | 0 | 0 | 0 | 0 | 1 | 2 | 1 | 20 | 5 | - |
| Germany | RAMSTEIN AB | J | 0 | 5 | 0 | 0 | 0 | 2 | 0 | 0 | 0 | 3 | 0 | 4 | 0 | = |
| Germany | SPANGDAHLEM AB | J | 0 | 4 | 0 | 7 | 0 | 3 | 0 | 0 | 0 | 0 | 0 | 4 | 0 | = |
| Germany | URLAS | J | 1 | 6 | 0 | 1 | 0 | 0 | 0 | 0 | 0 | 0 | 1 | 8 | 13 | - |
| Germany | VILSECK | J | 2 | 24 | 0 | 0 | 0 | 0 | 0 | 0 | 0 | 4 | 2 | 19 | 11 | - |
| Italy | AVIANO AB | J | 0 | 4 | 0 | 0 | 0 | 0 | 0 | 0 | 0 | 0 | 0 | 6 | 0 | = |
| Italy | NAPLES | J | 0 | 42 | 0 | 0 | 0 | 0 | 0 | 0 | 0 | 2 | 0 | 18 | 0 | = |
| Italy | NAS SIGONELLA | J | 0 | 4 | 0 | 18 | 0 | 3 | 0 | 0 | 1 | 3 | 1 | 16 | 6 | - |
| Italy | VICENZA | J | 2 | 36 | 0 | 0 | 0 | 0 | 0 | 0 | 2 | 13 | 4 | 46 | 9 | - |
| Spain | ROTA | J | 0 | 55 | 0 | 7 | 0 | 2 | 0 | 0 | 0 | 4 | 0 | 19 | 0 | = |
| Turkey | INCIRLIK AB | J | 0 | 3 | 0 | 0 | 2 | 4 | 0 | 0 | 0 | 0 | 2 | 3 | 67 | - |
| United Kingdom | RAF CROUGHTON | J | 0 | 0 | 0 | 0 | 0 | 0 | 0 | 0 | 0 | 0 | 0 | 1 | 0 | = |
| United Kingdom | RAF LAKENHEATH | J | 0 | 28 | 0 | 8 | 0 | 2 | 0 | 0 | 0 | 3 | 0 | 31 | 0 | = |

COVID-19 Cases Since Week 40 by Installation (All Beneficiaries)

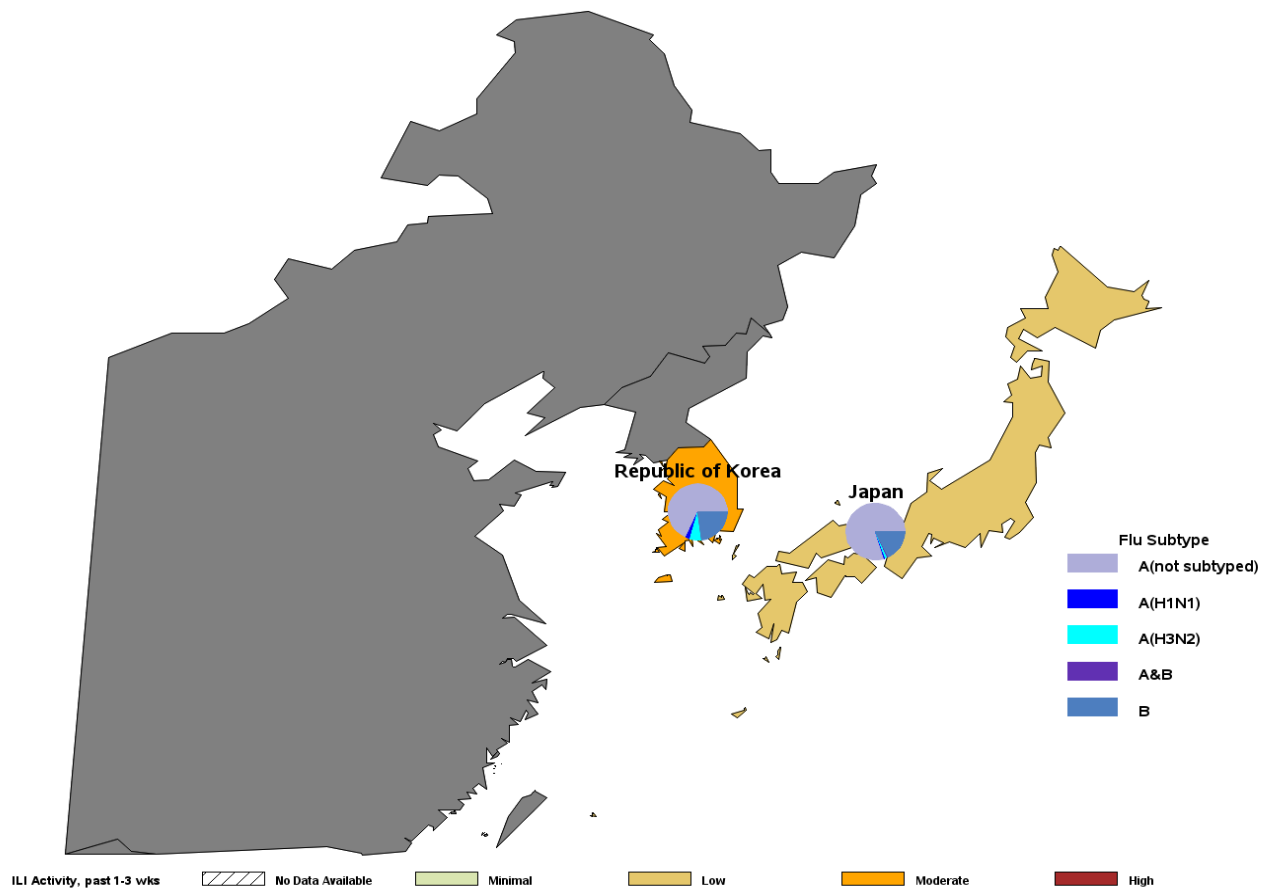
| Country | Location | Service | COVID 19 | | Change from past 2 weeks |
|----------------|----------------|---------|----------|---------------|--------------------------|
| | | | 2 wks | Since week 41 | |
| Germany | LANDSTUHL | J | 5 | 452 | = |
| Germany | RAMSTEIN AB | J | 1 | 21 | = |
| Germany | VILSECK | J | 3 | 201 | = |
| Italy | NAPLES | J | 1 | 57 | = |
| Italy | NAS SIGONELLA | J | 2 | 163 | = |
| Spain | ROTA | J | 2 | 40 | = |
| Turkey | INCIRLIK AB | J | 2 | 55 | = |
| United Kingdom | RAF LAKENHEATH | J | 1 | 149 | - |

“2 wks” in the tables is defined as labs collected 7-21 days prior to the current week of the report. This delay is due to delays in receiving data from MHS GENESIS.

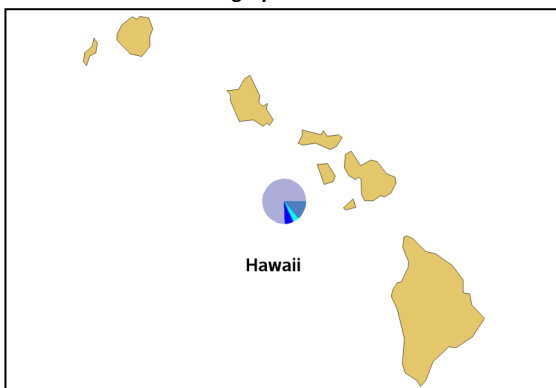
Influenza Activity: USINDOPACOM (2023 2024 Season: Week 13)

- ILI activity, averaged over weeks 10-12 remained moderate in the Republic of Korea, but was minimal to low in all other areas.
- The majority of laboratory-confirmed influenza cases for USINDOPACOM have been Influenza A (not subtyped). Among sub-typed specimens, A(H1N1) has predominated overall, but A(H3N2) has predominated in the Republic of Korea.
- Installation-level laboratory-confirmed influenza and COVID-19 case data for USINDOPACOM can be found on page 10 of the report.

ILI Activity (Service Members) and Laboratory-Confirmed Influenza (All Beneficiaries)



*Locations colored in dark gray have no service member medical encounter data.



Influenza Activity: USINDOPACOM (2023 2024 Season: Week 13)

Laboratory-Confirmed Influenza by Installation (All Beneficiaries)

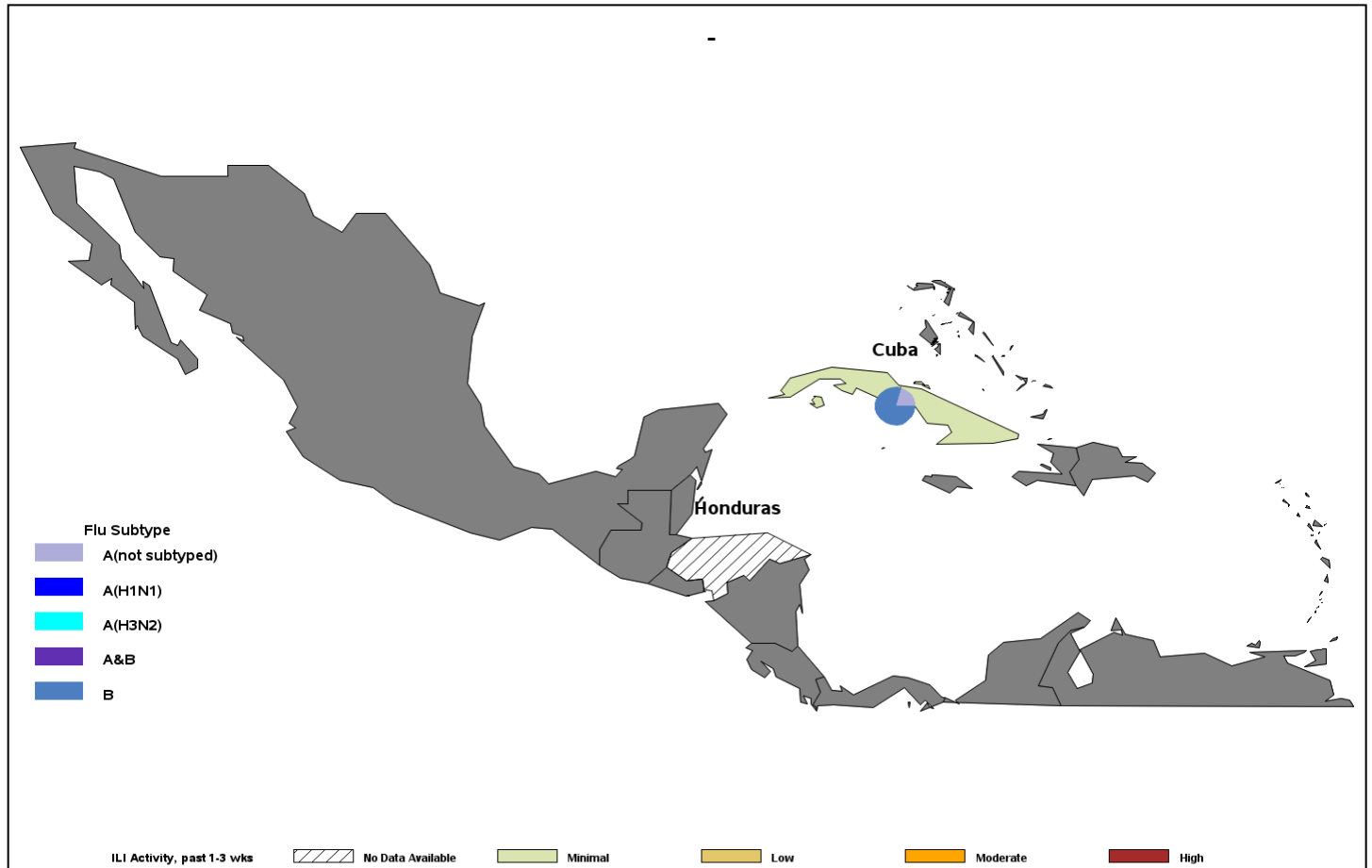
| Country | Location | Service | A (not sub typed) | | A (H1N1) | | A (H3N2) | | A & B | | B | | Total positive | Total tested | % Positive | Change from last report |
|--------------------|--------------------------------------|---------|-------------------|--------|----------|--------|----------|--------|-------|--------|-------|--------|----------------|--------------|------------|-------------------------|
| | | | 2 wks | Season | 2 wks | Season | 2 wks | Season | 2 wks | Season | 2 wks | Season | 2 wks | Season | 2 wks | |
| Guam | ANDERSEN JB | J | 1 | 30 | 0 | 0 | 0 | 0 | 0 | 0 | 0 | 1 | 1 | 60 | 2 | + |
| Guam | JOINT (NF) RGN MARIA-NAS GUAM-ANDRSN | J | 0 | 146 | 2 | 29 | 2 | 11 | 0 | 0 | 0 | 19 | 4 | 101 | 4 | = |
| Japan | ATSUGI | J | 0 | 14 | 0 | 0 | 0 | 0 | 0 | 0 | 2 | 4 | 2 | 15 | 13 | - |
| Japan | CAMP FUJI | J | 0 | 4 | 0 | 0 | 0 | 0 | 0 | 0 | 6 | 0 | 0 | 2 | 0 | = |
| Japan | CAMP ZAMA | J | 0 | 13 | 0 | 0 | 0 | 0 | 0 | 0 | 0 | 4 | 0 | 15 | 0 | = |
| Japan | KADENA AB | J | 0 | 15 | 0 | 1 | 2 | 2 | 0 | 0 | 0 | 5 | 2 | 9 | 22 | - |
| Japan | MCAS IWAKUNI | J | 0 | 38 | 0 | 0 | 0 | 0 | 0 | 0 | 1 | 13 | 1 | 18 | 6 | - |
| Japan | MISAWA AB | J | 0 | 26 | 0 | 2 | 0 | 1 | 0 | 0 | 0 | 1 | 0 | 16 | 0 | = |
| Japan | OKINAWA | J | 3 | 138 | 0 | 0 | 0 | 1 | 0 | 0 | 3 | 30 | 6 | 144 | 4 | - |
| Japan | SASEBO | J | 0 | 15 | 0 | 0 | 0 | 0 | 0 | 1 | 0 | 8 | 0 | 5 | 0 | = |
| Japan | YOKOSUKA | J | 3 | 74 | 0 | 1 | 0 | 1 | 0 | 0 | 8 | 16 | 11 | 46 | 24 | - |
| Japan | YOKOTA AB | J | 0 | 67 | 0 | 0 | 1 | 1 | 0 | 0 | 0 | 4 | 1 | 18 | 6 | - |
| Korea, Republic of | CAMP HUMPHREYS | J | 2 | 193 | 0 | 13 | 1 | 44 | 0 | 0 | 3 | 40 | 6 | 87 | 7 | - |
| Korea, Republic of | KOREA | J | 0 | 31 | 0 | 0 | 0 | 0 | 0 | 0 | 1 | 39 | 1 | 30 | 3 | - |
| Korea, Republic of | KUNSAN AB | J | 0 | 23 | 0 | 0 | 0 | 0 | 0 | 0 | 1 | 7 | 1 | 13 | 8 | + |
| Korea, Republic of | OSAN AB | J | 17 | 202 | 0 | 0 | 0 | 0 | 0 | 0 | 0 | 59 | 17 | 108 | 16 | + |
| Korea, Republic of | TAEGU | J | 0 | 32 | 0 | 3 | 0 | 3 | 0 | 0 | 0 | 13 | 0 | 21 | 0 | = |
| Korea, Republic of | TONGDUCHON | J | 0 | 1 | 0 | 0 | 0 | 0 | 0 | 0 | 0 | 2 | 0 | 3 | 0 | = |
| United States | FT SHAFTER | J | 5 | 212 | 0 | 49 | 4 | 34 | 0 | 0 | 3 | 40 | 12 | 520 | 2 | - |
| United States | JOINT (NF) BASE PEARL HARBOR-HICKAM | J | 3 | 36 | 0 | 1 | 0 | 2 | 0 | 0 | 0 | 13 | 3 | 36 | 8 | - |
| United States | KANEHOE | J | 1 | 58 | 0 | 0 | 0 | 0 | 0 | 0 | 0 | 8 | 1 | 31 | 3 | - |
| United States | SCHOFIELD BARRACKS | J | 15 | 398 | 0 | 11 | 0 | 4 | 0 | 1 | 2 | 65 | 17 | 356 | 5 | + |

COVID-19 Cases Since Week 40 by Installation (All Beneficiaries)

| Country | Location | Service | COVID 19 | | Change from past 2 weeks |
|--------------------|-------------------------------------|---------|----------|------------|--------------------------|
| | | | 2 wks | Since week | |
| Guam | ANDERSEN JB | J | 4 | 99 | - |
| Guam | JOINT (NF) RGN MARIANAS GUAM-ANDRSN | J | 4 | 164 | - |
| Japan | KADENA AB | J | 1 | 8 | = |
| Japan | MISAWA AB | J | 3 | 63 | - |
| Japan | CAMP ZAMA | J | 5 | 48 | = |
| Japan | OKINAWA | J | 14 | 256 | + |
| Japan | YOKOSUKA | J | 4 | 286 | - |
| Japan | YOKOTA AB | J | 2 | 34 | - |
| Korea, Republic of | CAMP HUMPHREYS | J | 23 | 516 | - |
| Korea, Republic of | OSAN AB | J | 4 | 400 | - |
| United States | FT SHAFTER | J | 27 | 1319 | - |
| United States | HICKAM JBHP | J | 2 | 65 | = |
| United States | JOINT (NF) BASE PEARL HARBOR-HICKAM | J | 3 | 176 | + |

"2 wks" in the tables is defined as labs collected 7-21 days prior to the current week of the report. This delay is due to delays in receiving data from MHS GENESIS.

- ILI activity was minimal in Cuba.
- Five laboratory-confirmed influenza cases have been reported in Cuba for the 2023-2024 season, 4 were influenza B and 1 was influenza A (not subtyped).



*Locations colored in dark gray have no service member medical encounter data.

Laboratory-Confirmed Influenza by Installation (All Beneficiaries)

| Country | Location | Service | A (not sub typed) | | A (H1N1) | | A (H3N2) | | A & B | | B | | Total positive | Total tested | % Positive | Change from last report |
|---------|----------------|---------|-------------------|--------|----------|--------|----------|--------|-------|--------|-------|--------|----------------|--------------|------------|-------------------------|
| | | | 2 wks | Season | 2 wks | Season | 2 wks | Season | 2 wks | Season | 2 wks | Season | | | | |
| Cuba | GUANTANAMO BAY | J | 0 | 1 | 0 | 0 | 0 | 0 | 0 | 0 | 0 | 4 | 0 | 2 | 0 | = |

COVID-19 Cases Since Week 40 by Installation (All Beneficiaries)

| Country | Location | Service | COVID 19 | | Change from past 2 weeks |
|---------|----------------|---------|----------|---------------|--------------------------|
| | | | 2 wks | Since week 41 | |
| Cuba | GUANTANAMO BAY | J | 2 | 22 | - |

“2 wks” in the tables is defined as labs collected 7-21 days prior to the current week of the report. This delay is due to delays in receiving data from MHS GENESIS.

Influenza Activity: USCENTCOM (2023-2024 Season: Week 13)

- ILI activity, averaged over weeks 10-12, was minimal in USCENTCOM countries with data.

ILI Activity (Service Members)



*Locations colored in dark gray have no service member medical encounter data.

USNORTHCOM Laboratory-Confirmed Influenza

(2023-2024 Season: Week 13)

Laboratory-Confirmed Influenza (All Beneficiaries) by Installation Alaska through Connecticut

*Reporting of laboratory data from MHS GENESIS is typically delayed by 2 weeks

| State | Location | Service | A (not sub typed) | | A (H1N1) | | A (H3N2) | | A & B | | B | | Total positive | Total tested | % Positive | Change from last report |
|-------|-------------------------------------|---------|-------------------|--------|----------|--------|----------|--------|-------|--------|-------|--------|----------------|--------------|------------|-------------------------|
| | | | 2 wks | Season | 2 wks | Season | 2 wks | Season | 2 wks | Season | 2 wks | Season | 2 wks | 2 wks | 2 wks | |
| AK | EIELSON AFB | J | 0 | 22 | 0 | 0 | 0 | 0 | 0 | 0 | 0 | 0 | 0 | 3 | 0 | = |
| AK | ELMENDORF JBER | J | 11 | 166 | 0 | 30 | 1 | 5 | 0 | 1 | 9 | 41 | 21 | 111 | 19 | - |
| AK | FT GREELY | J | 2 | 3 | 0 | 0 | 0 | 0 | 0 | 0 | 0 | 0 | 2 | 4 | 50 | = |
| AK | FT WAINWRIGHT | J | 18 | 394 | 0 | 0 | 0 | 0 | 0 | 2 | 21 | 90 | 39 | 211 | 18 | - |
| AK | JOINT (AF) BSE ELMENDORF-RICHARDSON | J | 1 | 1 | 0 | 0 | 0 | 0 | 0 | 0 | 1 | 2 | 2 | 4 | 50 | - |
| AL | ATC MOBILE | C | 0 | 0 | 0 | 0 | 0 | 0 | 0 | 0 | 0 | 0 | 0 | 0 | 0 | = |
| AL | FT NOVOSEL | J | 2 | 49 | 0 | 0 | 0 | 0 | 0 | 0 | 2 | 25 | 4 | 30 | 13 | - |
| AL | MAXWELL AFB | J | 7 | 107 | 1 | 2 | 0 | 0 | 0 | 0 | 1 | 33 | 9 | 80 | 11 | - |
| AL | REDSTONE ARSENAL | J | 3 | 37 | 0 | 0 | 0 | 0 | 0 | 2 | 1 | 43 | 4 | 24 | 17 | + |
| AR | LITTLE ROCK AFB | J | 2 | 58 | 0 | 0 | 0 | 0 | 0 | 2 | 1 | 17 | 3 | 21 | 14 | - |
| AZ | DAVIS-MONTHAN AFB | J | 0 | 19 | 0 | 1 | 0 | 0 | 0 | 0 | 0 | 17 | 0 | 11 | 0 | = |
| AZ | FT HUACHUCA | J | 0 | 28 | 0 | 0 | 0 | 0 | 0 | 0 | 1 | 11 | 1 | 21 | 5 | - |
| AZ | LUKE AFB | J | 1 | 86 | 0 | 0 | 0 | 0 | 0 | 0 | 1 | 22 | 2 | 55 | 4 | - |
| AZ | YUMA | J | 1 | 3 | 0 | 1 | 0 | 0 | 0 | 0 | 0 | 7 | 1 | 12 | 8 | - |
| AZ | YUMA PROVING GROUND | J | 0 | 0 | 0 | 0 | 0 | 0 | 0 | 0 | 0 | 0 | 1 | 0 | 0 | = |
| CA | BEALE AFB | J | 1 | 3 | 0 | 2 | 0 | 0 | 0 | 0 | 1 | 7 | 2 | 17 | 12 | + |
| CA | CAMP PENDLETON | J | 13 | 436 | 0 | 6 | 0 | 2 | 0 | 1 | 7 | 74 | 20 | 523 | 4 | + |
| CA | CHINA LAKE | J | 0 | 5 | 0 | 0 | 0 | 0 | 0 | 0 | 0 | 2 | 0 | 5 | 0 | = |
| CA | CORONADO | J | 0 | 1 | 0 | 5 | 0 | 1 | 0 | 0 | 0 | 1 | 0 | 5 | 0 | = |
| CA | EDWARDS AFB | J | 0 | 1 | 0 | 0 | 0 | 0 | 0 | 0 | 0 | 0 | 0 | 0 | 0 | = |
| CA | EL CENTRO | J | 0 | 2 | 0 | 0 | 0 | 0 | 0 | 0 | 0 | 0 | 0 | 1 | 0 | = |
| CA | FT IRWIN | J | 11 | 146 | 0 | 0 | 0 | 0 | 0 | 0 | 2 | 44 | 13 | 121 | 11 | - |
| CA | ISC ALAMEDA | C | 0 | 2 | 0 | 0 | 0 | 0 | 0 | 0 | 0 | 0 | 0 | 0 | 0 | = |
| CA | ISC SAN PEDRO | C | 0 | 0 | 0 | 0 | 0 | 0 | 0 | 0 | 0 | 0 | 0 | 0 | 0 | = |
| CA | LEMOORE | J | 0 | 9 | 0 | 12 | 0 | 4 | 0 | 0 | 4 | 13 | 4 | 47 | 9 | - |
| CA | LOS ANGELES AFB | J | 0 | 0 | 0 | 0 | 0 | 0 | 0 | 0 | 0 | 0 | 0 | 2 | 0 | = |
| CA | MONTEREY | J | 0 | 2 | 0 | 0 | 0 | 0 | 0 | 0 | 0 | 0 | 0 | 1 | 0 | = |
| CA | POINT MUGU | J | 0 | 0 | 0 | 0 | 0 | 0 | 0 | 0 | 0 | 0 | 0 | 0 | 0 | = |
| CA | PORT HUENEME | J | 0 | 5 | 0 | 0 | 0 | 0 | 0 | 0 | 0 | 1 | 0 | 2 | 0 | = |
| CA | SAN DIEGO | J | 0 | 57 | 3 | 331 | 14 | 260 | 0 | 1 | 7 | 112 | 24 | 587 | 4 | - |
| CA | TEMECULA | J | 0 | 12 | 0 | 0 | 0 | 0 | 0 | 0 | 0 | 3 | 0 | 10 | 0 | = |
| CA | TRAINING CENTER PETALUMA | C | 0 | 1 | 0 | 0 | 0 | 0 | 0 | 0 | 0 | 0 | 0 | 1 | 0 | = |
| CA | TRAVIS AFB | J | 2 | 119 | 1 | 2 | 0 | 0 | 0 | 0 | 0 | 17 | 3 | 152 | 2 | + |
| CA | TWENTYNINE PALMS | J | 2 | 60 | 0 | 0 | 0 | 0 | 0 | 0 | 7 | 23 | 9 | 78 | 12 | - |
| CA | VANDENBERG SFB | J | 1 | 13 | 0 | 0 | 0 | 0 | 0 | 0 | 0 | 1 | 1 | 19 | 5 | + |
| CO | BUCKLEY SFB | J | 0 | 54 | 0 | 0 | 0 | 0 | 0 | 0 | 1 | 20 | 1 | 12 | 8 | - |
| CO | FT CARSON | J | 35 | 833 | 0 | 1 | 0 | 1 | 3 | 16 | 52 | 521 | 90 | 492 | 18 | - |
| CO | PETERSON SFB | J | 2 | 76 | 0 | 0 | 0 | 0 | 0 | 0 | 0 | 55 | 2 | 28 | 7 | - |
| CO | SCHRIEVER SFB | J | 1 | 7 | 0 | 0 | 0 | 0 | 0 | 0 | 0 | 2 | 1 | 7 | 14 | - |
| CO | USAF ACADEMY | J | 43 | 209 | 0 | 0 | 0 | 2 | 0 | 0 | 5 | 62 | 48 | 118 | 41 | + |
| CT | COAST GUARD ACADEMY | C | 1 | 8 | 0 | 0 | 0 | 0 | 0 | 0 | 0 | 1 | 1 | 9 | 11 | + |
| CT | GROTON | J | 3 | 29 | 0 | 0 | 0 | 1 | 0 | 3 | 4 | 28 | 7 | 43 | 16 | + |

"2 wks" in the table is defined as labs collected 7-21 days prior to the current week of the report. This delay is due to delays in receiving data from MHS GENESIS.

USNORTHCOM Laboratory-Confirmed Influenza

(2023-2024 Season: Week 13)

Laboratory-Confirmed Influenza (All Beneficiaries) by Installation District of Columbia through Georgia

*Reporting of laboratory data from MHS GENESIS is typically delayed by 2 weeks

| State | Location | Service | A (not sub typed) | | A (H1N1) | | A (H3N2) | | A & B | | B | | Total positive | Total tested | % Positive | Change from last report |
|-------|------------------------------|---------|-------------------|--------|----------|--------|----------|--------|-------|--------|-------|--------|----------------|--------------|------------|-------------------------|
| | | | 2 wks | Season | 2 wks | Season | 2 wks | Season | 2 wks | Season | 2 wks | Season | 2 wks | Season | 2 wks | |
| DC | BOLLING JBAB | J | 0 | 17 | 0 | 0 | 0 | 0 | 0 | 0 | 0 | 1 | 0 | 11 | 0 | = |
| DC | HEADQUARTERS SUPPORT COMMAND | C | 0 | 0 | 0 | 0 | 0 | 0 | 0 | 0 | 0 | 0 | 0 | 1 | 0 | = |
| DC | PENTAGON | J | 1 | 59 | 0 | 0 | 0 | 0 | 0 | 0 | 1 | 4 | 2 | 45 | 4 | - |
| DC | WASHINGTON DC | J | 0 | 4 | 0 | 0 | 0 | 0 | 0 | 0 | 0 | 0 | 0 | 1 | 0 | = |
| DE | DOVER AFB | J | 0 | 26 | 0 | 0 | 0 | 1 | 0 | 0 | 3 | 13 | 3 | 15 | 20 | + |
| FL | AIR STATION CLEARWATER | C | 0 | 3 | 0 | 0 | 0 | 0 | 0 | 0 | 0 | 0 | 0 | 1 | 0 | = |
| FL | AIR STATION MIAMI | C | 0 | 1 | 0 | 0 | 0 | 0 | 0 | 0 | 0 | 0 | 0 | 0 | 0 | = |
| FL | ARMY GARRISON MIAMI | J | 2 | 10 | 0 | 0 | 0 | 0 | 0 | 0 | 2 | 2 | 2 | 16 | 13 | + |
| FL | BASE MIAMI | C | 0 | 0 | 0 | 0 | 0 | 0 | 0 | 0 | 0 | 0 | 0 | 0 | 0 | = |
| FL | EGLIN AFB | J | 0 | 160 | 0 | 7 | 0 | 0 | 0 | 0 | 1 | 72 | 1 | 92 | 1 | - |
| FL | GROUP ST PETERSBURG | C | 0 | 0 | 0 | 0 | 0 | 0 | 0 | 0 | 0 | 0 | 0 | 0 | 0 | = |
| FL | HURLBURT FIELD | J | 0 | 36 | 0 | 0 | 0 | 0 | 0 | 0 | 1 | 16 | 1 | 17 | 6 | - |
| FL | JACKSONVILLE | J | 11 | 218 | 0 | 0 | 0 | 0 | 0 | 5 | 8 | 220 | 19 | 204 | 9 | + |
| FL | KEY WEST | J | 0 | 1 | 0 | 0 | 0 | 0 | 0 | 0 | 0 | 13 | 0 | 1 | 0 | = |
| FL | MACDILL AFB | J | 1 | 28 | 0 | 0 | 0 | 3 | 0 | 1 | 2 | 14 | 3 | 25 | 12 | + |
| FL | MAYPORT | J | 1 | 21 | 0 | 0 | 0 | 0 | 0 | 2 | 0 | 13 | 1 | 11 | 9 | + |
| FL | MILTON | J | 0 | 19 | 0 | 0 | 0 | 0 | 0 | 2 | 0 | 23 | 0 | 23 | 0 | = |
| FL | PANAMA CITY | J | 0 | 1 | 0 | 0 | 0 | 0 | 0 | 0 | 0 | 0 | 0 | 0 | 0 | = |
| FL | PATRICK SFB | J | 0 | 28 | 0 | 0 | 0 | 0 | 0 | 0 | 1 | 21 | 1 | 42 | 2 | + |
| FL | PENSACOLA | J | 7 | 198 | 0 | 0 | 0 | 0 | 0 | 0 | 3 | 109 | 10 | 390 | 3 | - |
| FL | SABAL PARK CLINIC | J | 0 | 30 | 0 | 0 | 0 | 0 | 0 | 1 | 1 | 13 | 1 | 8 | 13 | - |
| FL | TYNDALL AFB | J | 3 | 32 | 0 | 0 | 0 | 0 | 0 | 0 | 5 | 44 | 8 | 76 | 11 | - |
| GA | ALBANY | J | 0 | 2 | 0 | 0 | 0 | 0 | 0 | 0 | 1 | 8 | 1 | 5 | 20 | + |
| GA | FT EISENHOWER | J | 4 | 306 | 1 | 11 | 0 | 0 | 0 | 0 | 1 | 150 | 6 | 110 | 5 | - |
| GA | FT MOORE | J | 12 | 252 | 0 | 0 | 0 | 0 | 0 | 2 | 0 | 97 | 12 | 176 | 7 | - |
| GA | FT STEWART | J | 5 | 159 | 0 | 3 | 0 | 0 | 0 | 1 | 1 | 79 | 6 | 74 | 8 | - |
| GA | HUNTER ARMY AIRFIELD | J | 4 | 41 | 0 | 0 | 0 | 0 | 0 | 0 | 1 | 23 | 5 | 50 | 10 | = |
| GA | KINGS BAY | J | 3 | 21 | 0 | 0 | 0 | 0 | 0 | 1 | 1 | 42 | 4 | 8 | 50 | - |
| GA | MOODY AFB | J | 1 | 17 | 0 | 2 | 0 | 1 | 0 | 0 | 1 | 6 | 2 | 17 | 12 | + |
| GA | ROBINS AFB | J | 0 | 1 | 1 | 48 | 0 | 8 | 0 | 0 | 1 | 32 | 2 | 63 | 3 | = |

"2 wks" in the table is defined as labs collected 7-21 days prior to the current week of the report. This delay is due to delays in receiving data from MHS GENESIS.

USNORTHCOM COVID-19 Cases

(2023-2024 Season: Week 13)

COVID-19 Cases Since Week 40 (All Beneficiaries) by Installation Alaska through Georgia

*Reporting of laboratory data from MHS GENESIS is typically delayed by 2 weeks

| State | Location | Service | COVID 19 | | Change from last report |
|-------|------------------------------|---------|----------|---------------|-------------------------|
| | | | 2 wks | Since week 41 | |
| AK | EIELSON AFB | J | 0 | 34 | = |
| AK | ELMENDORF JBER | J | 3 | 234 | - |
| AK | FT WAINWRIGHT | J | 8 | 405 | - |
| AL | ATC MOBILE | C | 0 | 1 | = |
| AL | FT NOVOSSEL | J | 1 | 53 | - |
| AL | MAXWELL AFB | J | 16 | 215 | - |
| AL | REDSTONE ARSENAL | J | 5 | 88 | + |
| AR | LITTLE ROCK AFB | J | 2 | 74 | - |
| AZ | DAVIS-MONTHAN AFB | J | 2 | 152 | - |
| AZ | FT HUACHUCA | J | 4 | 51 | = |
| AZ | LUKE AFB | J | 5 | 268 | - |
| CA | BEALE AFB | J | 0 | 31 | = |
| CA | CAMP PENDLETON | J | 17 | 976 | - |
| CA | EDWARDS AFB | J | 0 | 9 | = |
| CA | FT IRWIN | J | 4 | 254 | - |
| CA | ISC ALAMEDA | C | 3 | 14 | + |
| CA | LEMOORE | J | 1 | 84 | - |
| CA | MONTEREY | J | 0 | 3 | = |
| CA | SAN DIEGO | J | 13 | 860 | - |
| CA | TRAVIS AFB | J | 8 | 274 | - |
| CA | TWENTYNINE PALMS | J | 4 | 266 | + |
| CA | VANDENBERG SFB | J | 0 | 41 | = |
| CO | BUCKLEY SFB | J | 2 | 109 | + |
| CO | FT CARSON | J | 28 | 1169 | - |
| CO | PETERSON SFB | J | 5 | 75 | = |
| CO | USAF ACADEMY | J | 7 | 283 | - |
| CT | COAST GUARD ACADEMY | C | 0 | 42 | = |
| CT | GROTON | J | 0 | 1 | = |
| DC | HEADQUARTERS SUPPORT COMMAND | C | 0 | 6 | = |
| DE | DOVER AFB | J | 0 | 109 | = |
| FL | AIR STATION CLEARWATER | C | 1 | 9 | = |
| FL | AIR STATION MIAMI | C | 0 | 2 | = |
| FL | EGLIN AFB | J | 9 | 275 | + |
| FL | HURLBURT FIELD | J | 0 | 64 | = |
| FL | JACKSONVILLE | J | 12 | 491 | - |
| FL | MACDILL AFB | J | 2 | 76 | - |
| FL | MAYPORT | J | 0 | 1 | = |
| FL | PATRICK SFB | J | 2 | 36 | + |
| FL | PENSACOLA | J | 18 | 617 | - |
| FL | TYNDALL AFB | J | 3 | 86 | - |
| GA | FT EISENHOWER | J | 9 | 669 | - |
| GA | FT MOORE | J | 13 | 478 | - |
| GA | FT STEWART | J | 9 | 295 | - |
| GA | HUNTER ARMY AIRFIELD | J | 0 | 10 | = |
| GA | KINGS BAY | J | 0 | 2 | = |
| GA | MOODY AFB | J | 2 | 37 | + |
| GA | ROBINS AFB | J | 6 | 200 | = |

"2 wks" in the table is defined as labs collected 7-21 days prior to the current week of the report. This delay is due to delays in receiving data from MHS GENESIS.

USNORTHCOM Laboratory-Confirmed Influenza

(2023-2024 Season: Week 13)

Laboratory-Confirmed Influenza (All Beneficiaries) by Installation Idaho through New York

*Reporting of laboratory data from MHS GENESIS is typically delayed by 2 weeks

| State | Location | Service | A (not subtyped) | | A (H1N1) | | A (H3N2) | | A & B | | B | | Total positive | Total tested | % Positive | Change from last |
|-------|---------------------------|---------|------------------|--------|----------|--------|----------|--------|-------|--------|-------|--------|----------------|--------------|------------|------------------|
| | | | 2 wks | Season | 2 wks | Season | 2 wks | Season | 2 wks | Season | 2 wks | Season | 2 wks | Season | 2 wks | |
| ID | MOUNTAIN HOME AFB | J | 0 | 5 | 0 | 0 | 0 | 0 | 0 | 0 | 0 | 2 | 0 | 1 | 0 | = |
| IL | GREAT LAKES | J | 0 | 12 | 0 | 9 | 0 | 8 | 0 | 0 | 3 | 5 | 3 | 41 | 7 | + |
| IL | NORTH CHICAGO | J | 0 | 225 | 1 | 108 | 1 | 267 | 0 | 0 | 2 | 39 | 4 | 24 | 17 | + |
| IL | ROCK ISLAND ARSENAL | J | 0 | 5 | 0 | 0 | 0 | 0 | 0 | 0 | 1 | 8 | 1 | 3 | 33 | + |
| IL | SCOTT AFB | J | 0 | 1 | 0 | 22 | 0 | 8 | 0 | 0 | 1 | 15 | 1 | 17 | 6 | - |
| KS | FT LEAVENWORTH | J | 4 | 38 | 0 | 0 | 0 | 0 | 0 | 0 | 1 | 17 | 5 | 34 | 15 | - |
| KS | FT RILEY | J | 12 | 132 | 0 | 1 | 0 | 0 | 0 | 1 | 11 | 86 | 23 | 109 | 21 | + |
| KS | MCCONNELL AFB | J | 1 | 25 | 0 | 0 | 0 | 0 | 0 | 1 | 0 | 11 | 1 | 18 | 6 | - |
| KY | FT CAMPBELL | J | 18 | 317 | 0 | 0 | 0 | 1 | 0 | 7 | 16 | 409 | 34 | 223 | 15 | + |
| KY | FT KNOX | J | 4 | 60 | 0 | 0 | 0 | 0 | 1 | 10 | 15 | 131 | 20 | 92 | 22 | - |
| LA | BARKSDALE AFB | J | 0 | 31 | 0 | 1 | 0 | 0 | 0 | 1 | 2 | 47 | 2 | 29 | 7 | - |
| LA | FT JOHNSON | J | 11 | 127 | 0 | 0 | 0 | 0 | 0 | 0 | 3 | 82 | 14 | 126 | 11 | - |
| LA | NEW ORLEANS | J | 2 | 9 | 0 | 0 | 0 | 0 | 0 | 1 | 0 | 18 | 2 | 16 | 13 | - |
| MA | AIR STATION CAPE COD | C | 0 | 0 | 0 | 0 | 0 | 0 | 0 | 0 | 0 | 0 | 0 | 3 | 0 | = |
| MA | HANSCOM AFB | J | 0 | 5 | 0 | 4 | 0 | 2 | 0 | 0 | 0 | 4 | 0 | 2 | 0 | = |
| MA | ISC BOSTON | C | 0 | 1 | 0 | 0 | 0 | 0 | 0 | 0 | 0 | 0 | 0 | 0 | 0 | = |
| MD | ABERDEEN PROVING GROUND | J | 1 | 14 | 0 | 0 | 0 | 0 | 0 | 0 | 1 | 5 | 2 | 24 | 8 | + |
| MD | ANDREWS JBA | J | 4 | 164 | 0 | 2 | 0 | 2 | 0 | 0 | 8 | 37 | 12 | 99 | 12 | + |
| MD | ANNAPOLIS | J | 3 | 122 | 0 | 0 | 0 | 1 | 0 | 0 | 0 | 6 | 3 | 18 | 17 | - |
| MD | BALTIMORE YARD | C | 0 | 0 | 0 | 0 | 0 | 0 | 0 | 0 | 0 | 0 | 0 | 1 | 0 | = |
| MD | BETHESDA | J | 15 | 266 | 0 | 45 | 1 | 21 | 0 | 0 | 10 | 68 | 26 | 264 | 10 | - |
| MD | FT DETRICK | J | 3 | 37 | 0 | 0 | 0 | 0 | 0 | 0 | 3 | 25 | 6 | 39 | 15 | - |
| MD | FT MEADE | J | 4 | 58 | 0 | 0 | 0 | 0 | 0 | 0 | 7 | 32 | 11 | 68 | 16 | + |
| MD | INDIAN HEAD | J | 0 | 4 | 0 | 0 | 0 | 0 | 0 | 0 | 2 | 4 | 2 | 6 | 33 | - |
| MD | PATUXENT RIVER | J | 1 | 18 | 0 | 0 | 0 | 0 | 0 | 0 | 2 | 8 | 3 | 19 | 16 | + |
| MI | AIR STATION TRAVERSE CITY | C | 0 | 0 | 0 | 0 | 0 | 0 | 0 | 0 | 0 | 0 | 0 | 0 | 0 | = |
| MI | SECTOR DETROIT | C | 0 | 0 | 0 | 0 | 0 | 0 | 0 | 0 | 0 | 0 | 0 | 0 | 0 | = |
| MO | FT LEONARD WOOD | J | 22 | 434 | 0 | 1 | 0 | 0 | 1 | 4 | 36 | 191 | 59 | 282 | 21 | - |
| MO | WHITEMAN AFB | J | 4 | 48 | 1 | 11 | 0 | 3 | 0 | 0 | 1 | 20 | 6 | 39 | 15 | + |
| MS | COLUMBUS AFB | J | 0 | 10 | 0 | 0 | 0 | 0 | 0 | 0 | 0 | 12 | 0 | 0 | 0 | = |
| MS | GULFPORT | J | 1 | 18 | 0 | 0 | 0 | 0 | 0 | 1 | 3 | 21 | 4 | 16 | 25 | - |
| MS | KEESLER AFB | J | 2 | 118 | 0 | 10 | 0 | 0 | 0 | 0 | 0 | 40 | 2 | 104 | 2 | + |
| MS | MERIDIAN | J | 1 | 11 | 0 | 0 | 0 | 0 | 0 | 0 | 0 | 13 | 1 | 20 | 5 | + |
| MT | MALMSTROM AFB | J | 3 | 100 | 0 | 0 | 0 | 0 | 0 | 0 | 4 | 14 | 7 | 51 | 14 | - |
| NC | CAMP LEJEUNE | J | 10 | 335 | 1 | 19 | 0 | 1 | 0 | 2 | 13 | 236 | 24 | 182 | 13 | + |
| NC | CHERRY POINT | J | 1 | 28 | 0 | 2 | 0 | 1 | 0 | 0 | 6 | 49 | 7 | 25 | 28 | - |
| NC | FT LIBERTY | J | 20 | 844 | 1 | 32 | 0 | 6 | 0 | 7 | 12 | 568 | 33 | 507 | 7 | + |
| NC | SEYMOUR JOHNSON AFB | J | 0 | 24 | 0 | 9 | 0 | 1 | 0 | 1 | 1 | 30 | 1 | 27 | 4 | - |
| ND | GRAND FORKS AFB | J | 1 | 28 | 0 | 0 | 0 | 0 | 0 | 0 | 0 | 2 | 1 | 8 | 13 | + |
| ND | MINOT AFB | J | 0 | 10 | 0 | 6 | 0 | 0 | 0 | 1 | 1 | 1 | 1 | 10 | 10 | - |
| NE | OFFUTT AFB | J | 1 | 9 | 1 | 2 | 1 | 2 | 0 | 0 | 1 | 8 | 4 | 9 | 44 | - |
| NH | PORTSMOUTH | J | 2 | 15 | 0 | 0 | 0 | 0 | 0 | 0 | 0 | 3 | 2 | 6 | 33 | - |
| NJ | MCGUIRE JBMDL | J | 1 | 38 | 0 | 3 | 0 | 2 | 0 | 0 | 1 | 14 | 2 | 38 | 5 | - |
| NJ | TRAINING CENTER CAPE MAY | C | 5 | 74 | 0 | 0 | 0 | 5 | 0 | 1 | 0 | 12 | 5 | 21 | 24 | - |
| NM | CANNON AFB | J | 1 | 44 | 0 | 0 | 1 | 2 | 0 | 0 | 0 | 37 | 2 | 51 | 4 | = |
| NM | HOLLOMAN AFB | J | 3 | 40 | 0 | 0 | 0 | 0 | 0 | 0 | 1 | 13 | 4 | 39 | 10 | + |
| NM | KIRTLAND AFB | J | 3 | 34 | 0 | 0 | 0 | 0 | 0 | 0 | 1 | 8 | 4 | 24 | 17 | - |
| NM | WHITE SANDS MISSILE RANGE | J | 1 | 8 | 0 | 0 | 0 | 0 | 0 | 0 | 0 | 2 | 1 | 3 | 33 | + |
| NV | FALLON | J | 0 | 6 | 0 | 0 | 0 | 0 | 0 | 0 | 0 | 13 | 0 | 4 | 0 | = |
| NV | NELLIS AFB | J | 5 | 208 | 1 | 62 | 1 | 7 | 0 | 0 | 6 | 74 | 13 | 136 | 10 | + |
| NY | FT DRUM | J | 3 | 18 | 0 | 0 | 4 | 4 | 0 | 0 | 1 | 8 | 8 | 30 | 27 | - |
| NY | SARATOGA SPRINGS | J | 0 | 0 | 0 | 0 | 0 | 0 | 0 | 0 | 0 | 0 | 0 | 0 | 0 | = |
| NY | SECTOR NEW YORK | C | 0 | 1 | 0 | 0 | 0 | 0 | 0 | 0 | 0 | 0 | 0 | 4 | 0 | = |
| NY | WEST POINT | J | 2 | 49 | 0 | 0 | 0 | 0 | 0 | 0 | 3 | 9 | 5 | 19 | 26 | - |

"2 wks" in the table is defined as labs collected 7-21 days prior to the current week of the report. This delay is due to delays in receiving data from MHS GENESIS.

USNORTHCOM COVID-19 Cases

(2023-2024 Season: Week 13)

COVID-19 Cases Since Week 40 (All Beneficiaries) by Installation Idaho through New York

*Reporting of laboratory data from MHS GENESIS is typically delayed by 2 weeks

| State | Location | Service | COVID 19 | | Change from last report |
|-------|-------------------------------|---------|----------|---------------|-------------------------|
| | | | 2 wks | Since week 41 | |
| ID | MOUNTAIN HOME AFB | J | 0 | 61 | = |
| IL | GREAT LAKES | J | 0 | 96 | = |
| IL | NORTH CHICAGO | J | 0 | 758 | = |
| IL | SCOTT AFB | J | 1 | 94 | = |
| KS | FT LEAVENWORTH | J | 3 | 106 | + |
| KS | FT RILEY | J | 7 | 357 | - |
| KS | MCCONNELL AFB | J | 0 | 99 | = |
| KY | FT CAMPBELL | J | 14 | 543 | - |
| KY | FT KNOX | J | 12 | 181 | - |
| LA | BARKSDALE AFB | J | 1 | 143 | - |
| LA | FT JOHNSON | J | 6 | 158 | = |
| MA | HANSCOM AFB | J | 0 | 13 | = |
| MD | ANDREWS JBA | J | 5 | 294 | = |
| MD | ANNAPOLIS | J | 1 | 76 | = |
| MD | BALTIMORE YARD | C | 0 | 2 | = |
| MD | BETHESDA | J | 19 | 588 | + |
| MD | FT MEADE | J | 11 | 259 | + |
| MD | PATUXENT RIVER | J | 2 | 43 | + |
| MI | AIR STATION TRAVERSE CITY | C | 0 | 2 | = |
| MI | SECTOR DETROIT | C | 0 | 1 | = |
| MO | FT LEONARD WOOD | J | 14 | 475 | + |
| MO | WHITEMAN AFB | J | 2 | 131 | - |
| MS | COLUMBUS AFB | J | 0 | 14 | = |
| MS | KEESLER AFB | J | 7 | 354 | + |
| MT | MALMSTROM AFB | J | 0 | 159 | = |
| NC | CAMP LEJEUNE | J | 9 | 1103 | - |
| NC | CHERRY POINT | J | 1 | 91 | = |
| NC | FT LIBERTY | J | 33 | 1801 | - |
| NC | SEYMOUR JOHNSON AFB | J | 0 | 92 | = |
| NC | SUPPORT CENTER ELIZABETH CITY | C | 0 | 6 | = |
| NC | USMC BASE CAMP LEJEUNE | N | 0 | 10 | = |
| ND | GRAND FORKS AFB | J | 2 | 113 | + |
| ND | MINOT AFB | J | 0 | 124 | = |
| NE | OFFUTT AFB | J | 0 | 13 | = |
| NJ | AIR STATION ATLANTIC CITY | C | 0 | 3 | = |
| NJ | MCGUIRE JBMDL | J | 2 | 150 | - |
| NJ | TRAINING CENTER CAPE MAY | C | 5 | 72 | + |
| NM | CANNON AFB | J | 3 | 28 | = |
| NM | HOLLOMAN AFB | J | 1 | 69 | - |
| NM | KIRTLAND AFB | J | 1 | 121 | = |
| NV | FALLON | J | 0 | 11 | = |
| NV | NELLIS AFB | J | 5 | 395 | - |
| NY | FT DRUM | J | 0 | 94 | = |
| NY | SECTOR NEW YORK | C | 0 | 4 | = |
| NY | WEST POINT | J | 0 | 35 | = |

"2 wks" in the table is defined as labs collected 7-21 days prior to the current week of the report. This delay is due to delays in receiving data from MHS GENESIS.

USNORTHCOM Laboratory-Confirmed Influenza

(2023-2024 Season: Week 13)

Laboratory-Confirmed Influenza (All Beneficiaries) by Installation Ohio through Wyoming

*Reporting of laboratory data from MHS GENESIS is typically delayed by 2 weeks

| State | Location | Service | A (not subtyped) | | A (H1N1) | | A (H3N2) | | A & B | | B | | Total positive | Total tested | % Positive | Change from last report |
|-------|-------------------------------------|---------|------------------|--------|----------|--------|----------|--------|-------|--------|-------|--------|----------------|--------------|------------|-------------------------|
| | | | 2 wks | Season | 2 wks | Season | 2 wks | Season | 2 wks | Season | 2 wks | Season | 2 wks | 2 wks | 2 wks | |
| OH | WRIGHT-PATTERSON AFB | J | 11 | 206 | 1 | 17 | 1 | 9 | 0 | 0 | 17 | 89 | 30 | 223 | 13 | - |
| OK | ALTUS AFB | J | 0 | 25 | 0 | 3 | 0 | 1 | 0 | 0 | 0 | 50 | 0 | 45 | 0 | = |
| OK | FT SILL | J | 11 | 175 | 0 | 0 | 0 | 0 | 3 | 9 | 230 | 20 | 137 | 15 | - | |
| OK | TINKER AFB | J | 1 | 25 | 0 | 4 | 0 | 4 | 0 | 0 | 0 | 21 | 1 | 23 | 4 | - |
| OK | VANCE AFB | J | 2 | 21 | 0 | 0 | 0 | 2 | 0 | 0 | 0 | 19 | 2 | 19 | 11 | + |
| PA | CARLISLE BARRACKS | J | 2 | 6 | 0 | 0 | 0 | 0 | 0 | 3 | 8 | 5 | 8 | 63 | - | |
| PR | AIR STATION BORINQUEN | C | 0 | 2 | 0 | 0 | 0 | 0 | 0 | 0 | 1 | 0 | 0 | 0 | = | |
| PR | FT BUCHANAN | J | 1 | 16 | 0 | 0 | 0 | 0 | 0 | 0 | 0 | 11 | 1 | 21 | 5 | + |
| PR | SECTOR SAN JUAN | C | 0 | 1 | 0 | 0 | 0 | 0 | 0 | 0 | 0 | 0 | 0 | 0 | = | |
| RI | NEW ENGLAND | J | 3 | 18 | 0 | 0 | 0 | 0 | 0 | 3 | 8 | 6 | 21 | 29 | - | |
| SC | BEAUFORT | J | 3 | 34 | 0 | 1 | 0 | 0 | 0 | 1 | 17 | 4 | 59 | 7 | - | |
| SC | CHARLESTON JB | J | 2 | 29 | 0 | 0 | 1 | 1 | 0 | 0 | 1 | 8 | 4 | 37 | 11 | - |
| SC | FT JACKSON | J | 3 | 249 | 0 | 0 | 0 | 0 | 5 | 2 | 80 | 5 | 154 | 3 | - | |
| SC | JOINT (NF) CHARLESTON (NAV WPNSTA) | J | 0 | 68 | 0 | 2 | 0 | 0 | 0 | 1 | 22 | 1 | 37 | 3 | + | |
| SC | MCRD PARRIS ISLAND | J | 11 | 110 | 0 | 0 | 1 | 2 | 0 | 2 | 3 | 53 | 15 | 71 | 21 | + |
| SC | SHAW AFB | J | 2 | 54 | 0 | 0 | 0 | 1 | 0 | 0 | 1 | 23 | 3 | 30 | 10 | + |
| SD | ELLSWORTH AFB | J | 1 | 19 | 0 | 0 | 0 | 0 | 0 | 0 | 0 | 18 | 1 | 25 | 4 | + |
| TN | FT CAMPBELL | J | 3 | 54 | 0 | 0 | 0 | 0 | 7 | 4 | 156 | 7 | 53 | 13 | - | |
| TN | MILLINGTON | J | 0 | 23 | 0 | 0 | 0 | 0 | 0 | 2 | 29 | 2 | 18 | 11 | + | |
| TX | 59th MDW-BULVERDE CLINIC | J | 0 | 4 | 0 | 0 | 0 | 1 | 0 | 0 | 5 | 0 | 0 | 0 | = | |
| TX | CORPUS CHRISTI | J | 1 | 19 | 0 | 0 | 0 | 0 | 1 | 4 | 16 | 5 | 29 | 17 | - | |
| TX | DYESS AFB | J | 4 | 33 | 0 | 0 | 0 | 0 | 1 | 1 | 35 | 5 | 42 | 12 | - | |
| TX | FORT WORTH | J | 0 | 0 | 0 | 0 | 0 | 0 | 0 | 0 | 0 | 0 | 1 | 0 | = | |
| TX | FT BLISS | J | 37 | 1206 | 0 | 249 | 3 | 129 | 0 | 5 | 32 | 352 | 72 | 555 | 13 | - |
| TX | FT CAVAZOS | J | 13 | 1130 | 0 | 27 | 1 | 6 | 1 | 7 | 16 | 289 | 31 | 351 | 9 | - |
| TX | GOODFELLOW AFB | J | 3 | 27 | 0 | 0 | 0 | 0 | 0 | 0 | 0 | 15 | 3 | 42 | 7 | + |
| TX | JOINT (AF) SAN ANTONIO FSH-LAF-RAF | J | 29 | 1569 | 1 | 164 | 2 | 64 | 0 | 8 | 10 | 674 | 42 | 617 | 7 | - |
| TX | KINGSVILLE | J | 0 | 1 | 0 | 0 | 0 | 0 | 0 | 0 | 0 | 1 | 0 | 7 | 0 | = |
| TX | LAUGHLIN AFB | J | 0 | 8 | 0 | 0 | 0 | 0 | 0 | 0 | 0 | 5 | 0 | 6 | 0 | = |
| TX | MCGREGOR RANGE | A | 0 | 116 | 0 | 0 | 0 | 0 | 0 | 0 | 4 | 0 | 1 | 0 | = | |
| TX | SHEPPARD AFB | J | 1 | 12 | 0 | 11 | 2 | 5 | 0 | 0 | 0 | 12 | 3 | 42 | 7 | + |
| UT | HILL AFB | J | 1 | 27 | 1 | 2 | 0 | 0 | 0 | 0 | 0 | 17 | 2 | 10 | 20 | - |
| VA | CHESAPEAKE | J | 0 | 0 | 0 | 0 | 0 | 0 | 0 | 0 | 0 | 0 | 0 | 3 | 0 | = |
| VA | DAHLGREN | J | 0 | 0 | 0 | 0 | 0 | 0 | 0 | 0 | 1 | 0 | 0 | 0 | = | |
| VA | DUMFRIES | J | 4 | 147 | 0 | 0 | 0 | 0 | 10 | 5 | 104 | 9 | 30 | 30 | - | |
| VA | FAIRFAX | J | 4 | 102 | 0 | 0 | 0 | 0 | 6 | 5 | 64 | 9 | 42 | 21 | - | |
| VA | FT BELVOIR | J | 18 | 613 | 0 | 3 | 0 | 0 | 0 | 24 | 134 | 42 | 388 | 11 | - | |
| VA | FT GREGG-ADAMS | J | 6 | 117 | 0 | 0 | 0 | 0 | 0 | 15 | 55 | 21 | 80 | 26 | - | |
| VA | ISC PORTSMOUTH | C | 0 | 0 | 0 | 0 | 0 | 0 | 0 | 0 | 0 | 0 | 2 | 0 | = | |
| VA | JOINT (AN) BASE MYER-HENDERSON HALL | J | 4 | 22 | 0 | 0 | 0 | 0 | 0 | 1 | 6 | 5 | 22 | 23 | - | |
| VA | JOINT (AN) EB LITTLE CREEK-FT STORY | J | 0 | 4 | 0 | 8 | 0 | 5 | 0 | 0 | 6 | 0 | 3 | 0 | = | |
| VA | JOINT BASE LANGLEY-EUSTIS | J | 1 | 87 | 0 | 0 | 0 | 0 | 1 | 4 | 55 | 5 | 53 | 9 | - | |
| VA | LANGLEY JBLE | J | 16 | 272 | 0 | 6 | 0 | 4 | 0 | 2 | 9 | 96 | 25 | 230 | 11 | - |
| VA | NORFOLK | J | 1 | 14 | 0 | 4 | 1 | 4 | 0 | 0 | 0 | 13 | 2 | 16 | 13 | + |
| VA | PORTSMOUTH | J | 3 | 113 | 1 | 63 | 3 | 47 | 0 | 5 | 8 | 65 | 15 | 163 | 9 | - |
| VA | QUANTICO | J | 1 | 91 | 0 | 0 | 0 | 0 | 1 | 2 | 17 | 3 | 25 | 12 | - | |
| VA | SUFFOLK | J | 0 | 2 | 0 | 0 | 0 | 0 | 0 | 0 | 1 | 0 | 0 | 0 | = | |
| VA | TRAINING CENTER YORKTOWN | C | 0 | 1 | 0 | 0 | 0 | 0 | 2 | 0 | 0 | 0 | 0 | 0 | = | |
| VA | VIRGINIA BEACH | J | 0 | 0 | 0 | 6 | 0 | 2 | 0 | 0 | 2 | 3 | 2 | 5 | 40 | + |
| VA | YORKTOWN | J | 0 | 0 | 0 | 2 | 0 | 0 | 0 | 0 | 0 | 0 | 0 | 0 | = | |
| WA | BANGOR | J | 0 | 4 | 0 | 0 | 0 | 0 | 1 | 1 | 12 | 1 | 10 | 10 | + | |
| WA | EVERETT | J | 0 | 4 | 0 | 0 | 0 | 0 | 0 | 0 | 0 | 0 | 5 | 0 | = | |
| WA | FAIRCHILD AFB | J | 0 | 18 | 1 | 1 | 0 | 1 | 0 | 0 | 0 | 5 | 1 | 33 | 3 | + |
| WA | ISC SEATTLE | C | 0 | 1 | 0 | 0 | 0 | 0 | 0 | 0 | 0 | 0 | 1 | 0 | = | |
| WA | JACKSON PARK | J | 6 | 44 | 0 | 0 | 0 | 0 | 3 | 1 | 6 | 7 | 55 | 13 | + | |
| WA | JOINT (AF) BASE LEWIS-MCCHORD | J | 12 | 110 | 1 | 96 | 0 | 17 | 0 | 2 | 34 | 15 | 278 | 5 | - | |
| WA | MCCHORD JBLM | J | 0 | 1 | 0 | 0 | 0 | 0 | 0 | 0 | 0 | 0 | 3 | 0 | = | |
| WA | WHIDBEY ISLAND | J | 0 | 6 | 1 | 11 | 0 | 1 | 0 | 3 | 9 | 4 | 43 | 9 | - | |
| WY | FE WARREN AFB | J | 0 | 38 | 0 | 0 | 0 | 0 | 2 | 2 | 1 | 69 | 3 | 26 | 12 | - |

"2 wks" in the table is defined as labs collected 7-21 days prior to the current week of the report. This delay is due to delays in receiving data from MHS GENESIS.

USNORTHCOM COVID-19 Cases

(2024-2024 Season: Week 13)

COVID-19 Cases Since Week 40 (All Beneficiaries) by Installation Ohio through Wyoming

*Reporting of laboratory data from MHS GENESIS is typically delayed by 2 weeks

| State | Location | Service | COVID 19 | | Change from last report |
|-------|------------------------------------|---------|----------|---------------|-------------------------|
| | | | 2 wks | Since week 41 | |
| OH | WRIGHT-PATTERSON AFB | J | 21 | 415 | + |
| OK | ALTUS AFB | J | 3 | 98 | + |
| OK | FT SILL | J | 20 | 451 | + |
| OK | TINKER AFB | J | 3 | 98 | + |
| OK | VANCE AFB | J | 0 | 29 | = |
| OR | GROUP NORTH BEND | C | 0 | 1 | = |
| PR | FT BUCHANAN | J | 1 | 54 | = |
| RI | NEW ENGLAND | J | 5 | 176 | - |
| SC | BEAUFORT | J | 11 | 279 | + |
| SC | CHARLESTON JB | J | 1 | 119 | - |
| SC | FT JACKSON | J | 32 | 623 | - |
| SC | JOINT (NF) CHARLESTON (NAV WPNSTA) | J | 2 | 149 | = |
| SC | SHAW AFB | J | 5 | 110 | - |
| SD | ELLSWORTH AFB | J | 0 | 151 | = |
| TX | CORPUS CHRISTI | J | 2 | 70 | - |
| TX | DYESS AFB | J | 2 | 117 | = |
| TX | FT BLISS | J | 42 | 1027 | + |
| TX | FT CAVAZOS | J | 24 | 1547 | - |
| TX | GOODFELLOW AFB | J | 0 | 68 | = |
| TX | GROUP HOUSTON/GALVESTON | C | 0 | 1 | = |
| TX | JOINT (AF) SAN ANTONIO FSH-LAF-RAF | J | 42 | 2753 | - |
| TX | LAUGHLIN AFB | J | 0 | 13 | = |
| TX | SHEPPARD AFB | J | 1 | 82 | - |
| UT | HILL AFB | J | 0 | 61 | = |
| VA | FT BELVOIR | J | 19 | 925 | - |
| VA | FT GREGG-ADAMS | J | 6 | 195 | - |
| VA | ISC PORTSMOUTH | C | 0 | 1 | = |
| VA | JOINT BASE LANGLEY-EUSTIS | J | 1 | 107 | - |
| VA | LANGLEY JBLE | J | 7 | 637 | + |
| VA | PORTSMOUTH | J | 8 | 299 | + |
| VA | QUANTICO | J | 1 | 109 | - |
| VA | TRAINING CENTER YORKTOWN | C | 0 | 8 | = |
| WA | AIR STATION PORT ANGELES | C | 0 | 3 | = |
| WA | FAIRCHILD AFB | J | 2 | 108 | - |
| WA | ISC SEATTLE | C | 1 | 10 | = |
| WA | JACKSON PARK | J | 6 | 252 | + |
| WA | JOINT (AF) BASE LEWIS-MCCHORD | J | 34 | 1464 | - |
| WA | WHIDBEY ISLAND | J | 4 | 166 | - |
| WY | FE WARREN AFB | J | 2 | 133 | - |

“2 wks” in the table is defined as labs collected 7-21 days prior to the current week of the report. This delay is due to delays in receiving data from MHS GENESIS.

Surveillance Programs and Data Sources

Defense Health Agency / Armed Forces Health Surveillance Division (AFHSD):

The Armed Forces Health Surveillance Division (AFHSD) is the central epidemiologic resource for the U.S. Armed Forces, conducting medical surveillance to protect those who serve our nation in uniform and allies who are critical to our national security interests. The Epidemiology and Analysis Section of AFHSD, the Epi Data Center of the Defense Centers for Public Health—Portsmouth (DCPH-P), and the Defense Centers of Public Health—Dayton (DCPH-D) have compiled data for this report from the following sources below.

Influenza-like Illness Activity:

Medical encounter and demographic data from the AFHSD's Defense Medical Surveillance System (DMSS) are used to generate portions of this report. ICD-10 codes from outpatient encounters are used to identify influenza-like illness (ILI). ILI is defined using the following codes: B97.89, H66.9, H66.90, H66.91, H66.92, H66.93, J00, J01.9, J01.90, J06.9, J09, J09.X, J09.X1, J09.X2, J09.X3, J09.X9, J10, J10.0, J10.00, J10.01, J10.08, J10.1, J10.2, J10.8, J10.81, J10.82, J10.83, J10.89, J11, J11.0, J11.00, J11.08, J11.1, J11.2, J11.8, J11.81, J11.82, J11.83, J11.89, J12.89, J12.9, J18, J18.1, J18.8, J18.9, J20.9, J40, R05, R50.9.

The percentage of all outpatient visits that have an ILI code is calculated each week for all service members, regardless of component. These data are presented weekly for the current season and compared to the four prior seasons among service members. Due to delays in receiving the MHS GENESIS encounter data, the most recent data that can be presented is the 7-21 days prior to the reporting week. Influenza activity levels are calculated by comparing the mean reported percent of visits due to ILI for the previous 7-21 days to the mean reported percent of visits due to ILI during baseline weeks (defined as non-influenza weeks (weeks 22-39) over the past 3 years). Since the 2020-2021 and 2021-2022 influenza seasons were significantly reduced due to COVID-19 mitigation efforts, these seasons were excluded from the baseline calculations. The baseline weeks for the 2023-2024 report are from the years 2019, 2020, and 2023. There are four influenza activity levels, minimal, low, moderate, and high. The activity level corresponds to the number of standard deviations (SD) below, at or above the mean for the previous 7-21 day period compared to the mean of the baseline weeks. Minimal activity corresponds to an influenza percentage that is less than 2 SD above the mean. Low activity corresponds to an influenza percentage that is equal to or greater than 2 SD above the mean, but less than 4 SD above the mean. Moderate activity corresponds to an influenza percentage that is equal to or greater than 4 SD above the mean, but less than 6 SD above the mean. High activity corresponds to an influenza percentage that is equal to or greater than 6 SD above the mean.

Influenza activity levels are presented in the Geographic Combatant Command (GCC) maps, either by Installation, state, or country.

Influenza Positive Specimens:

Influenza lab results (HL-7 formatted data) are compiled and transmitted from the DCPH-P to AFHSD. Results obtained via PCR, viral culture, and rapid influenza assays are reported. Although the inclusion of rapid tests may underestimate the weekly and cumulative percent positive estimates due to false negatives, visibility of the positive rapid results provides valuable information for this surveillance report. Influenza types/subtypes are categorized as influenza A/not subtyped, influenza A(H1N1), influenza A(H3N2), influenza A and B co-infection, and influenza B. Additionally, laboratory-confirmed positive results are used to identify influenza-related hospitalization cases across the DoD.

The percent positivity is calculated by dividing the number of influenza positive specimens by the total number of specimens (positive and negative only; inconclusive results are excluded). The distributions of percent positive specimens by subtype are presented on a weekly basis for the entire influenza season. Due to delays in receiving the MHS GENESIS laboratory data, the most recent data that can be presented is the 7-21 days prior to reporting week. The distribution of subtypes for the previous 7-21 days are presented as pie graphs for states and countries. For installations, data are presented in tables with counts and percent positive by subtype for the previous 7-21 days and for the entire season. The "change from past 7-21 days" column reports the absolute difference in the percent positive from the prior week's report to the current week's report.

Surveillance Programs and Data Sources

COVID-19 Cases:

COVID-19 case data are compiled from the COVID-19 positive lab results (HL-7 formatted data) and cases reported in the DRSi. Due to delays in receiving the MHS GENESIS lab data, the most recent data that can be presented is the 7-21 days prior to reporting week. The percent positivity calculation is restricted to only COVID-19 cases reported through the lab data so that an accurate denominator can be obtained. The percent positivity is calculated by dividing the number of COVID-19 positive specimens by the total number of specimens tested for COVID-19. For installations, COVID-19 case data are presented in tables with case counts for the previous 7-21 days and for the entire influenza season (Week 40 to current). The “change from past 7-21 days” column reports the absolute difference in the number of COVID-19 case counts from the prior week’s report to the current week’s report.

Pharmacy Transactions for Dispensed Influenza Antiviral Prescriptions:

HL7-formatted pharmacy transactions are used to assess the number of dispensed influenza antiviral (AV) prescriptions. Four influenza AV medications approved by the Food and Drug Administration (FDA) are recommended by the CDC for use in the United States (US) for the 2023-2024 influenza season: oral oseltamivir (Tamiflu® or generic), inhaled zanamivir (Relenza®), and intravenous peramivir (Rapivab®), and baloxavir marboxil (Xofluz®). These prescriptions are included in this surveillance. The overall count of dispensed AV prescriptions by week is presented graphically for the influenza season. A seasonal baseline is displayed with dispensed AV prescriptions. Surveillance thresholds are displayed with the count of inpatient dispensed AV prescriptions. Additionally, counts of inpatient dispensed influenza AV prescriptions are presented weekly for the influenza season.

Influenza Baselines, Thresholds, and Trends:

Weekly baselines used a three-year average to compare results with those from the same week during the previous three seasons. Since the 2020-2021 and 2021-2022 influenza seasons were significantly reduced due to COVID-19 mitigation efforts, these seasons were excluded from the baseline calculations. The baseline calculations used the 2018-2019, 2019-2020, and 2022-2023 season data. Bands for one and two standard deviations above seasonal baseline estimates are displayed to indicate when trends diverge with respect to timing or volume from those of recent seasons. The ILI, lab, and dispensed AV prescription data thresholds are calculated by adding two standard deviations to the off-season average.

Inpatient thresholds (lab and dispensed AV prescription data) are calculated by adding one standard deviation to the overall weighted average for in-season weeks. Weeks that represent at least 2% of the total season’s laboratory-positive influenza cases for at least two consecutive weeks was considered to be “in-season” or influenza weeks; all other weeks are considered to be “off-season” or non-influenza weeks.

Links to Service-Specific Influenza Reports:

Select the following links to see service-specific influenza surveillance weekly reports:

- Defense Centers for Public Health—Portsmouth (DCPH-P):
<https://www.med.navy.mil/Navy-Marine-Corps-Public-Health-Center/Population-Health/Epi-Data-Center/Diseases-Conditions-and-Infections/Influenza/>
- Defense Centers for Public Health—Dayton (DCPH-D):
To access the Air Force weekly influenza reports, an AFNet account is required. Anyone with a CAC can request access to AFNet at: <https://epi.afds.af.mil/nonaf>